



Patwino Worrntla Kodoi Dihi Open Space Park

Project Goal: Develop a new natural park with diverse outdoor recreation and learning opportunities, balanced with natural resource protection, continued agriculture, and with managed safety and fire risk.

Summary:

Patwino Worrntla Kodoi Dihi Open Space Park will be Solano County’s premier open space park, serving the local community and drawing regional visitors who could patronize Solano restaurants, wineries, shops, and other tourism-related businesses.

This beautiful natural area features oak woodlands, seasonal creeks, diverse wildlife, and spectacular views. The park will support school field trips through educational signage, bus parking, potable water, and bathrooms. Visitors to the property will enjoy shaded picnic areas, a native plant garden, more than 11 miles of trails, and a .61 mile All People’s Trail which will allow people of all abilities to enjoy the health and wellness benefits of access to nature.



The All People’s Trail provides access and enjoyment to people of all abilities

Project Elements:

- **Entrance, Staging Area, and Welcome Plaza:** The park will feature a “Welcome Plaza” including an improved entrance and new signage at Rockville Road, and parking for 60 passenger vehicles (including 3 ADA stalls) and 5 buses or horse trailers.
- **Trails and Park Amenities:** Visitors will enjoy 11.5 miles of trails including multi-use trails and a .61 mile All People’s Trail. Amenities include benches, shade structures, an ADA picnic area, interpretive signage, bathrooms, water fountains, pay stations, bike racks, horse hitching posts and more.
- **Land Management, Fire Reduction, Emergency Response:** Expanded livestock water infrastructure supports grazing to reduce fuel load, facilitates ecosystem management, and supports climate resilience. An emergency plan will facilitate emergency and fire access and response.

Project Budget and Funding

Funder	Amount	Project Element
Solano Land Trust (endowment and donations)	\$1,000,000	Grazing Infrastructure (Water), Trails, etc.
State of California Coastal Conservancy	\$200,000	Staging Area Design, Amenities, etc.
Solano Orderly Growth Committee	\$585,000	Trails, Planning, etc.
Doyuti T’uhkama (Yocha Dehe Wintun Nation)	\$1,255,000	Entrance, Staging Area, Signage, etc.
City of FF CFD 2/Solano County GVOSMD	\$255,000	Trails
Natural Resources Conservation Service	\$85,000	Grazing Infrastructure (Water)
Funding Needed from Private Sources	\$500,000	Staging Area, Amenities, Signage, Graz. Infrastructure, etc.
Funding Needed from Public Sources	\$1,720,000	Staging Area, Amenities, Signage, Potable Water, etc.
Total	\$5,600,000	

Proposed Operations Plan:

- Solano County Parks Dept. to operate with 1 full time ranger, 1 part time ranger asst.; may contract with Sherriff Dept. for additional security. County to support all aspects of public access management.
- Operating hours: sunrise to sunset, Friday-Monday
- \$3 Per Person Fee (consistent with City of Fairfield fee at adjacent Rockville Hills Park)
- Solano Land Trust (SLT) to lead resource protection, restoration, grazing, and fuel reduction
- City of Fairfield, Solano County and SLT will collaborate to leverage efficiencies between the two parks

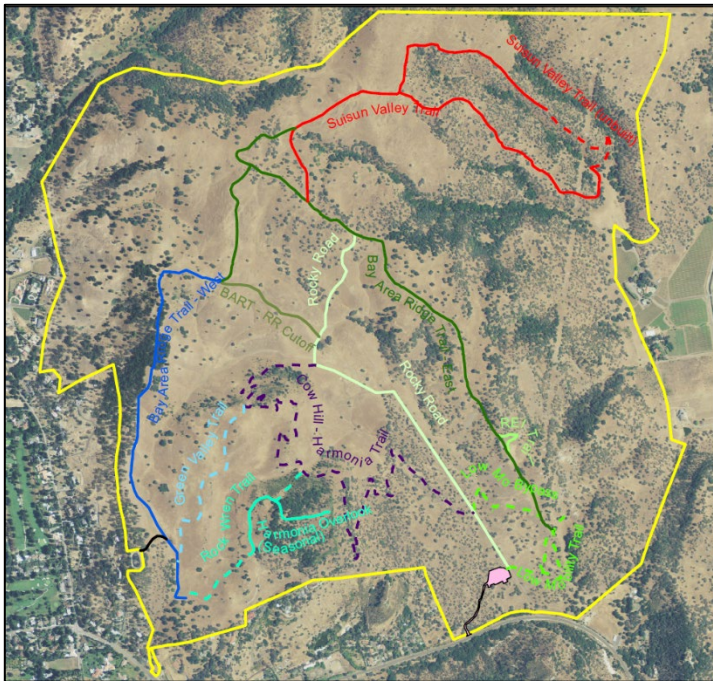
Operations and Management Budget Estimates*				
	Expenses	Revenue		
		Fees	****SLT	CFD 2/GVOSMD
Year 1/Start Up**	\$650,152	\$30,000	\$156,000	\$464,152
Year 2***	\$522,400	\$30,900	\$160,680	\$330,820
Year 3***	\$538,072	\$31,827	\$165,500	\$340,745

*Still under review by County staff

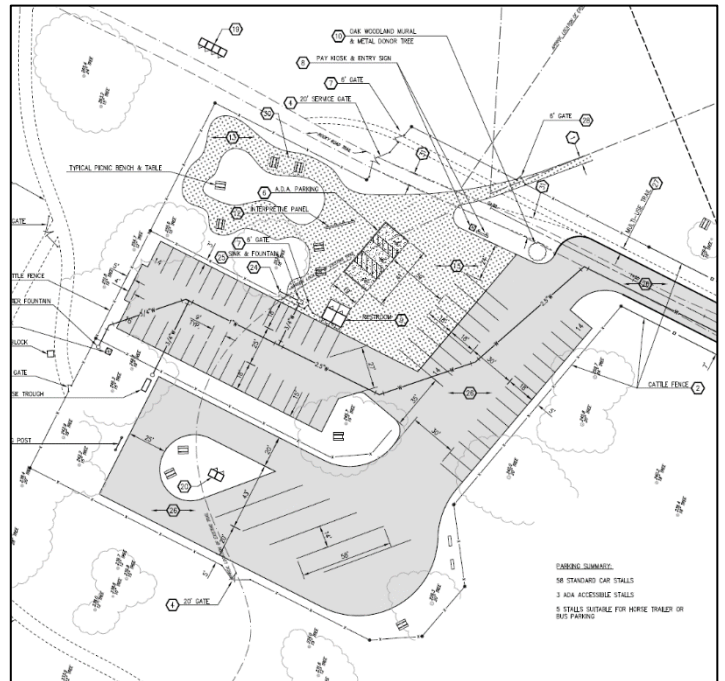
**Includes capital/startup costs

***Years 2 and 3 assume increase in costs and revenue of 3% per year

****SLT Revenue will cover resource management, fuel reduction, cattle grazing infrastructure, etc.



Visitors will enjoy 11.5 miles of trails for various abilities, fitness levels, and interests.



Parking lot accommodates buses, horse trailers and passenger cars, plus ADA bathrooms and picnic area.

For more information, contact Nicole Braddock, Executive Director, Solano Land Trust
nicole@solanolandtrust.org or 707-330-1275