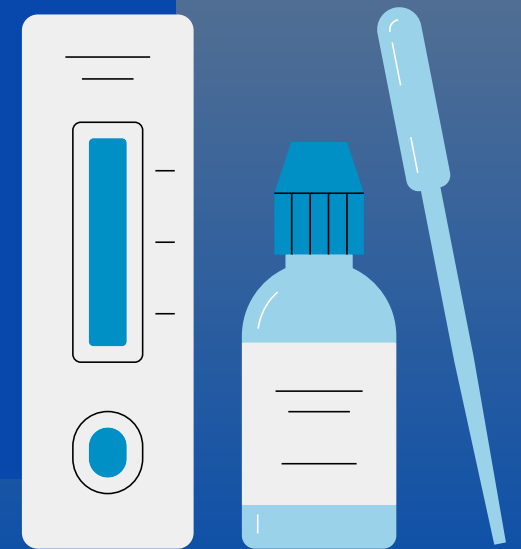


What to do if you  
test **positive** for  
COVID-19 or are  
**exposed** to  
someone with  
COVID-19



## FOR EMPLOYED POPULATION

# If you test **POSITIVE** for COVID-19 (regardless of vaccination status)

Option 1:

Day 1-5

Day 5

Day 6-10

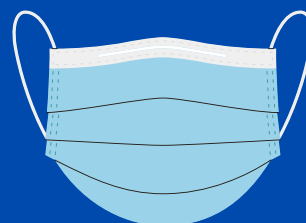
Day 11+



Stay home

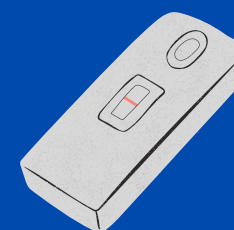


Get tested on  
Day 5



If test is **negative** AND  
**no fever** or **symptoms**  
are **better**, you can  
leave home, but keep  
masking.

If test is **positive**  
continue to isolate.



**NO** testing  
required **after**  
**day 10**,  
regardless of  
previous testing  
results.

Option 2:

Day 1-10

Isolate for 10 days if unable to test or  
if you test positive on day 5.

Day 11+

*Please note: If you have a fever, continue to stay home until it  
goes away at least 24 hours without anti-fever medicine*



FOR EMPLOYED POPULATION

If you were **EXPOSED** to COVID-19  
& are up-to-date on vaccination

Day 1-5

Day 5

Day 6-10

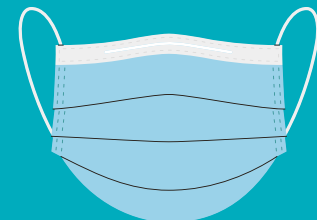


You can  
keep  
working.



Get tested on  
Day 5

*If test is positive, follow  
isolation instructions*



Wear a mask around  
others

*If you develop symptoms, get tested right away & stay home*



[solanocounty.com/covidvaccine](https://solanocounty.com/covidvaccine)  
#VaccinateSolano



FOR EMPLOYED POPULATION

If you were **EXPOSED** to **COVID-19**  
& are not vaccinated or up-to-date

Day 1-5

Day 5

Day 6-10

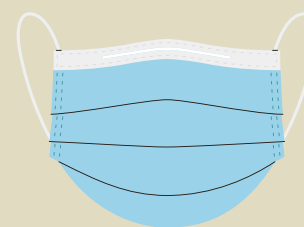


Do not go to  
work



Get tested on Day 5

- **Negative & no symptoms**, can return to work
- If **positive**, follow positive guidance for **Employed Population**
- If **symptomatic**, stay home and **get tested**.



Wear a mask  
around others

*If you develop symptoms, get tested right away & stay home*



[solanocounty.com/covidvaccine](https://solanocounty.com/covidvaccine)  
#VaccinateSolano



FOR GENERAL POPULATION

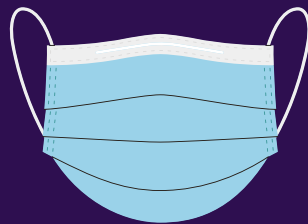
# If you test **POSITIVE** for COVID-19 (regardless of vaccination status)

Day 1-5



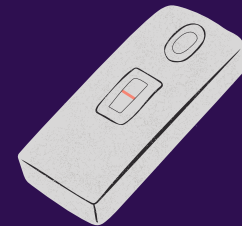
Stay home

Day 6-10



- Can leave home
- Wear a mask around others
- Monitor for symptoms
- Isolate if you become symptomatic

Day 11+



**NO** testing required **after day 10**, regardless of previous testing results.

*Please note: If you have a fever, continue to stay home until it goes away at least 24 hours without anti-fever medicine*



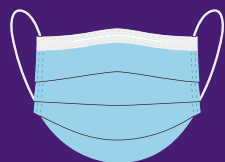
FOR GENERAL POPULATION

If you were **EXPOSED** to COVID-19  
(regardless of vaccination status)

Day 1-10



You do **not** need to stay home



Wear a mask around others  
for 10 days



If you develop symptoms, get tested.  
While waiting for test results, follow  
self-isolation guidance.

*If you develop symptoms, get tested right away & stay home*

