

Cache Slough Complex Habitat Conservation Plan

Cache Slough Landowners & Resource Agencies

June 11, 2021

- HCP Background & Development Status
- Discussion with Landowners and Fish & Wildlife Agencies
 - Round-robin opening remarks
 - Open forum discussion
- Summary of Key Issues
- Outreach – Next Steps

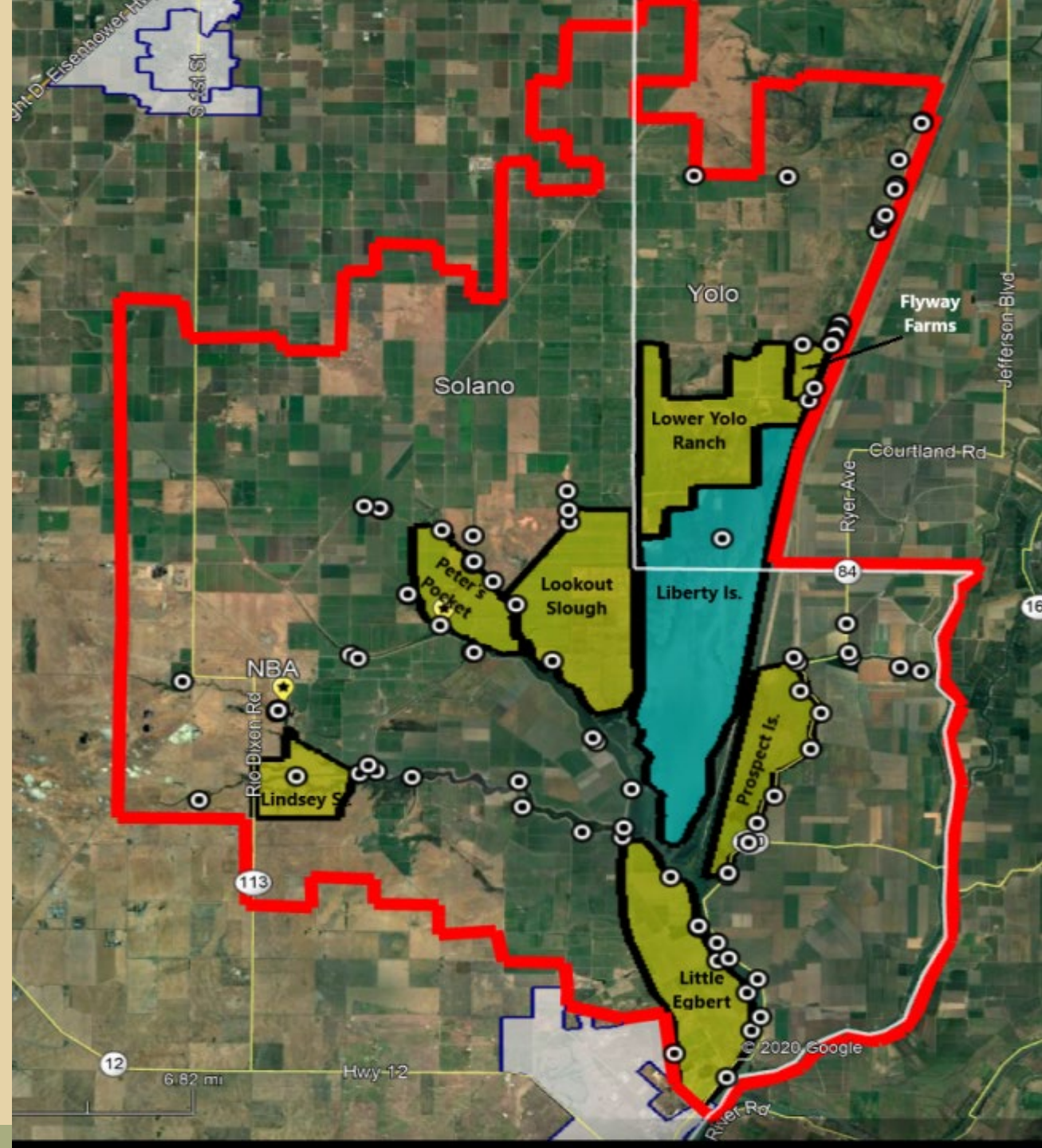
Misty Kaltreider, County of Solano & Kathryn Gaffney, ICF
Caelan McGee, Facilitator, ICF

CacheSloughHCP@solanocounty.com



Meeting Purpose

- Provide a forum for Water Diverters in the Plan Area & Regulatory Agencies to discuss the HCP, with a focus on conservation options



HCP Steering Committee & Partnership

Steering Committee (cte)

- Solano County
- City of Vallejo
- Dept. of Water Resources
- RD 2068
- Solano County Water Agency
- Yolo County Water diverters representative
- Sacramento Area Flood Control Agency

Partnership Assurance Working Group

Steering Cte + the following agency representatives:

- California Natural Resources Agency
- Central Valley Flood Protection Board
- Central Valley Regional Quality Control Board
- National Marine Fisheries Service
- State Water Resources Control Board
- U.S Department of Interior Bureau of Reclamation
- US Army Corp of Engineers
- US Fish and Wildlife Service

Conservation Measures Under Consideration

- Habitat Restoration (tidal habitat or in-channel complexity)
- Habitat Management (removal of abandoned in-water structures, invasive plant management)
- Adjust intake operations (delay start of operations - May vs March)
- Relocation, consolidation, and/or retirement of intakes
- Behavioral modification devices on intakes
- Install fish screens on intakes
- Best management practices (BMPs) to minimize impacts