

Cache Slough Complex Habitat Conservation Plan

Overview and Process

Misty Kaltreider, County of Solano
Kathryn Gaffney, ICF

Caelan McGee, Facilitator, ICF

October 22, 2020



Ways to Participate Today

1. E-mail: Submit a comment or ask a question that will be read aloud. Send e-mail to:
CacheSloughHCP@solanocounty.com
 2. Submit a question or comment using the “Chat” feature in WebEx
 3. Raise hand: Attendees will be given the opportunity to provide verbal comment or ask questions. If interested, please raise your virtual hand
- Please wait for your name to be called before unmuting
 - Please limit your comment or question to 3 minutes

Agenda

- I. Welcome**
- II. Cache Slough Complex HCP Background**
- III. Overview of the Cache Slough Complex HCP Planning Process**
- IV. HCP Proposed Plan Area, Covered Activities, and Covered Species**
- V. Receive Feedback Regarding Expectations for the HCP and Planning Process**
- VI. Summarize Feedback and Review Next Steps**
- VII. Close**

Meeting Objectives

- Provide background on Cache Slough Complex Habitat Conservation Plan (HCP)
- Provide overview of the HCP planning process, including schedule
- Provide an initial overview of the key components of the HCP
- Receive feedback regarding expectations for the HCP planning process
- Review participation opportunities moving forward

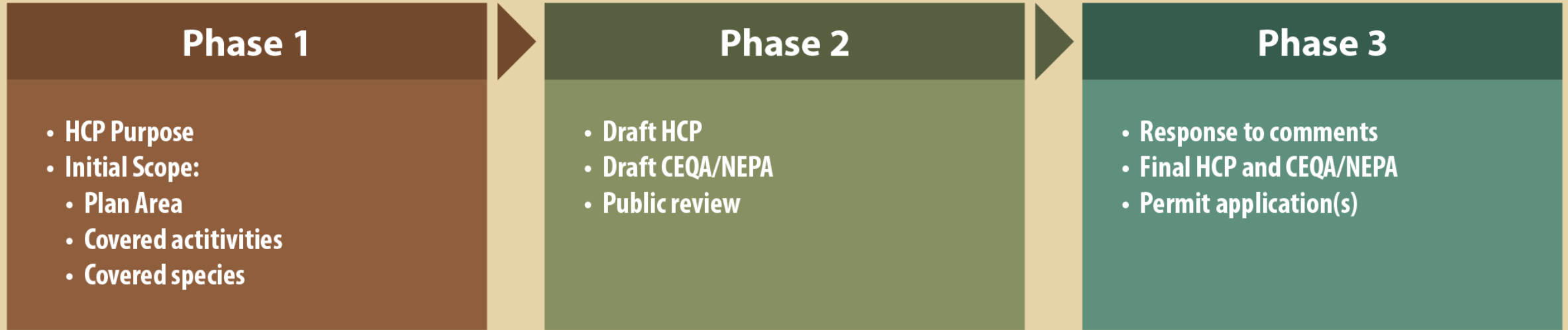
HCP Team Introductions

Steering Committee

- County of Solano
- Department of Water Resources
- Reclamation District No. 2068
- Solano County Water Agency
- Representative for County of Yolo
- Sacramento Area Flood Control Agency
- ICF (HCP consultant)

Cache Slough Complex HCP Background

- Phased Approach for Water Infrastructure Assurances



Overview of the Cache Slough Complex HCP Planning Process

- What is an HCP and an Incidental Take Permit (ITP)?
- What are the Benefits of an HCP/ITP?
- Who is Leading Development of the HCP?
- Program Goals
- HCP Development Schedule

What is an HCP and an Incidental Take Permit?

- An HCP is the planning document required for issuance of an ITP
- The federal Endangered Species Act (ESA) prohibits take of a listed species unless an exception is granted
- Without federal nexus, an HCP is the primary tool used to obtain an exception
- The State of California has a similar law called the California Endangered Species Act (CESA) that prohibits take of State listed species
- Both an HCP and state process result in issuance of an ITP
- Both require impacts to be avoided, minimized, and mitigated

What are the Benefits of this HCP?

The **benefits** of this HCP are that it:

- Establishes a clear and consistent approach to regulatory compliance and provides regulatory assurances
- Allows intake owners and operators to continue existing operations
- Provides a coordinated and collective approach to mitigation

Who is developing the HCP?

County of Solano with support from DWR

DWR is providing funding for HCP planning

HCP Steering Committee

County of Solano
California Department of Water Resources
Solano County Water Agency
Reclamation District No. 2068
Sacramento Area Flood Control Agency
County of Yolo

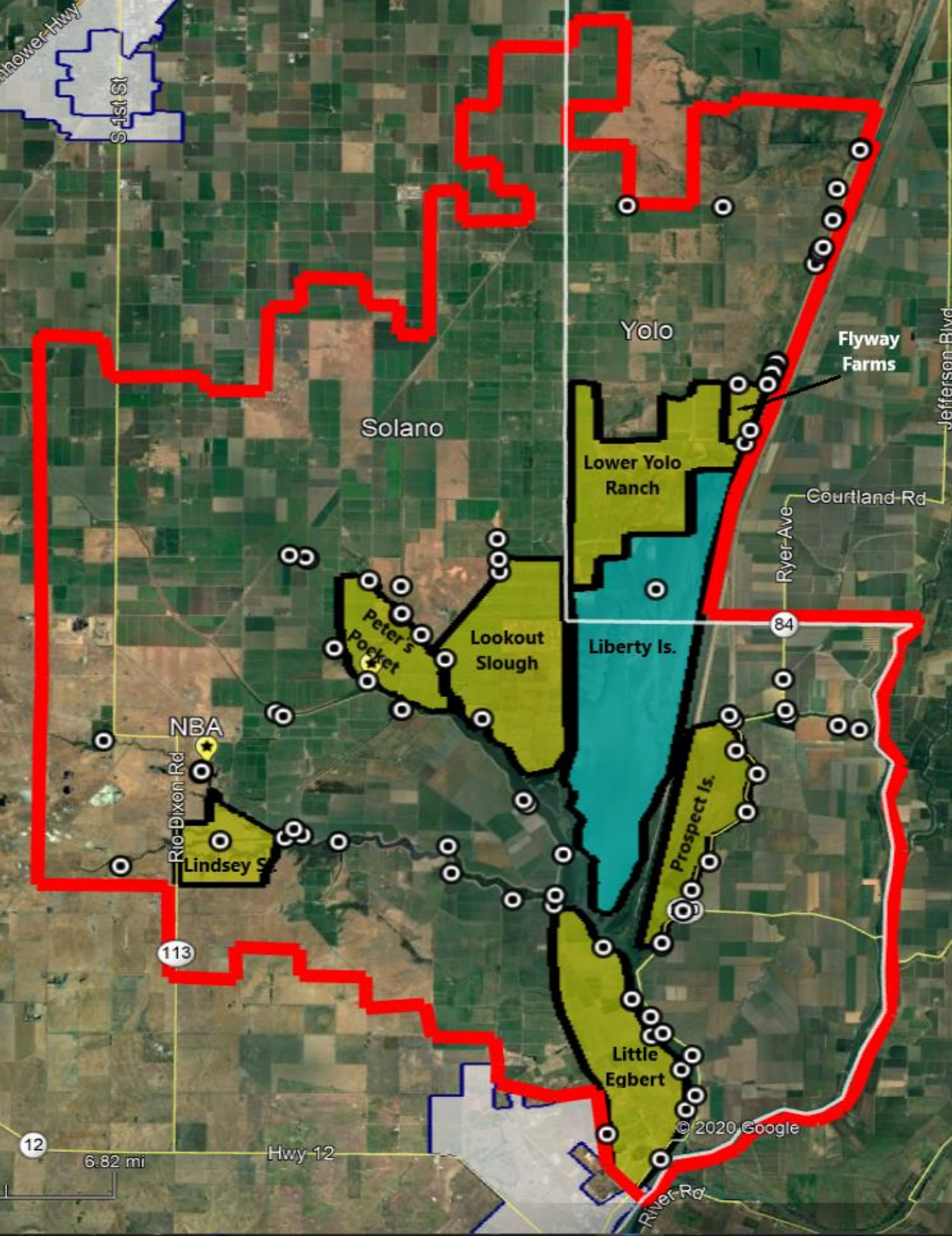
Yolo ByPass/Cache Slough Partnership

California Department of Fish and Wildlife
California Department of Water Resources
California Natural Resources Agency
Central Valley Flood Protection Board
Central Valley Regional Water Quality Control Board
County of Solano
County of Yolo
National Marine Fisheries Service
Reclamation District No. 2068
Sacramento Area Flood Control Agency
Solano County Water Agency
State Water Resources Control Board
U.S. Army Corps of Engineers
U.S. Bureau of Reclamation
U.S. Fish and Wildlife Service

Intake Owners/ Operators

Draft Program Goals

- Provide regulatory assurances to local water diverters to preserve existing local agricultural and municipal water supplies and support economic growth in the region.
- Balance species conservation with water supply needs, while maintaining compliance with the ESA and CESA.
- Incorporate sound scientific research and analysis.
- Provide an open public process in developing and implementing the HCP.



HCP Overview: Plan Area

- Red line = Draft HCP Plan Area
- ~108,000 acres
- 82% in Solano County
- 18% in Yolo County

HCP Overview: Draft Covered Activities

- Operation of existing water intakes in the HCP Plan Area
- Maintenance required to support current intake operation
 - Mechanical or hand removal of aquatic weeds
 - Repair or replacement of damaged or worn intake facility components that do not require dewatering
 - Inspection of water intake facilities by divers
- Mitigation actions (not yet developed)

HCP Overview: Draft Covered Species

Common Name	Status	
	State	Federal
Invertebrates		
Valley elderberry longhorn beetle	-/-	FT
Amphibians and Reptiles		
California tiger salamander	ST/-	FT
Giant garter snake	ST/-	FT
Fish		
Chinook salmon, Sacramento River Winter Run ESU	SE/-	FE
Chinook salmon, Central Valley Spring-run ESU	ST/-	FT
Chinook salmon, Central Valley Fall-/ Late Fall-run ESU	CSC/-	SOC
Steelhead, Central Valley DPS	CSC/-	FT
North American green sturgeon, Southern DPS	CSC/-	FT
White sturgeon	CSC/-	—
Delta smelt	SE/-	FT
Longfin smelt, Bay-Delta DPS	ST/-	W

State

ST = State threatened

SE = State endangered

CSC = California Special Concern Species


Federal

FT = Federal threatened

FE = Federal endangered

SOC = Species of Concern (NMFS)

W = Listing warranted but precluded by higher priority listings



We encourage local water diversion owners and operators within the Cache Slough Complex in Solano and Yolo Counties to engage in the development of the Cache Slough Complex HCP.

http://www.solanocounty.com/depts/rm/delta_programs/cache_slough_complex_habitat_conservation_plan.asp

Ways to Participate Today

1. E-mail: Submit a comment or ask a question that will be read aloud. Send e-mail to:
CacheSloughHCP@solanocounty.com
 2. Submit a question or comment using the “Chat” feature in WebEx
 3. Raise hand: Attendees will be given the opportunity to provide verbal comment or ask questions. If interested, please raise your virtual hand
- Please wait for your name to be called before unmuting
 - Please limit your comment or question to 3 minutes

Ways to Participate Moving Forward

- Visit our website:
 - http://www.solanocounty.com/depts/rm/delta_programs/cache_slough_complex_habitat_conservation_plan.asp
 - Today's slides will be posted on the website
 - Frequently asked questions
- Take the survey by October 29, 2020
- Read our newsletter
- Request a one-on-one meeting by e-mailing CacheSloughHCP@solanocounty.com
- Attend future workshops:
 - March 2021
 - August 2021