



Cache Slough Complex Habitat Conservation Plan

The **Cache Slough Complex** is located in the southeastern portion of Solano County and lies within the Sacramento–San Joaquin Delta. The region is within and downstream of the Yolo Bypass Flood System, and the Sacramento Deepwater Ship Channel runs along the region’s eastern flank. The area has been predominantly in agriculture production since 1850 and has been identified as a prime location for tidal and wetland restoration due to its Delta location, appropriate elevations, and other characteristics important for recovery of aquatic fish species. Outside efforts are underway to restore lands in the Yolo Bypass/Cache Slough Complex.

Once built and functioning, tidal wetland restoration projects have the potential to increase the populations of endangered species near existing local municipal and private agricultural water diversions, thereby increasing the risk of liability for existing operators.

To address this potential liability, the **Cache Slough Complex Habitat Conservation Plan (HCP) Steering Committee** was formed to guide the development of the **HCP and the Incidental Take Permit**. The HCP will address and mitigate potential impacts on listed species associated with operations and maintenance of local water supply infrastructure in the Cache Slough Complex and the Lower Yolo Bypass.

HCP Steering Committee members are the County of Solano, Solano County Water Agency, Sacramento Area Flood Control Agency, Reclamation District No. 2068, and the California Department of Water Resources. Also represented are owners and operators of intakes in the Plan Area.

Cache Slough Complex Habitat Conservation Plan Area

- Plan Area Boundary
- Intake
- Drain
- Dual Intake/Drain

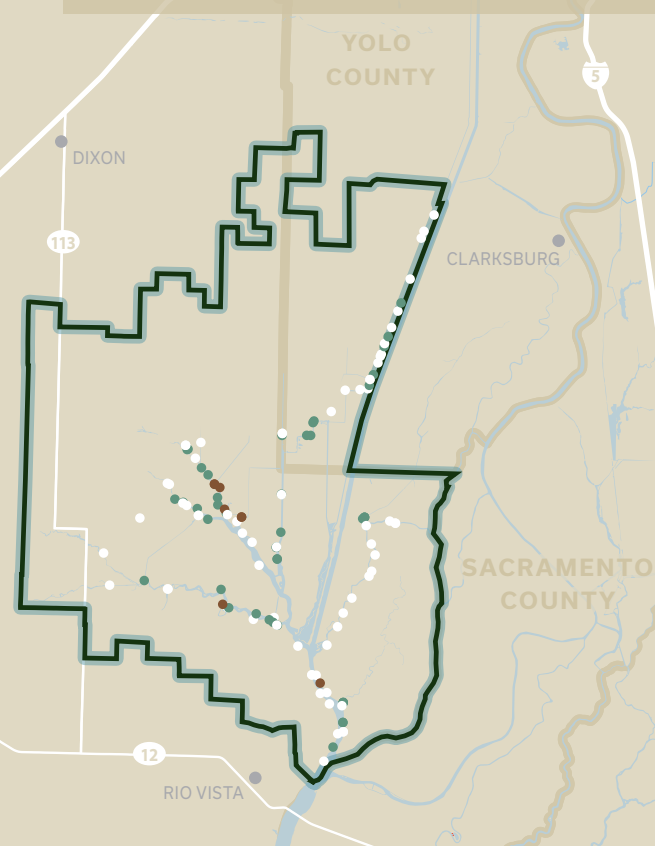


What are HCPs and ITPs?

A Habitat Conservation Plan (HCP) is a planning document required as part of an application for a federal Incidental Take Permit (ITP). An ITP authorizes the lawful “taking” of a threatened or endangered species under covered activities and includes terms and conditions of the HCP.

What key benefits do HCPs offer?

- Allows a permit holder/participant to legally proceed with an activity that would otherwise result in the unlawful take of a listed species and penalties.
- Streamlines project permitting.
- Provides regulatory assurances.
- Benefits the environment by establishing an efficient, effective program to conserve at-risk species and their habitats.



Getting Involved

Solano County, as the lead agency for the Cache Slough Complex HCP, encourages local agricultural water diversion owners and operators within the Cache Slough Complex in Solano and Yolo Counties to learn more and participate in the development of the Cache Slough Complex HCP.

FREQUENTLY ASKED QUESTIONS

I am an agricultural water diversion operator in the Plan Area.

Why should I participate?

Participating and becoming an enrollee in the plan is voluntary. Participants would benefit as the HCP and ITP would provide long-term regulatory assurances and avoid penalties against the taking of a listed species.

What does it cost to participate? How long is the process?

Enrollees may participate in the planning process at no cost. The Cache Slough Complex HCP Steering Committee expects to complete the HCP and receive approval by Winter 2022.

How do I enroll?

All existing water diversion owners with water intakes in the Cache Slough Complex Plan Area are assumed participants at this time. To confirm your participation and contact information, please email us at CacheSloughHCP@solanocounty.com.

What are covered activities?

Covered activities are those activities for which take authorization will be permitted by the U.S. Fish and Wildlife Service, National Marine Fisheries Service, and California Department of Fish and Wildlife. The primary covered activities are operation of water diversions and maintenance required to support operation.



Find answers to more frequently asked questions here:
http://www.solanocounty.com/depts/rm/delta_programs/cache_slough_complex_habitat_conservation_plan.asp

FOR MORE INFORMATION

Misty Kaltreider
Solano County
Water & Natural Resource Manager
MKaltreider@Solanocounty.com
(707) 784 3311

Nedzlene Ferrario
Solano County
Senior Planner
NNFerrario@Solanocounty.com
(707) 784 3170

SCHEDULE & MILESTONES

Virtual Cache Slough Community Meeting

WORKSHOP 1— HCP Process & Overview

THURSDAY, October 22, 2020
5:30 pm–7:00 pm

*Registration is required. Please email CacheSloughHCP@solanocounty.com to register. The deadline to register is **October 20, 2020**.*

*Registrants will be provided a survey in advance of the event. Please return the survey by **October 29, 2020**.*

The County of Solano does not discriminate against persons with disabilities. If you wish to participate and require assistance for this meeting, please call Nedzlene Ferrario at **707-784-3170** at least 24 hours in advance of the event to make reasonable arrangements and ensure accessibility to this meeting.

March 2021

Workshop 2—HCP Planning

August 2021

Workshop 3—Public Draft HCP & CEQA/NEPA

Winter 2022

HCP & ITP Regulatory Approval