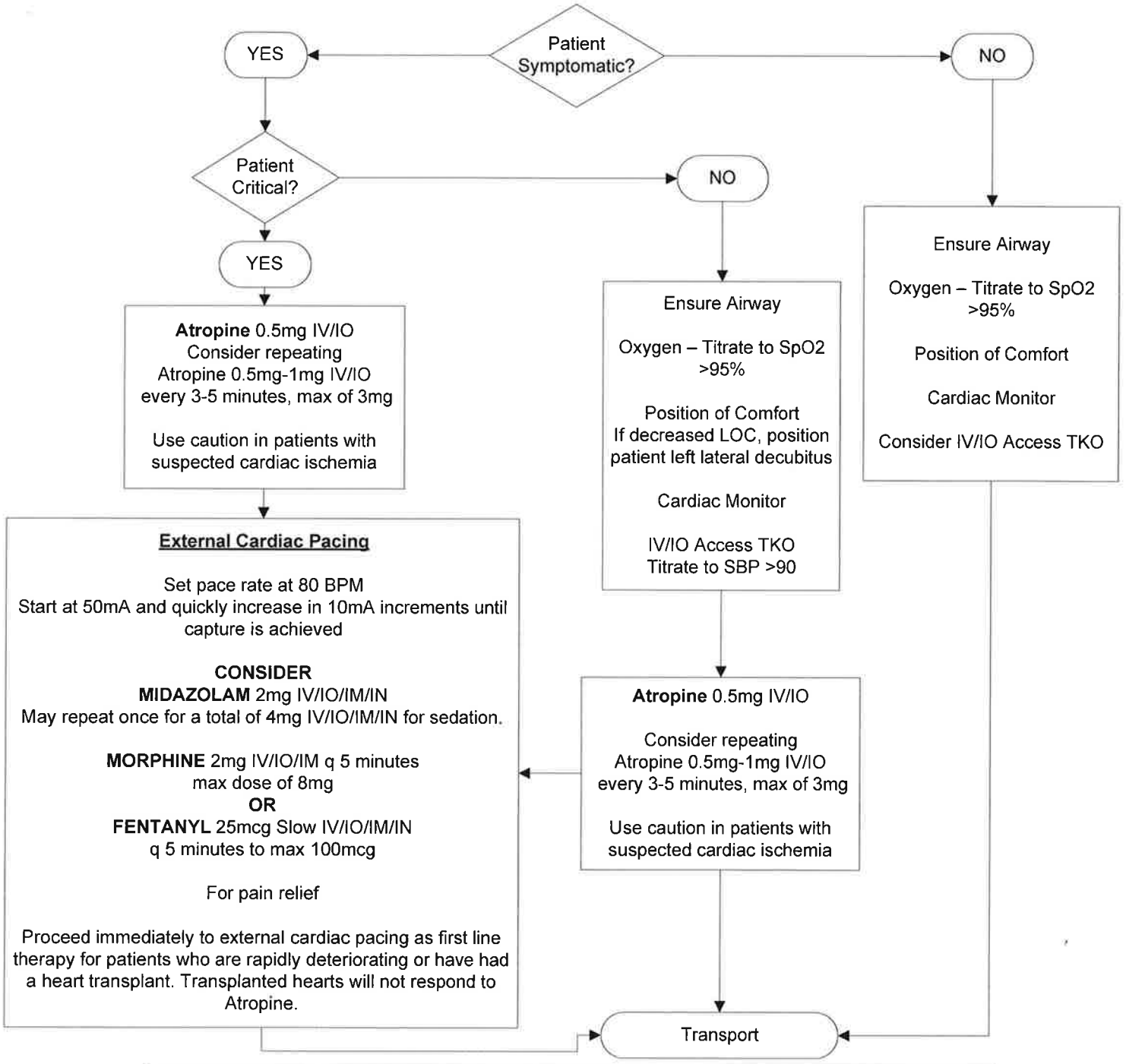


Cardiac Emergencies C-6 Bradycardia

Asymptomatic: HR <60 BPM with no other symptoms
 Symptomatic: HR <60 AND diaphoresis, CP, cap refill >2 sec, cyanosis, ALOC, SOB
 Critical: HR <60 AND SBP <90 AND diaphoresis, CP, cap refill >2 sec, cyanosis, ALOC, SOB



<p>Priorities ABC's Determine degree of physiologic distress Initiate treatment in the field</p>	<p>Reassess rhythm and vital signs frequently Early Transport EARLY CONTACT OF RECEIVING HOSPITAL</p>
--	---

DISRUPTED COMMUNICATIONS
 In the event of a "disrupted communications" situation where a base hospital physician CANNOT be contacted for orders, Solano County Paramedics MAY NOT utilize the portions of this protocol requiring base physician orders AND must transport to the closest receiving facility