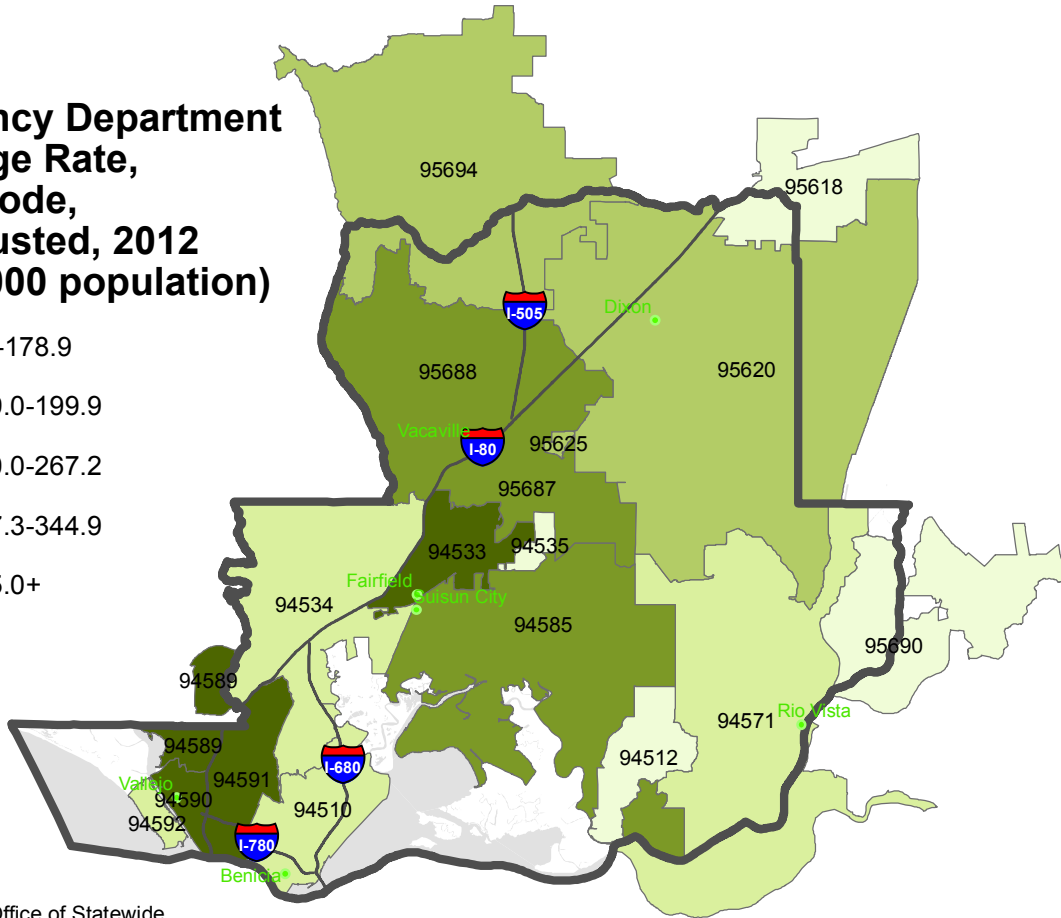
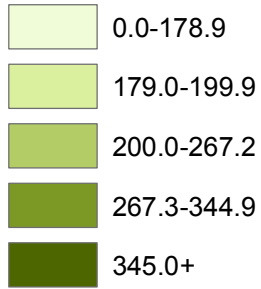


SOLANO COUNTY DIABETES INDICATORS

Emergency Department Discharge Rate, by Zip Code, Age-adjusted, 2012 (per 10,000 population)



Solano County ED discharge rate for diabetes was **1.6X** the California rate.

ED discharge rate for diabetes among **African Americans** was **2.2X** the rate among non-Hispanic Whites.

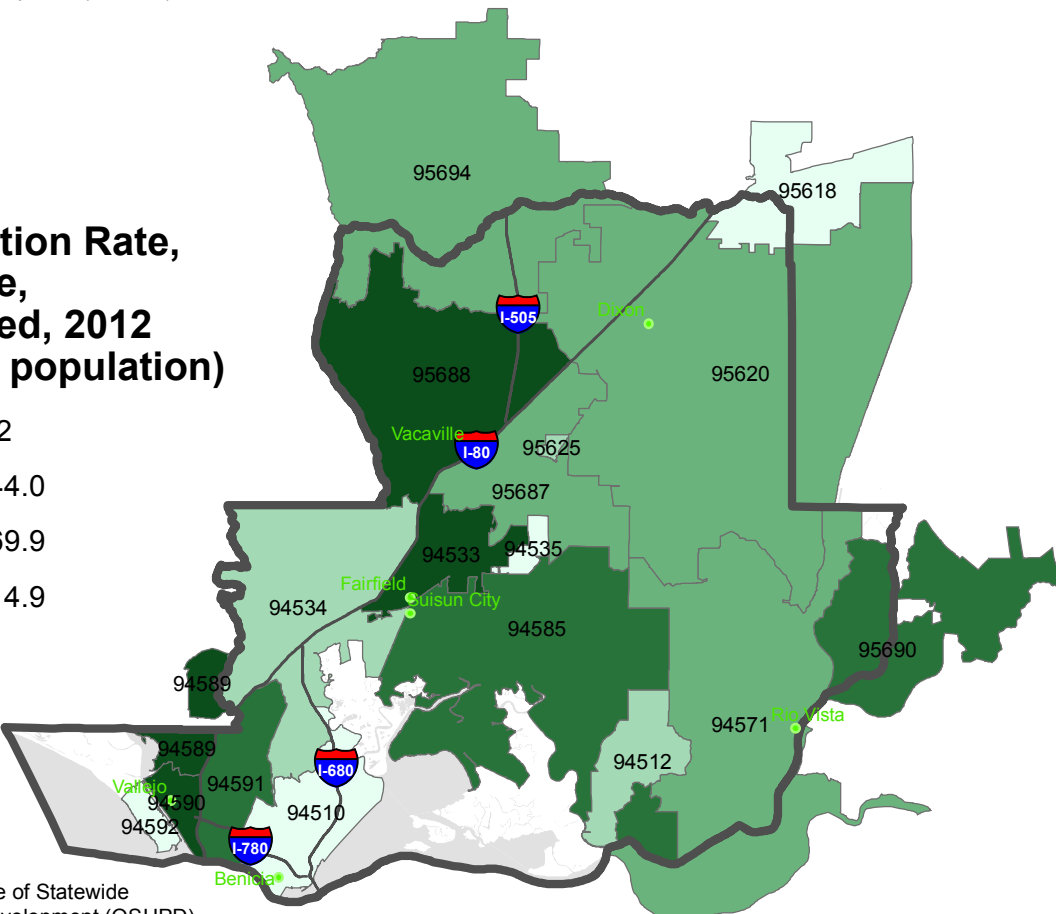
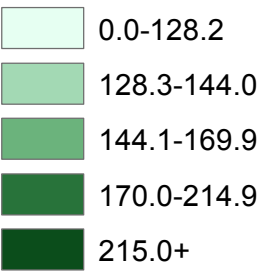
Solano county: 342.5 per 10,000
 African Americans: 743.6 per 10,000
 non-Hispanic Whites: 335.8 per 10,000
 California: 209.2 per 10,000
 Source: California Office of Statewide Health Planning and Development (OSHPD)

Percentage of Medicare Enrollees with Diabetes with Hemoglobin A1c Annual Test:

Solano County: 72.7%
 California: 81.5%

Source: Dartmouth Atlas of Healthcare, Dartmouth College Institute for Health Policy & Clinical Practice. 2012.

Hospitalization Rate, by Zip Code, Age-adjusted, 2012 (per 10,000 population)



HOSPITALIZATION RATE:

Solano County:
194.1 per 10,000

California:
192.3 per 10,000

Source: California Office of Statewide Health Planning and Development (OSHPD)

DEATH RATE:

Solano County: 25.8 per 100,000
California: 20.4 per 100,000

Percentage of adults 20 years old and older with diabetes:

Solano County: 9.8%
 California: 9.9%

Source: Behavioral Risk Factor Surveillance System, Centers for Disease Control and Prevention, 2013



1 IN 10

Solano County adults 20 years old and older has diabetes



Causing an average of 114 deaths per year in 2012-2014

Source: County Health Status Profile, California Department of Public Health, 2016

