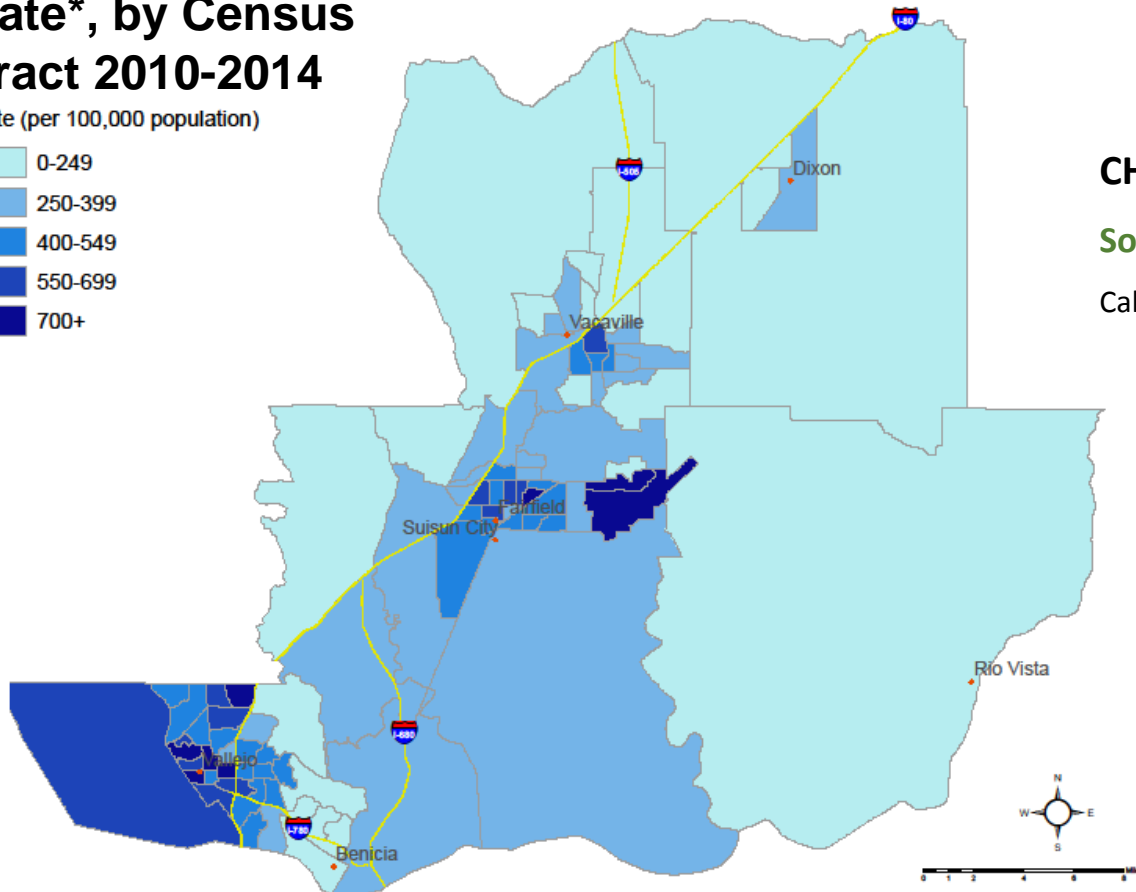


# SOLANO COUNTY CHLAMYDIA AND GONORRHEA RATES

## Chlamydia Incidence Rate\*, by Census Tract 2010-2014

Rate (per 100,000 population)

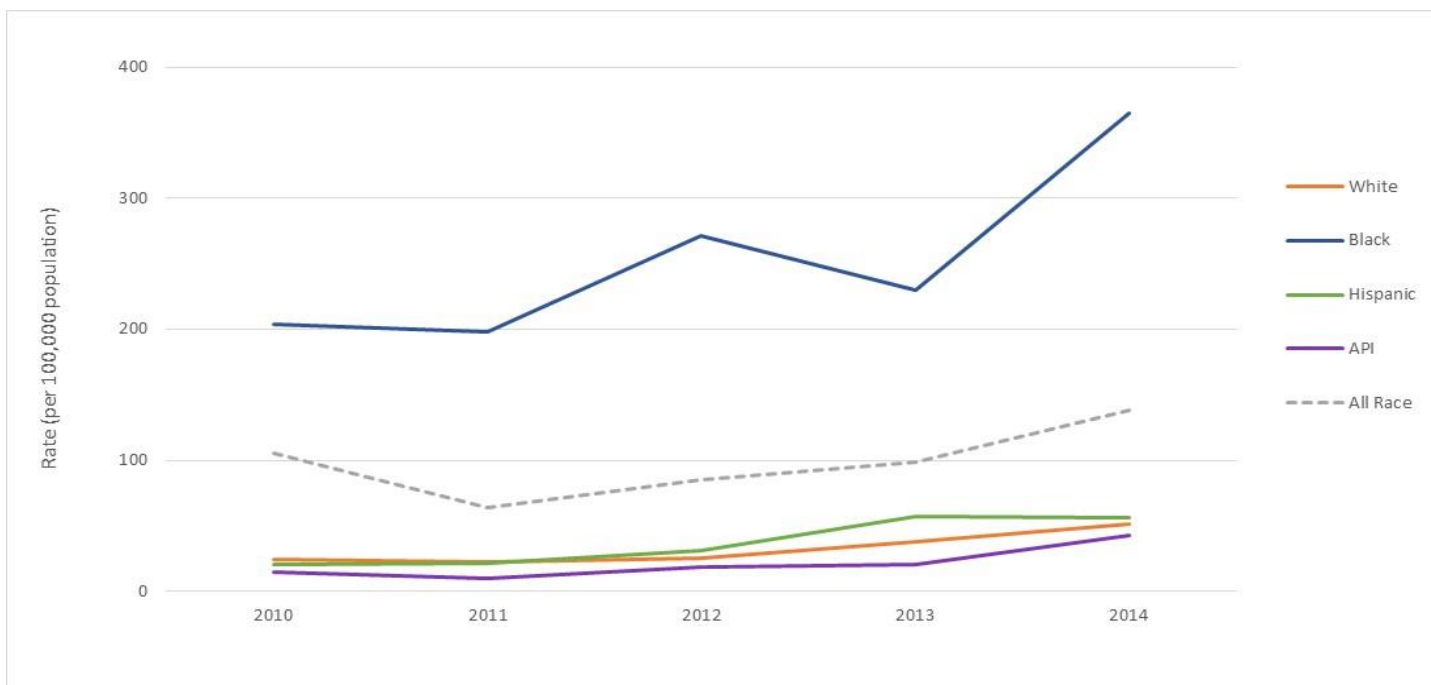


Data Source: California Department of Public Health, 2010-2014 Data

Produced by Epidemiology Unit, Solano Public Health, March 2016

**CHLAMYDIA INCIDENCE RATE\*, 2014:**  
**Solano County: 528.6 per 100,000 population**  
 California: 453.4 per 100,000 population

## Gonorrhea Incidence Rate\* per 100,000 Population, by Race/Ethnicity, 2010-2014



**GONORRHEA INCIDENCE RATE\*, 2014:**  
**Solano County: 138.2 per 100,000 population**  
 California: 116.8 per 100,000 population

**RACIAL DISPARITIES** exist in the incidence rates\* of Chlamydia and Gonorrhea

From 2010 to 2014, the incidence rates\* of chlamydia in Solano County among **African Americans** were **4-5X** higher than among non-Hispanic Whites.

Source: California Reportable Disease Information Exchange (CalREDIE)

From 2010 to 2014, the incidence rates\* of gonorrhea in Solano County among **African Americans** were **6-11X** higher than among non-Hispanic Whites.

Source: California Reportable Disease Information Exchange (CalREDIE)

\*Incidence rate is the number of new cases of disease during a specified time interval.