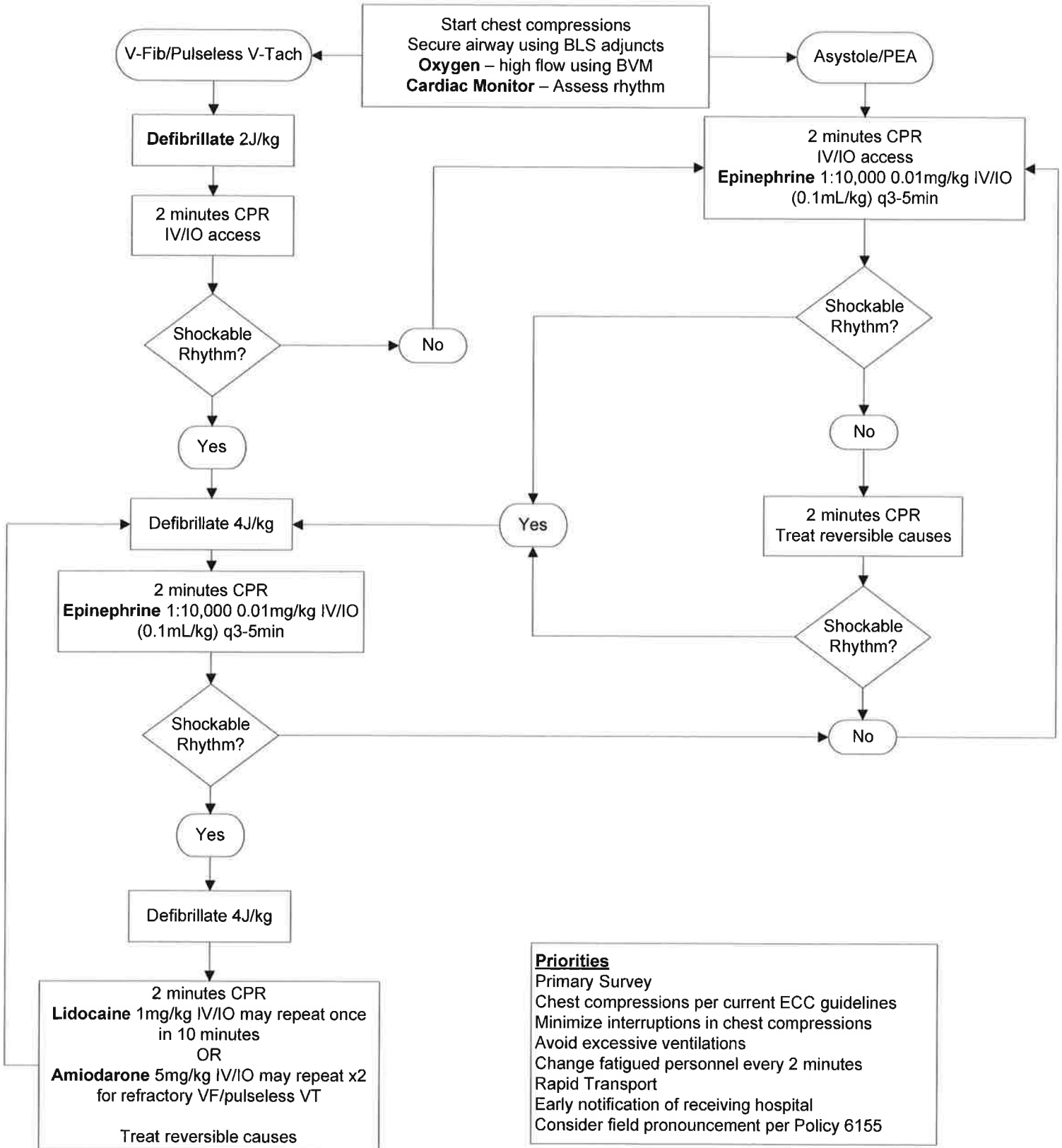


# Pediatric Emergencies

## P-1 Pediatric Cardiac Arrest



- Priorities**
- Primary Survey
  - Chest compressions per current ECC guidelines
  - Minimize interruptions in chest compressions
  - Avoid excessive ventilations
  - Change fatigued personnel every 2 minutes
  - Rapid Transport
  - Early notification of receiving hospital
  - Consider field pronouncement per Policy 6155

**DISRUPTED COMMUNICATIONS**  
 In the event of a "disrupted communications" situation, Solano County Paramedics may utilize all portions of this treatment protocol without Base Hospital Contact as needed to stabilize an immediate patient.