

# SOLANO COLLABORATIVE: COMMUNITY HEALTH NEEDS ASSESMENT (CHNA)

April 8, 2016

Katie Strautman, MSW

Heather Diaz, DrPH, MPH

Alan Lange, MPA

VALLEY VISION



*Connect. Partner. Impact.*

Promoting Health Equity: What the Data Tells Us

# Presentation Team –

## 3 things you need to know

- **Alan:** Authored more than two dozen health and human services program and system improvement plans; Loves wakeboarding and any outdoor activities; Loves to help people move.
- **Katie:** Worked in Washington, DC for the National Association of Counties on health-related projects for 3 years; Teaches group fitness class; Loves horses.
- **Heather:** Experience in doing CHNA since 2000 across the state; Loves really expensive coffee; Loves baseball season.

# About Valley Vision



**VV is:** a regional impact nonprofit focused on addressing economic, environmental and social challenges

**We do:** research, employ a collective leadership approach, and facilitate solutions to complicated public challenges

**Our vision is:** a prosperous and sustainable region for all generations

# CHNA Overview

VALLEY VISION



Connect. Partner. Impact.

*To identify and prioritize community health needs and identify resources available to address those health needs, with the goal of improving the health status of the community at large and for specific locations and/or populations experiencing health disparities.*

## Solano County CHNA Collaborative Partners include:



Conducted over a period of 13 months, beginning in  
April 2015 and concluding in May 2016

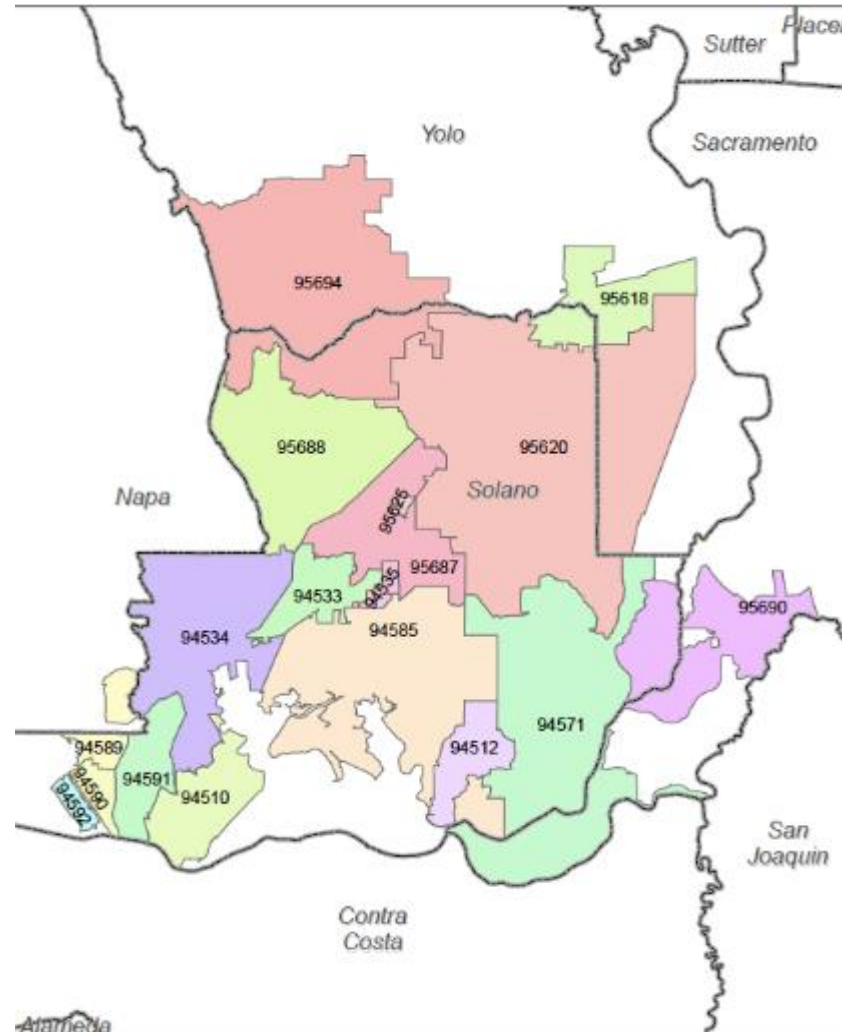
# CHNA Overview

- Timeline: April 2015 – May 2016
- BARHII Model: Use of theoretical framework to guide the data collection process
- Mixed Methods approach:
  - ▣ **170+** indicators were included in the CHNA
  - ▣ Primary data sample
    - **11** key informant interviews with **24** participants
    - **6** focus groups with **67** participants

# CHNA Health Needs

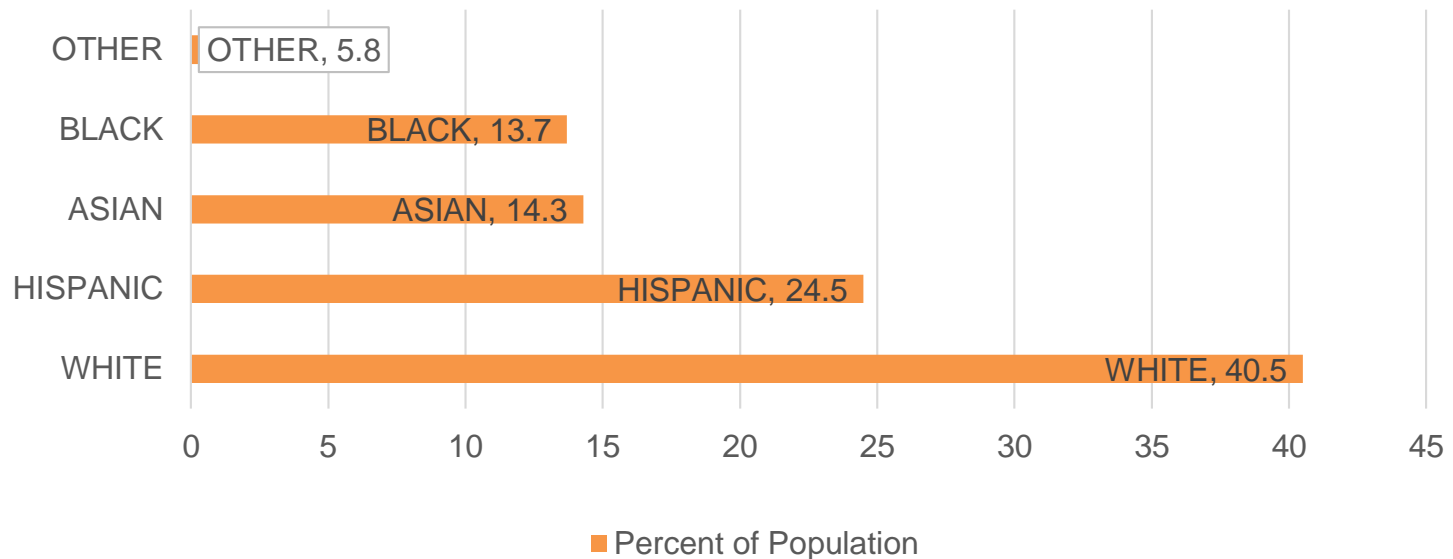
- Access to Behavioral Health Services
- Healthy Eating and Active Living
- Safe, Crime and Violence Free Communities
- Disease Prevention, Management and Treatment
- Affordable and Accessible Transportation
- Basic Needs (Food Security, Housing, Economic Security, Education)
- Access to High Quality Healthcare and Services
- Pollution-Free Living and Work Environments

# Solano County



# Solano County Demographics

Population Demographics for Solano County  
Race/Ethnicity



	Population	Median Age	Median Income
Solano County	417,258	37.1 years	\$67,177
CA State	37,659,181	35.4 years	\$61,094

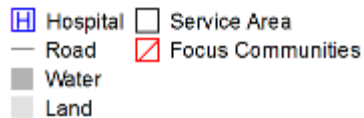
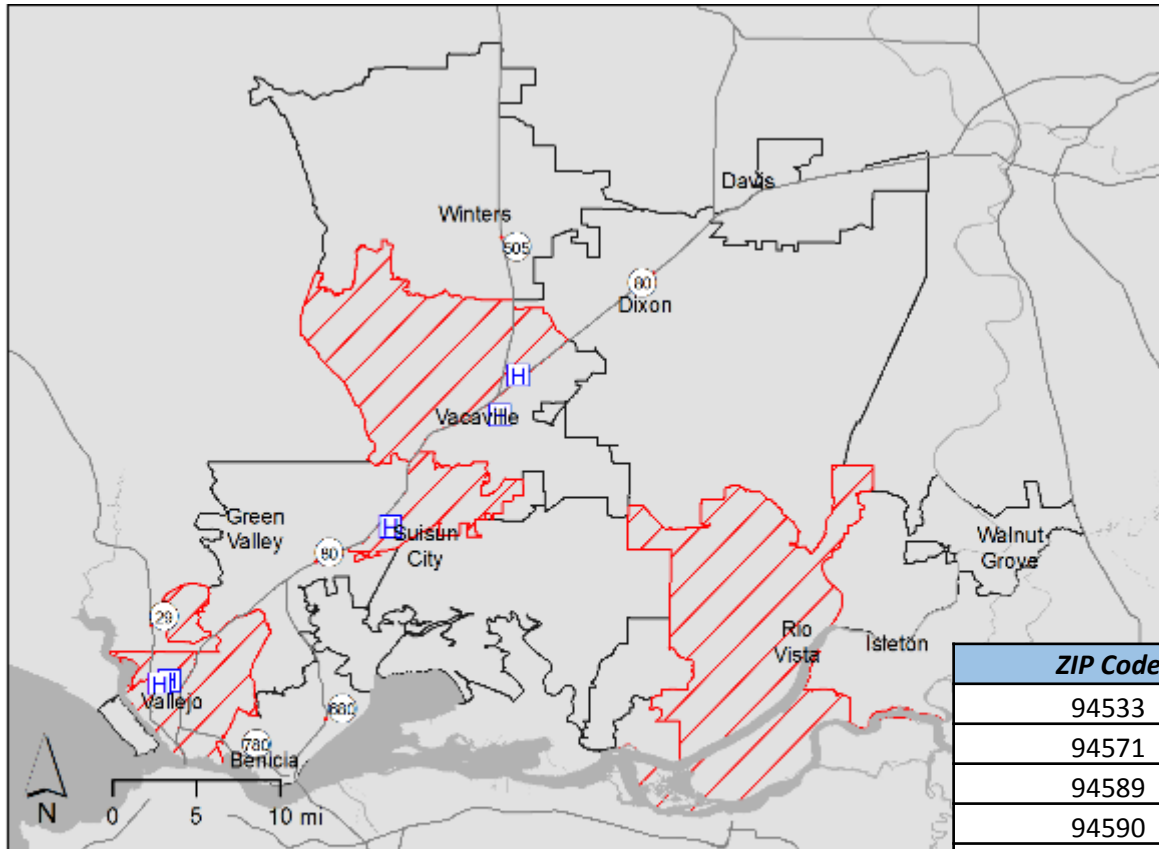
	100% below Federal poverty	Percent Uninsured	Percent Minority
Solano County	12.99%	12.9%	59.51%
CA State	15.94%	17.8%	60.33%



# Identifying Geographical Disparities

- Geographical disparities = locations in the county that had the greatest concentration of social inequities that may result in poor health outcomes.
- Defined through a 4-part process:
  1. Analysis of **22** indicators of social determinants of health and inequities (e.g., poverty and educational attainment) at the ZIP code level;
  2. Census tract values for **9** health inequities variables and mapped by GIS
  3. Initial input from area wide service providers
  4. Consideration of ZIP codes that were defined as Focus Communities in the 2013 CHNA report.

# Geographical Disparities

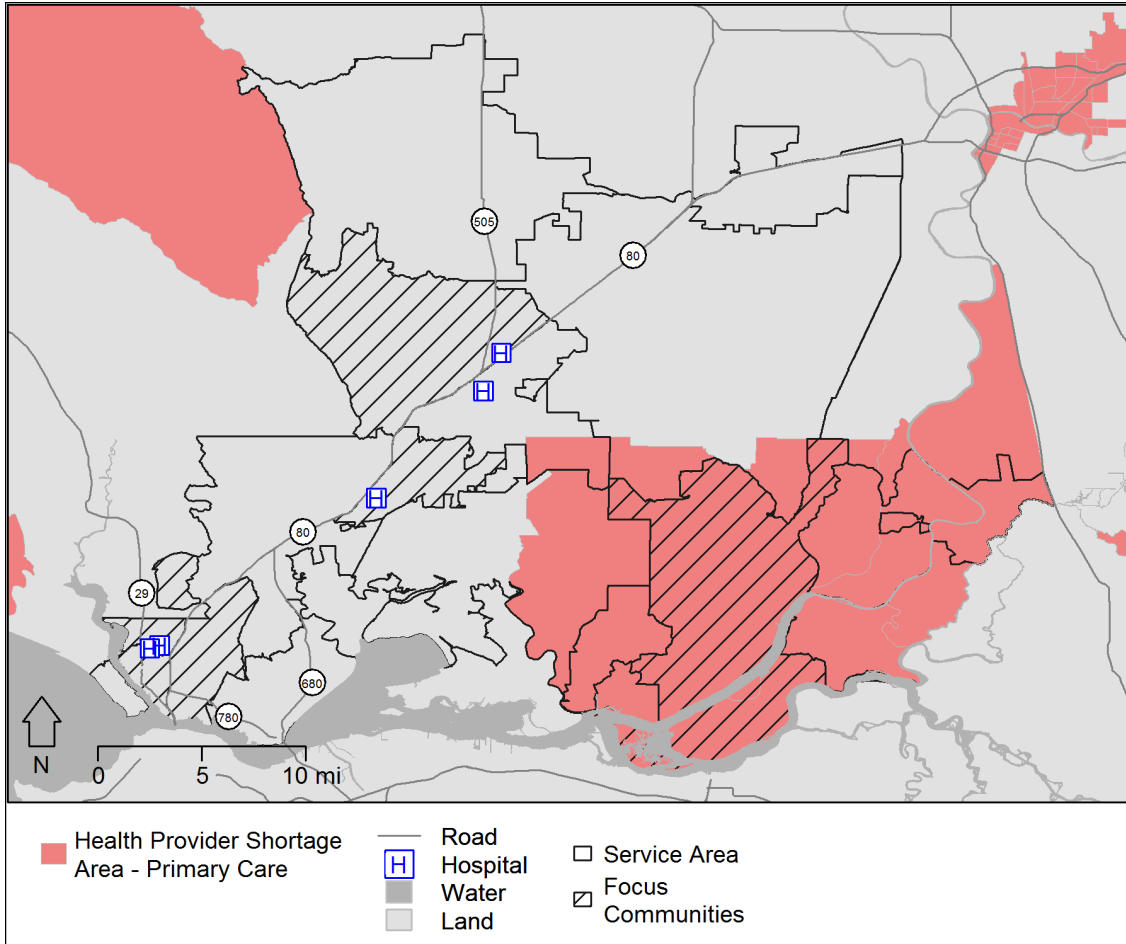


## Focus Communities

1. Inform primary data collection
2. Provide a place-based lens to examine how socio-economics is related to health outcome data

ZIP Code	Community/Area*	Population
94533	East Fairfield	69067
94571	Rio Vista	8025
94589	North Vallejo	30364
94590	South/Central Vallejo	35263
94591	East Vallejo	53548
95688	West Vacaville	34599
<b>Total Population in the Focus Communities</b>		<b>230,866</b>
<b>Total Population in the HSA</b>		<b>417,258</b>
<b>Percent of the HSA in the Focus Communities</b>		<b>55%</b>

# Findings: Primary Care



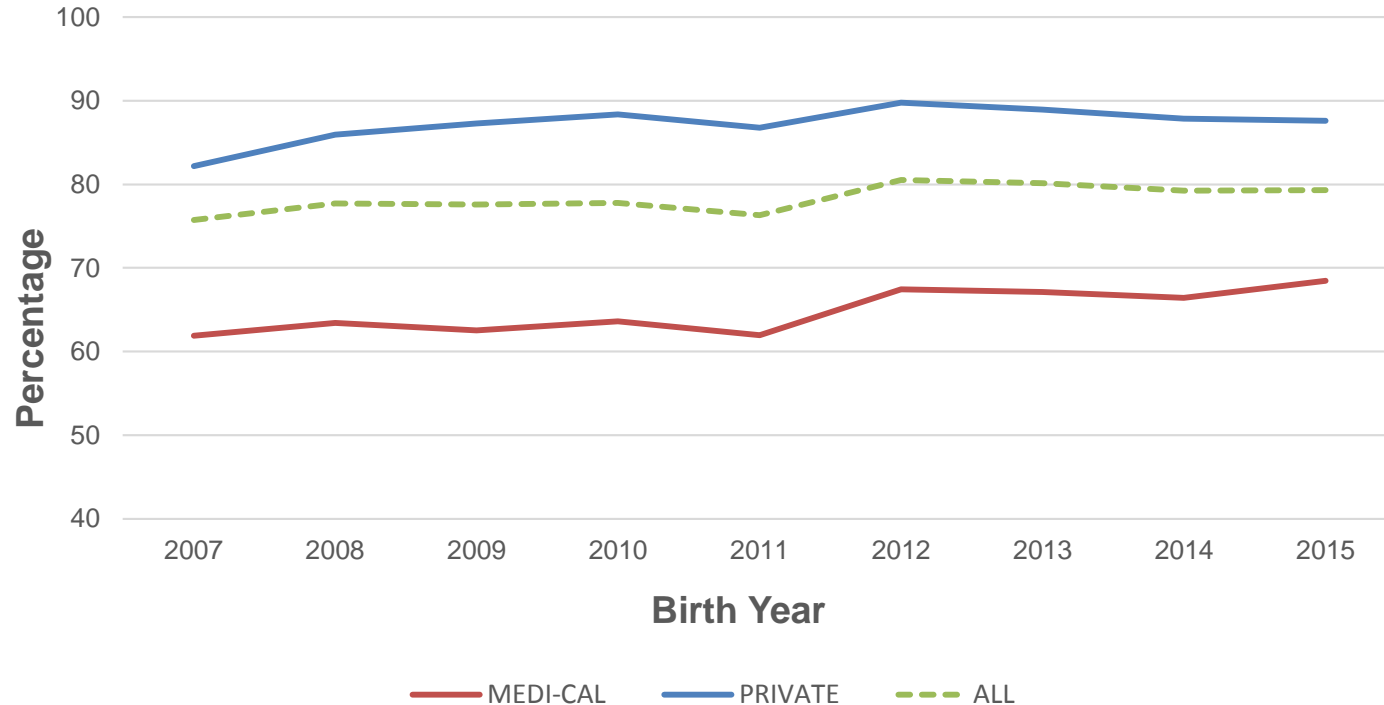
## Access to Primary Care (per 100,000)

Solano County	77.7
CA State	77.2

- Medi-Cal providers are hard to find
- Waiting times are long
- Coordinated, culturally competent care is important
- More information is needed to understand the health care system and how to access care

*“The Spanish speaking providers are called Unicorns because you can never find them” (KI\_7)*

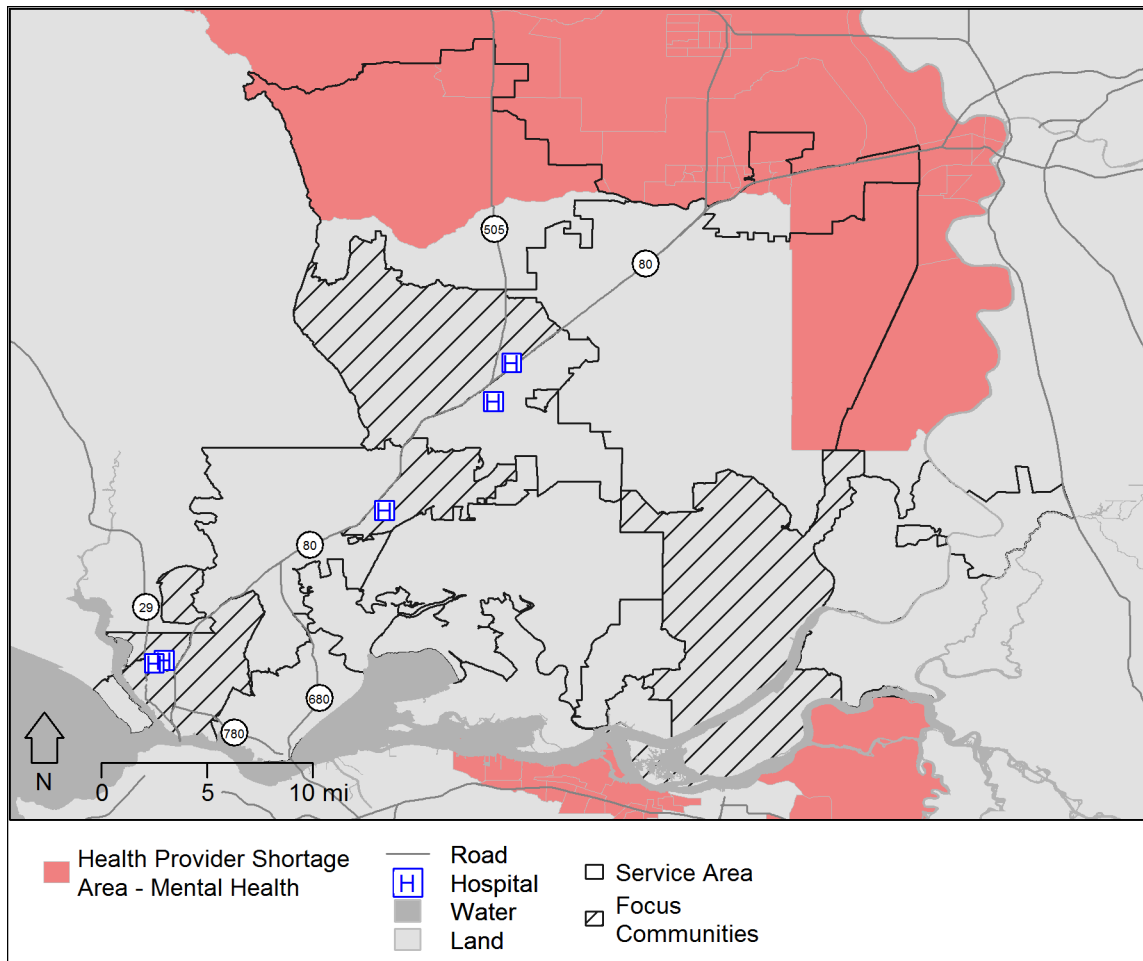
# Findings: Prenatal Care



On average over the past nine years, Medi-Cal early entry to prenatal was 34% lower than private insurance.

Data by race/ethnicity showed African Americans and Hispanics having lower rates of early entry to prenatal care compared to Whites.

# Findings: Mental Health



## Access to Mental Health Providers (per 100,000)

Solano County	169.5
CA State	157.0

## Access to behavioral health services

mentioned as a health need in 100% of primary sources

- Lack of psychiatrists and mental health providers
- Long wait times and provider insensitivity

# Findings: Mental Health

Mental Health (per 10,000)		
ZIP Code	ED Visits	Hospitalizations
94510	259.24	158.66
94512	91.34	109.80
94533*	259.14	186.82
94534	153.77	110.47
94535	12.44	27.20
94571*	293.13	281.61
94585	188.99	141.65
94589*	373.68	208.45
94590*	522.80	252.42
94591*	283.46	152.65
94592	272.90	158.46
95690	167.20	150.76
95694	148.55	115.95
95618	106.13	91.48
95620	160.04	126.71
95625	803.13	346.79
95687	227.13	154.28
95688*	230.35	200.83
<i>Solano County</i>	263.42	169.96
<i>CA State</i>	149.93	186.92

Poor Mental Health Days	
Solano County	3.3
CA State	3.6

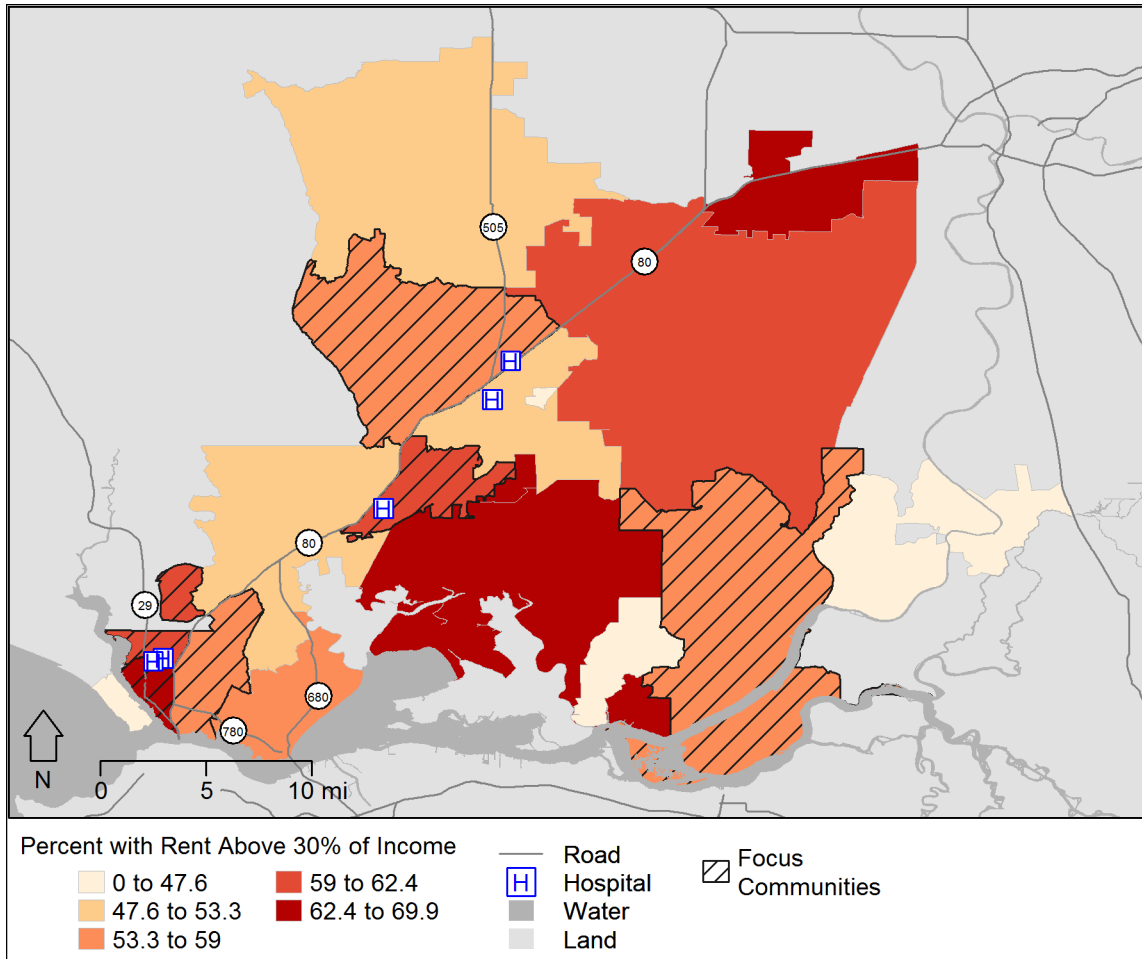
# Findings: Dental/Oral Health

Dental Health/Oral Diseases		
ZIP Code	ED Visits	Hospitalizations
94510	27.17	6.74
94512	32.32	0.00
94533*	102.77	10.72
94534	21.63	4.87
94535	6.82	3.70
94571*	39.85	10.52
94585	63.76	6.05
94589*	83.13	8.39
94590*	147.22	12.30
94591*	59.43	8.31
94592	40.25	7.47
95690	32.08	8.00
95694	38.71	5.76
95618	17.54	4.88
95620	37.98	6.77
95625	195.28	8.39
95687	49.86	7.82
95688*	45.45	9.90
<i>Solano County</i>	65.59	8.43
<i>CA State</i>	41.34	7.81

Access to Dentists (per 100,000)	
Solano County	85.5
CA State	77.5

*Data is dated from 2011-2013 before the reinstatement of dental coverage under the state Medicaid (Medi-Cal) program.*

# Findings: Economic Security



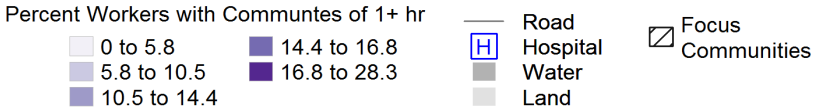
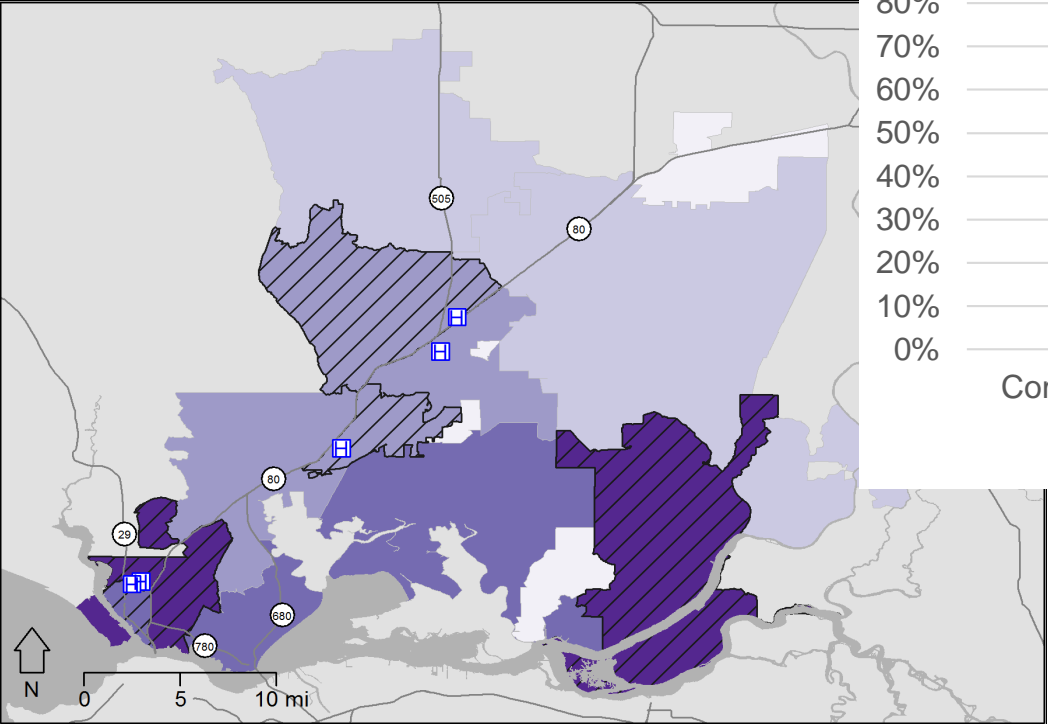
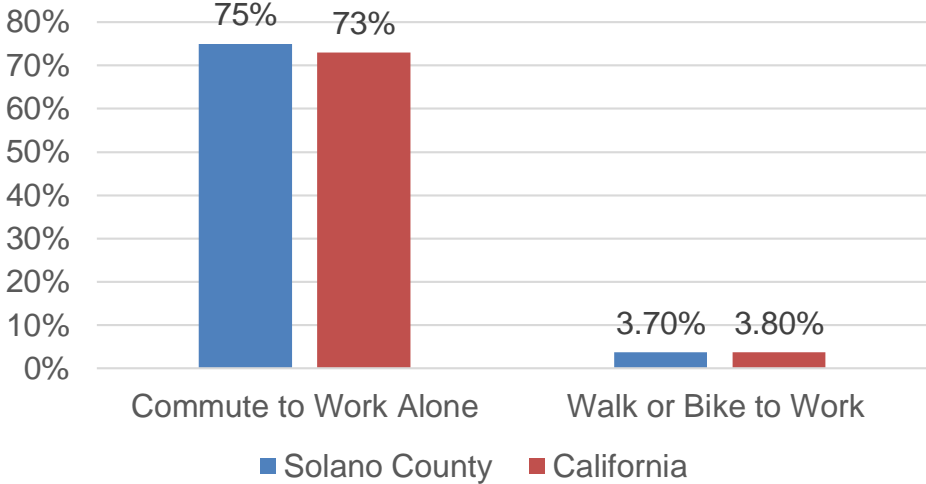
## Percent renters with housing expenses greater than 30% of income

Rio Vista*	94571	57.5%
Davis	95618	65.9%
Dixon	95620	60%
East Fairfield*	94533	59.5%
Travis AFB	94535	69.9%
Suisun City	94585	64.6%
North Vallejo*	94589	60.4%
South/Central Vallejo*	94590	63.7%
East Vallejo*	94591	58.8%
<b>Solano County</b>		<b>57.9%</b>
<b>CA State</b>		<b>56.9%</b>

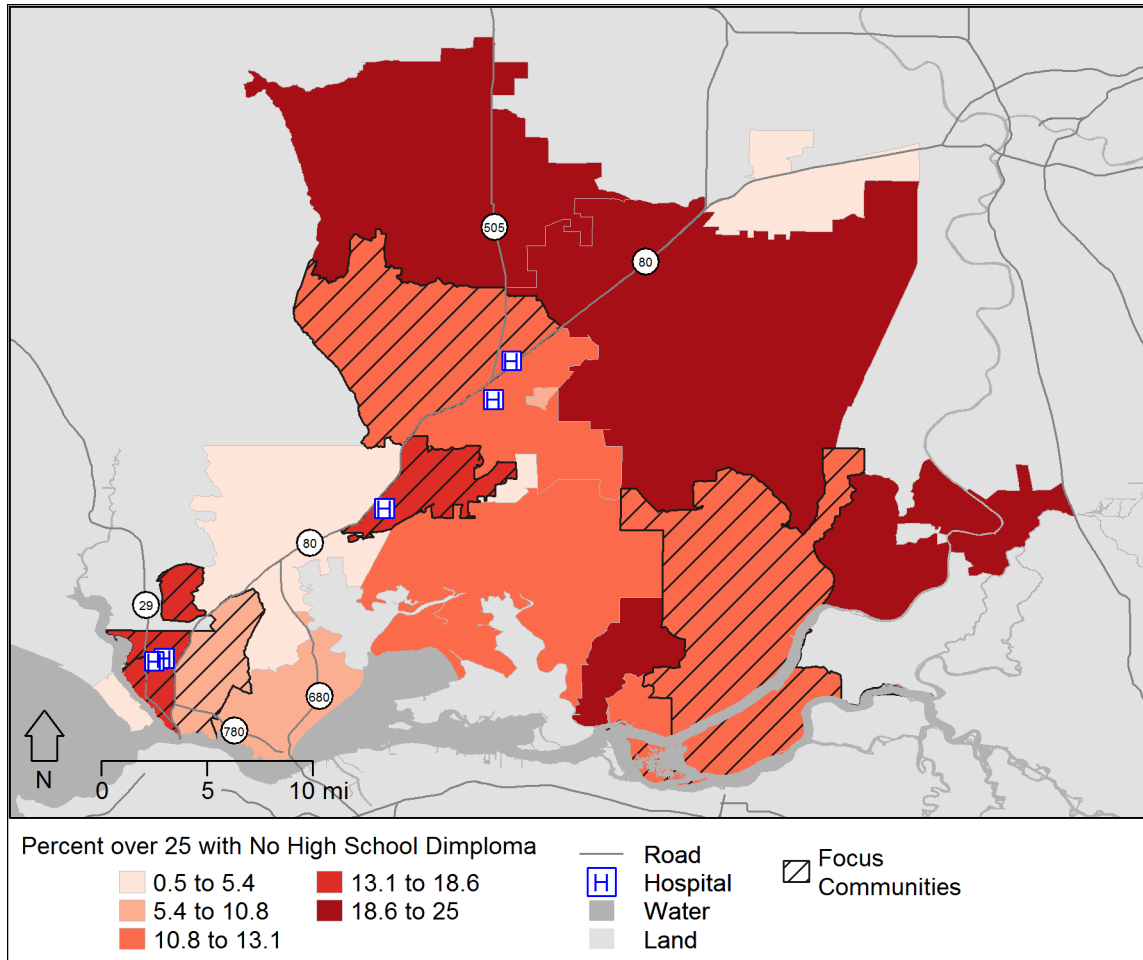


# Findings: Commuting to Work

## Workers Commuting Alone and Walk/Bike to Work



# Findings: Education



## Education – 4<sup>th</sup> Grade Reading Below Proficiency Level

Solano County	38%
CA State	36%

## Education – 4-year High School Graduation Rate

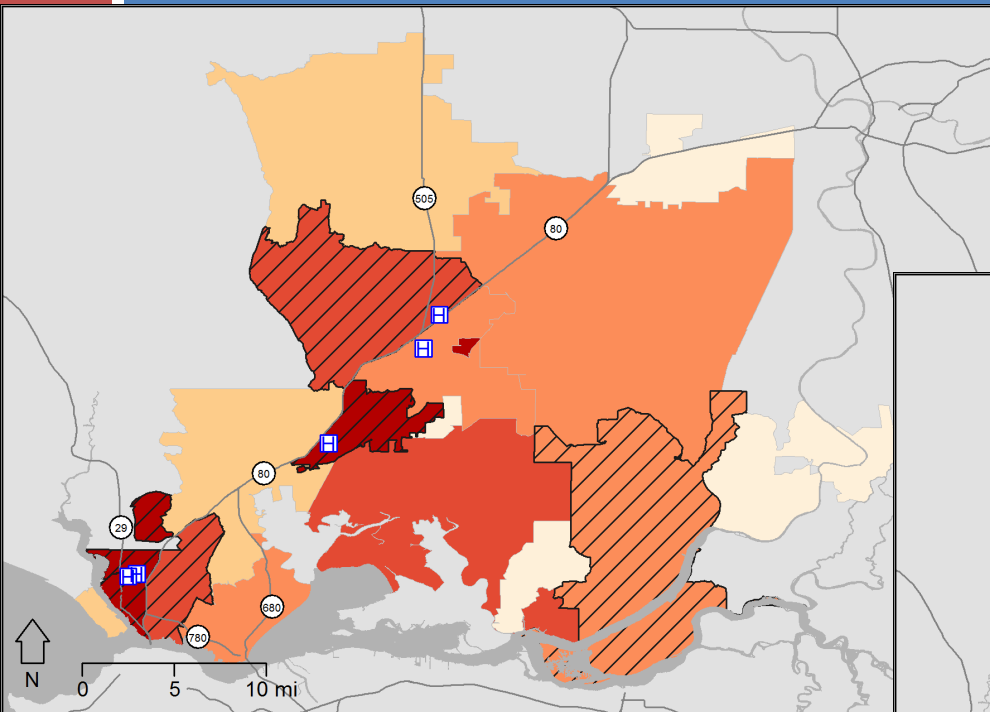
Whites	88.23%
Blacks	69.89%
Hispanic/Latinos	75.73%
Asians	90.95%
Non-Hispanic other	87.95%
Solano County	81.48%
CA State	80.44%

# Findings: Violence / Crime

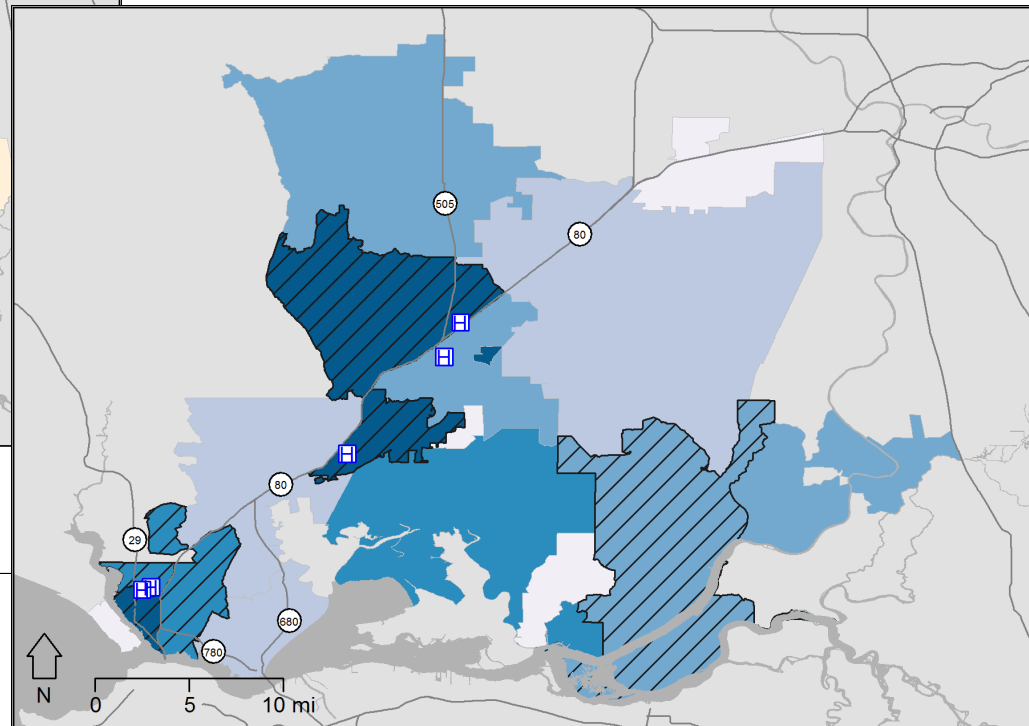
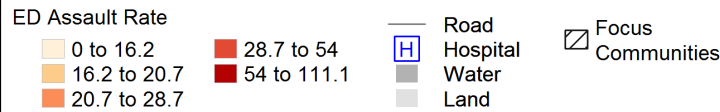
Police Municipality	Major Crimes*	Violent Crime	Property Crime	Arson	Domestic Violence
Benicia PD	154.64	11.02	140.68	2.94	26.81
Dixon PD	241.31	18.89	221.87	0.54	24.83
Fairfield PD	380.35	46.75	331.73	1.88	66.74
Rio Vista PD	374.45	42.95	328.81	2.68	33.55
Suisun PD	245.50	22.57	222.22	0.71	20.11
Vacaville PD	248.45	21.58	225.04	1.83	39.08
Vallejo PD	581.40	87.04	489.75	4.61	41.00
Solano County Sheriff Dept	333.88	64.35	263.73	5.80	33.76
<b>Solano</b>	<b>375.04</b>	<b>47.96</b>	<b>324.33</b>	<b>2.76</b>	<b>43.62</b>

*\*combination of violent crimes, property crimes and arson*

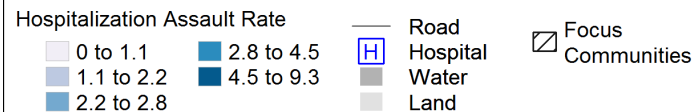
# Findings: Assault



**ED Rates (54 – 111.1):** 94533 (East Fairfield), 94589 (North Vallejo), 94590 (South/Central Vallejo), 95625 (Elmira)



**Hosp Rates (4.5 – 9.3):** 94533 (East Fairfield), 94590 (South/Central Vallejo), 95625 (Elmira)



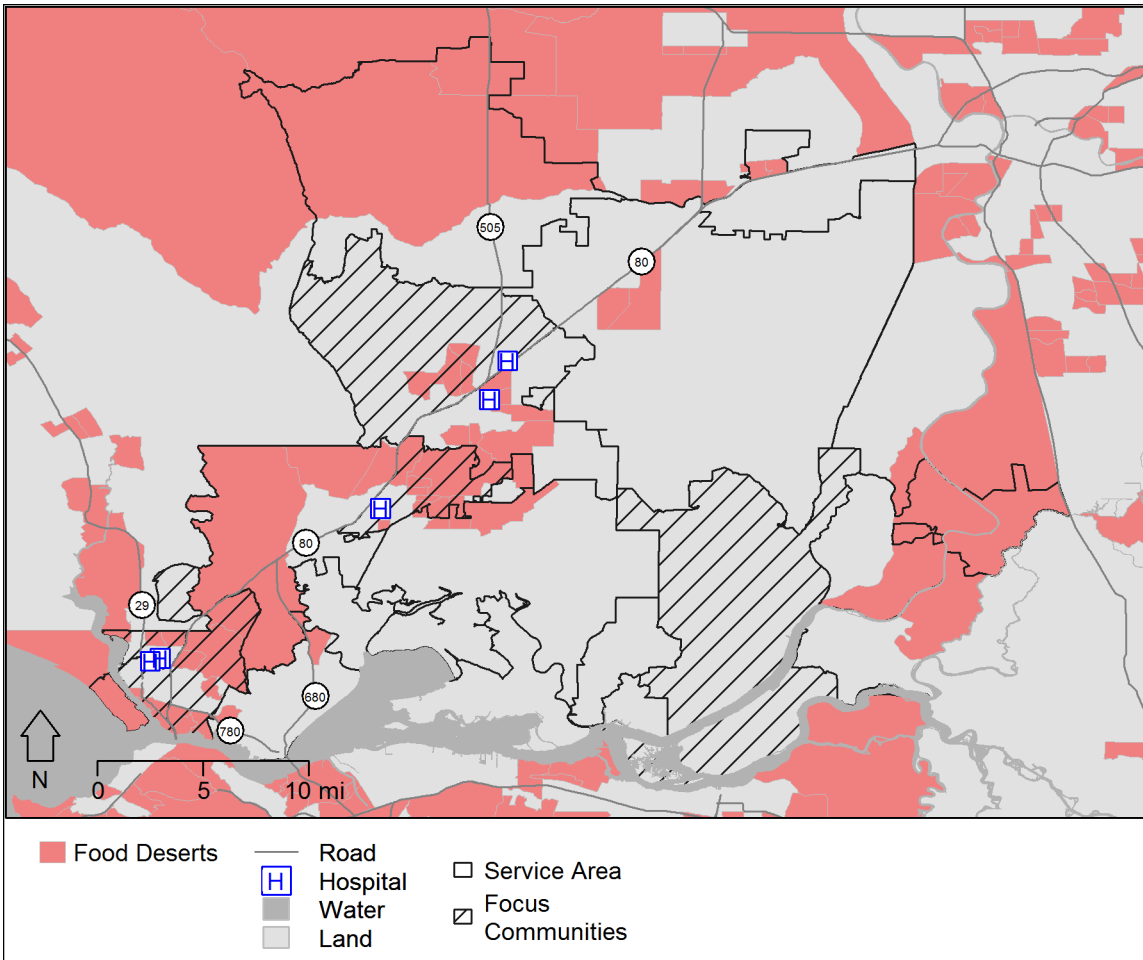
# Findings: School Suspensions

## Rate -- Suspensions per 100 students

The rate of suspensions as reported by the California Department of Education for the Solano County HSA was **12.4** per 100 students, three times above the state rate of **4.04** per 100 students.

- Safety concerns in high schools; lots of crimes, gangs and bullying
- Concern over park safety; homeless, active drug users, needles and gang activity even during the day
- Gang and gun violence is a concern throughout the county
- Alcohol and substance abuse mentioned as contributing to community violence
- Increased need for community and law-enforcement connectedness
- Concern over people growing up with few resources and turning to drugs and gang violence

# Findings: Food Deserts

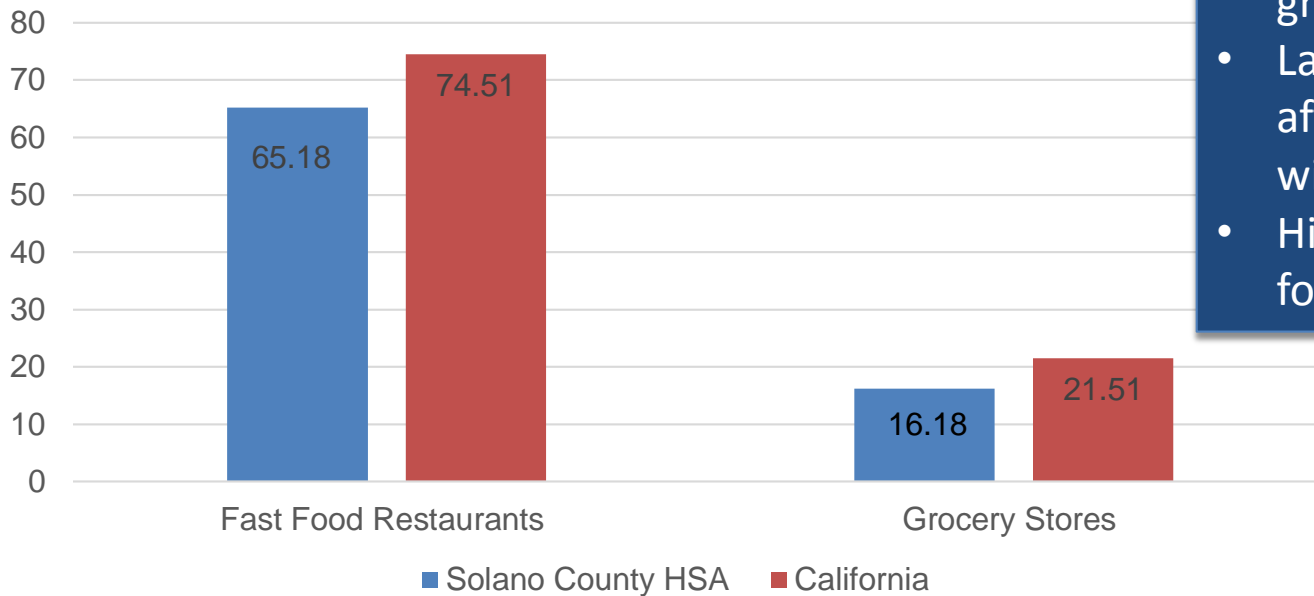


Portions of the following ZIP codes are in designated food deserts

ZIP	Community/Area
94533*	East Fairfield
94534	West Fairfield
94571*	Rio Vista
94585	Suisun City
94590*	South/Central Vallejo
94591*	East Vallejo
95618	Davis
95620	Dixon

# Findings: Food Environment

Rate of Fast Food Restaurants and Grocery Stores per 100,000 Population



- More liquor stores than grocery stores
- Lack of healthy and affordable food options within walkable distances
- High cost to eat healthy foods

*Trying to find healthy food is just difficult economically because it's so much more expensive than buying a Double Double at McDonald's and it's so much more convenient...in the neighborhood where I live, I live in apartments so I know most people don't buy healthy food because you have to go out of the way just to get that healthy food" (FG\_3).*

# Findings: Obesity/Overweight Youth

	Percent Overweight (Youth)	Percent Obese (Youth)
<i>Solano County</i>	20%	21%
<i>CA State</i>	<b>19%</b>	<b>19%</b>

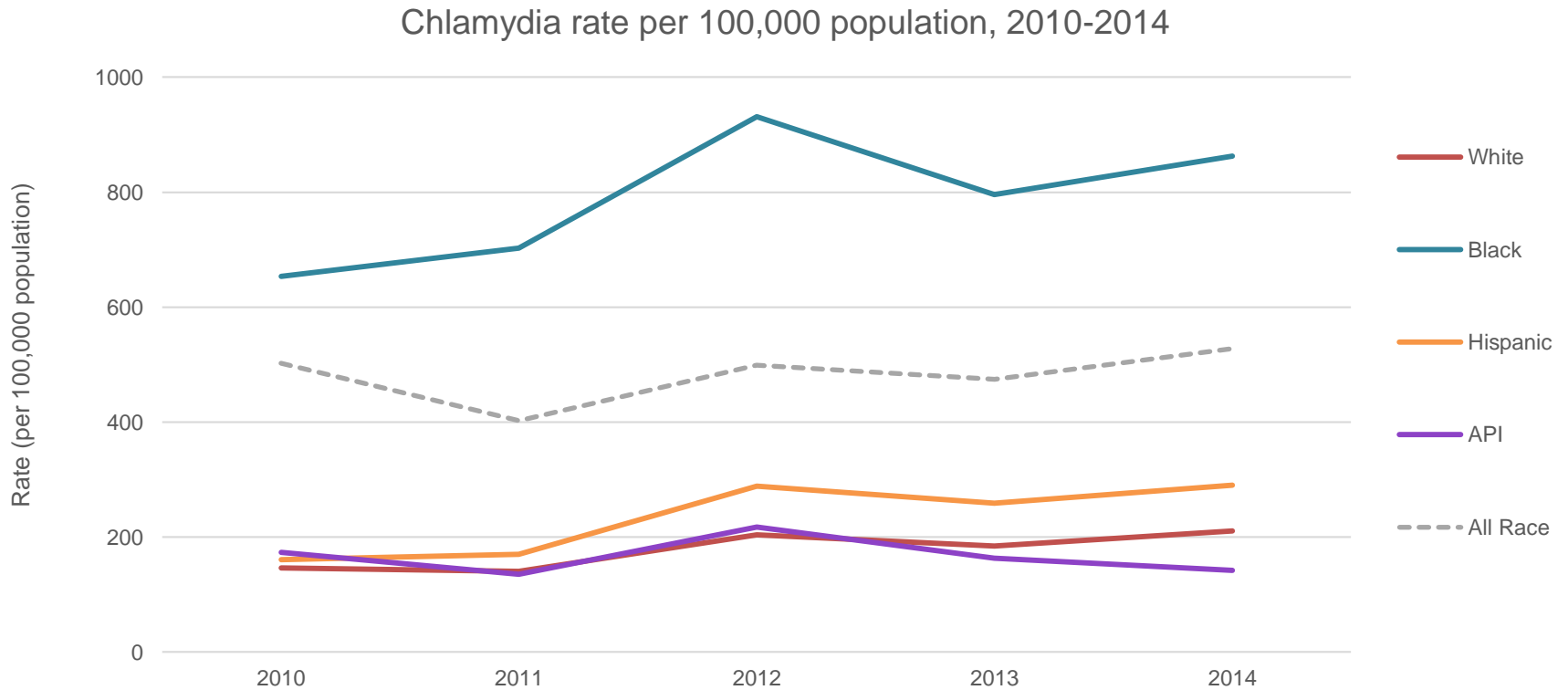
*“In Vallejo, we have more fast food restaurants than we have healthy exercising places”  
(FG\_4)*

- Lack of access to places to be physically active
- Crime and drug abuse; concerns with safety
- Large freeways, community feels spread-out

Percent Overweight (Youth) Race/Ethnic Disparities	
Whites	17.81%
Blacks	21.09%
Hispanic/Latinos	22.89%
Multiple Race	21.44%



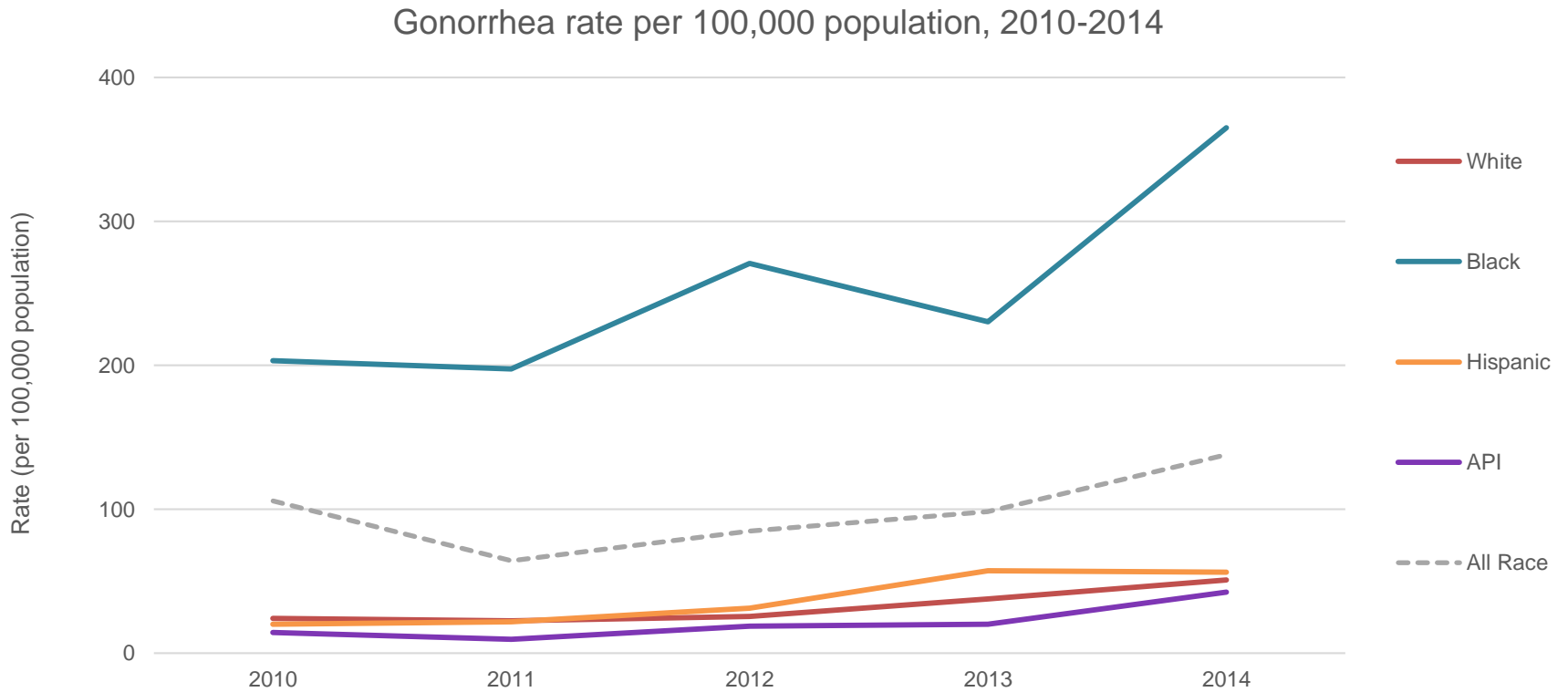
# Findings: Chlamydia Rates



## 2014 Chlamydia Incidence (per 100,000)

Solano County	528.6
CA State	453.4

# Findings: Gonorrhea Rates



## 2014 Gonorrhea Incidence (per 100,000)

Solano County	138.2
CA State	116.8

# Findings: Diabetes

Diabetes			
ZIP Code	Mortality	ED Visits	Hospitalizations
94510	2.26	199.41	117.45
94512	0.00	87.06	133.75
94533*	2.61	423.03	255.59
94534	2.03	199.96	135.41
94535	0.00	84.13	97.65
94571*	2.84	199.70	167.82
94585	1.84	310.40	212.19
94589*	3.01	545.31	260.74
94590*	2.76	663.37	281.21
94591*	2.19	367.11	182.60
94592	0.00	195.95	124.54
95690	0.00	167.35	175.72
95694	0.00	253.32	144.25
95618	1.51	118.82	76.11
95620	2.19	267.22	151.58
95625	0.00	221.28	143.26
95687	2.03	267.57	168.15
95688*	1.84	268.21	217.14
<i>Solano County</i>	2.56	342.51	194.13
<i>CA State</i>	2.11	209.15	192.30
<i>Healthy People 2020 Target</i>	6.60		

Diabetes Prevalence	
<i>Solano County</i>	9.50%
<i>CA State</i>	<b>8.05%</b>

Diabetes Management (Hemoglobin A1c Test)	
<i>Solano County</i>	72.70%
<i>CA State</i>	<b>81.50%</b>

# Findings: Hypertension

Hypertension			
ZIP Code	Mortality	ED Visits	Hospitalizations
94510	1.04	518.58	307.93
94512	0.00	177.29	197.70
94533*	1.11	812.33	463.84
94534	1.28	471.13	304.45
94535	0.00	178.31	160.26
94571*	1.38	474.27	342.28
94585	1.52	674.70	398.74
94589*	0.86	1088.87	449.31
94590*	0.00	1326.25	515.34
94591*	1.55	791.77	350.85
94592	0.00	553.06	343.74
95690	0.00	427.52	406.43
95694	0.00	515.71	264.10
95618	1.18	299.42	181.52
95620	0.99	513.23	274.60
95625	0.00	518.11	380.86
95687	1.21	587.33	358.80
95688*	1.07	631.85	486.77
<i>Solano County</i>	--	724.05	385.16
<i>CA State</i>	1.21	408.99	383.74

High Blood Pressure - Unmanaged	
<i>Solano County</i>	27.90%
<i>CA State</i>	<b>30.30%</b>

# Findings: Lung Cancer

ZIP Code	Lung Cancer Incidence	ED Visits Lung Cancer	Hospitalizations Lung Cancer
94510	6.51	6.99	10.02
94512	--	3.49	9.97
94533*	5.01	6.19	8.44
94534	3.98	5.92	7.43
94535	--	2.74	3.71
94571*	8.02	6.59	11.80
94585	3.87	2.75	8.58
94589*	6.85	7.93	11.52
94590*	7.00	10.12	15.74
94591*	6.22	10.65	11.96
94592	--	4.08	8.70
95690	--	2.93	12.16
95694	--	3.25	4.79
95618	2.11	0.51	2.58
95620	5.49	4.00	7.18
95625	--	0.00	0.00
95687	6.23	5.02	8.12
95688*	5.85	4.14	12.24
<i>Solano County</i>	5.45	6.80	10.06
<i>CA State</i>	4.54	2.68	7.95

Tobacco Usage (Adults and Teens) per 10,000	
<i>Solano County</i>	11.1
<i>CA State</i>	<b>10.80</b>

# In Summary

- A small portion of the indicators used in the assessment
- Iceberg- many Solano County rates are desirable in comparison to the state benchmark. Below the iceberg tip many communities in county struggling with health and social issues.
- Assessment will prioritize health needs based on primary data input and support of quantitative data at the county aggregate level- detail will help to tailor intervention efforts.

# Acknowledgements

- Benicia Community Action Council
- Children's Network of Solano County
- Circle of Friends
- Dixon Migrant Community Center
- La Clinica de la Raza
- Mission Solano
- Partnership Health Plan
- Planned Parenthood of Northern California
- Solano County Family Resource Centers
- Solano County Health and Human Services
- Solano Pride
- Vallejo Housing Authority

# THANK YOU!

VALLEY VISION



*Connect. Partner. Impact.*

Katie Strautman, MSW

Heather Diaz, Dr Ph, MPH

Alan Lange, MPA