

**SOLANO
City-County Coordinating Council**

MEMBERS

Linda J. Seifert
Chair
*Supervisor, Solano
County, District 2*

Elizabeth Patterson
Vice Chair
Mayor, City of Benicia

Jack Batchelor
Mayor, City of Dixon

Harry Price
Mayor, City of Fairfield

Norman Richardson
Mayor, City of Rio Vista

Pete Sanchez
*Mayor, City of Suisun
City*

Len Augustine
Mayor, City of Vacaville

Osby Davis
Mayor, City of Vallejo

Erin Hannigan
*Supervisor, Solano
County, District 1*

Jim Spering
*Supervisor, Solano
County, District 3*

John Vasquez
*Supervisor, Solano
County, District 4*

Skip Thomson
*Supervisor, Solano
County, District 5*

SUPPORT STAFF:

Birgitta Corsello
*Solano County
Administrator's Office*

Michelle Heppner
*Solano County
Administrator's Office*

Daryl Halls
*Solano Transportation
Authority*

Jim Lindley
City of Dixon

AGENDA

August 13, 2015

Location - Solano County Water Agency, Berryessa Room,
810 Vaca Valley Parkway, Suite 203, Vacaville, CA.

7:00 P.M. Meeting

PURPOSE STATEMENT – City County Coordinating Council

“To discuss, coordinate, and resolve City/County issues including but not necessarily limited to land use, planning, duplication of services/improving efficiencies, as well as other agreed to topics of regional importance, to respond effectively to the actions of other levels of government, including the State and Federal government, to sponsor or support legislation at the State and Federal level that is of regional importance, and to sponsor or support regional activities that further the purpose of the Solano City-County Coordinating Council.”

Time set forth on agenda is an estimate. Items may be heard before or after the times designated.

ITEM

AGENCY/STAFF

I. CALL TO ORDER (7:00 p.m.)

Roll Call

II. APPROVAL OF AGENDA (7:00 p.m.)

III. OPPORTUNITY FOR PUBLIC COMMENT (7:10 p.m.)

Pursuant to the Brown Act, each public agency must provide the public with an opportunity to speak on any matter within the subject matter of the jurisdiction of the agency and which is not on the agency's agenda for that meeting. Comments are limited to no more than 5 minutes per speaker. By law, no action may be taken on any item raised during public comment period although informational answers to questions may be given and matter may be referred to staff for placement on future agenda.

This agenda shall be made available upon request in alternative formats to persons with a disability, as required by the Americans with Disabilities Act of 1990 (42U.S.C.Sec12132) and the Ralph M. Brown Act (Cal.Govt.Code Sec.54954.2) Persons requesting a disability-related modification or accommodation should contact Jodene Nolan, 675 Texas Street, Suite 6500, Fairfield CA 94533 (707.784.6108) during regular business hours, at least 24 hours prior to the time of the meeting.

IV. CONSENT CALENDAR

1. Approval of Minutes for March 12, 2015 (*Action Item*) Chair Seifert

V. DISCUSSION CALENDAR

1. Air Quality Report (Oral Report)
(7:10 p.m. – 7:30 p.m.)

Presenters: Eric Stevenson, Director of Meteorology, Measurement and Rules Bay Area Air Quality Management District and Mat Ehrhardt, Air Pollution Control Officer, Yolo Solano Air Quality Management District

2. Legislative Update (Oral Report)
(7:30 p.m. – 7:50 p.m.)

Presenters: Karen Lange and Michael Pimentel, Shaw/Yoder/Antwih, Inc.

3. Update on Efforts to Address Regional Homelessness
(7:50 p.m. – 8:15 p.m.)

Presenters: Carolyn Wylie, Homebase and Jerry Huber, Director, Health and Social Services, Solano County

4. Update on Travis AFB Land Use Compatibility Plan
(8:15 p.m. – 8:30 p.m.)

Presenters: James Leland, Principal Planner, Solano County

5. Update on the Proposed Joint Land Use Study
(8:30 p.m. – 8:40 p.m.)

Presenters: James Leland, Principal Planner, Solano County

6. Moving Solano Forward Grant – List of Concepts and Outlined Proposal
(8:40 p.m. – 9:00 p.m.)

Presenters: Birgitta Corsello, CAO, Solano County, Sandy Person, President, Solano Economic Development Corporation, and Sean Quinn, Project Manager

VI. ANNOUNCEMENTS

VII. CCCC CLOSING COMMENTS

ADJOURNMENT: The next City-County Coordinating Council meeting is scheduled for November 12, 2015 at 7:00 p.m. at the Solano County Water Agency – Berryessa Room, 810 Vaca Valley Parkway, Suite 203, Vacaville, CA.

Future Items for Upcoming Meeting:

- Senior Issues - Senior Coalition Strategic Plan Update (Rochelle Sherlock), City of Benicia Aging in Place Update, League of California Cities First and Last Mile Concept, and STA Senior Mobility Update.
- Public-Public / Public-Private Partnership (P4) Update
- Workshop on Economic Diversity / Gap in Education for Future Employers

CITY-COUNTY COORDINATING COUNCIL
March 12, 2015 Meeting Minutes

The March 12, 2015 meeting of the Solano City-County Coordinating Council was held in the Berryessa Room at the Solano County Water Agency located at 810 Vaca Valley Parkway, Ste 303, Vacaville, CA 95688.

I. Roll and Call to Order

Members Present

Linda Seifert, Chair	Solano County Board of Supervisors (District 2)
Elizabeth Patterson, Vice	Mayor, City of Benicia
Scott Pederson	Councilmember, City of Dixon
Harry Price	Mayor, City of Fairfield
Norm Richardson	Mayor, City of Rio Vista
Pete Sanchez	Mayor, City of Suisun City
Len Augustine	Mayor, City of Vacaville
Osby Davis	Mayor, City of Vallejo
Erin Hannigan	Solano County Board of Supervisors (District 1)
Jim Spering	Solano County Board of Supervisors (District 3)
John Vasquez	Solano County Board of Supervisors (District 4)

Members Absent

Skip Thomson	Solano County Board of Supervisors (District 5)
--------------	---

Staff to the City-County Coordinating Council Present:

Birgitta Corsello	County Administrator, Solano County
Michelle Heppner	Legislative Officer, Solano County
Daryl Halls	Executive Director, Solano Transportation Authority

Guest Speakers and Other Staff Present

Nancy Huston	Assistant County Administrator, Solano County
Sandy Person	President, Solano Economic Development Corporation
J Paul Harrington	Project Manager, Solano Economic Development Corporation
Robert Macaulay	Director of Planning, Solano Transportation Authority
Gary Gottschall	Deputy Commander, 60th Operations Group, Travis Air Force Base
Steve Vancil	Chair, Airport Land Use Committee
Bill Emlen	Director, Resource Management, Solano County
Jim Leland	Principal Planner, Solano County
Narcisa Untal	Senior Planner, Solano County

I. Meeting Called to Order

The meeting of the City-County Coordinating Council was called to order at 7:24 pm due to technology challenges.

II. Approval of Agenda

A motion to approve the Agenda was made by Supervisor Spering and seconded by Supervisor Hannigan. Agenda approved by 11-0 vote.

III. Opportunity for Public Comment

No comments from the public.

IV. Discussion Calendar

1. Update on Transportation Funding (Informational Item)

Daryl Halls, Executive Director for Solano Transportation Authority provided an overview of the various transportation funding that the Solano Transportation Authority (STA) is tracking. Relative to Federal funding, he noted the need for Federal authorization of the four-year Federal Gas Tax which is scheduled to expire in May of 2015 and the need for reauthorization prior to the deadline. He also noted Congress has eliminated federal earmarks. Federal cycle funds which were previously more flexible and with fewer regional guidelines have been refocused by MTC and the Association of Bay Governments (ABAG) through the One Bay Area Grant program with an emphasis on Priority Development Areas (PDAs) and by the State with a required focus on reducing greenhouse gas emissions and addressing regional sustainable communities strategies.

Mr. Halls provided a brief overview of traditional state funding sources such as the State Transportation Improvement Program (STIP) and State Highway Operations and Protection Program (SHOPP), one time state programs such as the Traffic Congestion Relief Program (TCRP) and Proposition 1B funds, and regional Measure 2 bridge toll funds.

Relative to the various funding, Mr. Halls noted the significant projects underway in the County and include regional transportation priority projects such as the I-80 HOV Lanes, widening of SR 12 Jameson Canyon, the relocation and expansion of the I-80 Eastbound Cordelia Truck Scales, the initial phases of the I-80/I-680/SR 12 Interchange, phases of the Jepson Parkway and priority transit projects such as the Vallejo Ferry Parking Structure, Curtola Park and Ride Expansion, the Vacaville Transit Center.

Mr. Halls noted Governor Brown's recent State of the State address where he talked about \$59 billion worth of maintenance that is needed for state roads, highways, and bridges. Assembly Speaker Toni Atkins similarly announced that the Assembly is proposing \$2 billion per year over the next five years to address transportation infrastructure. Mr. Halls noted three bills currently in the Legislature addressing transportation funding including 1.) Assembly Member Jim Frazier's ACA 4 to lower the voter threshold for transportation taxes to 55 percent, 2.) Senator Jim Beall's SB 321 which would require the State Board of Equalization to use a five-year average of the sales tax when calculating the adjustment to the state excise tax that was implemented as part of the gas tax swap, and 3.) Assembly Member Luis Alejo's AB 227 that would undo the statutory scheme that allows vehicles weight fees from being transferred to the general fund from the State Highway Account to pay debt-service on transportation bonds and would require the repayment of any outstanding loans from transportation funds by December 31, 2018.

(More information is provided in the presentation slides Mr. Halls provided at the meeting and are attached to these minutes as part of the official record.)

2. Update on Travis AFB Land Use Compatibility Plan (Informational Item)

Bill Emlen, Director of the Department of Resource Management for Solano County introduced the item and Steve Vancil, Chair, Airport Land Use Committee, who provided the history and background. He noted that the Travis AFB Land Use Compatibility Plan was last updated in 2002 and several wind turbine developments have had an impact on base flight operations and changes at Travis regarding aircraft have also changed since 2002. Mr. Vancil noted that in 2012 the State of California changed their guidelines for airport land use compatibility plans which also creates the need for an update to the Travis AFB Land Use Compatibility Plan. Mr. Vancil introduced the consultant team, Steve Alverson and Harriet Ross from ESA Airports to provide an update and status of the Travis AFB Land Use Compatibility Plan.

Mr. Alverson provided a status update of the work efforts underway for the update of the Travis AFB Land Use Compatibility Plan, including preliminary information on noise modeling and a review of potential land use issues and airspace protection requirements. Mr. Alverson also provided an update of the schedule for the expected completion of the study and plans update which is expected to be October 2015.

Supervisor Sperring noted the two wind turbines that have been erected since the County adopted a moratorium and asked whether the cities were going to adopt similar moratoriums.

Jim Leland, Principal Planner with the Department of Resource Management of Solano County responded that when Travis AFB first realized the interference of the wind turbines, the primary focus was on the wind farm in the Montezuma Hills resulting in the County responding first. He stated that when the Budweiser turbines were first submitted by the city for review, the FAA and therefore the ALUC thought there was no concern relative to the Travis AFB Land Use Compatibility Plan so they were subsequently approved. Mr. Leland noted that since then Travis AFB has exhausted all its capacity to absorb any additional large turbines whether individual or wind farms because their radar is at the threshold of operational accuracy they do not want to get below. Mr. Leland stated a white paper is being developed on renewable energy and radar and the cities are involved in the workgroup's working with the ALUC. He noted they would be addressing "one-off" utility scale turbines in the new Travis AFB Land Use Compatibility Plan and work with cities to adopt regulations in accordance with that.

Several other questions were raised relative to habitat, including historic habitat areas, and noise requirements under the new Travis AFB Land Use Compatibility Plan. Staff noted their desire to bring the proposed Travis AFB Land Use Compatibility Plan back for another 2015 CCCC meeting, May was a potential target date.

(More information is provided in the attached presentation slides which were shared at the CCCC meeting and are attached to these minutes as part of the official record.)

3. Update and provide Direction on the Proposed Joint Land Use Study

Mr. Leland noted the County is involved with Travis AFB securing a Federal grant from the Department of Economic Adjustment for a Joint Land Use Study which will fund ninety percent of the project cost and the County will contribute the balance and serve as the host local partner to coordinate the effort. Mr. Leland noted this Joint Land Use Study will focus more on ground based operations and how they intersect with the surrounding cities and the County as well as any other public agencies. He noted that consistent with the requirements under the grant, the aim is to balance the interests of the military installation with local communities' goals and environmental requirements.

Mr. Leland stated the Joint Land Use Study will address three broad issues namely:

1. Urban Issues - Travis AFB and its intersection with the City of Fairfield, City of Suisun City, and the County relative to issues such as supply water, fence line issues, and urban growth expansion.
2. Environmental issues – mitigation and bird strikes
3. Spectrum encroachment - another brand of radar interference from cellular devices such as cellular towers and cellular phones/communications.

Mr. Leland noted that the JLUS study will address issues with the potential to impact the Base that would not customarily be addressed by the Airport Land Use Commission in its update to the Travis AFB Land Use Compatibility Plan.

Mr. Leland noted that Gary Gottschalk, Deputy Commander for the 60th Operations Group at Travis Air Force Base was also present to answer any questions. Chair Seifert asked Mr. Gottschalk if he had any comments. Mr. Gottschalk noted the Public-Public/Public-Private effort currently underway may provide an opportunity to include those ideas in the JLUS.

Mr. Leland requested the CCCC to take action to serve as the policy body and provide direction and feedback on the Joint Land Use Study as it progresses.

A motion to have the CCCC serve as the policy committee for the JLUS was made by Mayor Price and seconded by Supervisor Sperring. Motion approved by 11-0 vote.

4. Status of Climate Action Plans and Energy Efficient Programs throughout the County (Informational Item)

Robert Macaulay provided an overview of the process lead by the Solano Transportation Authority to ensure the cities of Dixon, Fairfield, Rio Vista, Suisun City, and Vacaville adopt Climate Action Plans. He noted CAPs have already been adopted by the cities of Benicia and Vallejo, and by Solano County.

Mr. Macaulay noted that the City of Dixon had not taken formal action on their Climate action Plan and that they would incorporate it into their General Plan when it is updated. He noted the City of Fairfield has their Climate action Plan scheduled to be heard by their Planning Commission on April 2015, and City Council consideration is expected in May. Mr. Macaulay noted the City of Rio Vista, City Council considered their Climate Action Plan on November 18, 2014 and a General Plan amendment to incorporate the Climate Action Plan will be considered at the City Council meeting of March 17, 2015. He further noted the City of Suisun City currently had no date has been set to take action on their draft Climate Action Plan.

Mr. Macaulay introduced Narcisa Untal, Senior Planner for the Resource Management Department for Solano County to provide an overview of some of the programs under the Climate Action Plans. Ms. Untal noted she would focus her discussion on energy efficiency. She noted that over the past year Solano County and its partners have been introducing cost-effective energy efficiency measures and financing programs for energy efficiency projects to public facilities, non-profits, schools, homes, farms, and businesses. These measures include residential furnace and cooling system replacement, commercial lighting and refrigeration upgrades, LED streetlight retrofits and many more.

Ms. Untal shared info on two energy efficient programs in Solano County. The residential program, Bay Area Regional Energy Network (BayREN), is administered by Suisun City for the seven cities and the County. Energy audits and rebates are offered through Energy Upgrade California and residential rebates range from \$1,000 to \$6,500 and multi-family rebates are available up to \$750 per unit. The commercial program, Solano Energy Watch (SEW), is a three-way partnership between Solano Economic Development Corporation (Solano EDC), Solano County, and Pacific Gas and Electric Company (PG&E).

Ms. Untal introduced J.Paul Harrington, Project Manager for Solano EDC, who provided an overview of the SEW program. Mr. Harrington noted that the SEW program provides a no-cost, no-obligation energy audit, project management services, and rebate handling. Rebates cover approximately 30%-100% of an energy efficient project cost and are subtracted from the customer's out-of-pocket, or financed, costs so there is no waiting weeks for a refund. Mr. Harrington also noted that the program is marketed by going out in pairs with their partner, PG&E, to promote the energy efficiency programs to businesses. He noted it has proven very beneficial as small business owners have limited time available.

In closing, it was noted that all sectors, including public facilities, schools, non-profits, farms, and residential customers are eligible for financing through Property Assessed Clean Energy (PACE) financing programs such as CaliforniaFIRST or HERO, if approved by their local government. PACE financing allows property owners to pay the project amount back as a line item on their property tax bill. Eligible projects include energy efficiency, renewable energy and water conservation upgrades.

5. Request for Reconsideration to Add Two Additional Members to the CCCC.

John Vasquez, Solano County Supervisor representing District 4, requested the CCCC reconsider previous discussion and direction regarding considering the addition of two members to the CCCC that represent schools. He noted that a lot is expected from the schools in terms of regional issues such as safe routes to schools, water usage, however they have no representation at the CCCC. He suggested the schools should be integrated into the CCCC to attend all the meetings and provide regular reports on school/district issues.

Mayor Sanchez noted he thought the CCCC was created by statute and wasn't sure additions were an option.

Birgitta Corsello, County Administrator for Solano County reminded the members that the CCCC was as a result of a voluntary MOU between the Mayors Conference and the Board of Supervisors who collectively adopted a formal set of bylaws and guidelines to ensure regional issues are vetted through the CCCC Joint Steering Committee. She noted the reason for the CCCC was to address efficiencies in government and redundancies and collaboration on regional issues.

Supervisor Spering asked if the request/suggestion was for a voting member or an ex officio member of the CCCC?

Supervisor Vasquez noted he thought they should have a seat whether voting or ex officio. Supervisor Spering noted his preference for ex officio based on the issues that are discussed at the CCCC and suggested they could provide a state of the school update annually to the CCCC.

Chair Seifert suggested before a decision is made to enquire whether they would be interested in sitting as an ex officio member and ascertain the schools leaders might see as the value for being included. She noted that if they found value in participating, schools should be invited to sit in an ex officio capacity perhaps as a pilot to begin with.

Mayor Patterson suggested an alternative approach by establishing a standard adhoc committee consisting of the various educational sectors such as K-12 schools, community college, and university level to report out on their respective issues. Mayor Patterson also noted the educational leadership are not all elected as are the members of the CCCC.

Mayor Augustine noted he is not in favor of having the education leadership as part of the CCCC because cities typically have committee meetings with the schools already. He suggested schools may be interested in meetings when education issues are being discussed and could be invited.

Mayor Davis also noted that he is not in favor of adding two members to the CCCC because Vallejo also has a standing committee meeting with Vallejo school

however they should be invited to attend when the CCCC discuss issues that pertain to them.

Mayor Sanchez noted that he and one of his council members meet with the school superintendent every other month to get updated on educational issues in Suisun City.

Chair Seifert noted her support of Supervisor Vasquez and pointed to the energy efficient item on the agenda and the discussion about the 18-25 year olds leading the workforce on selling energy efficient programs, noting the advantage of the educational leaders to help prepare youth for those types of jobs.

Mayor Davis noted he would prefer to deal with school district issues in his city and would not be interested in dealing with other cities school district problems at the CCCC.

Mayor Patterson stated her preference was for a subcommittee as the ideal option to address the different levels of education that are not only learning from each other but informing the CCCC. In addition, she noted to have healthy robust economic development in the region requires a well-educated workforce throughout the educational system, not limited to one level. Mayor Patterson also noted that having educational leaders have a permanent seat on the CCCC may not be a respectful use of their time given the variety of issues heard by the CCCC.

Mayor Patterson made a motion for an exploratory committee to work with the educational community and report back to the CCCC at a later meeting. Supervisor Spering seconded the motion. Motion passed by a by 7-3 vote. Nay votes were from Mayors Richardson, Sanchez, and Augustine.

VI. ANNOUNCEMENTS:

No announcements.

V. ADJOURNMENT: The meeting was adjourned at 9:06 p.m. The next meeting will be on May 14, 2015 in the Berryessa Room at the Solano County Water Agency located at 810 Vaca Valley Parkway, Ste 303, Vacaville, CA 95688.

Transportation Funding Update

lions+tigers+bears
OH MY!



Solano Transportation Authority Presentation at
City County Coordinating Council Meeting, March 12, 2015

1

Federal Gas Tax



- Tax has not fluctuated
- 18.4 cents per gallon (since 1994)
- Distributed through Surface Transportation Program (STP), administered through MPO's (MTC) and CMA's (STA) through One Bay Area Grant (OBAG) Program
 - \$5.1M went to local streets and roads last cycle

2

Federal Funding for Projects

REGIONAL PROJECTS – ONE BAY AREA GRANT FUNDED PROJECTS SELECTED BY STA

STA OBAG PROJECTS		FY 2012-13, 13-14, 14-15, 15-16
Sponsor	Projects	Amount
Benicia	Industrial Park Transit Hub	500,000
Suisun	Suisun Train Station Improvements	600,000
Vacaville	Allison Dr Sidewalk + Class I to Transit Center	450,000
Vacaville	Ulatis Creek Class I (McClellan to Depot)	500,000
Vallejo	Vallejo StreetScape (Maine St)	1,095,000
		TOTAL \$ 3,145,000



3

Federal Funding for PDA Projects

REGIONAL PLANNING – ONE BAY AREA GRANT FUNDED PRIORITY DEVELOPMENT AREA (PDA) PLANS SELECTED BY STA

STA OBAG PDA Plans	FY 2012-13, 13-14, 14-15, 15-16
Sponsor	Amount
Benicia	250,000
Dixon	75,000
Fairfield*	850,000
Rio Vista	161,000
Suisun City*	163,000
TOTAL	\$ 1,499,000

*MTC PDA Planning Grants



4

Federal Funding for PCA Projects

REGIONAL PROJECTS – ONE BAY AREA GRANT PRIORITY CONSERVATION AREA PROJECTS SELECTED BY STA

STA OBAG PCA PROJECT		FY 2012-13, 13-14, 14-15, 15-16
Sponsor	Project	Amount
Solano County	Farm to Market Project	\$1.2 M



5

Federal Funding

- What's on the Horizon?
 - New Highway Funding Bill set to expire May 2015
 - President's Budget proposes taxing foreign earnings to fund \$248 billion over 5 years
 - Some discussion in Congress for funding federal transportation bill.
 - 4 Year Program, MTC recently added 5th year



6

“A hundred years after we are gone and forgotten, those who never heard of us will be living with the results of our actions.”

Oliver Wendell Holmes, US Supreme Court Justice



7

State Funding

Proposition 1B Bonds have provided a total of **\$192M** for the following projects from 2006 to 2015:

- \$74M SR 12 Jameson Canyon Project
- \$44M I-80 High Occupancy Vehicle (HOV) Lanes
- \$50M I-80 Eastbound Cordelia Truck Scales Relocation
- \$24M I-80/I-680/SR 12 Interchange

- ***Prop 1B is fully allocated and will no longer be a source of revenue for Solano.***



8

State Funding



State Transportation Infrastructure Program (STIP) – *the primary State funding source for transportation infrastructure projects* - has funded the following Solano projects in recent years (2004-2014):

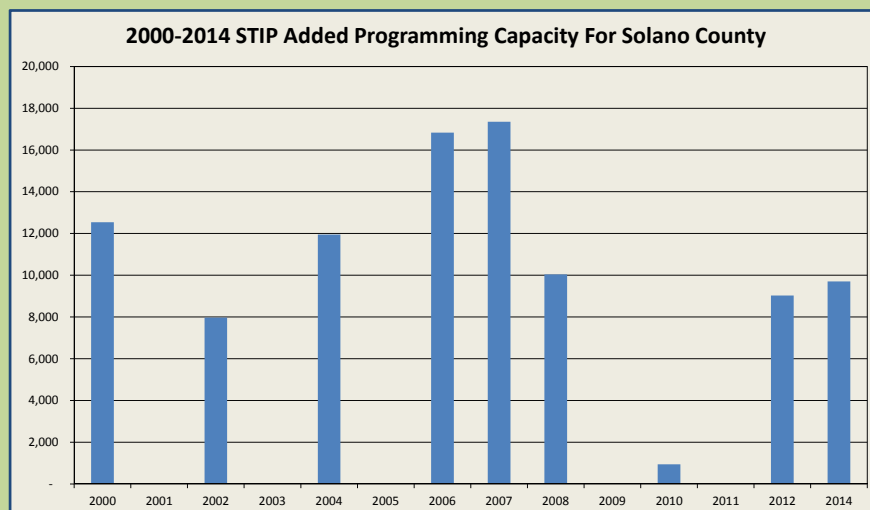
- \$11M I-80/I-680/SR 12 Interchange
- \$54M Jepson Parkway Project (I-80 Reliever Route) – includes Fairfield and Vacaville segments
- \$4M Fairfield/Vacaville Intermodal Station



The STIP has been an up and down fund source for Solano County.

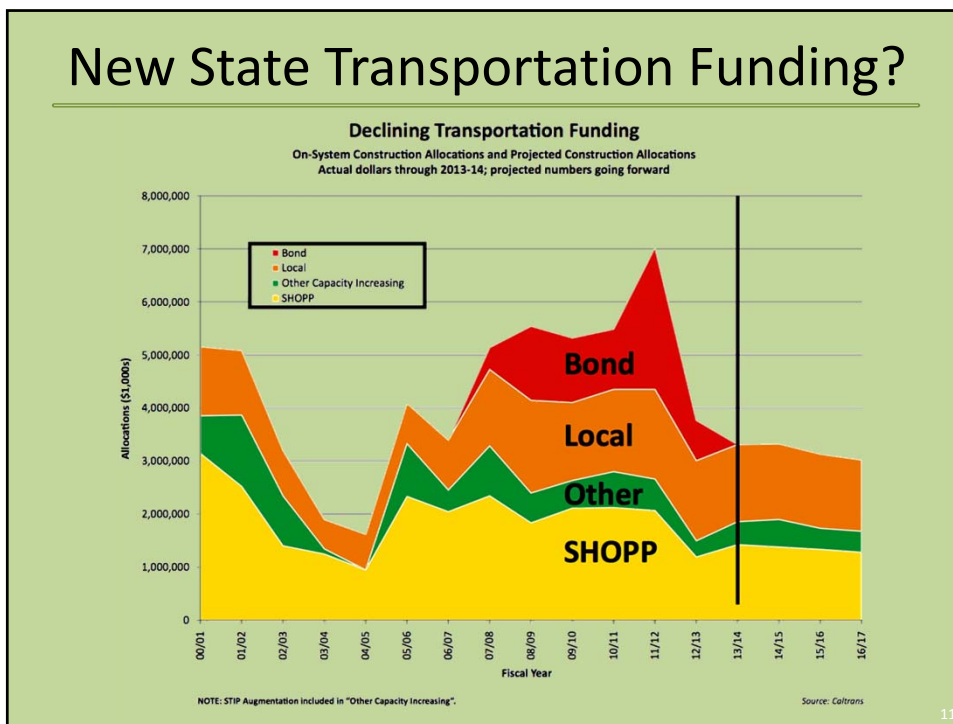
9

State Transportation Improvement Program (STIP)



10

New State Transportation Funding?



Regional Funding

Regional Measure 2 (RM 2) added a 4th voter-approved dollar to bridge tolls which have provided a total of \$180M for the following Solano projects (2004 to 2014):

- Benicia Bus Hub – Construction to start in 2015
- I-80 Cordelia Truck Scales - Completed
- Fairfield/Vacaville Intermodal (Rail) Station – Phase 1 to start Construction in 2015
- North Connector (Suisun Parkway) - Completed
- Vallejo Transit Center at Curtola and Lemon – Under Construction
- Vacaville Transit Center - Completed
- Vallejo Station Parking Structure – Completed
- ***RM 2 is fully allocated and will no longer be a major source of revenue for Solano***





13

Local Transportation Funding

REGIONAL TRANSPORTATION IMPACT FEE (RTIF)

- STA has partnered with Solano County and the seven cities to incorporate a transportation fee into the County Public Facility Fee in 2014 – which did not increase the facility fee developers currently pay.
- County Board of Supervisors approved the updated Public Facility Fee with the RTIF added on December 3, 2013 and new fee started to be collected in February 2014.
- \$780,000 collected over the first 11 months of program resulted in full funding agreements for 2 RTIF eligible projects:
 - Green Valley Interchange
 - Benicia Bus Hub Project



14

Local Funding Options

PRIVATE INVESTMENT

- JEPSON PARKWAY –
FAIRFIELD/VACAVILLE INTERMODAL STATION
- SUISUN VALLEY PARKWAY
(I-80 ARTERIAL RELIEVER ROUTE)
- SR 12 / CHURCH ROAD, RIO VISTA



15

Local Funding Options

PUBLIC PRIVATE PARTNERSHIP

- VALLEJO CURTOLA PARK & RIDE HUB



16

State Gas Tax Revenue Changes

Projected Decrease in Local Streets & Roads Funding



17

Local Streets & Roads Revenue

- Federal Gas Tax
 - Surface Transportation Program (STP)
- State Gas Tax
 - State Base Gas Tax
 - State Price Based Gas Tax
- Local Sources
 - General Fund
 - Local Sales Tax



18

OBAG Cycle 1 – Solano Share: \$5.1M

- Federal STP formula funding results

- Benicia: \$390K
- Dixon: \$460K
- Fairfield: \$1.12M
- Rio Vista: \$0* (Swapped for TDA)
- County of Solano: \$1.094M
- Suisun City: \$280K
- Vacaville: \$970K
- Vallejo: \$784K




*Rio Vista Recommended for \$47k

19

Life is really simple, but we
insist on making it complicated.
- Confucius

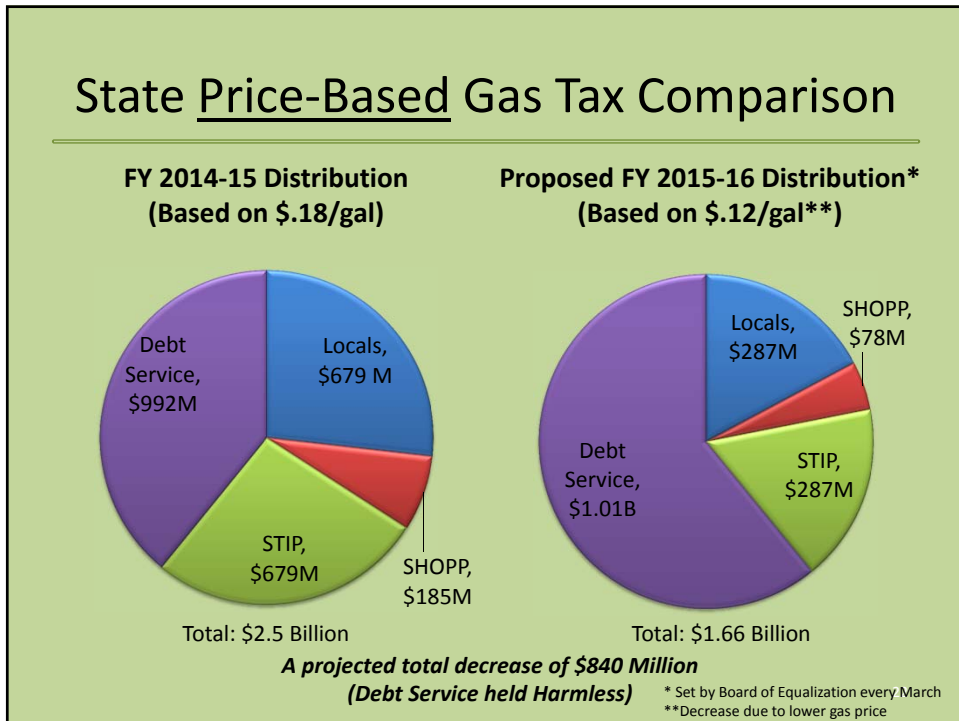
20



State Gas Tax

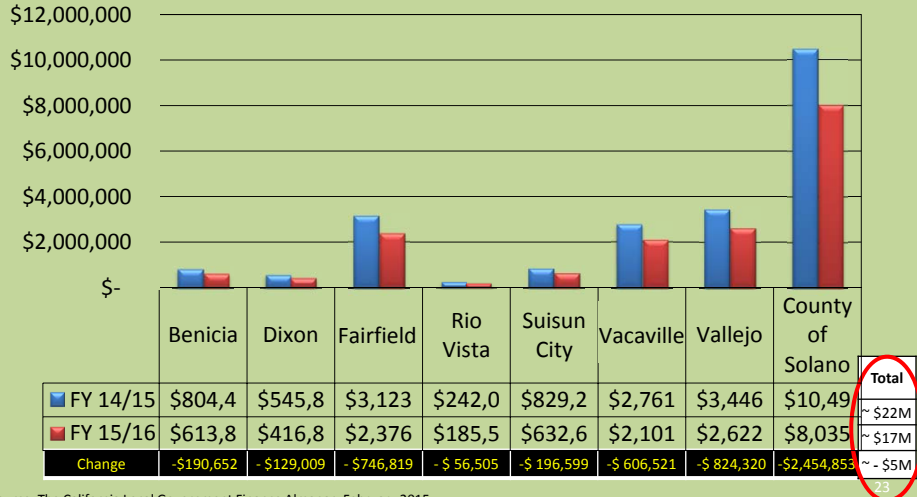
(Excise Tax vs. Price-Based Tax)

<u>State Base Excise Gas Tax</u>	<u>State Price-Base Gas Tax</u>
<ul style="list-style-type: none"> • Based on a fixed amount per gallon • 18 cents per gallon (Same since 1994) • Distribution: <ul style="list-style-type: none"> – State Highway Account– 64% – Cities and Counties - 36% <ul style="list-style-type: none"> • Limited Discretionary authority based on the following funding codes: <ul style="list-style-type: none"> – 2104, 2105, 2106, 2107 	<ul style="list-style-type: none"> • Adjusted annually based on price of a gallon of gasoline. • 18 cents per gallon in FY 2014-15 (~\$4/gallon) <ul style="list-style-type: none"> – Est. 12.5 cents per gallon in FY 2015-16 (~2.50/gallon) • Distribution: <ul style="list-style-type: none"> – State transportation debt service (Approximately \$1B annually) – Remainder to: <ul style="list-style-type: none"> • Local Streets & Roads – 44% <ul style="list-style-type: none"> – Half to Cities/Half to Counties • Surface Transportation Improvement Program (STIP) – 44% • State Highway Operation and Protection Program (SHOPP) – 12%



Estimated State Excise & Price-Based Gas Tax Solano County Revenues Comparison

FY 2014-15 (\$22.2M) vs. Estimated FY 15/16 Projections (\$17M)



Source: The California Local Government Finance Almanac, February 2015



Solano County Pothole Report



- Approved in October 2014.
- Based on FY 2013/14 funding levels Local Streets and Roads (LS&R) in Solano County have a \$24M annual shortfall to maintain PCI 60 through 2028
 - In FY 2013/14, \$20.5M was spent on roadway maintenance, less than half of \$44.5M per year needed to keep PCI at 60 through 2028.
 - \$50M more per year needed to achieve PCI at Countywide Transportation Plan Goal of 75 through 2028.

25

Solano County Pothole Report



- With FY 2013/14 levels of funding, roadways in Solano County will continue to degrade from its current average PCI of 65 to an average PCI of 49 by 2028.
- Projections of State Price-Based Gas Tax revenue show decrease of approx. \$5M in LS&R funding for Solano countywide from FY 2014/15 to FY 2015/16.

26




Funding for Transportation

We need the State to provide a more permanent revenue stream for transportation infrastructure in order for Solano County to continue to partner with Caltrans and the CTC to improve its transportation infrastructure along the I-80 and SR 12 corridors.

The loss or decrease of revenue from Federal, State & regional sources puts future Solano transportation projects and **JOBS** in *jeopardy*.

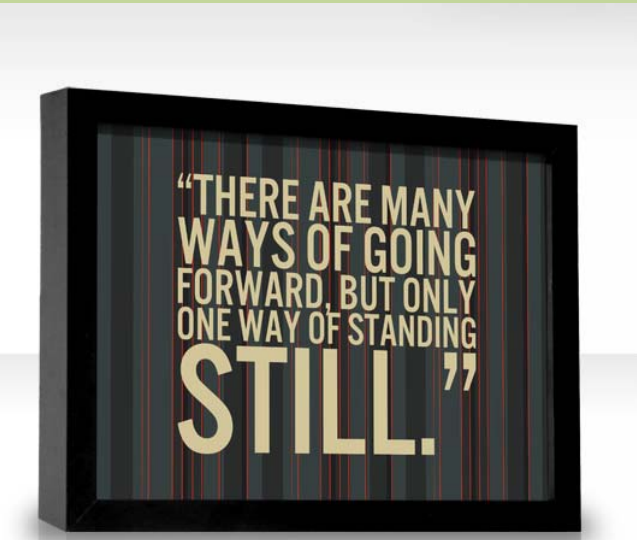
- The total number of workers employed on the projects delivered by a Caltrans-STA partnership as of July 2012, and are estimated to work on the current I-80/I-680 Interchange Complex project, are:

Project	Jobs funded by and working on the project	Combined Jobs*
SR 12 Jameson Canyon (Solano)	108	1,195
I-80 EB Truck Scales	150	1,362
I-80/I-680 Interchange Complex (estimates for upcoming project)	100	1,200
TOTAL	358	3,757

*The combined jobs (in the construction sector, in industries supporting the construction sector, and other related jobs in non-construction sectors) are based on the federal formula for job creation and the total cost of the projects.

27



Franklin Delano Roosevelt

28

Funding Being Discussed

Road User Charge is being explored.
Recommendation on pilot program due by
January 2018

Governor Jerry Brown at State of the State Address
1/22/15 –

- Californians have \$59 billion worth of maintenance to do in the coming years on the state's roads, freeways and bridges, 30 percent of which are not up to current-day standards.
- Something must be done.



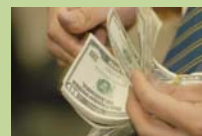
29

Funding Being Proposed

Assembly Speaker Toni Atkins:

“The Assembly is stepping up and proposing \$10 billion for transportation infrastructure—\$2 billion per year over the next 5 years—starting in 2015-16.”

The Assembly plans to develop a **comprehensive transportation funding package**, including: the repayment of vehicle weight fees; early repayment of outstanding transportation loans; and, the creation of a new Road User Charge as a fee on vehicle registrations in state (not to be confused with the mileage-based fee the Administration is working on).



30

Funding Being Proposed

Assemblyman Jim Frazier (Chair of Assembly Transportation Committee and Chair of new Select Committee on Improving Bay Area Transportation Systems):

ACA 4 – Lower Voter Threshold for Transportation Taxes

This bill would lower voter approval requirements from two-thirds to 55 percent for the imposition of special taxes used to provide funding for transportation purposes.



31

Funding Being Proposed

Senator Jim Beall (Chair of Transportation Committee and Chair of Select Committee on Improving Bay Area Transportation Systems):

SB 321- Stabilization of Gasoline Excise Tax

The gas tax swap replaced the state sales tax on gasoline with an excise tax that was set at a level to capture the revenue that would have been produced by the sales tax. The excise tax is required to be adjusted annually by the Board of Equalization (BOE) to ensure the excise tax and what would be produced by the sales tax remains revenue neutral. This bill would, for purposes of adjusting the state excise tax on gasoline, require the BOE to use a five-year average of the sales tax when calculating the adjustment to the excise tax.



Funding Being Proposed

Assembly Member Luis Alejo:

AB 227 – Vehicle Weight Fees

This bill would undo the statutory scheme that allows vehicles weight fees from being transferred to the general fund from the State Highway Account to pay debt-service on transportation bonds and would require the repayment of any outstanding loans from transportation funds by December 31, 2018. This bill would also extend the authorization of public-private partnerships beyond the current sunset date of 2017. This bill has been discussed in more detail by the author, the California State Association of Counties (CSAC) and the League of California Cities.



33

**“Opportunity
is missed by
most people
because it is
dressed in
overalls and
looks like
work.”**

Thomas A. Edison



Solano Transportation Authority

Daryl K. Halls, Executive Director
One Harbor Center, Suite 130
Suisun City CA 94585
707-424-6075
www.sta.ca.gov



Travis AFB Land Use Compatibility Plan Update



City-County Coordinating Council

Meeting

March 12, 2015



Travis AFB Land Use Compatibility Plan Update



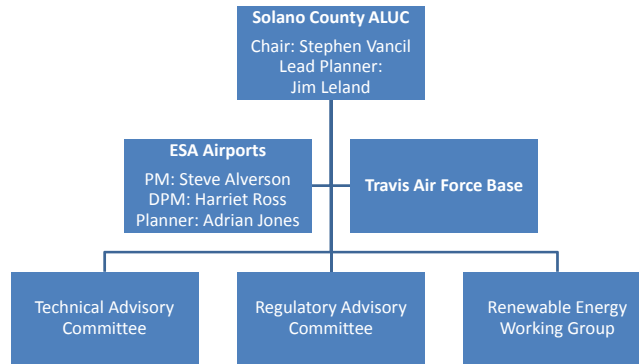
Presentation Overview

- Project team
- Purpose of the LUCP update
- Key issues for the LUCP update
- Compatibility Factors
- Overview of the update process and schedule
- Completed tasks
- Questions and comments

Travis AFB Land Use Compatibility Plan Update



The Project Team



Travis AFB Land Use Compatibility Plan Update



Purpose of the LUCP Update

- Address compatibility issues associated with the proliferation of renewable energy projects in Solano County and assault landing zone (ALZ) operations at Travis AFB
- Merge the countywide policies contained in the ALUC's Review Procedures document with the Travis AFB LUCP
- Update the current LUCP, as appropriate, pursuant to the standards set forth in Caltrans' 2011 California Airport Land Use Planning Handbook

Travis AFB Land Use Compatibility Plan Update



Key Issues for the ALUCP Update

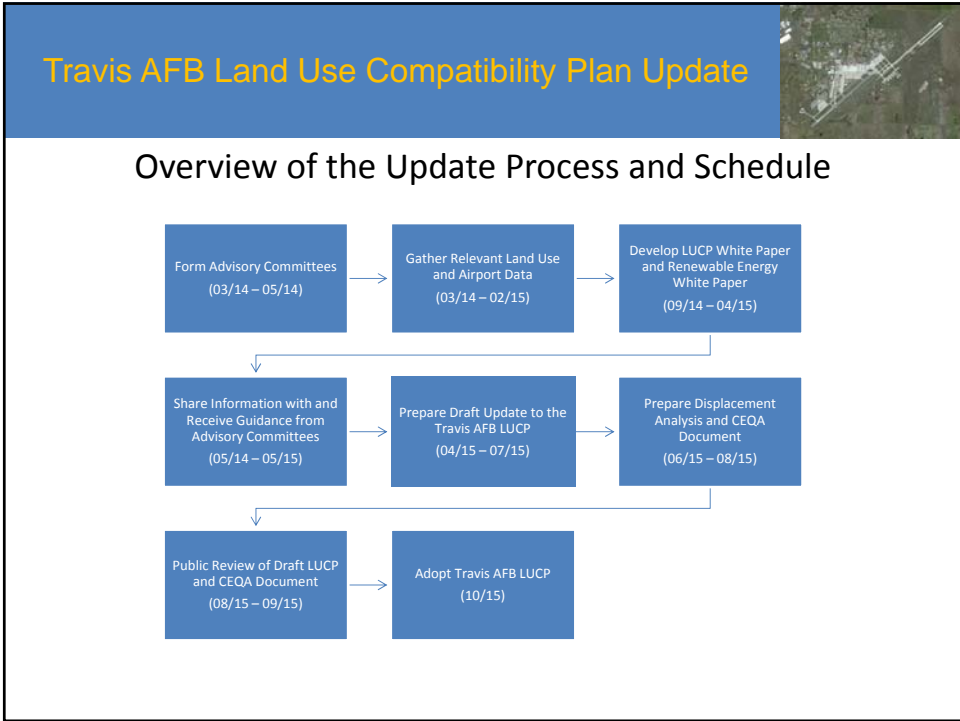
- Maintain a footprint that reflects Travis AFB's "maximum mission"
- Develop policies that address "non-conventional" land uses (e.g., renewable energy projects) radar interference is a new impact the plan is addressing
- Provide compatibility criteria tables that are easy for both the ALUC and affected jurisdictions to use
- Develop review procedures that account for special considerations associated with a military air base

Travis AFB Land Use Compatibility Plan Update



Compatibility Factors

- Noise
- Safety
- Airspace Protection
- Overflight



- ### Travis AFB Land Use Compatibility Plan Update
- #### Completed Tasks
- Collected existing conditions data
 - Prepared the aviation activity forecasts
 - Modeled the 2015 Existing and New Maximum Mission Noise Exposure Contours
 - Compared the New Maximum Mission Noise Contours to the 2002 Maximum Mission Contours

Travis AFB Land Use Compatibility Plan Update



Completed Tasks

- Developed Draft FAR Part 77 Surfaces Map
- Developed Draft Compatibility Zones
- Prepared Draft LUCP White Paper
- Prepared Draft Renewable Energy White Paper

Travis AFB Land Use Compatibility Plan Update



LUCP White Paper

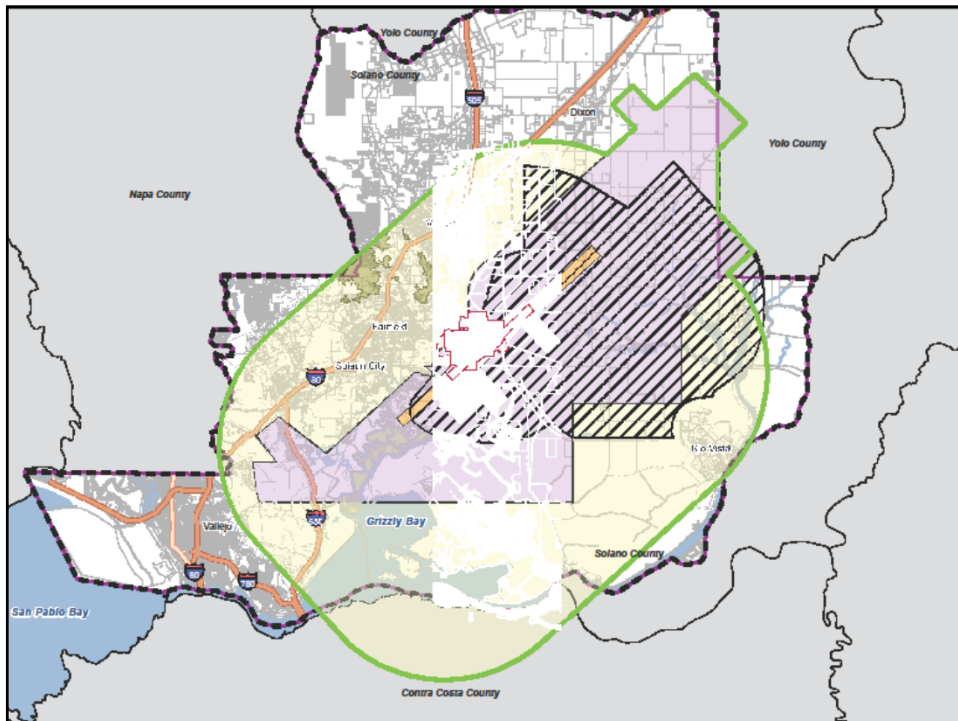
- Describes existing and planned facilities at Travis AFB
- Presents the existing operations, changes since 2002, and 2015 max mission aircraft operations data
- Depicts changes in AICUZ noise contours since the 1995 and 2009 studies
- Discusses changes in airport land use planning guidance since adoption of 2002 LUCP

Travis AFB Land Use Compatibility Plan Update



LUCP White Paper

- Compares policies from the 2002 LUCP and the 2011 California Airport Land Use Planning Handbook
- Provides a summary of the existing and planned land uses and zoning
- Discusses the potential conflicts between the updated LUCP and the planned land uses and zoning



Travis AFB Land Use Compatibility Plan Update



Renewable Energy White Paper

- Addresses Future of Renewable Energy (RE) Systems in Solano County
 - Wind turbine/radar interference (high concern) – nine recognized mitigation approaches
 - Solar glare and solar EMI impacts (low to medium concern) – recognized mitigation approaches
 - Other RE related hazards
- Provides recommendations on RE siting and planning concerns to be considered during LUCP update

Travis AFB Land Use Compatibility Plan Update



Thank you!

Questions and Comments





Solano County Airport Land Use Commission

Travis AFB Joint Land Use Study



Solano County Airport Land Use Commission

Travis AFB JLUS

❖ TRAVIS AFB NOMINATED FOR A JLUS

- ❑ 3rd JLUS for Travis AFB



Solano County Airport Land Use Commission

Travis AFB JLUS

❖ **THE JLUS**

- ❑ A **JLUS** is a **collaborative process** among federal, regional, and local governments and agencies; tribes; and the public.
- ❑ A **JLUS** balances **military operational demands** and **mission changes** with the region's and **local communities'** land use plans, economic development and infrastructure needs, and goals for environmental sustainability.



Solano County Airport Land Use Commission

Travis AFB JLUS

❖ **DEPARTMENT OF DEFENSE**

- ❑ **Office of Economic Adjustment Grant**
 - 90% Federal Funds
 - 10% Local Funds



Solano County Airport Land Use Commission

Travis AFB JLUS

❖ ISSUES

- Urban Issues
- Environmental Issues
- Spectrum Encroachment Issues



Solano County Airport Land Use Commission

Travis AFB JLUS

❖ URBAN ISSUES

- Enhancing anti-terrorism/force protection
- Future use for a former leaseback area
- Urban growth expansion toward Base



Solano County Airport Land Use Commission

Travis AFB JLUS

❖ **ENVIRONMENTAL ISSUES**

- ❑ Mitigation Banks and bird strikes



Solano County Airport Land Use Commission

Travis AFB JLUS

❖ **SPECTRUM ENCROACHMENT ISSUES**

- ❑ Radar interference from cellular communications



Solano County Airport Land Use Commission

Travis AFB JLUS

❖ **OUTCOME**

- ❑ Final report seeks **consensus** amongst participants on resolution of issues/conflicts and follow-up by local partners



Solano County Airport Land Use Commission

Travis AFB JLUS

❖ **STAKEHOLDERS**

- ❑ Cities and County
- ❑ Travis AFB
- ❑ US Fish and Wildlife



Solano County Airport Land Use Commission

Travis AFB JLUS

❖ **OUTREACH**

- Policy Committee (4 – C's)
- Technical Advisory Committee
- Spectrum Encroachment Working Group



Solano County Airport Land Use Commission

Travis AFB JLUS

❖ **SCHEDULE**

- April/May 2015 - July/August 2016

**SOLANO
City County Coordinating Council
Staff Report**

Meeting of. August 13, 2014

**Agency/Staff: Karen Lange and
Michael Pimentel with
Shaw, Yoder, Antwih Inc.**

Agenda Item No: V.2

Title /Subject: Legislative Update (Oral Update on the Legislature's two Extraordinary Sessions on Transportation and Healthcare)

Background:

At each CCCC meeting, staff provides a legislative update to keep members informed of activities at the State and Federal level.

Discussion:

CCCC staff and representatives from the County's legislative advocate firm, Shaw, Yoder, Antwih, Inc. will provide an oral update on the two extraordinary sessions on transportation and healthcare and legislative issues of concern to the County and the cities.

Recommendation: Receive an update of legislative matters of concern to the County and the cities.

**SOLANO
City County Coordinating Council
Staff Report**

Meeting of August 13, 2015

**Agency/Staff: Carolyn Wylie, Homebase and
Gerald R. Huber, Director, Health & Social
Services Department, Solano County**

Agenda Item No: V.3

Title /Subject: Update on Efforts to Address Regional Homelessness

Background:

Every two years, during the last 10 days of January, communities across the country conduct a comprehensive count of their homeless population in order to measure the prevalence of homelessness in each community. In January of 2015, Solano County and the seven cities, in conjunction with Applied Survey Research (ASR) and many volunteers conducted the 2015 Solano Homeless Point-in-Time Census survey from 6 a.m. to noon on January 30, 2015.

The Point-In-Time Census for Solano County identified 1,082 persons who were homeless at that time in Solano County, 27% (287) of who were sheltered and 73% (795) of who were unsheltered. This represents a decrease of 19% from the count in 2013, however, the count can be considered conservative, considering that, even with the most thorough methodology, many homeless individuals stay in hidden in difficult-to-enumerate locations. The Point-In-Time Census found 1,082 persons identified as homeless, of which 223 of are considered chronically homeless (i.e. have experienced homelessness for a year or longer or had experienced at least four episodes of homelessness in the last three years and have a condition that prevents them from maintaining work or housing).

The Point-In-Time Census indicates that one-third of survey respondents indicated they have psychiatric or emotional conditions, one-in-five revealed they suffer from Post-Traumatic Stress Disorder, and one-in-four (27%) reported chronic health problems. Additionally, 16% of the respondents reported a history of foster care, with 2% indicating they were in foster care prior to becoming homeless. The Point-In-Time Census reflects an intersect between the homeless population and the current Health and Social Services delivery system. Consequently, the Department has focused on addressing the current homeless issue within various sub-population groups of those we currently “touch” or should reach in order to provide assistance.

Discussion:

The Department currently provides a services and supports to address issues related to chronic homelessness in the county, and have formed collaborative efforts with cities to meet the needs of specific homeless sub-populations. Current and planned services include:

Behavioral Health

- For the homeless population dealing with issues of mental illness, the county has entered into a contract over the last year with Caminar HOME Program which provides outreach, engagement and brief treatment services to homeless individuals suffering from mental illness and works with each City PD/Homeless team as well as shelters to target individuals who require mental health services, shelter, etc. Capacity is likely to increase with additional funding this Fall.
- The County obtained a SAMSHA PATH grant (Projects for Assistance in Transition from Homelessness) for a homeless outreach worker: who will provide grant specific outreach, engagement and social work services to assist the homeless mentally ill veteran and non-veteran to obtain housing, stabilize psychiatrically and additional support services.
- The Behavioral Health Division of H&SS is currently adding a Homeless Services Clinical Liaison: This position will work closely with all parties to facilitate seamless linkage with existing mental health resources for identified mentally ill homeless individuals, provide follow-up to recently placed individuals at risk of falling back in to homelessness, and advocacy within the mental health continuum of care, including placement advocacy, court advocacy, SSI advocacy, and so on. This position will not be a direct provider of services, but will assure that individuals do not drop through the cracks and are well-served once introduced into our system.
- The Behavioral Health Division is also contracting with Bay Area Community Services (BACS) for a Respite Center: for individuals emerging from a mental health crisis that has rendered them homeless, the Respite Center will provide 1-5 days of supervised respite while the individual stabilizes and can be helped to find transitional housing, resume medication, etc.
- The Behavioral Health Division is also currently looking at having a certain number of reserved shelter beds at Mission Solano for the purpose of temporary housing following crisis stabilization or other interventions and the need for transitional housing and services until more permanent housing arrangements can be made.
- The Behavioral Health Division is contracting for 10 supported transitional shelter beds pending location of an appropriate facility.
- The Behavioral Health Division is finalizing a contract for transitional housing for consumers recovering from mental illness in Fairfield for individuals.

Public Health

From a Public Health perspective, the county's public health clinics have focused on prevention and early intervention to improve the health and wellness of the homeless community in Solano County.

- Specifically, Family Health Services (FHS) receives and administers a Healthcare for the Homeless grant from the Federal Government's Health Resources and Services Administration. In addition to providing funding for healthcare and dental services and medical treatment, this grant allows for monies to be allocated to outreach and enrollment efforts undertaken by FHS staff. Management team representation is involved with several advocacy and coordination workgroups and committees.
- FHS also employs a Health Assistant, whose primary focus is on reaching out to and assisting the homeless population with accessing primary healthcare and dental services. The Health Assistant spends a significant amount of time in the field visiting homeless encampments and shelters offering help to those who most need it, provides guidance and direction as to how, when, and where to complete applications for Medi-Cal and Medicare, and provides information regarding public transportation options to access care at the FHS sites in Fairfield, Vacaville, and Vallejo. Also, the Health Assistant attends many homeless advocacy and coordination meetings and often makes presentations for local community groups. Furthermore, he leads the FHS effort to support the North Bay Stand Down which serves homeless veterans in our community.
- FHS also operates two mobile clinics; a mobile medical van that provides primary care to individuals presenting in the field and a mobile dental van that allows for many dental procedures to be provided "on the spot" to homeless persons seeking dental treatment. These mobile clinics traverse the county providing services to residents unable to access our clinics including both Dixon and Rio Vista, cities wherein FHS does not have a physical presence.
- The Provider Health Plan (PHP) is looking at issuing out a grant this Fall on addressing the Social Determinants of Health, which largely correlates with issue of homelessness. The Health Plan realizes that the cost of health care is significantly enhanced by not addressing the issue of housing and other social factors that impact a person's health.
- The State of California's Department of Health Services is currently working with the Federal Center for Medicare and Medicaid Services (CMS) on their major Medicaid waiver program, which also addresses the Social Determinants of Health in what is called their Whole Person Care Initiative. Aspects of the correlation of housing and health care are part of this major Medicaid plan of the state submitted to CMS.

Social Services

Child Welfare Services

- For children coming out of foster care, the county currently contracts for First Place for Youth to assist youth into transitioning into adult life and responsibilities. The Department is also looking to assure a "soft handoff" to adult services for youth currently within the Child Welfare System who would benefit if adult services, mental health, substance abuse and other services were available to them. This includes youth coming out of the probation system.
- The Department is in the process of designing transition services for foster children up to age 25 years who are not ready to be independent. A social worker will provide continued oversight and support for this target population, arranging for independent living skills including money management and the pursuit of vocational or secondary education.

Older and Disabled Adult Services (ODAS)

- If the frail adults are eligible for Medi-Cal, they can receive In-Home Supportive Services at

the shelter, including support for ambulation and durable medical equipment.

- If the adult is at risk for self-neglect and abuse, the ODAS pays for emergency temporary shelter such as a one night stay in a motel room if there are no other alternatives.
- ODAS Adult Protective Services social workers focus on risk reduction by providing resources for food, clothing and shelter.

Employment & Eligibility (E&E)

E&E will focus efforts and program services in the following areas:

- E&E will develop a focused coordinated effort with community providers to increase opportunities to obtain health care coverage through Medi-Cal, through Cal-Fresh employment supports through CalWORKs, and SSI Advocacy for those who may qualify for Social Security.
- E&E will be submitting a grant proposal to the California Department of Social Services to assist homeless CalWORKs families to quickly obtain permanent housing and provide wrap-around case management and supports to facilitate greater housing retention success. Services will include housing location services, rental assistance, moving assistance, and other services to stabilize families in permanent housing.
- Current programs and benefits potentially available to homeless individuals or families including services for homeless individual with no income or property may potentially qualify for:
 1. General Assistance monthly cash grant (of \$350)
 2. CalFresh Monthly grant to assist with food purchase (of \$194)
 3. Medi-Cal health insurance
 4. Referrals to various local resources (shelters, food banks, community-based social service providers, etc.)
 5. A homeless family may potentially qualify for the following through the CalWORKs program:
 - CalWORKs Temporary Homeless Assistance (THA) payments.
 - CalWORKs Permanent Housing Assistance (PHA) for assistance with last month's rent, security deposits, or eviction prevention
 - CalWORKs Family Stabilization Program case management and resources for families with significant and/or multiple barriers to self-sufficiency. Since July 2014 to date approximately 80 families have been taken off the street or prevented from being evicted
 - CalFresh monthly grant to assist with food purchase
 - Medi-Cal health insurance
 - Welfare to Work Program resources to aid in job search and employment skills, including child care, transportation assistance, interview clothing
 - Referrals to various local resources (shelters, food resources, family resource centers)

- **Family Stabilization description**
Solano County Health and Social Services implemented the Family Stabilization Unit in July of 2014 with the goal of reducing barriers to self-sufficiency for families. Since July 2014 to date, approximately 80 families have been taken off the street or prevented from being evicted, by means of financial support, shelter search, or in facilitating some other housing arrangement with a family or friend. This includes rental assistance, security deposits, utility payments, moving cost assistance, and hotel assistance.

- **HUD Permanent Supportive Housing Grant (PSH) description**
Solano County Health & Social Services was 1 of 25 in the nation awarded a 2015 HUD Permanent Supportive Housing Grant in the amount of \$151, 323. This grant will fund unlimited tenant-based rental assistance to assist chronically homeless families to remain stably housed. At least one adult will have been continuously homeless for a year or more or had at least four episodes of homelessness in the past 3 years and has a diagnosable disability. Assistance with security deposits, moving costs, and utility deposits will be provided and will assist an anticipated total of 36 persons who are Solano CalWORKs families. Projected date of implementation of this program is early Fall 2015.

- **Current Outreach efforts**
 1. Annual North Bay Stand down for veterans. EE participates and takes applications at North Bay Stand Down which is an outreach resource fair focused on Veterans including homeless veterans.

 2. Outstation locations

 3. Jail applications

- **Opportunities being pursued**
 1. **CalWORKs Housing Support Program (HSP)**
Currently Solano County Health & Social Services is pursuing new opportunities such as funding via the State's CalWORKs Housing Support Program (HSP) which to date has helped 1300 families move into permanent housing. If awarded CalWORKs HSP funding Solano County Health & Social Services hopes to use funding for CalWORKs and/or WTW clients who are eligible for Family Stabilization Temporary Housing Assistance/Permanent Housing Assistance (THA/PHA). The clients are assessed for Family Stabilization eligibility through several criteria which includes chronically homeless, homeless, imminent risk of homelessness, or pre or post eviction. CalWORKs HSP would fund core services in the areas of housing identification, move-in and rental assistance, and case management, with the goal of reducing the length of time families experience homelessness and move towards greater stability to remain permanently housed.

 2. **SSI Advocacy Program**
HSS is exploring reinstating an SSI advocacy program which would work with and aid those eligible to SSI benefits due to disability in filing successful claims. According to 2015 Point-In-Time Census report, 46% suffer from drug or alcohol abuse; 32% from psychiatric or emotional conditions; 23% from Physical Disability; 20% from Post-Traumatic Stress Disorder (PTSD); 27% from chronic health problems; 10% from traumatic brain injury. These mental and physical disabilities ultimately contribute to the individuals' inability to consistently maintain self-sufficiency including housing and employment. The purpose of the SSI advocacy program would be to aid the individual

in the process of filing successful SSI claims including coordination of necessary medical and mental health care and assessments.

H&SS Administration

Two Community Services Coordinator positions were added to facilitate a comprehensive coordinated service approach across H&SS divisions, with other county departments, with each of the cities, and providers to addressing the issue of homelessness. Administration has held numerous planning meetings with the cities of Fairfield, Vallejo, and Vacaville as a follow up to the Point-In-Time Census to assist in education and development of Department support services for addressing homelessness. Activities in development currently include:

- County-wide Services – Single Homeless Adults Rapid Rehousing Project
- County-wide Services – Single Homeless Adults Employment & Training Project
- County-wide Services – Coordination of services to transition homeless CalWORKs families in temporary shelter at Mission Solano to permanent housing with rental assistance and supportive services
- City of Fairfield - Coordination of services with Mission Solano to expand Bridges to Life service components for the most nomadic homeless population
- City of Fairfield – Coordination with Department of Public Works FAST Transit operation to identify enhanced transportation for homeless families in temporary shelter at Mission Solano who are participating in the Welfare-to-Work job search and employment first activities
- City of Vallejo – Coordination of Participatory Budgeting Project for Homeless Services
- Research and investigation of other successful homeless program models in other counties and states, identifying funding opportunities for development and implementation for housing and employment services
- Establishing homeless services baseline for H&SS, service gaps, and identifying H&SS service expansion needs for homeless services

Need for Housing Options for the Homeless

The CAP Solano JPA, the Continuum of Care and the Housing First Board will utilize the Homeless Point-In-Time Census for the 2016-2017 Community Action Plan which serves as a 2 year roadmap demonstrating how Community Services Block Grant (CSBG) eligible entities plan to deliver CSBG services. The Point-In-Time Census will also help facilitate the planning process for the Housing and Urban Development (HUD) strategic plan.

The primary services identified by focus groups, community forums, interviews, and surveys was the need for additional permanent supportive housing and rapid re-housing to serve people who are chronically homeless and transitional housing to serve key populations, such as domestic violence survivors and transitional age youth. According to the January 2015 Housing Inventory Count performed by HomeBase, the unmet need in Solano County is 711 year-round permanent supportive housing beds, including 638 beds for adult-only households and 71 beds for families with children, as well as 3 transitional housing beds. Permanent housing requires rental assistance, security deposit, utilities assistance, as well as housing search assistance because of the extremely low vacancy in the rental market and the stigma toward housing homeless persons.

Recommendation:

Receive an update on efforts to address regional homelessness.

Attachments:

A - Presentation - Homebase Point-In Time Count

CITY COUNTY COORDINATING COUNCIL PRESENTATION



Presented by HomeBase, August, 2015

2016-2017 Needs Assessment and Community Action Plan

- Provides **key demographic information**
- **2 Year roadmap** for how the **Community Services Block Grant (CSBG)** funds will be allocated and services will be delivered
- Identifies & assesses **poverty-related needs and resources** in the community
- Establishes **goals, & priorities** for delivering services to individuals & families **most-affected by poverty**



Primary Causes of Poverty in Solano County



1. High cost of housing & Lack of available housing (Rental vacancy rate 6.8%)
2. Lack of employment opportunities
3. Lack of education & training for jobs
4. Mental health & other health concerns

Primary Barriers To Overcoming Poverty in Solano County



1. Lack of affordable housing
2. Homelessness
3. Inadequate transportation
4. Lack of childcare / afterschool programs
5. Mental health & substance abuse issues
6. Lack of awareness of resources
7. Poor credit / rental / work history and/or criminal record

JPA Prioritized Community Needs

Need Area	Services
Rental Assistance, Security Deposit	Rental assistance, security deposit, utilities, etc.
Housing Search Assistance	Housing counseling, navigation, landlord outreach, credit repair, transportation services
Supportive Services for Housing	Case management, mental health services, life skills classes, transportation, childcare, food, financial literacy
Employment Search Assistance	Interviewing skills, job search, resume writing, counseling/coaching), post-incarceration reentry assistance, transportation services
Job Training & Education	Job training, counseling/coaching, computer classes, GED classes, adult education, adult literacy, adult language classes

SOLANO COUNTY



POINT-IN-TIME CENSUS & SURVEY COMPREHENSIVE REPORT 2015

REPORT PRODUCED BY ASR

HomeBase, Advancing Solutions to Homelessness

Point-in-Time Definitions of Homelessness

- Sheltered:
An individual or family living in a supervised public or privately operated shelter designed to provide temporary living arrangements (emergency shelters, transitional housing, and hotels or motels paid for by charitable organizations or government entities).
- Unsheltered:
An individual or family with a nighttime residence that is a public or private place not designated for or ordinarily used as a regular sleeping accommodation for human beings, including a car, park, abandoned building, bus or train station, airport, or camping ground.
- Excluded persons:
“Doubled-up”, non-HIC shelters, private property, unsafe areas

Methodology

- **Census**
 - General observation-only street count
 - Shelter Count – only HIC registered shelters & coordinated with HomeBase
- **Survey**
 - Quota Sample (n=360) – Geographic/shelter status
 - Shelter staff and peer administered
- **Analysis and Reporting**
 - Census data empirical
 - Sub-population data derived from survey sample
 - Federal reporting standards

Results –2015

HOMELESS CENSUS POPULATION BY JURISDICTION

JURISDICTION	UNSHELTERED n	SHELTERED n	TOTAL n	%
Total Incorporated	684	287	971	90%
Benicia	36	4	40	4%
Dixon	11	12	23	2%
Fairfield	166	178	344	32%
Rio Vista	19	0	19	2%
Suisun City	13	8	21	2%
Vacaville	79	43	122	11%
Vallejo	360	42	402	37%
Total Unincorporated	111	0	111	10%
Total	795	287	1,082	100%

Source: Applied Survey Research. (2015). Solano County Homeless Census. Watsonville, CA.

Note: Changes in the shelter count may reflect changes in shelter designations and listed shelters rather than capacity or usage.

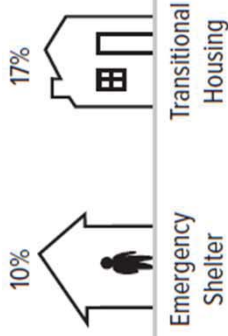
Results –2015

TOTAL NUMBER OF HOMELESS INDIVIDUALS ENUMERATED DURING THE POINT-IN-TIME HOMELESS CENSUS

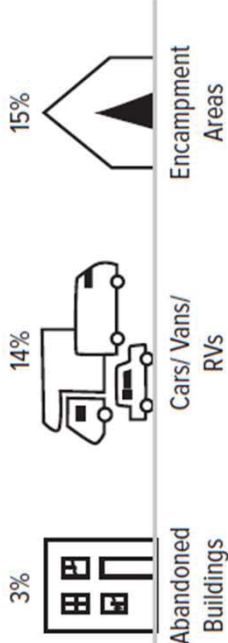
TOTAL HOMELESS POPULATION: 1,082 INDIVIDUALS



Sheltered includes:



Unsheltered includes:



Source: Applied Survey Research. (2015). Solano County Homeless Census. Watsonville, CA.

Survey Sample

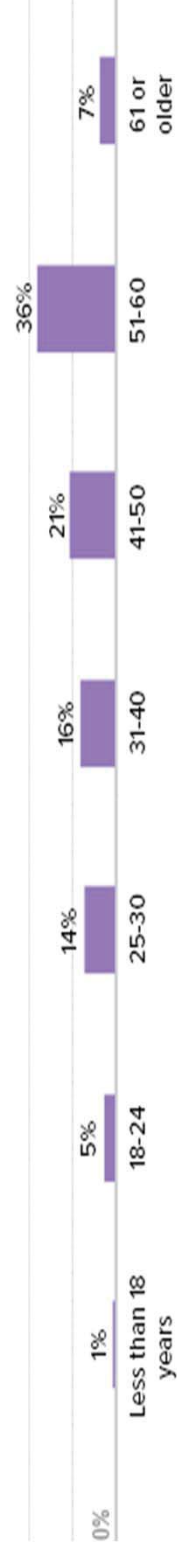
SURVEY DISTRIBUTION BY GEOGRAPHY AND SHELTER STATUS

JURISDICTION	UNSHelterED n	SHelterED n	TOTAL n	%
Dixon	0	3	3	1%
Fairfield	138	41	179	50%
Rio Vista	11	0	11	3%
Vacaville	30	4	34	9%
Vallejo/Benicia/ Suisun City	106	27	133	37%
Total	285	75	360	100%

Source: Applied Survey Research. (2015). Solano County Homeless Census and Survey. Watsonville, CA.

AGE

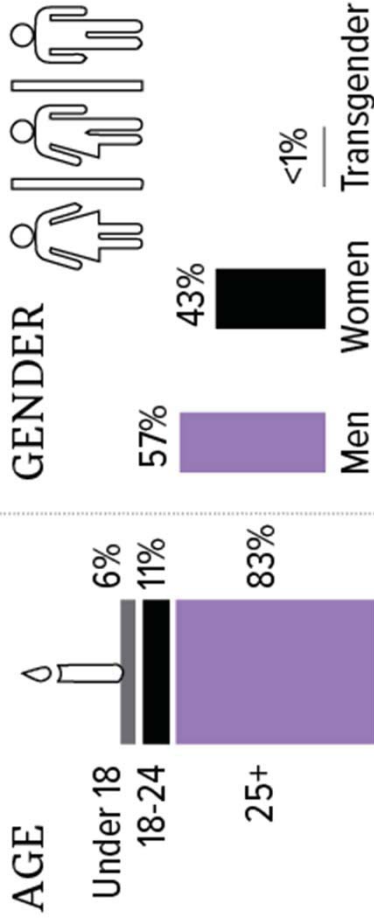
100%



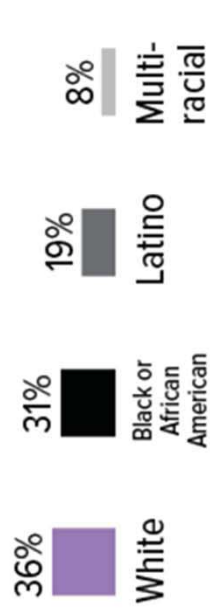
2015 n:360

Source: Applied Survey Research. (2015). Solano County Homeless Survey. Watsonville, CA.

Survey Sample Findings



RACE/ETHNICITY (TOP 4 RESPONSES)



2015 n:360



Survey Sample Findings

FIRST TIME HOMELESSNESS

Yes (46%)
No (54%)



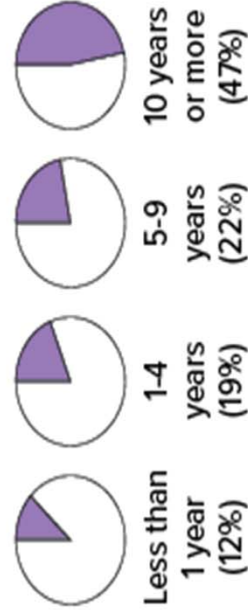
31%
of those experiencing homelessness for the first time had been homeless for one year or more



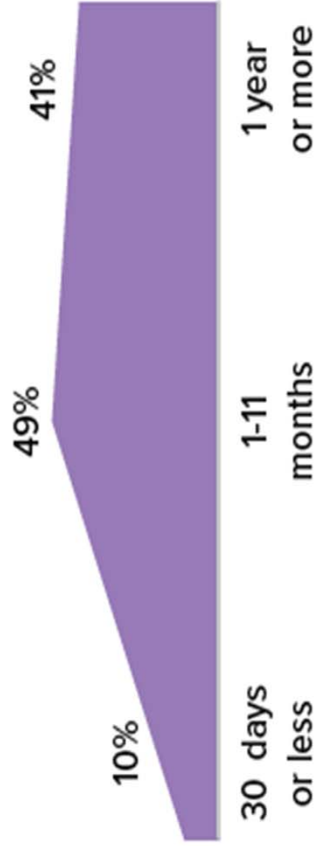
RESIDENCE AT TIME OF HOMELESSNESS



LENGTH OF TIME IN SOLANO (of those living in Solano County at time of homelessness)

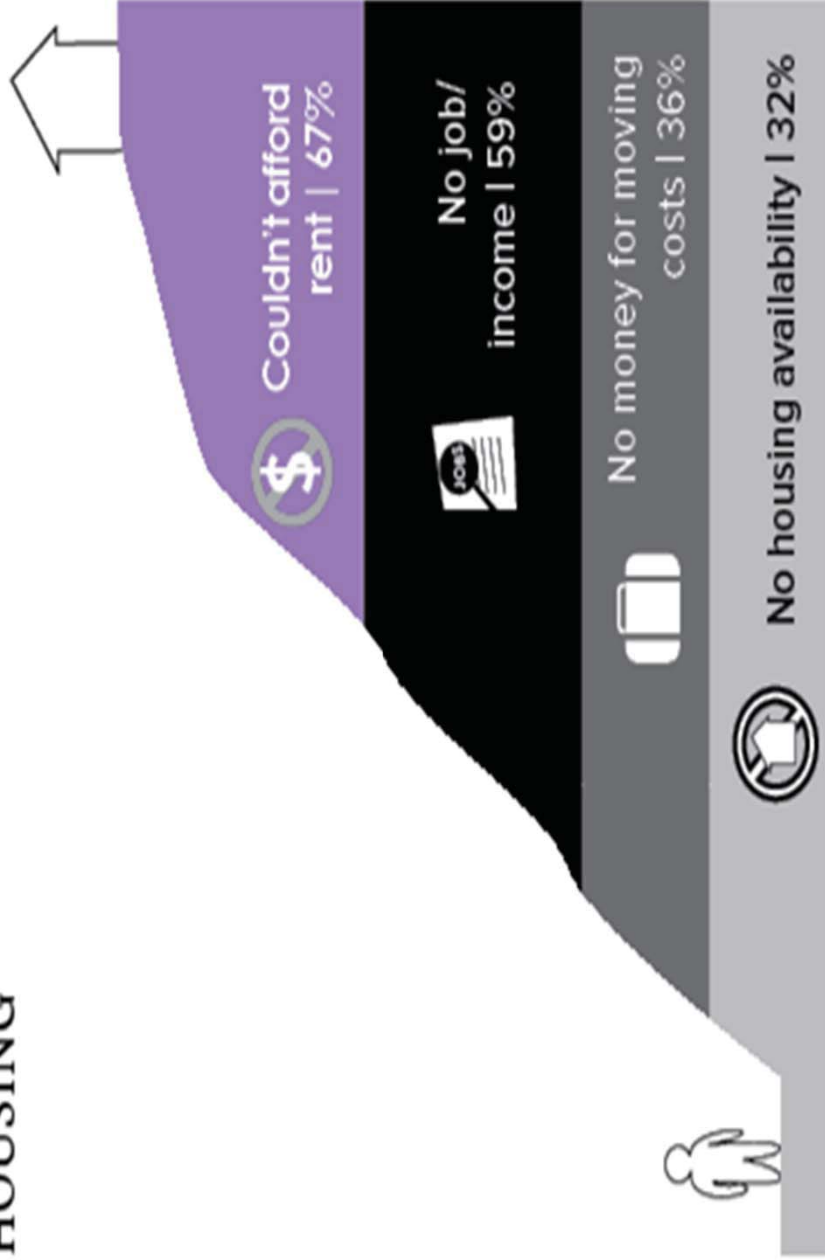


DURATION OF HOMELESSNESS



Survey Sample Findings

OBSTACLES TO OBTAINING PERMANENT HOUSING



Survey Sample Findings



What is a health condition?








A health condition is defined here as a physical disability, mental illness, chronic depression, alcohol or drug abuse, chronic health problems, HIV/AIDS, Post-traumatic Stress Disorder (PTSD), or a developmental disability.



42% of survey respondents reported a health condition.

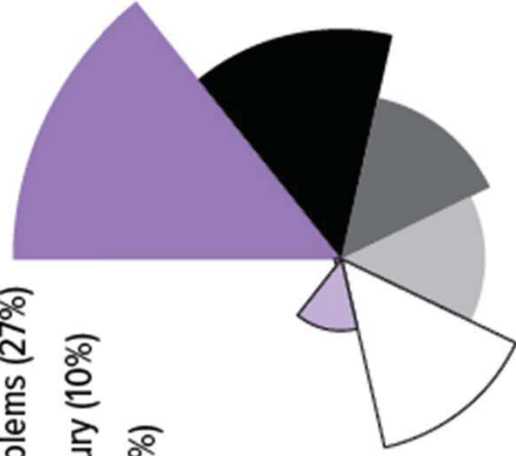


HEALTH CONDITIONS

-  Drug or alcohol abuse (46%)
-  Psychiatric or emotional conditions (32%)
-  Physical disability (23%)
-  Post-Traumatic Stress Disorder (PTSD) (20%)
-  Chronic health problems (27%)
-  Traumatic brain injury (10%)
-  AIDS/HIV related (1%)



Note: Multiple response question, numbers will not total to 100%.



Survey Findings – Subpopulation Data



CHRONICALLY HOMELESS



223 Individuals



VETERANS



140 Individuals



FAMILIES



38 Families with 114 members



UNACCOMPANIED CHILDREN



9 Individuals



TRANSITION-AGE YOUTH



111 Individuals



2015 Unmet Need

- The Unmet Need analysis utilizes PIT and HIC Data to estimate the unmet housing need in the Community. This is an estimate requested by HUD each year, not an exact calculation.
- **KEY 2015 FINDINGS:**
 - Solano County needs approximately 700 additional Permanent Housing Beds, which includes Permanent Supportive Housing and Rapid Rehousing.
 - The majority are for adult-only households
 - A smaller proportion for families with children



**SOLANO
City County Coordinating Council
Staff Report**

Meeting of: August 13, 2015

**Agency/Staff: Jim Leland, Principal Planner,
County of Solano**

Agenda Item No: V.4

Title /Subject: Receive a presentation from ESA on progress to date in preparing an update on the Travis Air Force Base Land Use Compatibility Plan.

Background:

The Solano County Airport Land Use Commission (ALUC) is a special purpose agency responsible for establishing Land Use Compatibility Plans for each public and military airport in Solano County. California law requires counties which contain military or public airports to establish airport land use commissions to provide for the orderly expansion of airports. This is primarily accomplished with the adoption of land use compatibility plans for individual airports. At the request of the ALUC, the CCCC's has agreed to assume the role of a Policy Committee and to provide feedback on the development of the Plan.

Discussion: The Airport Land Use Commission made a presentation to the 4-C's in May on May 14, 2015. At that time, several concerns were expressed regarding the scope of the plan update.

Staff from the ALUC met with the City Manager's from each city to review the update and several proposed adjustments to the plan. Staff believes that the issues expressed at the May 4-C's meeting were successfully resolved. ESA will be making a presentation on the current status of the update program, including the revisions made since the last appearance before the 4-C's. In addition, ESA will be updating their schedule for the expected completion of the study.

Recommendation: Receive a presentation on preparing an update on the Travis Air Force Base Land Use Compatibility Plan.

Attachment:

The revised DRAFT Travis AFB Land Use Compatibility Plan is available for download at:

Draft Travis Plan: <https://admin.solanocounty.com:4433/civicax/filebank/blobdload.aspx?blobid=20782>

Appendices: <https://admin.solanocounty.com:4433/civicax/filebank/blobdload.aspx?blobid=20784>

Attachments:

Presentation Slides



City-County Coordinating Council

Meeting #4

August 13, 2015





Presentation Overview

- Review Draft Travis AFB LUCP Policy Changes
- Review Schedule
- Questions and Comments



Travis AFB LUCP Policy Changes

- Updated Compatibility Zone Boundaries
- New safety standards and criteria for:
 - Wind turbine facilities
 - Solar facilities
 - Meteorological towers
 - Objects greater than 100'
 - Wildlife hazards



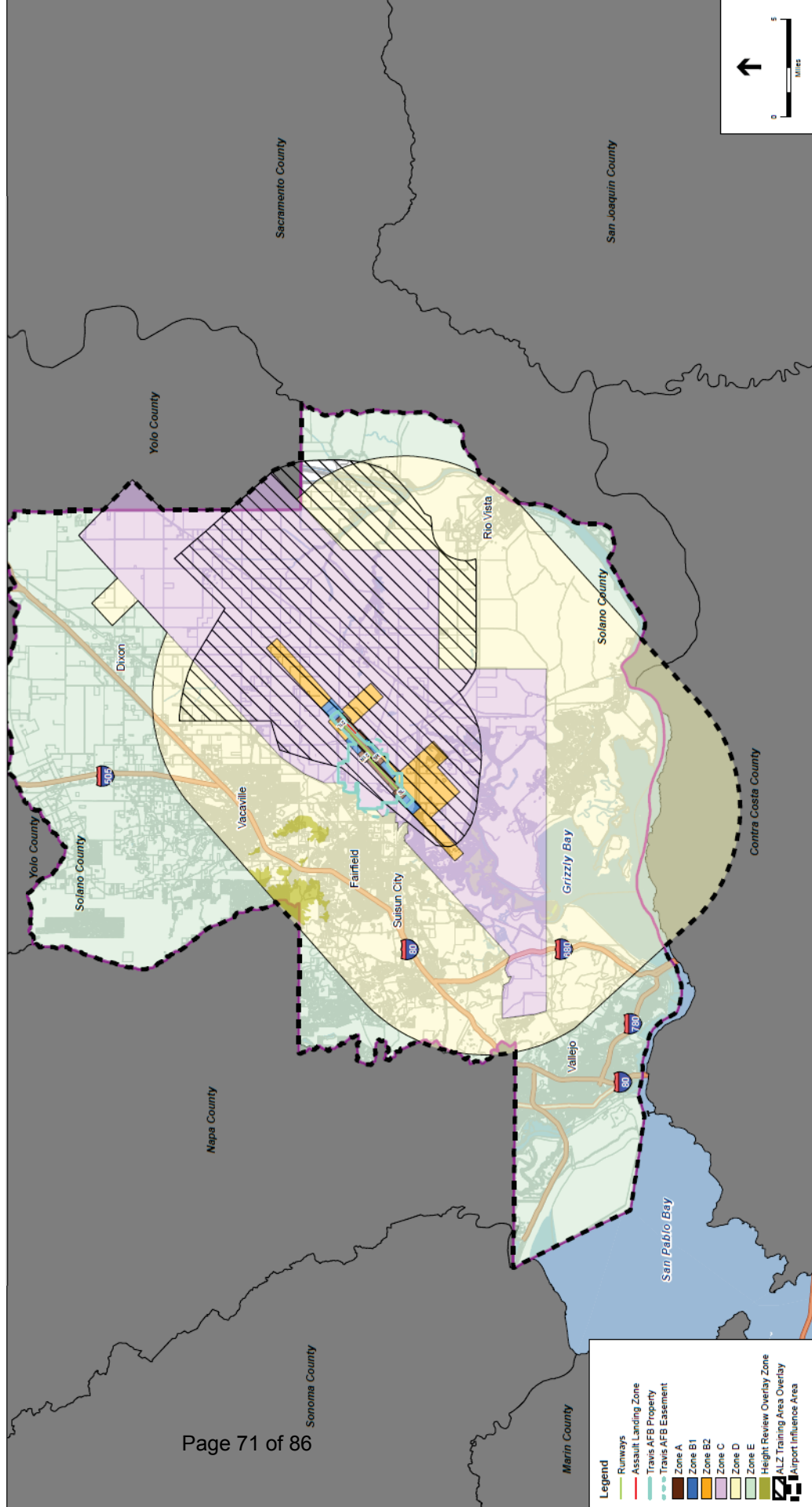
Travis AFB LUCP Policy Changes

- Compatibility Zone Boundaries
 - Zones A, B1, B2, and C are the same as in the 2002 ALUCP
 - Zone D expanded to cover flight tracks not previously included in the 2002 ALUCP
 - Zone E covers the remainder of Solano County not within the other compatibility zones

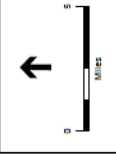
Travis AFB Land Use Compatibility Plan Update



New Compatibility Zone Boundaries



- Legend**
- Runways
 - Assault Landing Zone
 - Travis AFB Property
 - Travis AFB Easement
 - Zone A
 - Zone B1
 - Zone B2
 - Zone C
 - Zone D
 - Zone E
 - Height Review Overlay Zone
 - ALZ Training Area Overlay
 - Airport Influence Area



Wind Turbine Facilities

- No restrictions on commercial or non-commercial facilities 100' or less
- New facilities greater than 100':
 - Prohibited within radar Line-of-Sight (LOS)
 - Individual radar LOS analysis required
 - ALUC review required
- Existing and future constructed facilities can be replaced without ALUC review as long as height and reflectivity are not increased

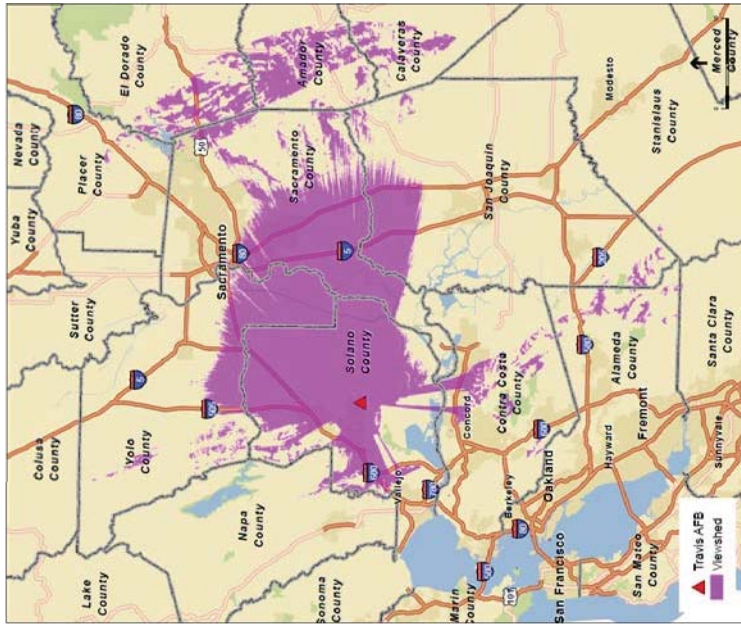


Photo Credit: CleanTechnica

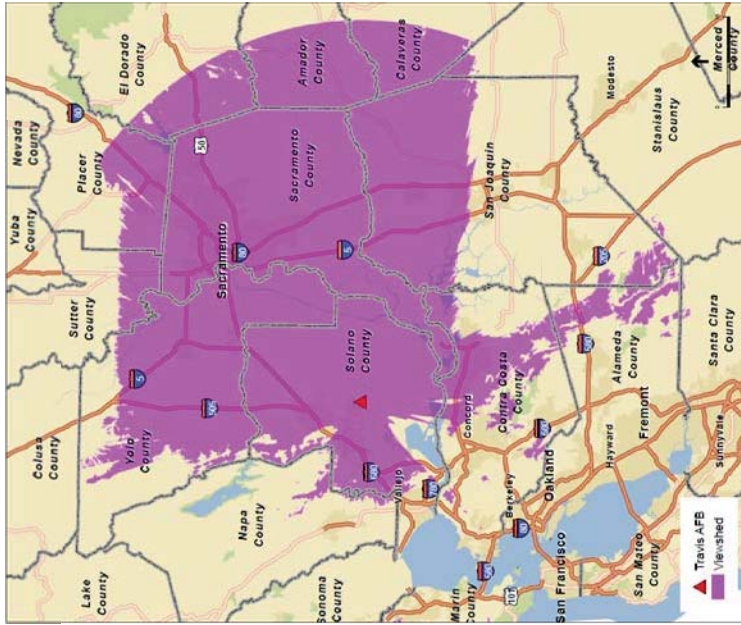
Travis AFB Land Use Compatibility Plan Update



DASR Line-of-Sight Viewshed



- Shaded areas are in LOS viewshed for 100'
- No turbines > 100' in LOS



- Shaded areas are in LOS viewshed for 500'
- No turbines > 500' in LOS



Solar Facilities

- New or expanded commercial-scale solar facilities
 - ALUC review required
 - Glint and glare study must prove no glint or glare risk
 - SGHAT model must be used

- FAA may issue further guidance or policies in the future



Photo Credit: ESA, 2009.

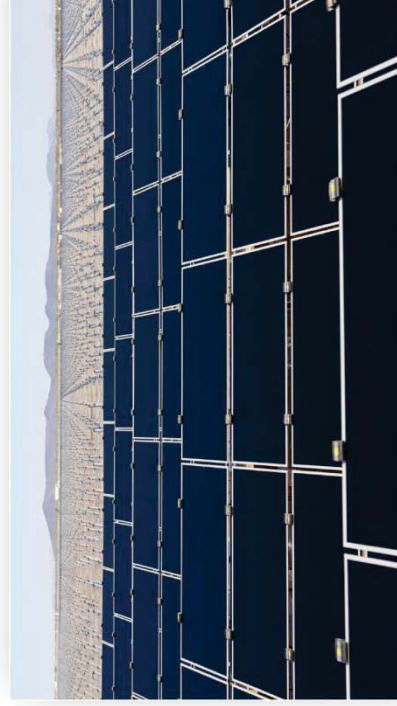


Photo Credit: ESA, 2009.



Meteorological Towers

- New or expanded towers
 - ALUC review if greater than 100' in Zone C, or greater than 200' in Zones D and E
- New and expanded towers subject to compatibility zone height standards
- Lighting and marking to be in accordance with FAA Advisory Circular AC-70/7460-1K

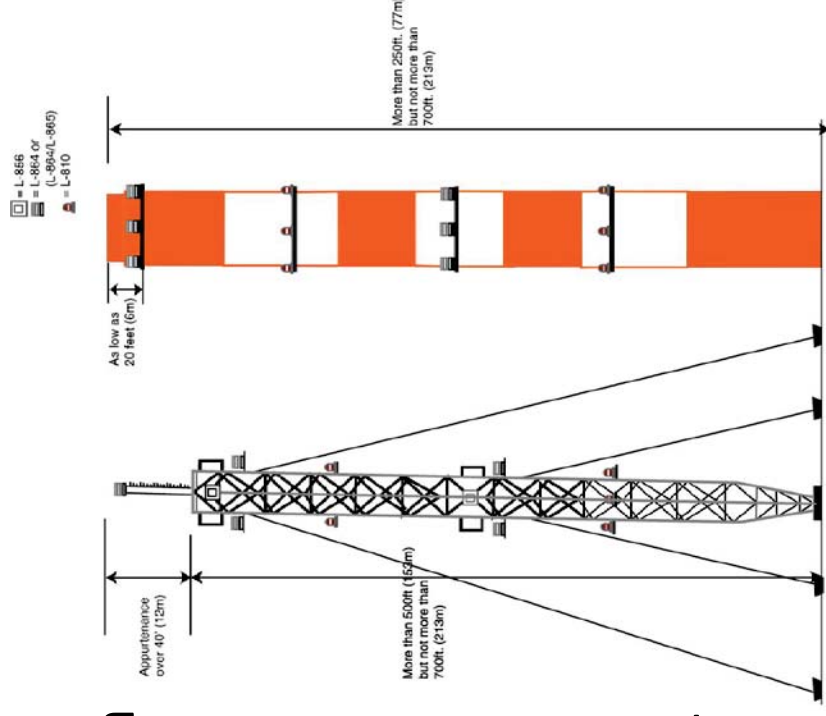


Photo Credit: FAA, 2007. Advisory Circular AC70/7460-1K. 2/1/2007.



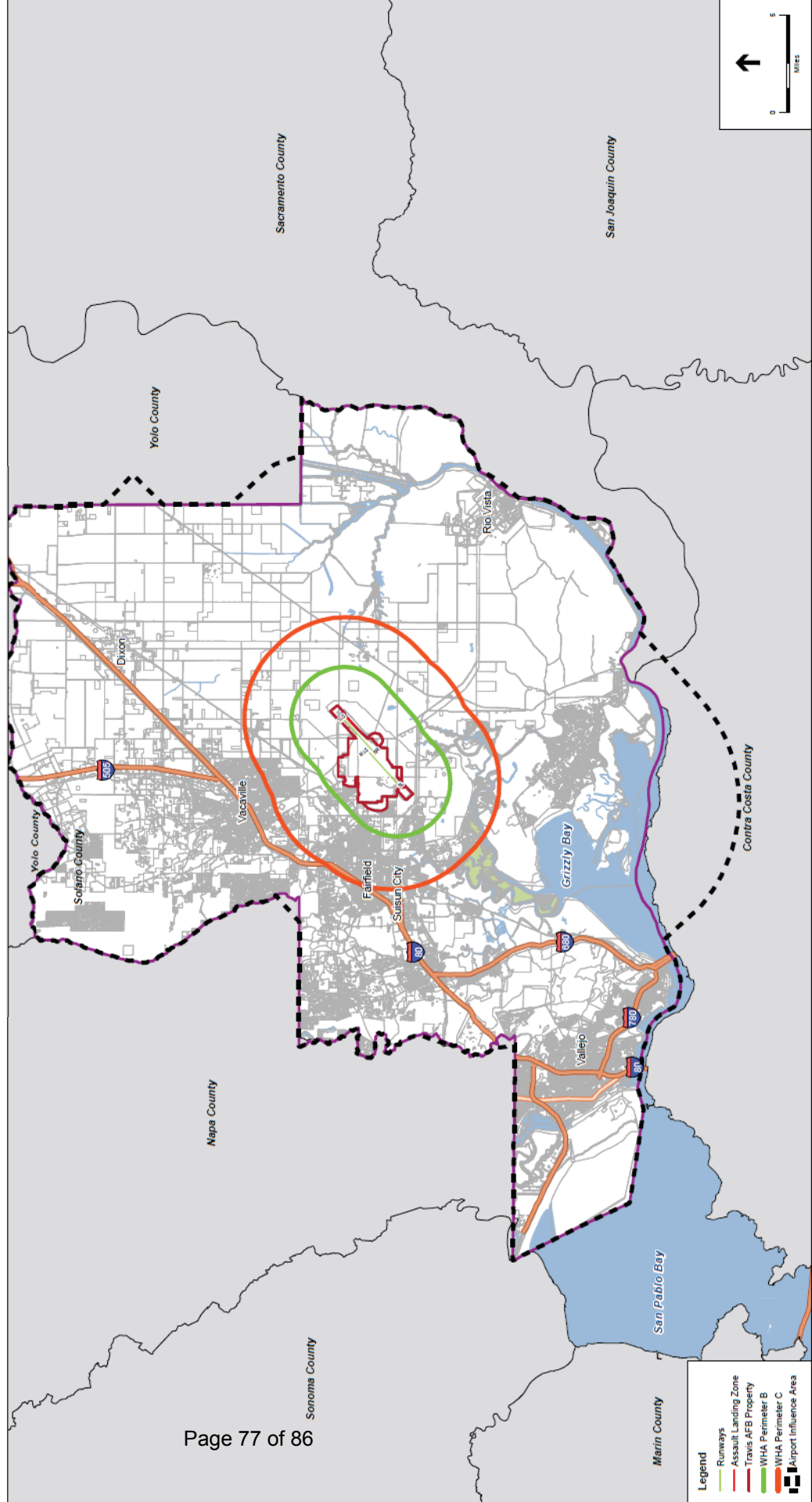
Wildlife Hazards

- Perimeter B
 - 14,500' from runways to minimize bird strike hazard
 - No new or expanded land use that attracts hazardous wildlife
 - Requires ALUC review
- Outside of Perimeter B but within Perimeter C
 - Perimeter C is five miles from the Airport Operations Area
 - No new or expanded land use that causes hazardous wildlife movement
- All discretionary projects in Perimeters B and C must consider hazardous wildlife attraction or movement potential

Travis AFB Land Use Compatibility Plan Update



Wildlife Hazards



- Legend**
- Runways
 - Assault Landing Zone
 - Travis AFB Property
 - WHA Perimeter B
 - WHA Perimeter C
 - Airport Influence Area



Other Objects > 100'

- ALUC Review required for
 - Zone C: Objects greater than 100'
 - Zones D and E: Objects greater than 200'
- Lighting and marking to be in accordance with FAA Advisory Circular AC-70/7460-1K and FAA study for particular structure



Next Steps/Schedule

- Working on Displacement Analysis now
- Potential CEQA review in August/September
- ALUC Working Session on Tuesday, August 25th



Questions and Comments



Travis AFB Land Use Compatibility Plan Update



Thank you!



**SOLANO
City County Coordinating Council
Staff Report**

Meeting of: August 13, 2015

**Agency/Staff: Jim Leland, Principal Planner,
County of Solano**

Agenda Item No: V.5

Title /Subject: Receive a presentation on the proposed Joint Land Use Study for Travis AFB.

Background: Travis AFB was nominated for a Joint Land Use Study (JLUS), funded by the Department of Defense, Office of Economic Adjustment. A JLUS is conducted in partnership with local governmental agencies and other stakeholders in order to:

- Plan compatible civilian uses around local military facilities and to carry out efforts to ensure compatible use,
- Engage the private sector to support compatible use, and
- Partner with the Military Departments as they seek compatible civilian activities consistent with their local missions

The County of Solano was identified as the local partner to sponsor the JLUS.

Discussion: The Office of Economic Adjustment, in conjunction with Travis AFB Leadership, identified the following goals for the study:

- Spectrum Encroachment Issues
 - There is a need to review shared spectrum requirements to ascertain whether or not there is any digital surface radar interference that may be experienced between wireless cell phone towers and microwave communications.
- Urban Issues
 - Enhancing anti-terrorism/force protection near the base entry;
 - Future use for a former leaseback area near the northeast corner of base.
 - Economic pressures to expand urban growth toward the Base.
- Environmental Issues
 - Mitigation Banks, which could generate additional bird activity and the threat of bird strikes.

The JLUS study will address issues with the potential to impact the Base that would not customarily be addressed by the Airport Land Use Commission in its update to the Travis AFB Land Use Compatibility Plan.

The County is serving in the role as local partner to the OEA and has been awarded a grant to conduct his study. Earlier this year, County staff met with our counterparts in Fairfield, Suisun City and Vacaville to review the scope of work for the JLUS. Needed adjustments were identified and incorporated into the final RFP. We are currently circulating the RFP in order to obtain consulting services to assist with this effort. We expect to have a consultant on board by October of this year.

Recommendation: Receive a presentation on the proposed JLUS for Travis AFB.

**SOLANO
City County Coordinating Council
Staff Report**

Meeting of: August 13, 2015

Agency/Staff: Birgitta Corsello, CAO, Solano County, Sandy Person, President, Solano Economic Development Corporation, and Sean Quinn, Project Manager

Agenda Item No: V.6

Title /Subject:

Receive a presentation on the Moving Solano Forward Grant and IDEA Project

Background:

Solano County received a Department of Defense Office of Economic Adjustment (OEA) grant in January 2013 to conduct an Economic Diversification Study Project (EDS) due to the community economic impact of Travis Air Force Base. This project determined the county's economy is less diversified than the rest of the Bay Area and the State of California, but similar to the neighboring Sacramento region. Four clusters emerged that could assist the county in diversifying away from a government-dominated economy: Energy, Food Chain, Medical and Life Sciences, and Advanced Materials.

The resulting EDS, dubbed Moving SOLANO Forward (MSF), identified 13 strategies and 39 implementation actions for local jurisdictions to pursue over the next five years to achieve the stated goals of 1) Enhancing countywide development capacity, 2) Strengthening regional economic development and workforce development programs and services, and 3) Improving the quality of life for county residents and businesses.

The MSF Strategy identified lead agencies and key community partners that will be responsible for shepherding the various implementation actions to fruition. These goals, strategies and implementation actions build upon each other to create a comprehensive strategy for diversifying the economic base serving Solano County.

Discussion:

The County seeks to further develop some of the foundational implementation actions of the EDS by pursuing a five-pronged approach of interdependent efforts called the MSF Implementation of Diversifying Economic Actions (IDEA) Project which will result in:

- A corridor and development study that identifies strategies to re-envision the form and function of key county transportation corridors;
- A cluster analysis that classifies the needs and gaps of the identified clusters;
- recommendations on the best positioned sites for development and further economic diversification;

- A comprehensive data base of economic information and a web-based application to access and share the data; and
- A report on local, state and federal funding opportunities for economic development investments and recommendations for an organizational structure and potential funding mechanisms to establish and sustain a local funding option to support proposed investments.

On July 27, 2015, Solano County submitted an application for a grant from the OEA for the MSF IDEA Project. The MSF IDEA Project is Phase 2 of a process that will further develop the economic diversification strategies identified in the EDS. A primary goal of the IDEA Project is to create a comprehensive strategy for diversifying the economic base serving Solano County. To achieve all of the Project's goals, the County entered into an MOU with Solano Economic Development Corporation (EDC) to provide economic development services that will assist with the implementation of the grant, augment staff resources and capitalize on Solano EDC's economic development expertise and comprehensive community engagement network.

Solano County will serve as the lead on the IDEA Project and will use its long-standing economic development partner Solano EDC to provide additional staff resources to the IDEA Project. Solano EDC will assist in overall project management and facilitate the exploration of the quality of life issues identified in EDS.

The grant is currently under final review and validation and the County anticipates Notification of Grant award by the end of August and will begin the development of the IDEA Project at the beginning of September 2015 with completion in February of 2017.

The Project Approach; Expected Key Outcomes; Products and Deliverables; Budget Justification; and Milestones and Timeline is provided as an attachment to this staff report.

Recommendation:

Receive a presentation on the Moving Solano Forward Grant and IDEA Project

Attachments:

A – Moving SOLANO Forward IDEA

Moving SOLANO Forward

Implementation of Diversifying Economic Actions Project

PROJECT APPROACH

Based on the lessons learned in the Economic Diversification Study Project (EDS), the IDEA Project will use existing leadership structures to provide the policy oversight of the project. The City and County Coordinating Council (comprised of the five County supervisors and the mayor from each of the seven Solano cities) and the City Managers Group (comprised of the city managers of all seven cities and County administrator) will provide community-based leadership and policy oversight for the IDEA Project. A Review Committee will be established for the project, based upon membership from the EDS. Its membership will be revalidated and expanded as necessary.

Each of the IDEA Project components – Corridor Vision and Development, Cluster Analysis, Development Sites, Economic Development Data and Funding Mechanism – will be reviewed by the Review Committee that will work with the County/Solano EDC and the consultant to flush out concepts for approval by the City and County Coordinating Council and City Manager's Group. The membership in the Review Committee will draw from the technical expertise of the EDS and the lead agencies identified for the implementation actions.

Stakeholders will represent organizations actively engaged in collaborative efforts among the County and the seven cities in areas related to public policy and economic development, as well as representatives from business, industry and education. These community organizations include, but are not limited to, the Travis Regional Armed Forces Committee, the Travis Community Consortium, the Mayors Council, the Solano County Workforce Investment Board, the Solano College Small Business Development Center, Solano Community College and the Solano Transportation Authority.

EXPECTED KEY OUTCOMES

As a result of this Moving Solano Forward (MSF) Implementation of Diversifying Economic Actions (IDEA) Project, the County anticipates the following key outcomes:

- 1) A better understanding of potential public sector infrastructure investments that will induce private sector investment, which in turn will further diversify the local economy;
- 2) A better understanding of Solano County's assets and how they can be showcased to define the county as a distinctive and desirable region for economic development activity;
- 3) An assessment of strategic catalytic projects of countywide significance and improvements along the county's transportation corridors that, if pursued, will leverage Solano County's assets to further diversify base (wealth-generating) industries and expand industry clusters identified in the *2014 Economic Diversification Study*;
- 4) The identification of real estate, labor and other key needs of the identified industry cluster's needs, and any gaps in their needs, to be able to retain, expand or attract these clusters;
- 5) The development of a comprehensive database of economic and demographic information and contemporary web-based tools that will enhance the overall economic development ecosystem; and

- 6) Recommendations on potential local, state and federal funding sources to fund economic development activities. Identification of innovative local financing opportunities, such as a Solano Partnership and an associated structure to pursue collaborative infrastructure investments that will induce economic development activity.

PRODUCTS OR DELIVERABLES

The final deliverables for the IDEA project will be a Corridor Vision and Development Study; Identified Cluster Analysis; identification of best positioned Development Sites; a comprehensive database of economic information; a web-based application to access and share the economic information; a report outlining local state and federal funding opportunities; and recommendations for an organizational structure and funding mechanism to establish and sustain a local funding option.

BUDGET JUSTIFICATION

Solano County requests Office of Economic Adjustment (OEA) grant funding in the amount of \$453,460 for consultant costs with a non-federal match of \$53,208 from County and Solano EDC staff time.

Cost-Sharing

Total Grant Budget:	\$506,668
Federal Share:	\$453,460
Non-Federal Share:	\$53,208

MILESTONES AND TIMELINE

The County, in conjunction with the Solano EDC, will solicit and hire a consultant to serve as the Project Lead to deliver all five components of the Moving SOLANO Forward IDEA Project: Corridor Visioning and Development, Cluster Analysis, Development Sites, Economic Data, and Funding Mechanism. The grant period proposed for this project is 18 months to begin on September 1, 2015 and end on February 28, 2017. The following table outlines the project milestones and timeline:

MILESTONES	EST. COMPLETION DATE
Project Initiation	September 1, 2015
<ul style="list-style-type: none"> • Conduct RFP Process 	October 15, 2015
<ul style="list-style-type: none"> • Contract Award 	November 17, 2015
<ul style="list-style-type: none"> • Project Kick-Off Meeting 	November 20, 2015
Task 1: Project Management	Ongoing
Task 2: Corridor Visioning Study	September 16, 2016
Task 3: Cluster Analysis	September 30, 2016
Task 4: Development Sites	July 1, 2016
Task 5: Economic Development Data	October 6, 2016
Task 6: Funding Mechanism	October 14, 2016
Task 7: Reports and Presentations	February 28, 2017