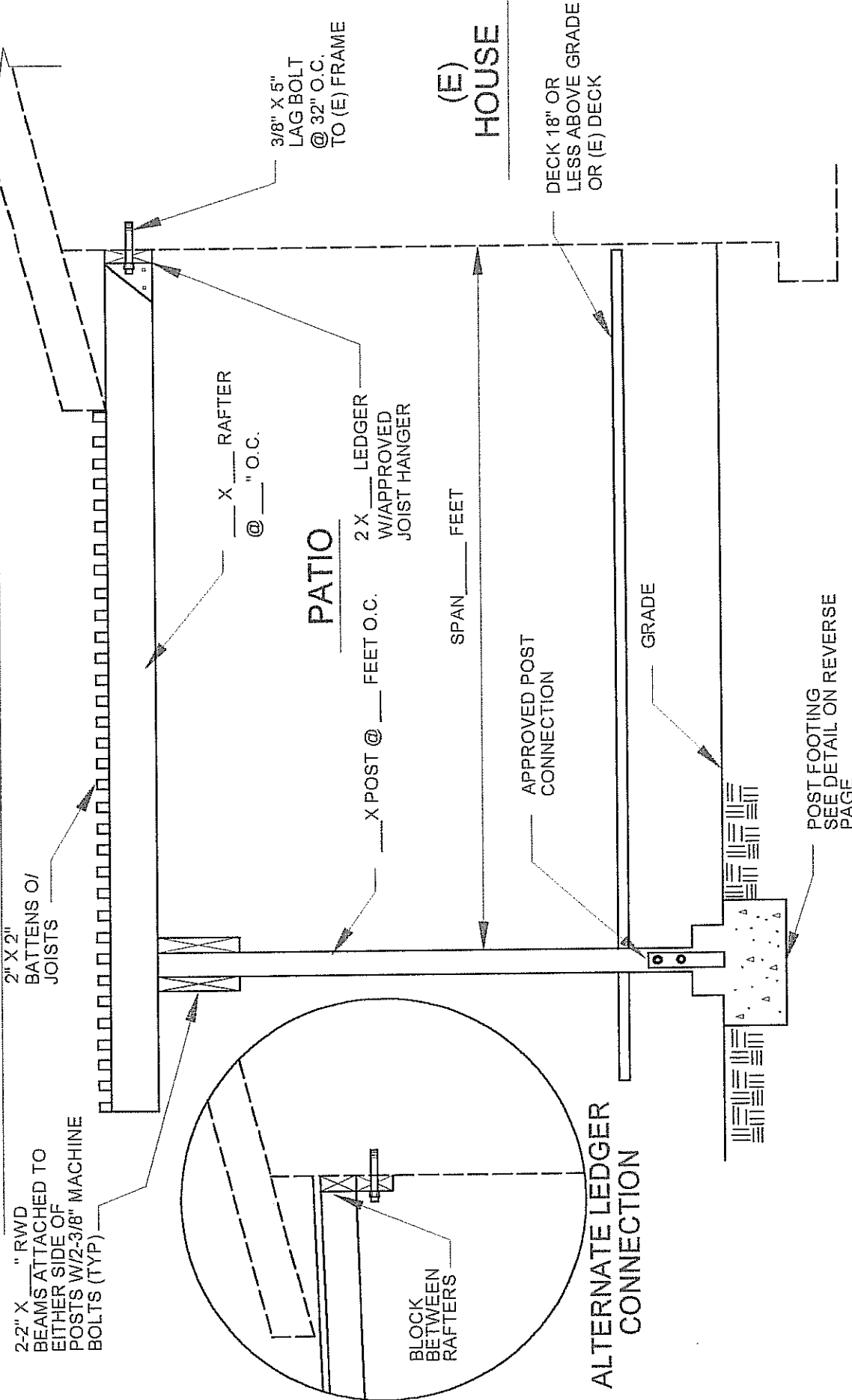


TYPICAL PATIO COVER CONSTRUCTION WOOD DECK



2-2" X ____ " RWD BEAMS ATTACHED TO EITHER SIDE OF POSTS W/2-3/8" MACHINE BOLTS (TYP)

2" X 2" BATTENS / JOISTS

X ____ " RAFTER @ ____ " O.C.

PATIO

X POST @ ____ FEET O.C.

2 X ____ LEDGER W/APPROVED JOIST HANGER

BLOCK BETWEEN RAFTERS

ALTERNATE LEDGER CONNECTION

(E) HOUSE

DECK 18" OR LESS ABOVE GRADE OR (E) DECK

SPAN ____ FEET

APPROVED POST CONNECTION

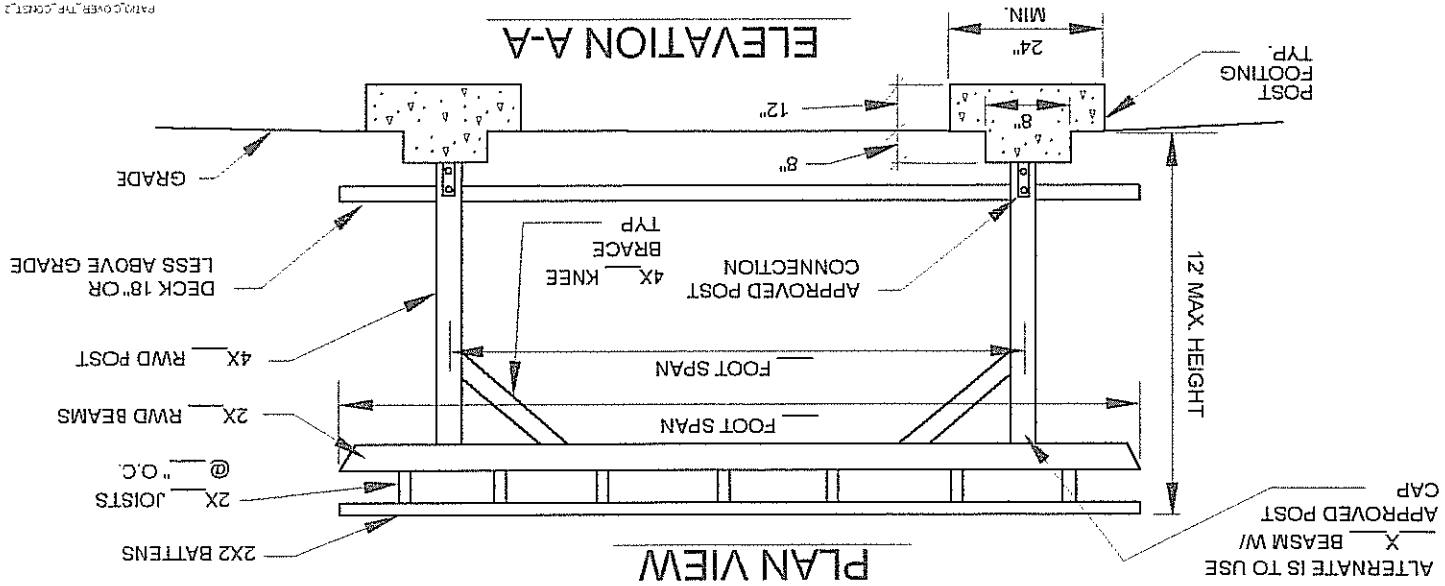
GRADE

POST FOOTING SEE DETAIL ON REVERSE PAGE

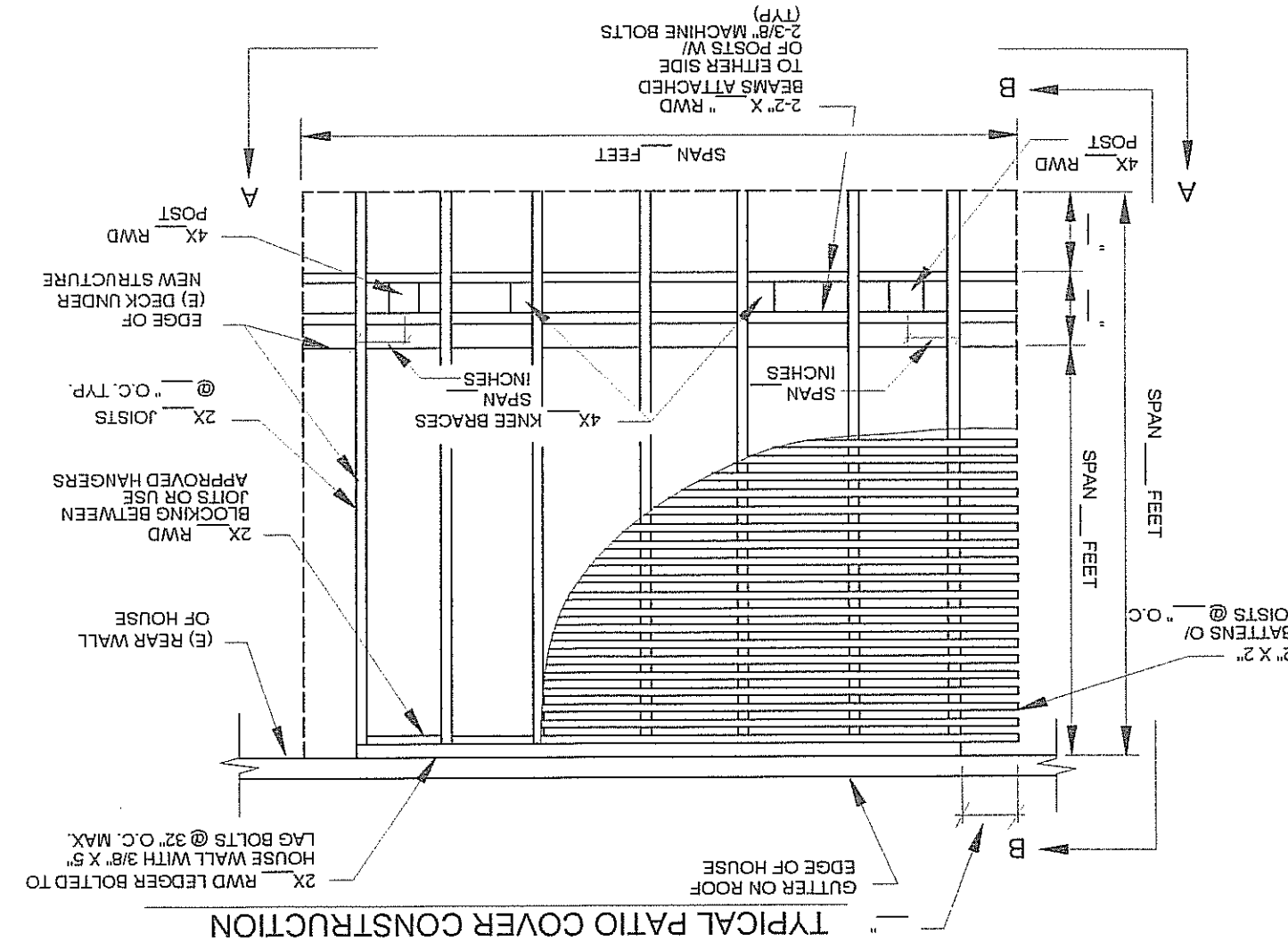
ELEVATION B-B

PATIO COVER THE CONCRETE

ELEVATION A-A



PLAN VIEW



TYPICAL PATIO COVER CONSTRUCTION

2X RWD LEDGER BOLTED TO HOUSE WALL WITH 3/8" X 5" LAG BOLTS @ 32" O.C. MAX.

(E) REAR WALL OF HOUSE

2X RWD BLOCKING BETWEEN JOISTS OR USE APPROVED HANGERS @ O.C. TYP.

EDGE OF NEW STRUCTURE (E) DECK UNDER

4X RWD POST

2-2" X " RWD BEAMS ATTACHED TO EITHER SIDE OF POSTS W/ 2-3/8" MACHINE BOLTS (TYP)

ALTERNATE IS TO USE APPROVED POST X BEAM W/ CAP

12 MAX. HEIGHT

POST FOOTING TYP.

MIN. 24"

8"

12"

GRADE

DECK 18" OR LESS ABOVE GRADE

4X RWD POST

2X RWD BEAMS

2X JOISTS @ O.C.

2X2 BATTENS

APPROVED POST CONNECTION

4X KNEE BRACE TYP.

FOOT SPAN

FOOT SPAN

SPAN FEET

4X RWD POST

SPAN FEET

SPAN FEET

SPAN FEET

2" X 2" BATTENS @ O.C.

GUTTER ON ROOF

EDGE OF HOUSE