

SOLANO COUNTY COUNTYWIDE INTEGRATED WASTE MANAGEMENT PLAN Siting Element

November 1995

**Environmental
Science
Associates**

301 Brannan St.
Suite 200
San Francisco, California
94107-1811
(415) 896-5900

Also offices in

Los Angeles

Sacramento

940527



SOLANO COUNTY
COUNTYWIDE SITING ELEMENT

TABLE OF CONTENTS

	<u>Page</u>
I. PURPOSE AND SCOPE	I-1
II. GOALS AND POLICIES	II-1
A. Introduction	II-1
B. Goals	II-2
C. Policies	II-1
D. Schedule for Implementation of Policies	II-2
III. DISPOSAL CAPACITY REQUIREMENTS	III-1
A. Introduction	III-1
B. Disposal Capacity Analysis	III-1
IV. EXISTING SOLID WASTE DISPOSAL FACILITIES	IV-1
A. Introduction	IV-1
B. Existing Landfills	IV-1
C. Characterization of Existing Disposal Sites	IV-2
V. SITING CRITERIA	V-1
A. Introduction	V-1
B. Siting Criteria	V-1
C. Procedures to Confirm Usage of Siting Criteria	V-3
D. Siting Element Approval	V-4
VI. LOCATION AND DESCRIPTION OF PROPOSED NEW AND EXPANDED FACILITIES	VI-1
A. Introduction	VI-1
B. Proposed Facilities	VI-1
C. Relationship to AB 939 Requirements	VI-1
VII. GENERAL PLAN CONSISTENCY	VII-1
A. Introduction	VII-1
B. Proposed Site Consistency with County General Plan	VII-1
VIII. SOLID WASTE DISPOSAL STRATEGIES WHEN SITES FOR ADDITIONAL CAPACITY ARE NOT AVAILABLE	VIII-1
A. Introduction	VII-1

SOLANO COUNTY
COUNTYWIDE SITING ELEMENT
TABLE OF CONTENTS(Continued)

		<u>Page</u>
IX.	SITING ELEMENT IMPLEMENTATION	IX-1
	A. Introduction	IX-1
X.	REFERENCES	X-1
	APPENDIX A: Local Task Force's Determination of Remaining Landfill Capacity	A-1
	APPENDIX B: Resolutions of the County Board of Supervisors and City Councils Adopting the Countywide Siting Element and Summary Plan	B-1
	APPENDIX C: Notice of Determination	C-1

LIST OF TABLES

III.1	Disposal Requirements for Solano County (Tons) for the 15-Year Planning Period, 1995-2009	III-1
III.2	Disposal Requirements for Solano County (Cubic Yards) for the 15-Year Planning Period, 1995-2009	III-4
IV.1	B & J Dropbox Sanitary Landfill Fact Sheet	IV-3
IV.2	Potrero Hills Landfill Fact Sheet	IV-5
IV.3	Aqua Clear Farms Fact Sheet	IV-6
IV.4	Rio Vista Landfill Fact Sheet	IV-7
IX.1	Siting Element Goals and Implementation	IX-2

LIST OF FIGURES

IV-1a	B & J Dropbox Sanitary Landfill	IV-8
IV-1b	Potrero Hills Landfill	IV-9
IV-1c	Aqua Clear Farms	IV-10
IV-1d	Rio Vista Landfill	IV-11
IV-2	Locations of Permitted Solid Waste Facilities	IV-12
VI-1	Proposed Expansion of Potrero Hills Landfill	VI-5

I. PURPOSE AND SCOPE

The California Integrated Waste Management Act of 1989, as amended, directs cities, counties, and regional agencies to prepare a Countywide or Regionwide Integrated Waste Management Plan. This plan must consist of the Source Reduction and Recycling Elements (SRREs), the Household Hazardous Waste Elements (HHWEs), and the Non-Disposal Facility Elements (NDFEs) of each jurisdiction within a county or region, and a Countywide or Regional Integrated Waste Management Plan Summary and Countywide or Regional Siting Element.

The statutory requirement for a Countywide or Regional Siting Element is set forth in the California Public Resources Code (PRC) Section 41700, as follows:

Each county shall prepare a countywide siting element which provides a description of the areas to be used for development of adequate transformation¹ or disposal capacity concurrent and consistent with the development and implementation of the county and city source reduction and recycling elements adopted pursuant to this part.

The principal purpose of this requirement is to demonstrate that within a county or region, there is a minimum of 15 years of combined permitted disposal capacity through existing or planned disposal facilities or through additional waste management strategies.

This document is the Solano County Countywide Siting Element. In accordance with statutory (PRC, Sections 41700-41721.5) and regulatory (California Code of Regulations [CCR] Sections 18755-18756.7) requirements, it consists of the following:

- goals and policies for the preparation of the Countywide Siting Element;
- the amount of city and unincorporated county wastes requiring disposal, the disposal capacity of landfills receiving Solano County wastes, and additional capacity required (if any) to provide a minimum of 15 years of solid waste disposal capacity;
- identification of existing solid waste disposal facilities receiving waste from Solano County and its cities;
- siting criteria for new or expanded solid waste disposal facilities;
- location and description of new or expanded disposal facility sites;
- verification of consistency with City and County General Plans;
- strategies for disposal of excess solid wastes; and
- procedures for implementing the Countywide Siting Element.

¹ It should be noted that in both the statute requiring preparation of a Siting Element and the CIWMB Siting Element Guidelines, the term waste disposal includes transformation (the elimination of wastes by incineration processes) as well as landfill disposal. In Solano County, however, there are currently no transformation facilities and the cities and unincorporated area of Solano County have no plans to develop transformation facilities as a means to reach the required waste diversion rate of 50% by the year 2000. Therefore, this Siting Element discusses only the landfill disposal options the Solano County jurisdictions will utilize.

II. GOALS AND POLICIES

A. INTRODUCTION

The first requirement for the preparation of a Countywide Siting Element is a statement of the Goals and Policies that ensure that sufficient solid waste disposal capacity is available to accommodate the wastes generated within a County and its incorporated cities for a 15-year planning period. The following goals and policies provide direction to Solano County and its cities for the development of Siting Element programs.

B. GOALS

- Implement an Integrated Waste Management Plan which maximizes waste diversion through source reduction, recycling and composting, and which provides for the disposal of the residue of wastes which can not be diverted through environmentally safe land disposal practices.
- Provide for landfill disposal capacity for a significant portion of the wastes generated by the County and its cities through implementation of planned expansions of the capacity of the existing Potrero Hills Landfill and the B & J Dropbox Sanitary Landfill.
- For those jurisdictions which, due to historical, contractual, or economic reasons, find it impossible or imprudent to deliver their wastes to landfills within the County, provide additional needed landfill capacity through export of city and/or County wastes to other counties and states whose landfills have sufficient capacity to accept Solano County's wastes for the required 15-year planning period.
- Develop appropriate recycling and composting programs at the County's landfills to divert recyclable and reusable materials from landfill disposal.
- Continue to support existing landfill load check and other programs to prevent disposal of such unacceptable wastes including hazardous wastes, liquid wastes, and designated wastes which have not been approved for disposal at County landfills.

C. POLICIES

- The County and its cities will collaborate with Solano County's landfill operators to ensure that planned landfill expansions will make available sufficient disposal capacity to provide for 15 years of disposal of wastes generated by the County and participating cities.

- The County and affected jurisdictions will work together with landfill operators and solid waste collection entities outside Solano County to ensure that wastes exported to other counties and states can be accommodated for the 15-year planning period, and that the importation of substantial quantities of out-of-county wastes to County landfills will not jeopardize Solano County's ability to provide sufficient disposal capacity for the County and affected cities.
- The Solano County Department of Environmental Management, serving as the Local Enforcement Agency (LEA) for the California Integrated Waste Management Board, will work together with the County's landfill operators to ensure that landfill disposal within Solano County is carried out in an environmentally safe manner.
- The County and the cities which deliver wastes to landfills within the County will work with the landfill operators to maximize the salvage and diversion of materials received at the landfills, through reuse, recycling, composting, and, upon approval of the CIWMB, through use of materials as alternative daily cover for the landfills.

D. SCHEDULE FOR IMPLEMENTATION OF POLICIES

A full implementation schedule is presented in Chapter IX.

III. DISPOSAL CAPACITY REQUIREMENTS

A. INTRODUCTION

This chapter analyzes the amount of waste disposal capacity available to Solano County and its jurisdictions. It demonstrates that there is sufficient capacity in landfills receiving wastes from the cities and unincorporated area of Solano County to handle the wastes of these jurisdictions for the 15-year planning period 1995-2009.

B. DISPOSAL CAPACITY ANALYSIS

The California Integrated Waste Management Board's (CIWMB) Planning Guidelines for Preparing a Siting Element (Siting Element Guidelines) (California Code of Regulations [CCR] Sections 18755[a] and 18755.3) require a Siting Element to demonstrate whether a county's jurisdictions can provide a minimum of 15 years of waste disposal capacity. This is perhaps the most important issue which the Siting Element must address; if the county can show that its jurisdictions have a minimum of 15 years of waste disposal capacity, it has met the principal planning requirement of the Siting Element.

The Siting Element Guidelines specify that the starting date for the 15-year planning period is the year in which the Siting Element is prepared (CCR Section 18755.3[b]), and that the planning period starting dates for future updated versions of the Siting Element are to be the years the Siting Element is revised. The starting date for Solano County's 15-year disposal capacity planning period is January 1, 1995. This 15-year period will end on December 31, 2009.

The Siting Element Guidelines also indicate that the Siting Element must show countywide waste disposal capacity on January 1, 1990 (CCR Section 18755.3[a]). The Siting Element must also include documentation of the determination made by the Local Task Force of remaining permitted disposal capacity as of January 1, 1990 (CCR, Sections 18755.3[a][1], and 18777[b]) (see Appendix A). This date is considered the baseline date for determining the amount of waste which must be diverted to achieve the mandated 25 and 50% waste diversion rates. For Solano County, the amount of waste requiring disposal on January 1, 1990 was 274,475 tons, or 430,926 cubic yards.

Tables III.1 and III.2 indicate that there is sufficient waste disposal capacity available to Solano County jurisdictions to satisfy the 15-year disposal capacity requirement. These tables show that as of January 1, 1995, Solano County landfills receiving municipal solid waste had 38,112,000 cubic yards, or 24,800,720 tons of waste disposal capacity. During the ensuing 15 years, this capacity will be reduced to 29,931,462 cubic yards, or 19,590,186 tons of waste disposal capacity. No additional capacity is required to meet the 15-year planning requirement.

TABLE III.1: DISPOSAL REQUIREMENTS FOR SOLANO COUNTY (TONS) FOR THE 15-YEAR PLANNING PERIOD 1995-2009

Year	Total Generation/1/	Diversion/2/	Disposal/3/	Exports/4/	Imports/5/	Annual Disposal Needs/6/	Remaining Capacity/7/	Additional Capacity Needed/8/
1990	394,425	37,619	356,806	133,451	51,120	274,475	26,433,148	0
1991	407,390	42,633	364,757	136,750	59,760	287,767	26,145,381	0
1992	420,867	67,984	352,883	131,433	147,769	369,219	25,776,162	0
1993	434,878	109,955	324,923	116,389	68,835	277,369	25,498,793	0
1994	449,451	135,286	314,165	109,158	111,967	316,974	25,181,819	0
1995	464,610	153,450	311,160	107,709	177,648	381,099	24,800,720	0
1996	475,055	194,710	280,345	98,383	190,751	372,713	24,428,007	0
1997	485,815	242,456	243,359	83,172	208,502	368,689	24,059,317	0
1998	496,905	257,744	239,161	81,298	207,110	364,973	23,694,344	0
1999	508,332	270,343	237,989	78,093	205,625	365,521	23,328,822	0
2000	520,111	277,334	242,777	78,589	202,850	367,038	22,961,784	0
2001	531,863	283,533	248,330	79,881	200,162	368,611	22,593,173	0
2002	543,943	289,904	254,039	81,206	197,400	370,233	22,222,940	0
2003	556,357	296,451	259,906	82,558	194,567	371,915	21,851,025	0
2004	569,117	303,182	265,935	83,943	191,657	373,649	21,477,376	0
2005	582,232	310,098	272,134	85,360	188,671	375,445	21,101,931	0
2006	590,790	314,490	276,300	85,745	185,872	376,427	20,725,503	0
2007	599,552	318,987	280,565	86,139	182,997	377,424	20,348,079	0
2008	608,526	323,592	284,934	86,542	180,043	378,434	19,969,645	0
2009	617,717	328,308	289,409	86,956	177,007	379,459	19,590,186	0
TOTALS	10,257,935	4,558,059	5,699,876	1,912,755	3,330,316	7,117,437		

(Continued)

TABLE III.1: DISPOSAL REQUIREMENTS FOR SOLANO COUNTY (TONS) FOR THE 15-YEAR PLANNING PERIOD 1995-2009 (Continued)

NOTES:

- /1/ Projected changes in generation are taken from the SRREs for the years through 2005, then from ABAG population projections for the years 2006-2009. ABAG projections from *Projections '94* indicated the following annual rates of population change:
- | | |
|----------------|------|
| Benicia: | 1.7% |
| Dixon: | 1.4% |
| Fairfield: | 2.3% |
| Rio Vista: | 7.3% |
| Suisun: | 1.0% |
| Vacaville: | 1.5% |
| Vallejo: | -.1% |
| Uninc. County: | 2.5% |
- /2/ Diversion is based on SRRE projections, assuming planned programs will be implemented and, for the years 2006-2009, based on the same population projections as were used for the Generation column.
- /3/ Disposal is calculated by subtracting Diversion from Generation.
- /4/ The use of the term "exports" differs in the SRREs and in this document. In the SRREs, "exports" refers to materials transported out of a particular jurisdiction for disposal. For example, Dixon and Vacaville "exported" their wastes to the unincorporated County, where B & J Landfill is located. In the Siting Element, "exports" refer to materials transported out of the County. Exports figures are based on projections in the Facility Capacity Components of the SRREs for Benicia, Vallejo, and part of the unincorporated County (that portion of the unincorporated County's exports that were not being sent in 1990 to the Rio Vista landfill, as indicated in the Facility Capacity Components for Solano County and Rio Vista), and on projected population increases for the years 2006-2009. However, reports from the Yolo County Central Landfill indicate that actual exports to that landfill are lower than projected, perhaps because the tipping fee has increased substantially.
- /5/ This column shows imports assuming that the B&J Landfill will import 200 tons per year, and that the Potrero Hills landfill will import wastes up to its currently permitted average daily limit of 850 tons. The Potrero Hills Landfill has, however, requested an increase in its permitted capacity to an average daily rate of 2,400 tons, calculated on a monthly limit, with a maximum peak of 4,300 tons per day (Jones & Stokes, 1993a). Potrero Hills Landfill has provided the County with four scenarios for waste receipts, and the corresponding site capacity and service life (memo to Lidiya Kvashina, from Joel Waxdeck, P.E., dated December 2, 1994). At the highest projected rate of fill, which would include importing wastes from the planned Pittsburg Transfer Station along with, eventually, two other regional transfer stations (and also accepting wastes from Benicia) the remaining capacity of the landfill at the beginning of the year 2010 would be 380,973 cubic yards, and would run out of capacity later that year.
- /6/ Annual Disposal figures are derived from adding disposal and imports, then subtracting exports.
- /7/ As reported in Joel Waxdeck op.cit., and in personal communication from Karen Wyeth, February 1995, less cumulative annual disposal, Potrero Hills Landfill had, as of January 1, 1995, 18,312,000 cubic yards of capacity, and a fill ratio (cy:ton) of 1.48 for estimated remaining capacity in tons of 12,360,600; B&J landfill had 20,775,000 cubic yards of remaining capacity and a fill ratio of 1.67 for an estimated remaining capacity of 12,440,120 tons. This gives a total of 24,800,720 tons of remaining capacity.
- /8/ If remaining capacity is greater than annual disposal, this number is zero.

TABLE III.2: DISPOSAL REQUIREMENTS FOR SOLANO COUNTY (CUBIC YARDS) FOR THE 15-YEAR PLANNING PERIOD 1995-2009//

Year	Total Generation	Diversion	Disposal	Exports	Imports	Annual Disposal Needs	Remaining Capacity	Additional Capacity Needed
1990	788,850	75,238	713,612	266,902	102,240	430,926	40,674,912	0
1991	814,780	85,266	729,514	273,500	119,520	451,794	40,223,118	0
1992	841,734	135,968	705,766	262,866	295,538	579,674	39,643,444	0
1993	869,756	219,910	649,846	232,778	137,670	435,469	39,207,975	0
1994	898,902	270,572	628,330	218,316	223,934	497,649	38,710,325	0
1995	929,220	306,900	622,320	215,418	355,296	598,325	38,112,000	0
1996	950,110	389,420	560,690	196,766	381,503	585,160	37,526,840	0
1997	971,630	484,912	486,718	166,344	417,005	578,842	36,947,998	0
1998	993,810	515,488	478,322	162,596	414,221	573,008	36,374,989	0
1999	1,016,664	540,686	475,978	156,186	411,251	573,869	35,801,121	0
2000	1,040,222	554,668	485,554	157,178	405,701	576,250	35,224,870	0
2001	1,063,726	567,066	496,660	159,762	400,324	578,719	34,646,152	0
2002	1,087,886	579,808	508,078	162,412	394,801	581,266	34,064,885	0
2003	1,112,714	592,902	519,812	165,116	389,133	583,906	33,480,979	0
2004	1,138,234	606,364	531,870	167,886	383,315	586,630	32,894,350	0
2005	1,164,464	620,196	544,268	170,720	377,342	589,449	32,304,901	0
2006	1,181,580	628,980	552,599	171,489	371,745	590,991	31,713,909	0
2007	1,199,104	637,974	561,130	172,277	365,994	592,555	31,121,354	0
2008	1,217,051	647,184	569,867	173,085	360,086	594,142	30,527,212	0
2009	1,235,433	656,616	578,817	173,913	354,014	595,751	29,931,462	0
TOTALS	20,515,871	9,116,118	11,399,752	3,825,510	6,660,632	11,174,376		

// A conversion factor of two cubic yards per ton was used to calculate volumes for generation, disposal, and diversion, as well as import and export, based on Table III.1. The conversion factor for "Annual Disposal Needs" is based on the average fill ratio as reported by the B&J Landfill and the Potrero Hills Landfill; a factor of 1.57 cubic yards per ton was used.

IV. EXISTING SOLID WASTE DISPOSAL FACILITIES

A. INTRODUCTION

This chapter describes the permitted solid waste disposal facilities which currently receive municipal solid waste from Solano County. It includes a general description identifying the waste disposal facilities handling Solano County waste, fact sheets providing descriptive information on each waste disposal site, and maps showing the location of each waste disposal facility.

B. EXISTING LANDFILLS

Currently, there are two landfills in Solano County and two landfills outside the County's borders which receive municipal solid waste generated from Solano County jurisdictions.

In the northern unincorporated area of Solano County, east of Vacaville, the B & J Drop Box Sanitary Landfill disposes of municipal solid waste from Dixon, Vacaville, and the surrounding unincorporated area of the County. B & J Drop Box Sanitary Landfill is awaiting issuance of a solid waste facility permit and Waste Discharge Requirements for an expansion. The environmental impact report for this expansion has been certified, and the County has issued a land use permit. The additional capacity of the expansion area is included in site life projections in this document, although the expansion has not received its final permits. The B & J Landfill is currently applying for an amendment to their permits to convert from a Class III (MSW) to a Class II (accepting designated wastes) landfill.

In the central part of the County, south of Highway 12 and east of Fairfield, the Potrero Hills Landfill (PHLF) accepts municipal solid wastes from Fairfield, Suisun City, Rio Vista, Travis Air Force Base, and the surrounding unincorporated area of Solano County. The PHLF is seeking to amend its Solid Waste Facility Permit to allow it to increase the permitted rate of waste disposal at the site, to expand recycling operations at the landfill, and to make modifications to operational procedures. These changes will affect the rate of landfilling at the PHLF, but not the disposal capacity of the existing landfill. In the future, the Potrero Hills Landfill may also seek to expand landfill operations onto land it owns next to the existing landfill property. This proposed landfill expansion is discussed in Chapter VI.

In Napa County, the adjacent county to the west of Solano County, the American Canyon Landfill receives municipal solid wastes from Vallejo and the surrounding unincorporated area of southern Solano County. In Contra Costa County to the south of Solano County, the Keller Canyon Landfill disposes of solid wastes from the City of Benicia. The South Napa Waste Management Authority, which owns the American Canyon Landfill, has recently built a transfer station in the unincorporated area north of the Landfill. Waste from the City of Vallejo and the surrounding unincorporated area that was being delivered to the American Canyon Landfill is now delivered to the new transfer station (since the facility opened in June of 1995). The Authority has an agreement with Rabanco, Inc., to rail-haul material from the transfer station to

IV. Existing Solid Waste Disposal Facilities

the Roosevelt Regional Landfill in eastern Washington state. The term of this agreement is 10 years, extendible by the Authority for up to an additional 20 years. The existing capacity of the Roosevelt Regional Landfill, as of 1995, is approximately 115 million tons (approximately 192 million cubic yards at a reported density of 1,200 pounds per cubic yard). The maximum annual permitted rate of disposal is 3 million tons, and the actual annual disposal is between 1.6 and 1.7 million tons. There is no time limit on the operating permit of this facility (Morck, 1995). At the maximum permitted rate of disposal, the site life of this facility would be approximately 38 years. Solid waste from Benicia is taken to the STAR transfer station in Pacheco, Contra Costa County, and from there it is hauled to the Keller Canyon Landfill, located in unincorporated Contra Costa County south of the City of Pittsburg. Keller Canyon Landfill opened in 1992 with a total design capacity of 60 million cubic yards (Contra Costa County, 1993), and a projected site life of over 30 years.

There are two additional landfills in Solano County, the Rio Vista Landfill and Aqua Clear Farms. The Rio Vista Landfill is an inactive waste disposal site which formerly disposed of waste from the City of Rio Vista and the surrounding unincorporated area of Solano County. Currently, the landfill accepts no waste; it is expected to undergo formal closure once closure and post-closure maintenance plans are approved by the CIWMB.

Aqua Clear Farms is a Class II landfill located in the unincorporated area of southeastern Solano County which is permitted to receive only drilling mud from oil and gas exploration and development operations. An estimated 30,000 tons of drilling mud are generated per year in Solano County (Solano County SRRE, May 1992, p V-5). The SRRE for the unincorporated area of Solano County, however, does not include drilling mud in the inventory of wastes used to determine the amount of generated wastes required to achieve mandated rates of waste diversion (Solano County SRRE, pp. V-6 and V-16). Consideration of the use of drilling mud as an alternative to soil for daily cover in landfill operations is discussed in the recent EIR for the B & J Landfill Master Development Plan (B & J Draft EIR, December 1992, pp. 13-8 through 13-21).

C. CHARACTERIZATION OF EXISTING DISPOSAL SITES

The Siting Element Guidelines require specific descriptive information for each permitted solid waste disposal facility located Countywide (CCR Sections 18755.5[a] and [b]). Tables IV.1 through IV.4 provide this information; Figures IV-1a through IV-1d and Figure IV-2 indicate the location of these facilities. For a description of planned new or expanded waste disposal facilities, see Chapter VI.

IV. Existing Solid Waste Disposal Facilities

TABLE IV.1: B & J DROP BOX SANITARY LANDFILL FACT SHEET

1. FACILITY INFORMATION	
a. Facility Name	B & J Drop Box Sanitary Landfill
b. Facility Owner and Operator	B & J Drop Box Corporation. Site owned by Vaca-Fill; Vaca-Fill owned 90% by B & J Drop Box Corporation, 10% by Vista Del Mar.
2. PERMIT INFORMATION	
a. Solid Waste Facilities Permit Number	SWFP #: 48-AA-0002; Conditional Use Permit #: U-91-28
b. Permit Expiration Date	SWFP has no expiration date and is currently being revised.
c. Date of Last Permit Review	Last RDSI was May 8, 1995 to amend SWFP which was issued July 28, 1992; last PSR was June 4, 1990.
d. Estimate of Remaining Site Life	Remaining capacity: 20,775,000 cubic yards as of January 1, 1995, or 12,440,120 tons. At current maximum permitted rate of disposal, remaining site life is 123 years, or 98 years at the maximum allowed under a stipulated agreement modifying the current SWFP.
3. MAXIMUM PERMITTED RATE OF DISPOSAL	
a. Daily	SWFP allows the acceptance of 280 TPD with a maximum of 700 tons on any given day.
b. Yearly	280 x 361 (days open per year) = 101,080 tons/year. However, a stipulated agreement allows receipt of 350 tpd with an 875 ton maximum: 350 x 361 = 126,350 tons/year.
4. AVERAGE RATE OF DAILY WASTE RECEIPT (Figures are for 1994)	
a. Tons	$\frac{124,079}{361} \cong 344$ tons per day
b. Cubic Yards	$\frac{206,799 \text{ yd}^3}{361} \cong 573 \text{ yd}^3$ per day

(Continued)

IV. Existing Solid Waste Disposal Facilities

TABLE IV.1: B & J DROP BOX SANITARY LANDFILL FACT SHEET (Continued)

5. PERMITTED WASTE TYPES

a. Permitted Types of Waste

Municipal solid waste including: garbage, rubbish, tires, street refuse, C&D materials, municipal waste water treatment solids, agricultural wastes, asbestos-containing wastes, dead animals, dried sewage sludge, lake and wildlife habitat.

6. FUTURE LAND USE

a. Expected land use for areas to be closed or phased out within the 15-year planning period (1995-2009)

Non-irrigated open space, lake and wildlife habitat.

SOURCE: Solano County Department of Environmental Management

TABLE IV.2: POTRERO HILLS LANDFILL FACT SHEET

1. FACILITY INFORMATION	
a. Facility Name	Potrero Hills Landfill
b. Facility Owner and Operator	Potrero Hills Landfill, Inc.
2. PERMIT INFORMATION	
a. Solid Waste Facilities Permit Number	SWFP #: 48-AA-0075; Conditional Use Permit #: U-88-33
b. Permit Expiration Date	SWFP has no expiration date.
c. Date of Last Permit Review	SWFP was issued December 15, 1989.
d. Estimate of Remaining Site Life	Remaining capacity as of January 1, 1995 is 18,312,000 cubic yards, or 12,360,000 tons. Site life is projected at greater than 15 years (40 years at current maximum permitted rate of disposal).
3. MAXIMUM PERMITTED RATE OF DISPOSAL	
a. Daily	850 TPD
b. Yearly	850 x 363 (days open per year) = 308, 550 tons/year.
4. AVERAGE RATE OF DAILY WASTE RECEIPT (Figures are for 1994)	
a. Tons	715 tons per day
b. Cubic Yards	1,430 yd ³ (based on 1,000 lbs/yd ³ density)
5. PERMITTED WASTE TYPES	
a. Permitted Types of Waste	Non-hazardous municipal solid waste including: garbage, rubbish, tires, street refuse, dead animals, C&D materials, municipal waste water treatment solids, agricultural wastes. Asbestos wastes as approved.
6. FUTURE LAND USE	
a. Expected land use for areas to be closed or phased out within the 15-year planning period (1995-2009)	Open space as well as a Resource Recovery Zone (composting, processing of recyclable materials, etc.).

SOURCE: Solano County Department of Environmental Management

IV. Existing Solid Waste Disposal Facilities

TABLE IV.3: AQUA CLEAR FARMS FACT SHEET

1. FACILITY INFORMATION	
a. Facility Name	Aqua Clear Farms
b. Facility Owner and Operator	Aqua Clear Farms Corporation 826 Elm Way, Rio Vista, California 94571
2. PERMIT INFORMATION	
a. Solid Waste Facilities Permit Number	SWFP #: 48-AA-0006; issued February 27, 1984; Conditional Use Permit #: U-89-33.
b. Permit Expiration Date	SWFP has no expiration date.
c. Date of Last Permit Review	None.
d. Estimate of Remaining Site Life	> 10 years.
3. MAXIMUM PERMITTED RATE OF DISPOSAL	
a. Daily	35,000 barrels per month averaged over one year (one barrel = 42 gallons).
b. Yearly	420,000 barrels; $420,000 \text{ barrels} / 365 \text{ days} \approx 1,150 \text{ barrels}$ (42 gal/barrel) $\approx 48,329 \text{ gallons}$ $X \text{ ft}^3 / 7.48 \text{ gal} X \text{ yd}^3 / 27 \text{ ft}^3 \approx 239 \text{ yd}^3$.
4. AVERAGE RATE OF DAILY WASTE RECEIPT (Figures are for 1994)	
a. Tons	$\frac{13,906}{365} = 38 \text{ tons per day}$
b. Cubic Yards	1994 values 69,800 barrels $\approx 190 \text{ barrels/day}$ $\approx 40 \text{ yd}^3/\text{day}$
5. PERMITTED WASTE TYPES	
a. Permitted Types of Waste	Drilling mud and drill cuttings only.
6. FUTURE LAND USE	
a. Expected land use for areas to be closed or phased out within the 15-year planning period (1995-2009)	Non-irrigated open space. No other plans at this time.

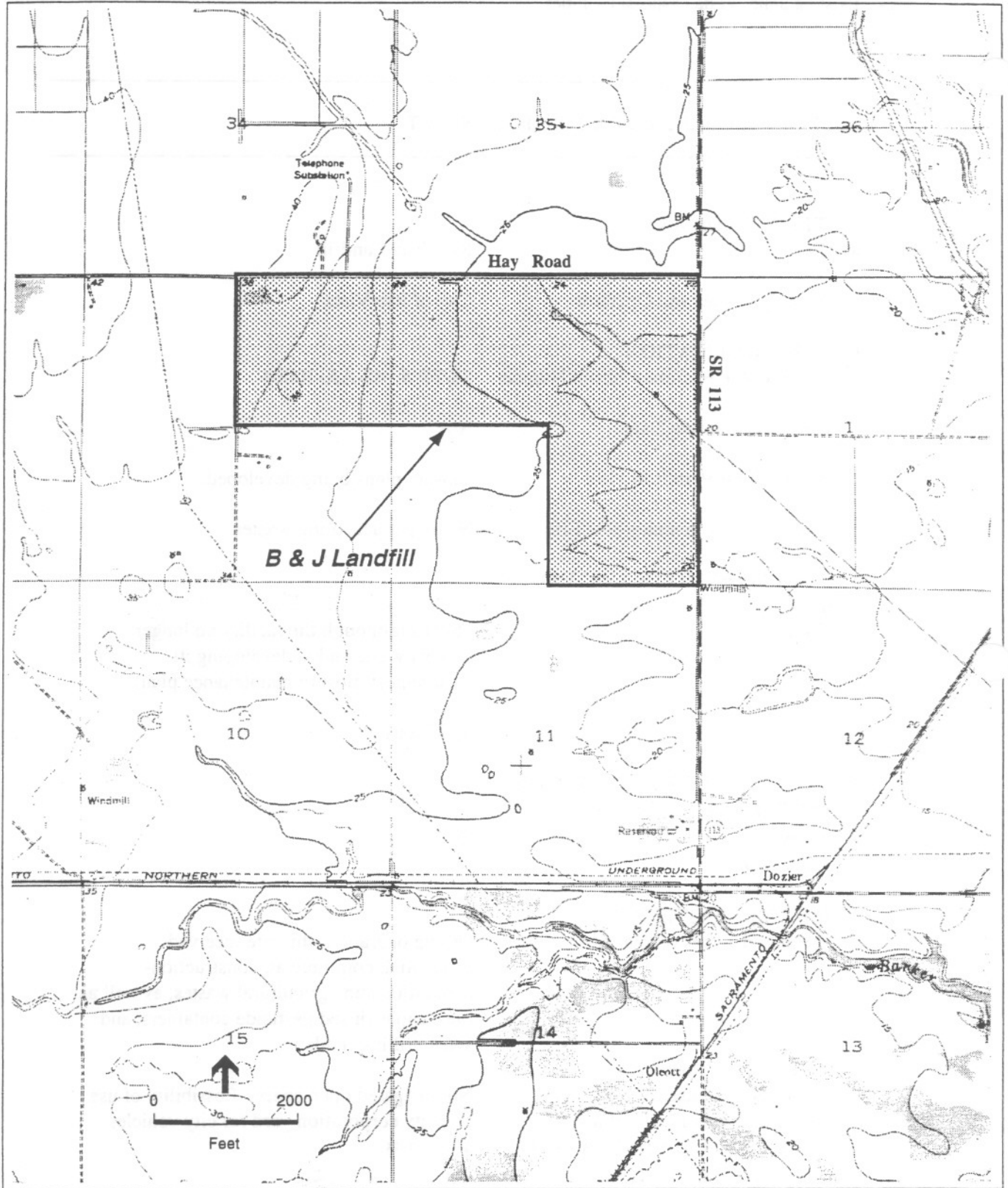
SOURCE: Solano County Department of Environmental Management

IV. Existing Solid Waste Disposal Facilities

TABLE IV.4: RIO VISTA LANDFILL FACT SHEET

1. FACILITY INFORMATION	
a. Facility Name	Rio Vista Landfill
b. Facility Owner and Operator	City of Rio Vista
2. PERMIT INFORMATION	
a. Solid Waste Facilities Permit Number	SWFP #: 48-AA-10004
b. Permit Expiration Date	N/A
c. Date of Last Permit Review	Closure plans being developed.
d. Estimate of Remaining Site Life	No longer accepting wastes.
3. MAXIMUM PERMITTED RATE OF DISPOSAL	
a. Daily	15 tons (although the facility no longer accepts waste and is developing its closure/post-closure maintenance plan).
b. Yearly	5,475 tons
4. AVERAGE RATE OF DAILY WASTE RECEIPT (Figures are for 1994)	
a. Tons	Ø
b. Cubic Yards	Ø
5. PERMITTED WASTE TYPES	
a. Permitted Types of Waste	During operation, this site received residential, commercial, construction-demolition and agricultural wastes, as well as tires, triple-rinsed pesticide containers, and some drilling muds.
6. FUTURE LAND USE	
a. Expected land use for areas to be closed or phased out within the 15-year planning period (1995-2009)	Non-irrigated open space. Possibility of use as a city corporation yard for city vehicles also exists.

SOURCE: Solano County Department of Environmental Management

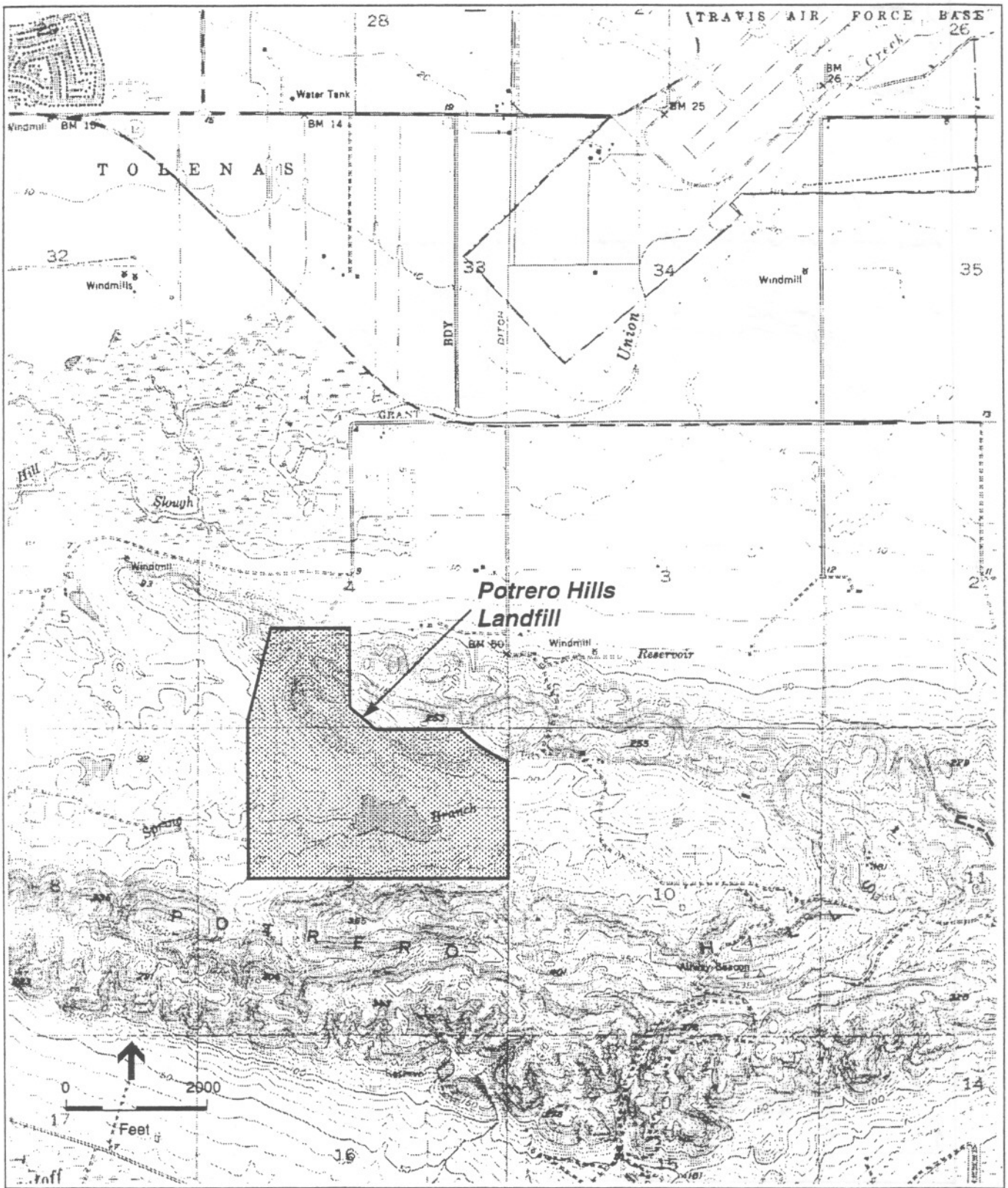


SOURCE: B & J Dropbox Sanitary Landfill Master Development Plan DEIR,
 Brown and Caldwell, Consultants, December 1992.
 USGS, Dozier, 7.5' Quadrangle

Solano Co. Siting Element / 940527 ■

Figure IV-1a

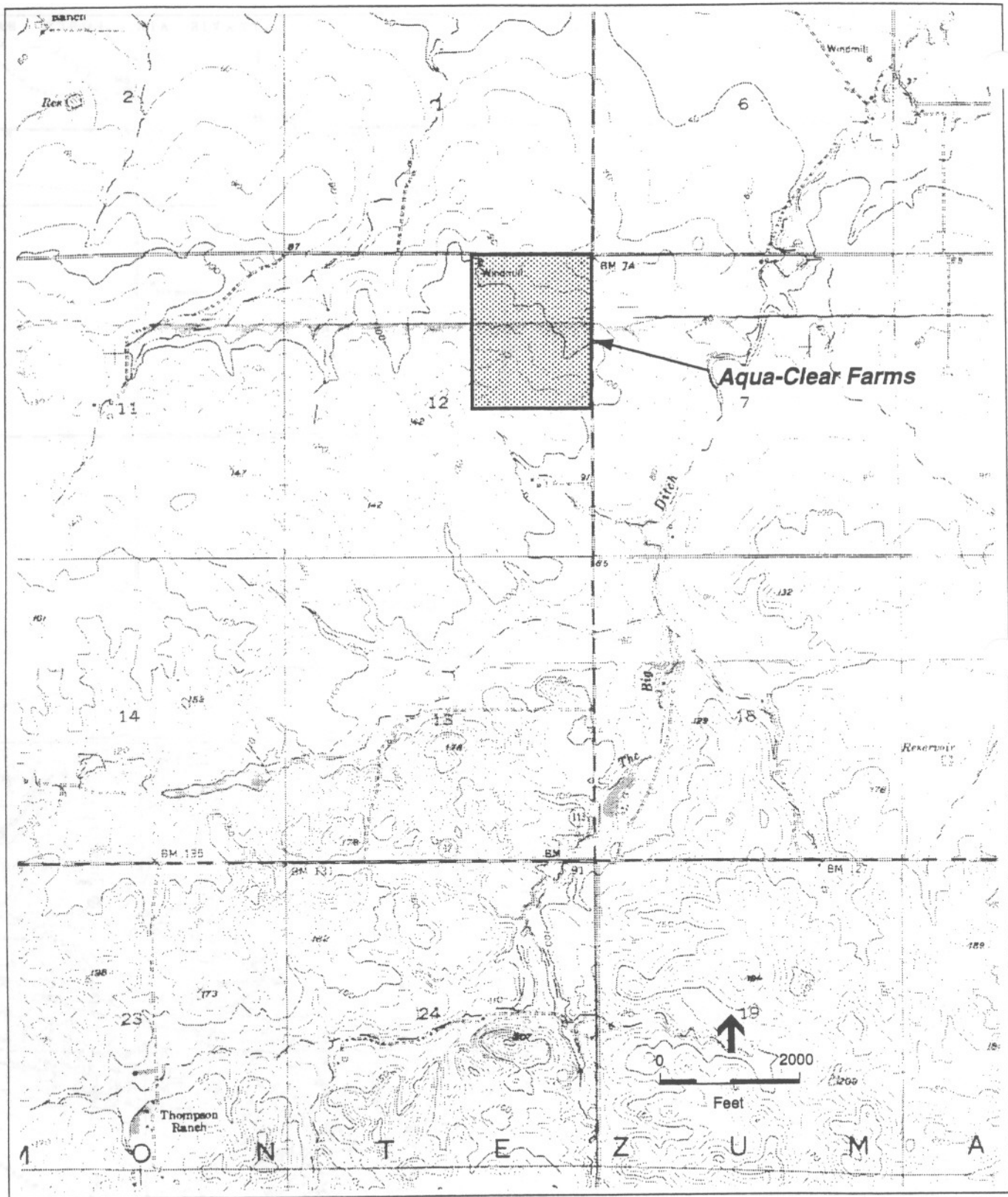
B & J Dropbox Sanitary Lan



SOURCE: DEIR for an Amendment to the Potrero Hills Landfill Land Use Permit, Marsh Development Permit, and Revision to the Solid Waste Facilities Permit. Jones and Stokes, September 1993. USGS, Denver. 7.5' Quadrangle

Solano Co. Siting Element / 940527 ■

Figure IV-1b
Potrero Hills Landfill

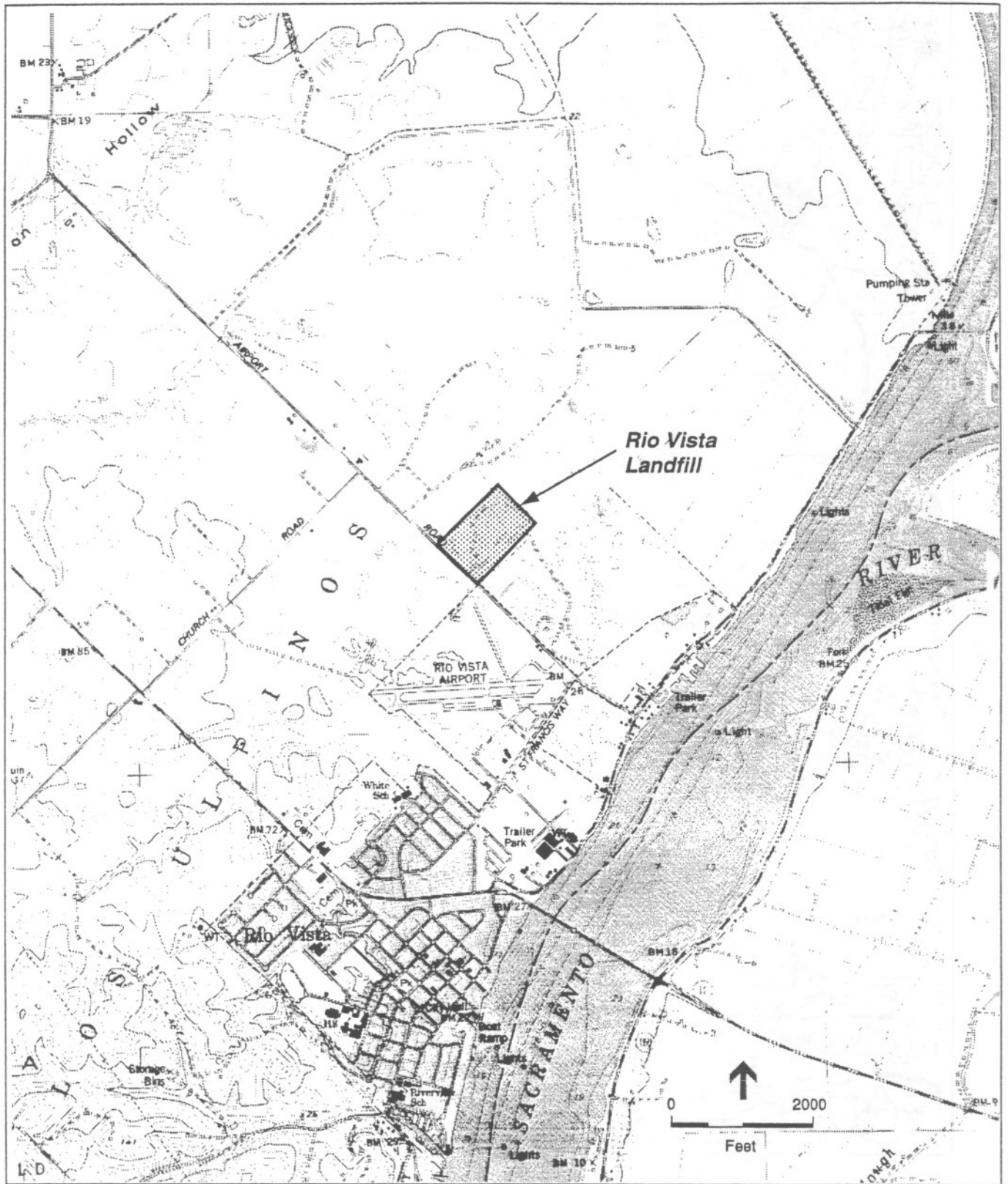


SOURCE: Report of Disposal Site Information,
 Harding Lawson Associates, October 1990
 USGS, Birds Landing, 7.5" Quadrangle

Solano Co. Siting Element / 940527 ■

Figure IV-1c

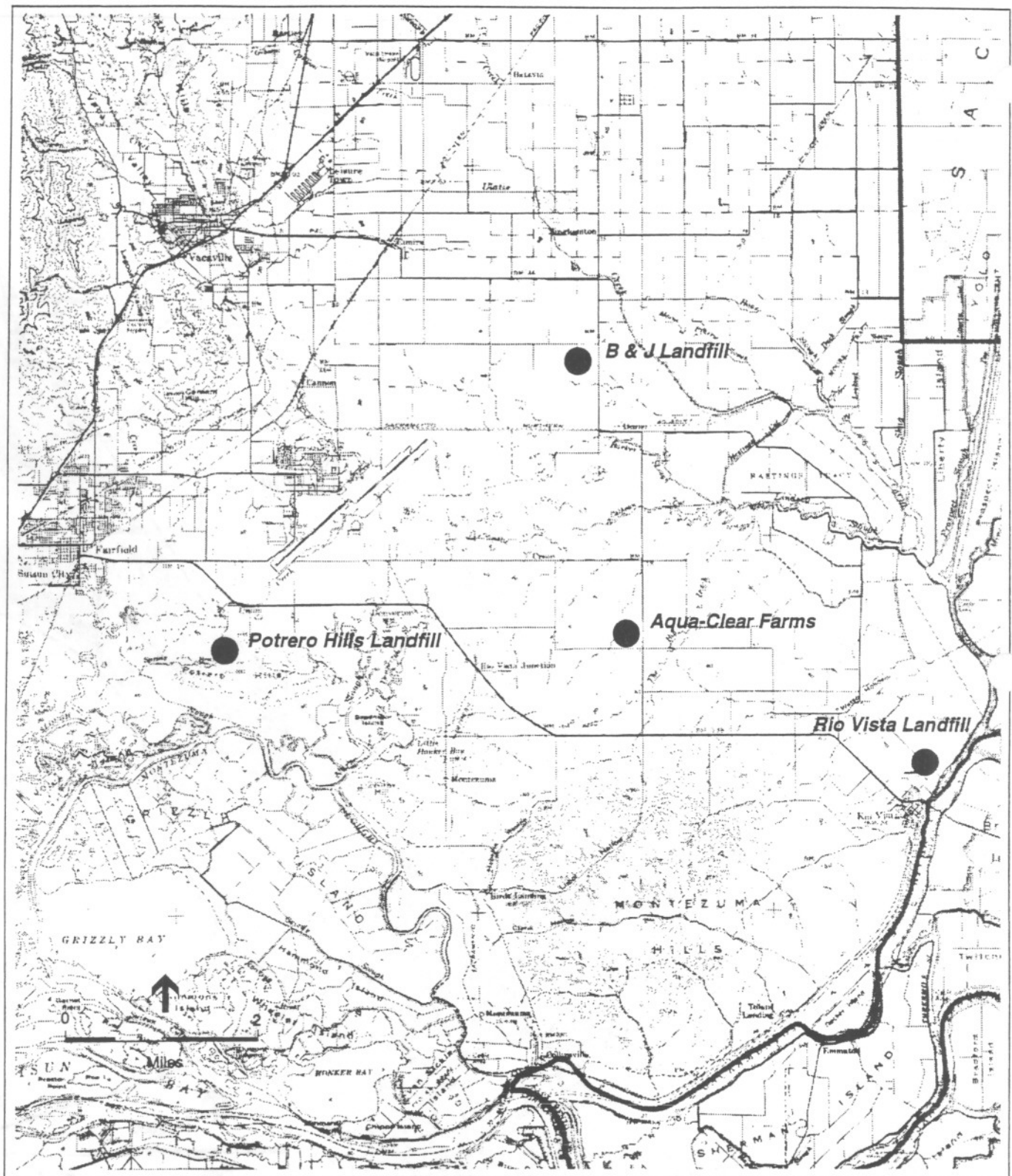
Aqua-Clear Farms, I
 Drilling Muds Landfill



SOURCE: City of Rio Vista Landfill Report
 September 1989, Whitley, Burchette and Associates, Inc.
 USGS, Rio Vista 7.5' Quadrangle

Solano Co. Siting Element / 940527 ■

Figure IV-1d
 Rio Vista Landfill



SOURCE: Environmental Science Associates

Solano Co. Siting Element / 940527 ■

Figure IV-2

Locations of Permitted
Solid Waste Facilities

V. SITING CRITERIA

A. INTRODUCTION

This chapter identifies criteria for siting new or expanded waste disposal facilities in Solano County. It also describes the process to be instituted to confirm that waste disposal facility siting criteria are included as part of the countywide solid waste disposal facility siting process.

B. SITING CRITERIA

The Siting Element Guidelines require an identification of criteria to be used for siting new or expanded solid waste disposal facilities. The siting criteria must be grouped according to major categories specified in the Siting Element Guidelines (CCR Section 18756). The major categories include environmental considerations, environmental impacts, legal considerations, and any additional criteria the County and its cities may wish to impose. The following are the solid waste disposal facility siting criteria for Solano County. References for code or regulatory citations are provided for those siting criteria which are based on federal or state regulatory requirements.

MAJOR CATEGORY OF SITING CRITERIA

CRITERION

Environmental Considerations

New or expanded solid waste disposal facility sites shall be sited in an appropriate geologic setting. Sites which are to be developed to receive hazardous or designated wastes (Class I and Class II landfills) shall be set back more than 200 feet from known Holocene faults. Non-hazardous waste landfills (Class III landfills) shall not be located on a known Holocene fault. (CCR Title 23, Chapter 15, Sections 2531[d], 2532[d] and 2533[d].)

New Class I landfills shall be located outside a 100-year floodplain. New or expanded Class II or Class III landfills may be located within a 100-year floodplain but must be designed and operated to prevent inundation or washout due to a 100-year flood. (CCR Title 23 Chapter 15, Sections 2531[c], 2532[c] and 2533[c].)

All new or expanded landfills shall be constructed and operated so as to ensure that

Environmental Considerations
(Continued)

wastes will be a minimum of five feet above the highest anticipated elevation of underlying groundwater, or provide an acceptable engineered alternative. (CCR Title 23 Chapter 15, Section 2530[c].)

New or expanded landfills shall not be located in wetlands.

New or expanded landfills shall not be located so as to alter major drainages.

Environmental Impacts

The development of new or expanded landfills shall not disrupt or adversely affect known prehistoric or historic archaeological sites or properties deemed of historic, religious, or cultural significance.

Potential disposal facility sites where operations will not be easily visible shall be considered more favorably than sites where operations are easily visible from off site, or where site operations cause an impairment of scenic resources.

New or expanded landfills shall not be sited in areas where there would be a substantial loss in native vegetation, or where there would be direct mortality, permanent habitat loss, or lowered reproductive success for special-status plants or animals.

Socio-Economic Considerations

Solid waste disposal facilities shall be located only in areas designated or authorized for solid waste facilities in an applicable city or county general plan. (Public Resources Code [PRC], Section 41702[b].)

The land uses authorized in the applicable city or county general plan for lands adjacent to or near the area reserved for development of a new or expanded solid waste disposal facility shall be compatible with the establishment of the solid waste facility. (PRC Section 41702[c].)

Landfills shall only be located in areas of sufficient size and potential future disposal

Socio-Economic Considerations
(Continued)

capacity to provide a minimum 15 years of combined permitted disposal capacity.

Preference shall be given to sites where the design and operation of the proposed new or expanded solid waste disposal facility can promote useful post-closure activities.

Preference shall be given to proposed disposal sites with adequate supply of low permeability soils available for use as liner and cover material.

New or expanded solid waste disposal sites shall be located further than 10,000 feet from airport runways used by turbojet aircraft and further than 5,000 feet from airport runways used solely by piston-type aircraft. (40 CFR, Part 258, Subpart B, Section 258.10.)

Legal Considerations

New or expanded disposal facilities shall be required at all times to be in compliance with applicable federal, state, and local statutes, permits, minimum operating standards, and monitoring requirements. This includes, but is not limited to, the requirements of the California Integrated Waste Management Board, Regional Water Quality Control Boards, regional air pollution control districts, applicable local jurisdictions, and all utilities, service districts, or agencies which have jurisdiction over the installation of disposal site improvements.

C. PROCEDURES TO CONFIRM USAGE OF SITING CRITERIA

As required by CCR, Title 14, Section 18756(b), the process by which Solano County can confirm that the criteria for siting a new or expanded solid waste disposal facility is included as part of its solid waste disposal facility siting process is as follows. The solid waste facility siting process in Solano County is one in which the private sector is the driving force and the public sector has primarily an oversight role. The public sector determines whether a proposed solid waste disposal site ought to be permitted and the terms and conditions of local agency approval of the proposed solid waste disposal facility. The private sector initiates the siting process by selecting a site which it wishes to develop as a solid waste disposal facility and then by requesting a local land use permit for the waste disposal facility site. An agency of the public

sector, usually a local planning commission, then prepares a CEQA environmental document to identify whether the proposed siting of a solid waste disposal facility would generate significant environmental impacts and whether there are measures which could be taken to mitigate any significant impacts. On the basis of this environmental review, the local planning commission decides whether to approve the proposed facility and the terms and conditions of site approval.

Where the solid waste disposal facility siting criteria discussed in this chapter enter into the process in Solano County for selecting sites for development as waste disposal facilities is at the environmental review stage of site approval. The siting criteria are considered to be significance criteria for determining whether a proposed solid waste disposal facility will significantly impact upon the project environment. For example one solid waste facility siting criterion is that new or expanded landfills shall not be sited where there would be loss or lowered reproductive success for special-status plants or animals resulting from project development. If the environmental review for a proposed solid waste facility showed that with project development such a loss would occur, the environmental document would note this as a significant adverse impact and require either the implementation of mitigation measures to reduce the impact to a less-than-significant level or a finding that this would be an unavoidable adverse impact.

To confirm that the siting criteria for solid waste disposal facility sites are implemented through the environmental review process, the County will require that a proposed solid waste disposal facility site be found in conformance with the Countywide Siting Element siting criteria and that a failure of a proposed solid waste disposal facility site to comply with the Countywide Siting Element siting criteria will constitute a significant adverse impact.

D. SITING ELEMENT APPROVAL

California law requires the Countywide Siting Element to be approved by the county and a majority of the cities within the county which contain a majority of the population of the incorporated area of the county (PRC Section 41721). The Siting Element Guidelines further require the Siting Element to include a resolution from each jurisdiction approving or disapproving the Siting Element, and a record of any jurisdiction failing to act on the Siting Element (CCR Section 18756[c]). These documents will be provided in the final version of this Countywide Siting Element.

VI. LOCATION AND DESCRIPTION OF PROPOSED NEW AND EXPANDED FACILITIES

A. INTRODUCTION

The Siting Element Guidelines require a Siting Element to include a description of each proposed new solid waste disposal facility and of each proposed expansion of an existing solid waste disposal facility. The information required for these discussions includes the type of facility, location, size, volumetric capacity of the facility, life expectancy, expansion options, and post-closure uses. Also required is one or more maps indicating the location of each proposed new or expanded solid waste disposal facility and adjacent and contiguous parcels. The chapter also discusses how any proposed new or expanded solid waste disposal facilities will affect Solano County's ability to achieve and maintain 15 years of permitted disposal capacity and whether the development of new or expanded landfill sites is consistent with achievement of the mandated 25 and 50% waste diversion goals.

B. PROPOSED FACILITIES

In Solano County, the only new or expanded landfill development currently proposed is an expansion of the Potrero Hills Landfill onto a 210-acre parcel next to the eastern boundary of the existing Potrero Hills Landfill site. Potrero Hills Landfill, Inc. (PHLF), has purchased this property with the objective of extending landfilling activities onto this property once the present waste disposal facility has reached capacity. A preliminary analysis of the suitability of the 210-acre site for landfill expansion was prepared by Solano County in 1993 (Jones & Stokes, 1993) and, as part of the Report of Disposal Site Information (RDSI) for the existing landfill (Potrero Hills Landfill, 1993), a conceptual landfill design for the expansion site was also prepared. When PHLF decides to move forward with its proposed landfill expansion, additional CEQA environmental analysis will be required. A part of this analysis will include a siting criteria evaluation to determine whether the proposed landfill expansion conforms to the Solano County Countywide Siting Element solid waste disposal facility siting criteria. Available information on this project is summarized below in Table VI.1, and the location of the proposed PHLF expansion site is shown in Figure VI-1.

C. RELATIONSHIP TO AB 939 REQUIREMENTS

DISPOSAL CAPACITY FOR 15-YEAR PLANNING PERIOD

As indicated in Chapter II, there is sufficient remaining capacity in disposal sites receiving Solano County waste to satisfy the County and its cities' waste disposal needs for the 15-year planning period, 1995-2010. The extent of remaining waste disposal capacity after 2010, however, would depend on the rate of landfilling at disposal sites receiving the wastes of Solano County's jurisdictions and could be quite limited if imports of waste to landfills in Solano County are high (See Table III.1, footnote 5). If PHLF expands its landfill onto the adjacent 210-acre parcel, the remaining waste disposal capacity of the PHLF site would be increased and

VI. Location and Description of Proposed New and Expanded Facilities

would enable Solano County and its cities to provide the mandated minimum 15 years of waste disposal capacity for a much longer period of time.

MANDATED WASTE DIVERSION

Potrero Hills Diversion Facilities

Expansion of the PHLF would be consistent with the 25 and 50% waste diversion requirement. The PHLF currently salvages and recycles asphalt, concrete, newspaper, and ferrous metals, and an expansion of landfill salvaging and recycling at County landfills is identified as a selected program for implementation in the SRREs of every Solano County jurisdiction (Summary Plan, Table 4-2). Furthermore, the PHLF is also seeking approval for development of a large-scale composting operation which could process up to 219 tons per day of yard, wood, and stable wastes (Summary Plan, p. IV-19). These waste diversion activities would continue at the existing PHLF site and, as appropriate, would be included in the development of the landfill expansion site. All of these activities would divert wastes from landfill disposal and would contribute to the achievement of waste diversion goals.

B&J Diversion Facilities

Existing and proposed addition of diversion facilities at the B&J Landfill are consistent with the 25 and 50% diversion requirements. The B&J Dropbox Sanitary Landfill currently salvages and recycles brush and wood, cement and other inerts, white goods, and tires. In addition, B&J is planning to build a composting facility that is expected to be permitted in 1995. It will be a large-scale composting operation receiving yard waste and wood waste to be co-composted with sewage sludge. The process will include chipping material and composting in windrows and an aerated static pile during winter months. The facility is expected to receive 80 to 100 tons per day of greenwaste. The facility is expected to divert 16.6% of waste currently landfilled from B&J's service area. The participating jurisdictions include the Cities of Dixon, Vacaville, and the surrounding unincorporated County.

B&J has proposed building a Material Recovery Facility at the landfill. The current proposal is to have the MRF operational by the year 2000 and to handle a daily throughput of 500 tons. The facility would process source separated recyclables from commercial, industrial, and residential customers in Vacaville, Dixon, and the surrounding unincorporated County. This facility is not described in the NDFEs for the County, Vacaville, or Dixon, and, like the proposed composting facility, has not gone through environmental review or permitting procedures.

VI. Location and Description of Proposed New and Expanded Facilities

TABLE VI.1: POTRERO HILLS EXPANSION FACT SHEET

TYPE	The proposed expansion would be a lateral expansion of the existing Potrero Hills Landfill (PHLF) onto a 210-acre parcel adjacent to the eastern boundary of the existing site. The landfill would have the same Class III Waste Management Unit classification as the existing PHLF.
LOCATION	The proposed expansion site is located immediately east of and adjacent to the existing permitted area of the PHLF.
SIZE	The proposed landfill expansion site is 210 acres; approximately two-thirds of the site will comprise the disposal site footprint (the area where landfill operations will occur). The remaining acreage will be used for access and perimeter buffer area.
CAPACITY	The capacity of the proposed expansion area has not been determined, but is anticipated to be in the range of 12 to 18 million cubic yards.
LIFE EXPECTANCY	Life expectancy of the proposed expansion depends on the final design capacity, the rate of fill, and operational parameters such as compaction density and refuse:soil ratio. If PHLF's application to increase daily waste receipts is approved, if the landfill receives the maximum permitted tonnage, if the design capacity is at the lower end of the anticipated range (12 million cubic yards), and if operational parameters are similar to those of the existing landfill, then site life of the expansion area might be as little as nine years.

(Continued)

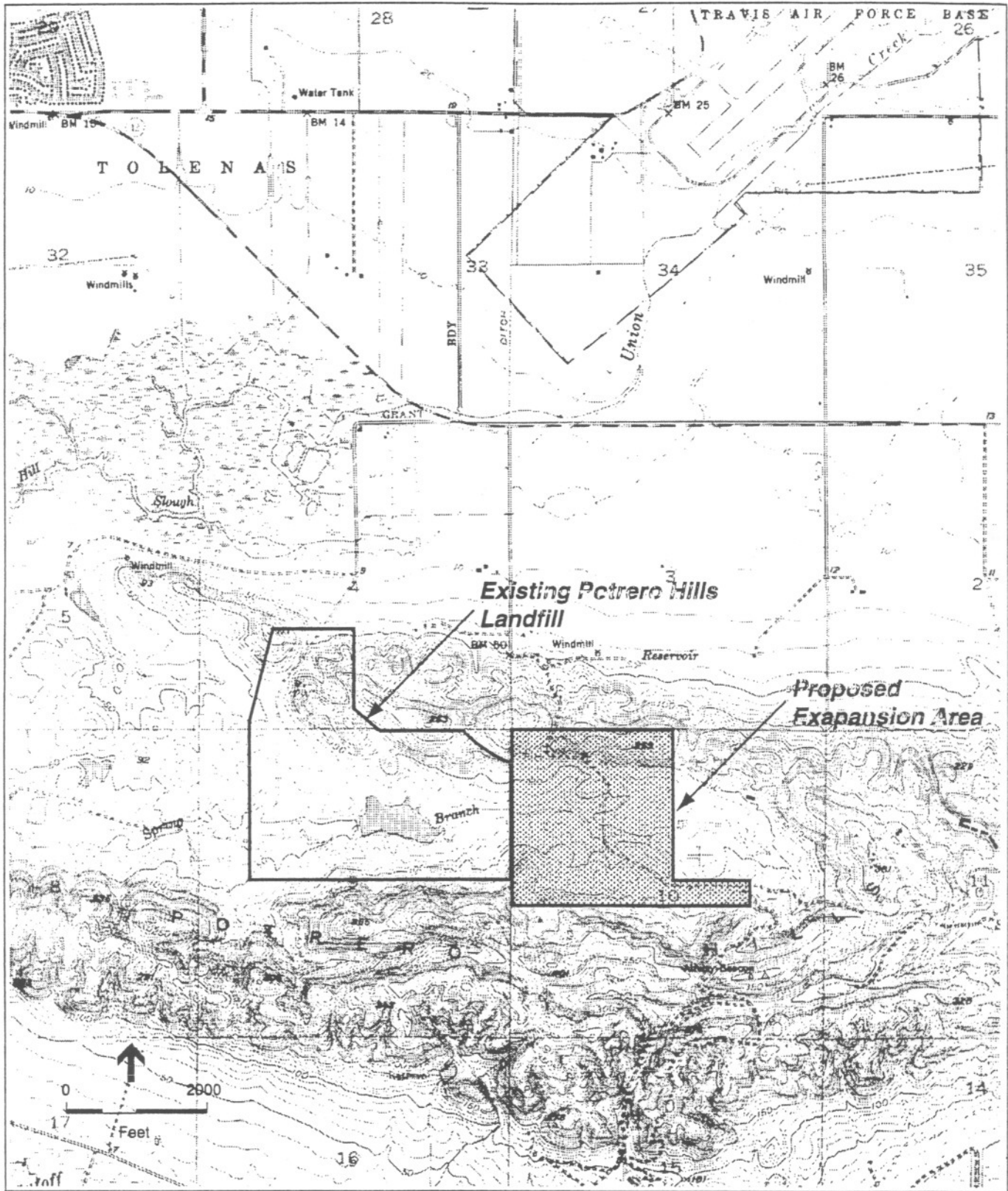
TABLE VI.1: POTRERO HILLS EXPANSION FACT SHEET (Continued)

EXPANSION OPTIONS

No further expansion of the PHLF is proposed; however, a sister entity has purchased an additional 430 acres located to the southeast of the existing landfill. This area is not proposed for landfilling; the intent of the purchase is to control future use.

FUTURE LAND USE

Future land use for the existing landfill is open space and a Resource Recovery Zone for composting and processing of recyclable and compostable materials; these are likely future land uses for the proposed expansion area as well.



SOURCE: Potrero Hills Landfill RDSI, August 1992

Solano Co. Siting Element / 940527 ■

Figure VI-1
 Proposed Expansion of
 Potrero Hills Landfill

VII. GENERAL PLAN CONSISTENCY

A. INTRODUCTION

This chapter indicates whether proposed new landfills or expansions of existing landfills are consistent with county or city general plans. As noted in the previous chapter, the only planned new or expanded facility is a planned expansion of the Potrero Hills Landfill in unincorporated Solano County.

B. PROPOSED SITE CONSISTENCY WITH COUNTY GENERAL PLAN

As indicated in the previous chapter, Potrero Hills Landfill has proposed an expansion of the existing landfill. As indicated in Chapter III, the expansion is not required to ensure 15 years of disposal capacity at this time. The existing landfill is designated as a solid waste disposal site under the Solano County General Plan.

**VIII. SOLID WASTE DISPOSAL STRATEGIES WHEN SITES FOR ADDITIONAL
CAPACITY ARE NOT AVAILABLE**

A. INTRODUCTION

The requirement to devise strategies for assuring 15 years of capacity applies only to those counties and regional agencies which are unable to demonstrate 15 years of existing capacity, and who are unable to identify sites for new disposal facilities or expansions of existing disposal facilities to ensure 15 years of disposal capacity. Since Solano County has 15 years of disposal capacity, this requirement does not apply here.

IX. SITING ELEMENT IMPLEMENTATION

A. INTRODUCTION

This chapter describes those tasks necessary for implementation of Siting Element goals, who is responsible for implementation, the schedule for implementation of these tasks, and funding sources for implementation. Tasks, responsible agencies, schedules, and revenue sources are presented in Table IX.1.

TABLE IX.1: SITING ELEMENT GOALS AND IMPLEMENTATION

<u>GOAL/TASK</u>	<u>RESPONSIBLE PARTY</u>	<u>IMPLEMENTATION SCHEDULE</u>	<u>REVENUE SOURCES</u>
Goal: Implement IWM plan which maximizes diversion and provides for environmentally safe land disposal of residue.			
Maximize diversion	See Summary Plan and SRREs	See Summary Plan and SRREs	See Summary Plan and SRREs
Ensure compliance of landfill design and operations with applicable local, state, and federal requirements	County Division of Environmental Health (as LEA) and the CIWMB	Ongoing	Landfill permit fees
Goal: Provide additional landfill capacity through expansion of B&J and Potrero Hills landfills.			
Issuance of Solid Waste Facility Permit for B&J expansion	County Division of Environmental Health and the CIWMB	By end of 1995	Permit application fees
<u>Potrero Hills Landfill Expansion:</u>			
Determine CIWMP consistency	Planning Commission	T.B.D.	Existing staff time only
Determine General Plan consistency	Planning Commission	T.B.D.	General fund
Conduct environmental review of facility	Solano County Department of Environmental Management	T.B.D.	Permit application fees
Secure funding for facility construction	Potrero Hills Landfill, Inc.	T.B.D.	T.B.D.
Facility final design	Potrero Hills Landfill, Inc.	T.B.D.	T.B.D.
Issue Solid Waste Facility Permit	County Division of Environmental Health and the CIWMB	T.B.D.	Permit application fees
Facility Construction	Potrero Hills Landfill, Inc.	T.B.D.	T.B.D.
Start-up	Potrero Hills Landfill, Inc.	T.B.D.	T.B.D.
Full operation	Potrero Hills Landfill, Inc.	T.B.D.	Landfill tipping fees

(Continued)

TABLE IX.1: SITING ELEMENT GOALS AND IMPLEMENTATION (Continued)

<u>GOAL/TASK</u>	<u>RESPONSIBLE PARTY</u>	<u>IMPLEMENTATION SCHEDULE</u>	<u>REVENUE SOURCES</u>
Goal: Provide additional needed landfill capacity through export to other Counties and States with sufficient capacity.			
Secure export agreement for City of Vallejo wastes	City of Vallejo and the South Napa Waste Management Authority	Completed	Tipping fees at American Canyon Landfill and Transfer Facility
Ensure adequate capacity at Keller Canyon Landfill for City of Benicia wastes	Pleasant Hill Bayshore Disposal/BFI; City of Benicia; Contra Costa County Community Development Department	Completed	T.B.D.
Goal: Develop appropriate recycling and composting programs at the County's landfills.			
Develop programs for increasing salvage of recyclable materials at landfills	B&J Landfill and Potrero Hills Landfill, Inc.	See Summary Plan and SRREs	See Summary Plan and SRREs
Develop composting programs at landfills	B&J Landfill and Potrero Hills Landfill, Inc.	See Summary Plan	See Summary Plan and SRREs
Goal: Continue to support existing landfill load check programs.			
Continue load checking program at B&J Drop Box Landfill	B&J Drop Box Sanitary Landfill	Ongoing	Tipping fees
Continue load checking program at Potrero Hills Landfill	Potrero Hills Landfill, Inc.	Ongoing	Tipping fees
Program oversight	Solano County Division of Environmental Health	Ongoing	Landfill permit fees

X. REFERENCES

- Brown and Caldwell, Consultants, B & J Landfill Master Development Plan, Draft Environmental Impact Report. Prepared for Solano County Department of Environmental Management, December 1992.
- California Regional Water Quality Control Board, Central Valley Region, Waste Discharge Requirements for B & J Dropbox Sanitary Landfill. Order No. 89-178, September 22, 1989.
- California Regional Water Quality Control Board, San Francisco Bay Region, Updated Waste Discharge Requirements for the Potrero Hills Landfill, Inc. Order No. 93-072, July 21, 1993.
- Contra Costa County Community Development Department, Contra Costa Countywide Integrated Waste Management Plan, May 1993.
- Jones and Stokes Associates, Draft Environmental Impact Report for an Amendment to the Potrero Hills Landfill Land Use Permit, Mash Development Permit, and Revision to the Solid Waste Facilities Permit. Prepared for Solano County Department of Environmental Management, September 1993(a).
- Jones and Stokes Associates, Constraints Analysis for a Proposed Landfill Expansion on a 210-Acre Site Adjacent to the Potrero Hills Landfill. Submitted to Solano County Department of Environmental Management, September 1993(b).
- Morck, Rick, Vice President for Engineering, Regional Disposal Company, personal communication, June 26 1995.
- Solano County Department of Environmental Management, Solano County Solid Waste Management Plan Revision, November 1989.
- Solano County Department of Environmental Management, Division of Environmental Health, Operating Permit for Facilities Receiving Solid Waste, Facility/Permit Number 48-AA-075 for the Potrero Hills Landfill. Issued December 15, 1989.
- Solano County Department of Environmental Management, Division of Environmental Health, Operating Permit for Facilities Receiving Solid Waste, Facility/Permit Number 48-AA-0002, for the B & J Dropbox Sanitary Landfill. Issued July 28, 1992.
- Solano County Department of Environmental Management, Land Use Permit No. U-91-28/RP-91-04, B & J Dropbox, Inc., to increase daily and annual waste receipts, expand the landfill capacity. . . , May 20, 1993.

Solano County Department of Environmental Management, Stipulated Agreement to Temporarily Accept Municipal Solid Waste at the B & J Dropbox Sanitary Landfill in Excess of Permitted Tonnages, August 10, 1993.

Solano County Department of Environmental Management, Marsh Development Permit No. MD-88-09; Use Permit No. U-88-33; and Reclamation Plan No. RP-84-02 (Revised), for Potrero Hills Landfill, Inc., dated October 24, 1989.

Waxdeck, Joel, P.E., Potrero Hills Landfill, Inc., letter to Lidiya Kvashina, Solano County Department of Environmental Management, Subject: Updated Potrero Hills Landfill Site Life Projections, December 2, 1994.

Department of Environmental Health Services
ENVIRONMENTAL HEALTH SERVICES

**APPENDIX A: DETERMINATION BY THE LOCAL TASK FORCE OF REMAINING
LANDFILL CAPACITY IN 1990**

Department of
ENVIRONMENTAL MANAGEMENT



601 TEXAS STREET
FAIRFIELD, CALIFORNIA 94533-6376

- PLANNING AND ZONING (707) 429-1611
- ENVIRONMENTAL HEALTH 429-1611
- BUILDING INSPECTION 429-6434

June 12, 1990

Peter Friesen, Chairman
Integrated Waste Management Task Force
Solano County
Fairfield, CA 94533

Dear Mr. Friesen:

As requested, the estimated site life for each of the three operating landfills within the County are:

B & J Drop Box

A review of their 1982 Operations Plan, 1988 Report of Disposal Site Information (RDSI), 1990 Site Review, and 1990 RDSI, indicates that the site life ranges from 28 to over 30 years.

Potrero Hills

Their 1989 RDSI indicates over 35 years of site capacity.

Rio Vista Landfill

A review of Rio Vista's RDSI and other supporting documents indicates a site life of approximately 15 years.

Should you have any further questions, please contact me at (707) 421-6770.

Sincerely,

Clifford K. Covey, REHS, CHMM
Program Manager, Environmental Health

cc: Cynthia Copeland, Senior Planner

CKC/cc
ecc611

**APPENDIX B: RESOLUTIONS OF THE COUNTY BOARD OF SUPERVISORS AND
CITY COUNCILS ADOPTING THE COUNTYWIDE SITING ELEMENT AND
SUMMARY PLAN**

Resolution No. 96-32

RESOLUTION OF THE BOARD OF SUPERVISORS OF SOLANO COUNTY
ADOPTING THE FINAL DRAFTS OF THE SOLANO COUNTY SITING ELEMENT
AND SUMMARY PLAN AS COMPONENTS OF THE COUNTYWIDE INTEGRATED
WASTE MANAGEMENT PLAN, AND THE DRAFT NEGATIVE DECLARATION

WHEREAS, the people of the State of California have enacted the California Integrated Waste Management Act (Sher, 1989) which, as amended, directs cities, counties and regional agencies to prepare a Countywide or Regionwide Integrated Waste Management Plan; and

WHEREAS, the Solano County Countywide Integrated Waste Management Summary Plan, or Siting Element, has been prepared in accordance with the statutory requirements of the California Public Resources Code (PRC), Sections 41750 - 41751; and

WHEREAS, the Solano County Countywide Siting Element, or Siting Element, has been prepared in accordance with the statutory requirements of the California Public Resources Code (PRC), Sections 41700 - 41721.5; and

WHEREAS, the Solano County Environmental Review Committee has determined that the approval of the Siting Element and Summary Plan qualifies for a Negative Declaration based on addressed mitigation; and

WHEREAS, on December 12, 1995, the Board of Supervisors set a public hearing for January 23, 1996, to consider adoption of the Final Drafts of the Solano County Siting Element and Summary Plan; and

WHEREAS, on January 23, 1996, the Board of Supervisors held a duly noticed public hearing, considered the Negative Declaration and public comments thereon prior to action on the project and finds that the Negative Declaration is adequate, and there is no evidence that the project will have a significant impact on the environment; and

WHEREAS, on January 23, 1996, the Board of Supervisors held a duly noticed public hearing on the Final Drafts of the Solano County Siting Element and Summary Plan, heard public testimony, and considered the recommendations of staff.

BE IT, THEREFORE, RESOLVED that the Board of Supervisors of Solano County adopts the Draft Negative Declaration, and the Final Drafts of the Solano County Siting Element and Summary Plan, Components of the Countywide Integrated Waste Management Plan.

I, LINDA TERRA, Clerk of the Board of Supervisors of the County of Solano, State of California, do hereby certify that the foregoing resolution was introduced, passed and adopted by said Board at the regular meeting thereof held on January 23, 1996.

On the motion of Supervisor Kondylis and seconded by Supervisor Gojkovich, this resolution was adopted by the following vote:

AYES: Supervisors Carroll, Gojkovich, Kondylis, Schlenker
and Chairman Thomson

NOES: Supervisors None

ABSTAIN: Supervisors None

ABSENT: Supervisors None

WITNESS my hand and seal of said Board this 23rd day of January, 1996.

LINDA TERRA
Clerk of the Board of Supervisors

By: Linda Terra

CITY OF DIXON
RESOLUTION NO. 9623

RESOLUTION ADOPTING THE FINAL DRAFTS OF THE
SOLANO COUNTY SITING ELEMENT AND SUMMARY PLAN,
AND THE DRAFT NEGATIVE DECLARATION

WHEREAS, the people of the State of California have enacted the California Integrated Waste Management Act (Sher, 1989) which, as amended, directs cities, counties, and regional agencies to prepare a Countywide or Regionwide Integrated Waste Management Plan; and

WHEREAS, the Solano County Countywide Integrated Waste Management Summary Plan, or Summary Plan, has been prepared in accordance with the statutory requirements of the California Public Resources Code (PRC) Sections 41750-41751; and

WHEREAS, the Solano County Countywide Siting Element, or Siting Element, has been prepared in accordance with the statutory requirements of the California Public Resources Code (PRC) Sections 41700-41721.5; and

WHEREAS, the Solano County Environmental Review Committee has determined that the approval of the Siting Element and Summary Plan qualifies for a Negative Declaration based on addressed mitigation; and

WHEREAS, a public hearing has been held with proper notice.

NOW, THEREFORE, BE IT RESOLVED, that the City Council of the City of Dixon adopts the Final Drafts of the Solano County Siting Element and Summary Plan, Components of the Countywide Integrated Waste Management Plan, and the Draft Negative Declaration.

PASSED AND ADOPTED ON THIS 12TH DAY OF MARCH, 1996, BY THE FOLLOWING VOTE:

AYES: CROSS, SALABER, FERRERO, MISTLER, ERICKSON

NOES: NONE

ABSENT: NONE

ATTEST:

Linda Crisman
City Clerk

reso\finaldrft.jk

[Signature]
Mayor

CERTIFIED AS TRUE COPY

OF Res. No. 9623

March 13, 1996

DATE CERTIFIED
Linda Crisman
CITY CLERK, CITY OF DIXON

CITY OF FAIRFIELD

RESOLUTION 96-97

A RESOLUTION ADOPTING THE FINAL DRAFTS OF THE
SOLANO COUNTY SITING ELEMENT AND SUMMARY PLAN,
COMPONENTS OF THE COUNTYWIDE INTEGRATED WASTE MANAGEMENT PLAN

WHEREAS, the people of the State of California have enacted the California Integrated Waste Management Act (Sher, 1989) which, as amended, directs cities, counties, and regional agencies to prepare a Countywide or Regionwide Integrated Waste Management Plan; and

WHEREAS, the Solano County Countywide Integrated Waste Management Summary Plan, or Summary Plan, has been prepared in accordance with the statutory requirements of the California Public Resources Code (PRC) Sections 41750-41751; and

WHEREAS, the Solano County Countywide Siting Element, or Siting Element, has been prepared in accordance with the statutory requirements of the California Public Resources Code (PRC) Sections 41700-41721.5; and

WHEREAS, the Solano County Environmental Review Committee has determined that the approval of the Siting Element and Summary Plan qualifies for a Negative Declaration based on addressed mitigation; and

WHEREAS, a public hearing has been held with proper notice.

NOW, THEREFORE, BE IT RESOLVED that the City Council of the City of Fairfield adopts the Final Drafts of the Solano County Siting Element and Summary Plan, Components of the Countywide Integrated Waste Management Plan, and the Draft Negative Declaration.

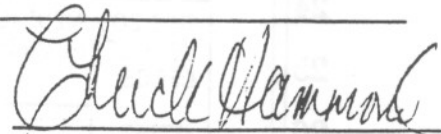
PASSED AND ADOPTED this 21st day of May, 1996 by the following vote:

AYES: Councilmembers LESSLER/MacMILLAN/O'REGAN/PETTYGROVE/HAMMOND

NOES: Councilmembers None

ABSENT: Councilmembers None

ABSTAIN: Councilmembers O'Regan



Mayor

Attest:


City Clerk

1
2
3
4
5
6
7
8
9
10
11
12
13
14
15
16
17
18
19
20
21
22
23
24
25
26
27
28

RESOLUTION NO. 96-12

A RESOLUTION OF THE SUISUN CITY COUNCIL ADOPTING THE SUMMARY PLAN AND THE SITING ELEMENT OF THE SOLANO COUNTY COUNTYWIDE INTEGRATE WASTE MANAGEMENT PLAN AND ADOPTING THE NEGATIVE DECLARATION.

WHEREAS, The California Integrated Waste Management Act of 1989, as amended, directs cities, counties and regional agencies to prepare a Countywide or Regionwide Integrated Waste Management Plan; and

WHEREAS, this Plan must contain the Countywide Integrated Waste Management Summary Plan and the Countywide Siting Element; and

WHEREAS, a Negative Declaration has been prepared by the Solano County Department of Environmental Management and adopted by the Solano County Environmental Review Committee; and

WHEREAS, a Public Hearing has been held to receive evidence and reports relative to this resolution.

NOW, THEREFORE, BE IT RESOLVED THAT by the City Council of the City of Suisun City that the Council adopts the Negative Declaration and the Summary Plan and Siting Element of the Solano County Countywide Integrated Waste Management Plan.

PASSED AND ADOPTED at a regular meeting of the City Council of the City of Suisun City, duly held on Tuesday the 20th day of February, 1996 by the following vote:

AYES: Councilmembers Day, Rundlett, Sanchez, Segala, Spering
NOES: Councilmembers None
ABSENT: Councilmembers None
ABSTAIN: Councilmembers None

WITNESS my hand and the seal of said City this 20th day of February, 1996.

THIS DOCUMENT IS A TRUE AND CORRECT COPY OF THE ORIGINAL ON FILE IN THIS OFFICE.
ATTEST: 2-22-96
SHARON M. VENTURA, City Clerk and ex-officio Clerk of the Suisun City Council in and for the said City.
By: Sharon Ventura City Clerk

Sharon Ventura
SHARON VENTURA, City Clerk

RESOLUTION NO. 96-5

RESOLUTION ADOPTING THE FINAL DRAFTS OF THE SOLANO COUNTY SITING ELEMENT AND SUMMARY PLAN, COMPONENTS OF THE COUNTYWIDE INTEGRATED WASTE MANAGEMENT PLAN, AND THE DRAFT NEGATIVE DECLARATION

WHEREAS, the people of the State of California have enacted the California Integrated Waste Management Act (Sher, 1989) which, as amended, directs cities, counties, and regional agencies to prepare a Countywide or Regionwide Integrated Waste Management Plan; and,

WHEREAS, the Solano County Countywide Integrated Waste Management Summary Plan, or Summary Plan, has been prepared in accordance with the statutory requirements of the California Public Resources Code (PRC) Sections 41750-41751; and,

WHEREAS, the Solano County Countywide Siting Element, or Siting Element, has been prepared in accordance with the statutory requirements of the California Public Resources Code (PRC) Sections 41700-41721.5; and,

WHEREAS, the Solano County Environmental Review Committee has determined that the approval of the Siting Element and Summary Plan qualifies for a Negative Declaration based on addressed mitigation; and,

WHEREAS, a public hearing has been held with proper notice.

NOW, THEREFORE, BE IT RESOLVED that the City Council of the City of Rio Vista adopts the Final Drafts of the Solano County Siting Element and Summary Plan, Components of the Countywide Integrated Waste Management Plan, and the Draft Negative Declaration.

I, ANITA REINEKE, CITY CLERK OF THE CITY OF RIO VISTA and ex-officio Clerk of the City Council of said City, do hereby certify the above and foregoing to be a full, true and correct copy of a Resolution of said City Council which was regularly introduced, passed and adopted by said City Council at a regular meeting thereof, by the following vote:

AYES: COUNCILMEMBERS Bidou, Harris, Madere, Brown, Rubier
NOES: COUNCILMEMBERS None
ABSENT: COUNCILMEMBERS None

WITNESS my hand and seal of said City this 7 day of
March, 1996.

Anita Reineke
ANITA REINEKE, CMC, CITY CLERK

I certify

copy of my Anita Reineke
City Clerk

RESOLUTION NO. 1996-6

RESOLUTION ADOPTING THE FINAL DRAFTS OF THE
SOLANO COUNTY SITING ELEMENT AND SUMMARY PLAN,
COMPONENTS OF THE COUNTYWIDE INTEGRATED WASTE MANAGEMENT
PLAN, AND THE DRAFT NEGATIVE DECLARATION

WHEREAS, the people of the State of California have enacted the California Integrated Waste Management Act (Sher, 1989) which, as amended, directs cities, counties, and regional agencies to prepare a Countywide or Regionwide Integrated Waste Management Plan; and

WHEREAS, the Solano County Countywide Integrated Waste Management Summary Plan, or Summary Plan, has been prepared in accordance with the statutory requirements of the California Public Resources Code (PRC) Sections 41750-41751; and

WHEREAS, the Solano County Countywide Siting Element, or Siting Element, has been prepared in accordance with the statutory requirements of the California Public Resources Code (PRC) Sections 41700-41721.5; and

WHEREAS, the Solano County Environmental Review Committee has determined that the approval of the Siting Element and Summary Plan qualifies for a Negative Declaration based on addressed mitigation; and

WHEREAS, a public hearing has been held with proper notice.

NOW, THEREFORE, BE IT RESOLVED that the City Council of the City of Vacaville adopts the Final Drafts of the Solano County Siting Element and Summary Plan, Components of the Countywide Integrated Waste Management Plan, and the Draft Negative Declaration.

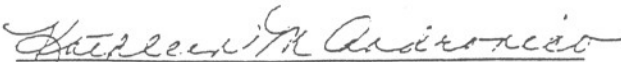
I HEREBY CERTIFY that the foregoing resolution was introduced and passed at a regular meeting of the City Council of the City of Vacaville, held on the 9th day of January 1996, by the following vote:

AYES: Councilmembers Clancy, Kahn, Kimme, Vice-Mayor Tatum and Mayor Fleming

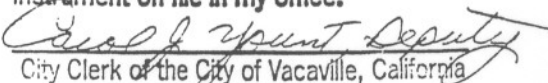
NOES: None

ABSENT: None

ATTEST


Kathleen M. Andronico, City Clerk

I hereby certify that the foregoing instrument is a true copy of the original instrument on file in my office.


Carol Spunt, Deputy
City Clerk of the City of Vacaville, California

RESOLUTION NO. 96-22 N.C.

BE IT RESOLVED by the Council of the City of Vallejo as follows:

WHEREAS, the California Integrated Waste Management Act directs each county to prepare a Countywide Integrated Waste Management Plan comprised of elements specific to each jurisdiction and elements addressing countywide integration of waste management programs and facilities; and

WHEREAS, California Public Resources Code (Sec. 41700-41721.5) and Code of Regulations (Sec. 18755-18756.7) require counties to prepare a Countywide Siting Element which describes areas that may be needed for adequate landfill capacity; and,

WHEREAS, California Public Resources Code (Sec. 41751) directs counties to prepare a Summary Plan describing significant waste management issues facing local jurisdictions and providing an overview of steps that can be taken to divert 50% of waste generated in the jurisdictions from disposal facilities by the year 2000; and

WHEREAS, the City of Vallejo and other Solano jurisdictions have already adopted Source Reduction and Recycling Element, Household Hazardous Waste Element and Non-disposal Facility Element which serve as the local segments of the countywide IWMP; and

WHEREAS, the Solano County Department of Environmental Management is the lead agency charged with developing the Siting Element and the Summary Plan for incorporation into the Countywide Integrated Waste Management Plan, and

WHEREAS, the Siting Element and Summary Plan must be adopted by a majority of cities with a majority of the countywide population prior to being submitted to the California Integrated Waste Management Board for approval; and

WHEREAS, the Final Draft Siting Element and Final Draft Summary Plan fulfills all statutory and regulatory requirements and provides a blueprint for regional cooperation that will facilitate implementation of Solano County's integrated waste management plans; now, therefore

BE IT RESOLVED, that the Vallejo City Council does hereby adopt the Solano County Integrated Waste Management Plan Siting Element and Solano County Integrated Waste Management Plan Summary Plan.

RESOLUTION NO. 96-22 N.C.
Page 2.

ADOPTED by the Council of the City of Vallejo at a regular meeting held on January 16, 1996, by the following vote:

AYES: Mayor Exline, Councilmembers Donahue, Hicks, Martin, Patchell, Stafford and Villanueva

NOES: None

ABSENT: None

/s/ Gloria Exline
GLORIA EXLINE, MAYOR

ATTEST: /s/Allison Villarante
ALLISON VILLARANTE, CITY CLERK

\iwmpadop.rso

APPENDIX C: NOTICE OF DETERMINATION

NOTICE OF DETERMINATION
TO: [Illegible]

FILED IN PUBLIC RECORDS
THE PUBLIC RECORDS SECTION

Project Name: [Illegible]
State: [Illegible]
County: [Illegible]

Project Description: [Illegible]
This is a notice of determination for the [Illegible] project located in the [Illegible] area of the County of [Illegible].

This is a notice of determination for the [Illegible] project located in the [Illegible] area of the County of [Illegible].

1. The project is located in the [Illegible] area of the County of [Illegible].
2. An Environmental Impact Statement (EIS) was prepared for the project.
3. The EIS was reviewed and approved by the [Illegible] Board of Supervisors.
4. A finding of no significant impact was made for the project.
5. Findings of no significant impact were made for the project.

This is a notice of determination for the [Illegible] project located in the [Illegible] area of the County of [Illegible].
General Public Comment Period: [Illegible]
421-5783

Date needed for filing in OIR

NOTICE OF DETERMINATION

TO: X Office of Planning and Research
1400 Tenth Street, Room 121
Sacramento, CA 95814

FROM: Department of Environmental Management
601 Texas Street
Fairfield, CA 94533

Filed in the Office of the County Clerk of
Solano County, State of California.

X County Clerk
County of Solano

this date: 2/2/96

YVONNE A. RYAN, County Clerk
Deputy
[Signature]

FILING OF NOTICE OF DETERMINATION IN COMPLIANCE WITH SECTION 21108 OR 21152 OF THE PUBLIC RESOURCES CODE.

Summary Plan & Siting Element for Countywide IWMP

Project Title

95113016

Gary Lane

(707) 421-6765

State Clearinghouse Number
(If submitted to Clearinghouse)

Lead Agency
Contact Person

Area code/telephone/extension

Solano County

Project Location (include county & APN)

Project Description: The Siting Element and Summary Plan are components of the Countywide Integrated Waste Management Plan required by Public Resources Code Sections 41700 through 41826. The Siting Element discusses landfill life and the Summary Plan summarizes and discusses programs to reduce disposal of solid waste.

This is to advise that the County of Solano has approved the above described project on

Lead Agency Responsible Agency

Jan. 23, 1996 and has made the following determinations regarding the above described project:

(date)

1. The project [will will not] have a significant effect on the environment.
2. An Environmental Impact Report was prepared for this project pursuant to the provisions of CEQA.
 Negative Declaration was prepared for this project pursuant to the provisions of CEQA.
3. Mitigation measures [were were not] made a condition of the approval of the project.
4. A Statement of Overriding Consideration [was was not] adopted for this project.
5. Findings [were were not] made pursuant to the provisions of CEQA.

This is to certify that the Final EIR with comments and responses and record of project approval is available to the General Public at the Department of Environmental Management, 601 Texas Street, Fairfield, CA 94533 (707) 421-6765.

[Signature]

February 13, 1996

Principal Planner

Signature (public agency)

Date

Title

Date received for filing at OPR:

temp\form17.tem\11 (7/20)