

Neurological Emergencies

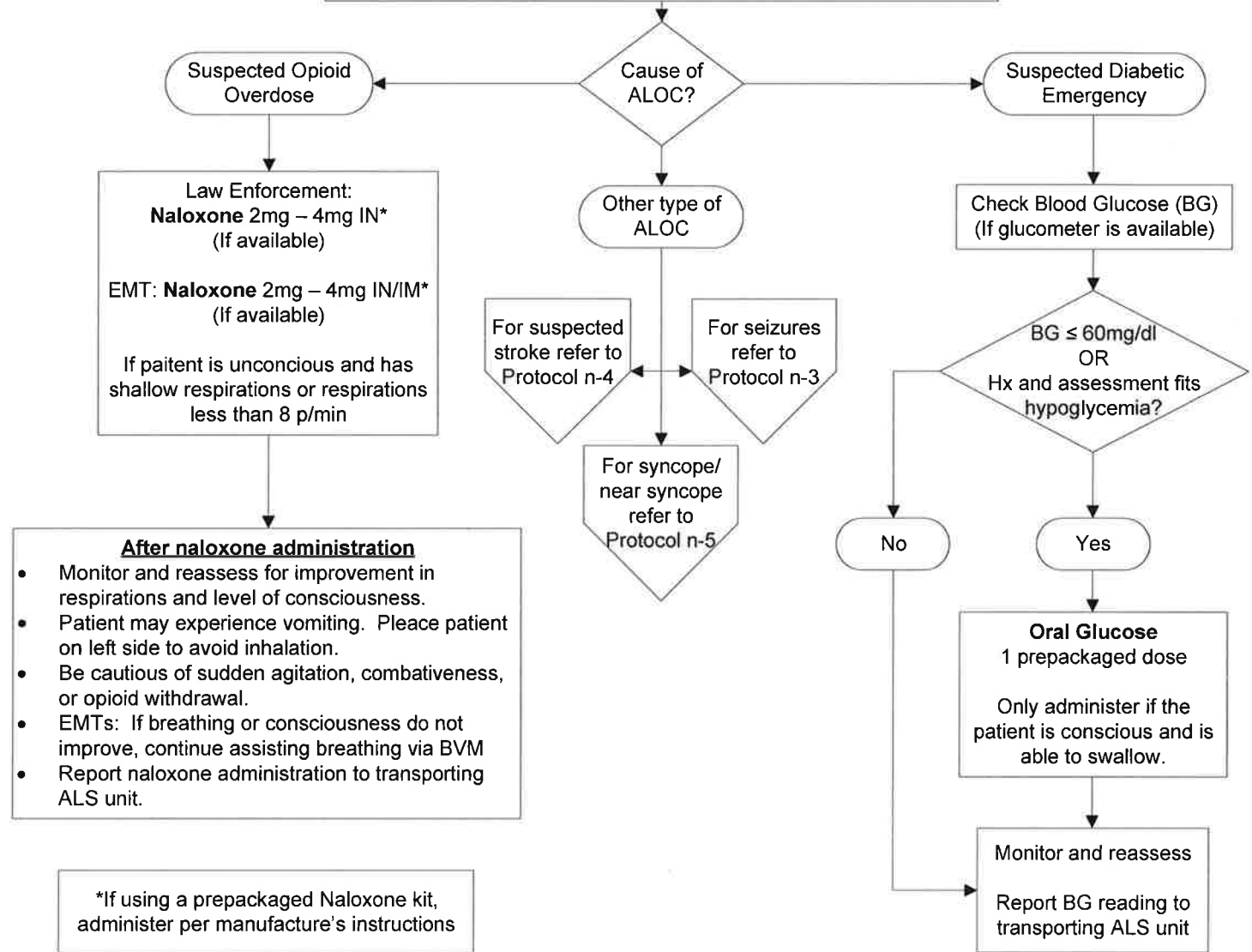
n-1 Altered Level of Consciousness (ALOC)

Priorities

- Ensure ALS response
- Determine cause of ALOC with a thorough assessment
- Obtain a complete patient history
- EMTs: ABCs

- Law Enforcement personnel must complete the initial training requirements of Solano County EMS Policy 4700 prior to administering naloxone. **Law Enforcement personnel are ONLY authorized to use the Suspected Opioid Overdose portion of this protocol.**
- EMTs must complete the initial training requirements of Solano County EMS Policy 4700 and/or 4702 prior to administering naloxone or performing finger stick blood glucose testing.
- IN medications will be administered according to Solano County EMS Protocol S-12.

EMT: Vital signs and pulse oximetry
 EMT: Oxygen – high flow
 EMT: BVM if respirations are shallow or less than 8 p/min
 EMT: OPA/NPA to secure airway if necessary
EMT: Do not use a perilyngeal airway for suspected opioid overdose or if an advanced airway has been placed
 EMT and Law Enforcement: If no pulse, start CPR



*If using a prepackaged Naloxone kit, administer per manufacture's instructions