

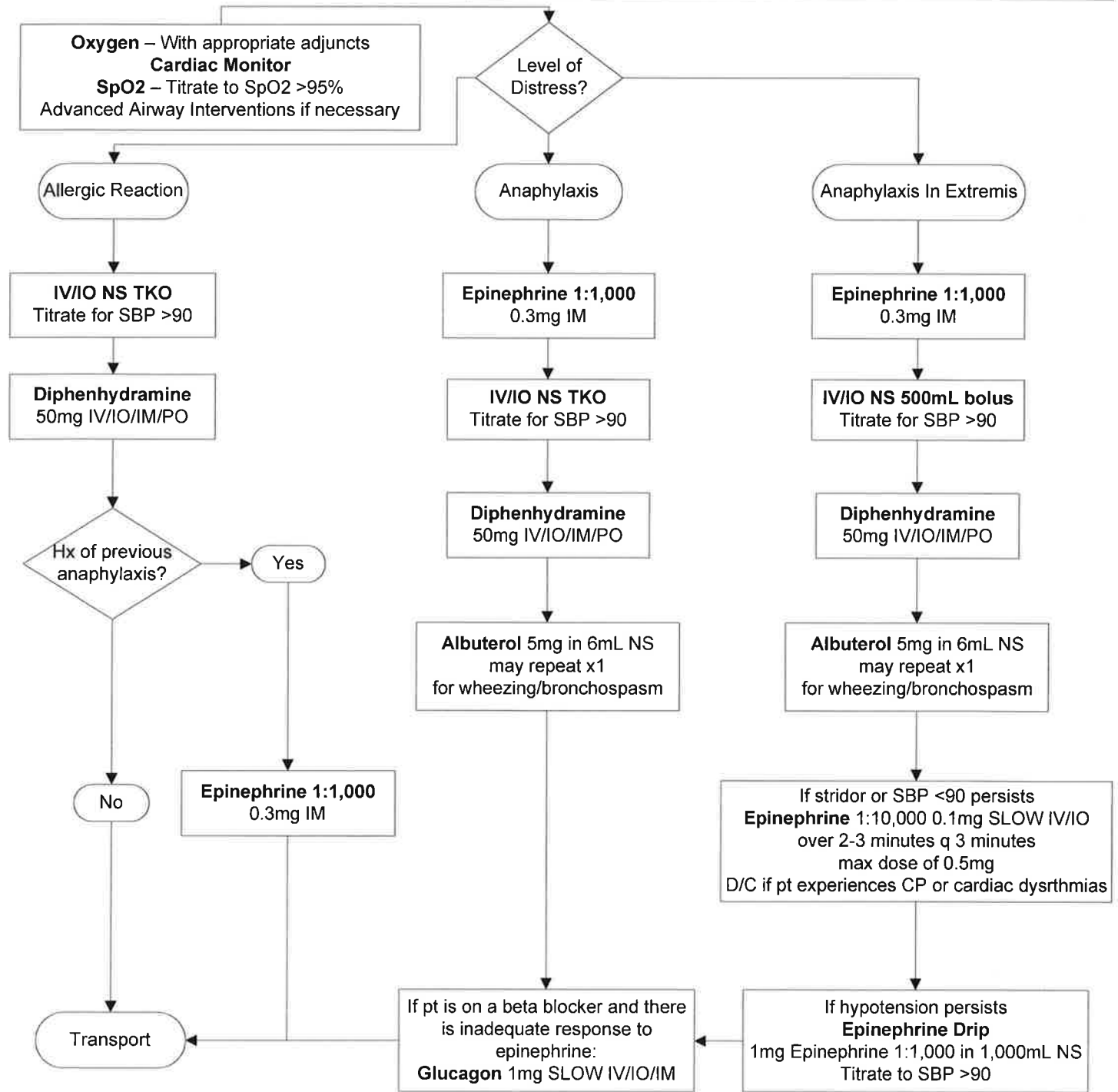
Medical Emergencies M-5 Allergic Reaction/Anaphylaxis

Priorities

Airway – stabilize using the appropriate adjuncts
 Be prepared for advanced airway interventions
 Remove antigen source if possible
 Identify level of severity of the reaction
 Early transport

Levels of severity

Allergic Reaction: Acute onset cutaneous reactions, e.g. hives, pruritus, flushing, rash, or angioedema NOT involving the airway
Anaphylaxis: One or more of the following symptoms: stridor, wheezing, hoarseness, edema involving the airway, hypotension
Anaphylaxis In Extremis: SBP <90, airway compromise, ALOC



DISRUPTED COMMUNICATIONS

In the event of a "disrupted communications" situation, Solano County Paramedics may utilize all portions of this treatment protocol without Base Hospital Contact as needed to stabilize an immediate patient.