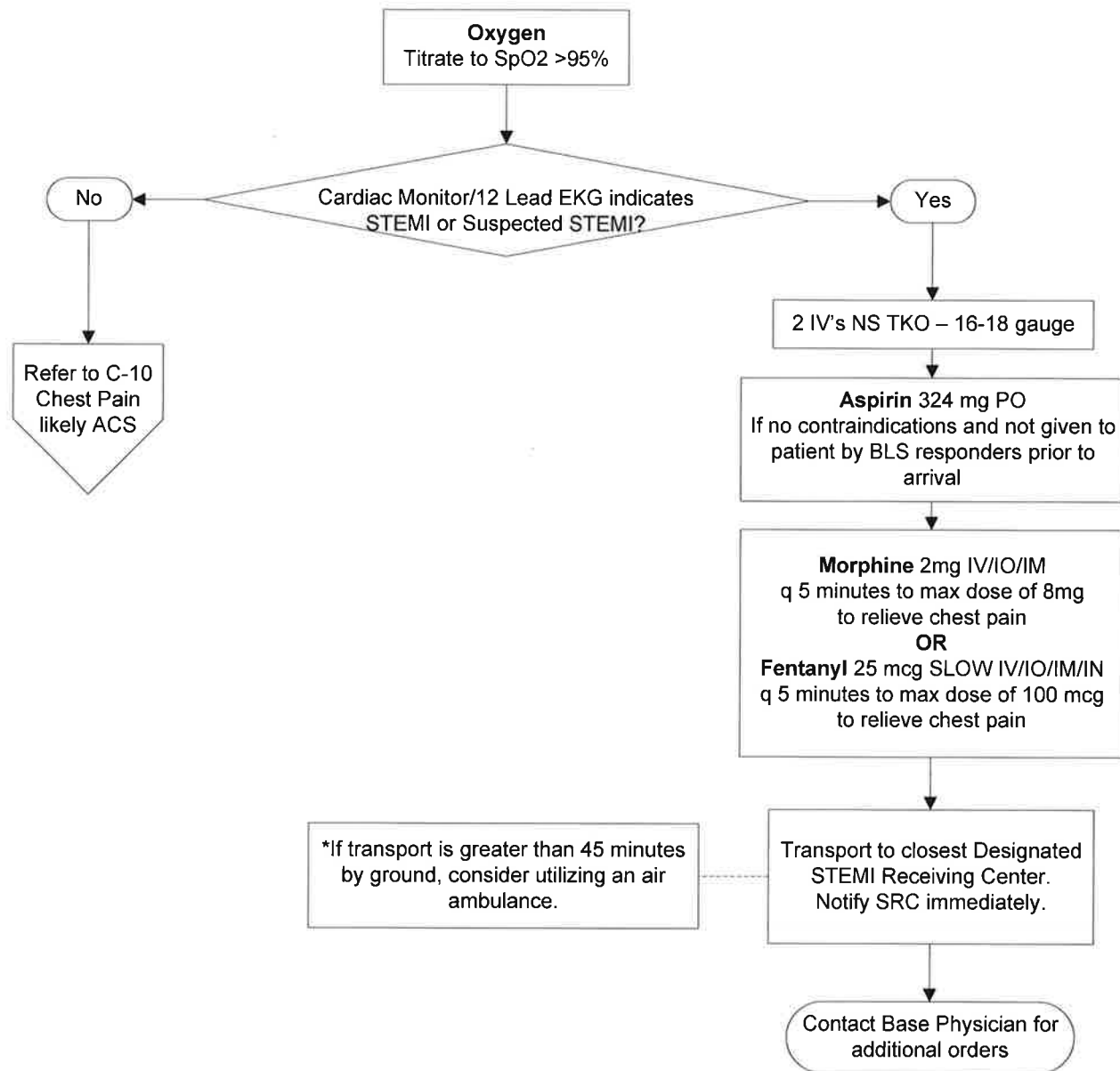


Cardiac Emergencies
C-14 Acute Coronary Syndrome (ACS) Chest Pain with
ST Segment Elevation Myocardial Infarction (STEMI)



- SOLANO EMS DESIGNATED STEMI RECEIVING CENTERS:**
- NorthBay Medical Center, Fairfield
 - Kaiser Permanente Hospital, Vallejo
 - John Muir Medical Center, Concord
 - UC Davis Medical Center, Sacramento
- Based upon the individual patient's location and possible transport times the paramedic should choose the closest Solano County Designated STEMI Receiving Center and mode of transport. (Air transport may be appropriate for certain locations.)

DISRUPTED COMMUNICATIONS
 In the event of a "disrupted communications" situation where a base hospital physician CANNOT be contacted for orders, Solano County Paramedics may not utilize the portions of this protocol requiring base physician orders AND must transport to the closest receiving facility.