

# Visioning Outcomes



*Healthy People – Healthy Community*



# Vision

- Does not have to be a written statement; it can be a graphic
- Our vision should appear on materials and products
- Can be frequently revisited

# Visioning Outcome

What Needs Changing?

- Homelessness and affordability of housing
- Education system
- Transportation and access to services
- Availability of services
- Specific rates of diseases, conditions, and outcomes
- Health inequities

# Visioning Outcome

What Would Success  
Look Like?

- Equity and equality in our County
- High quality and equitable education system with children ready for school and high graduation rates
- Safe outdoor spaces
- Improved health outcomes
- Holistic and integrated approach to medical, physical, behavioral and social health
- Empowered communities with strong partnerships

# Visioning Outcome

## What is Our Dream?

- A public health system that invests in prevention, with holistic services that are affordable and available to all
- An inclusive and accepting community with a strong educational system, available housing, and reduced poverty
- A safe and healthy Solano County that has walkable and bike-able communities, clean air, and universal access to healthy food

# Idea for a Graphic - Hands



# Idea for Graphic - Bridge



*Healthy People – Healthy Community*



# Idea for Graphic – Sun Rays





# Visioning Outcome

## Thoughts on Graphics

- Hands
- Bridge
- Sun Rays
- Other?

# Public Health System Exercise



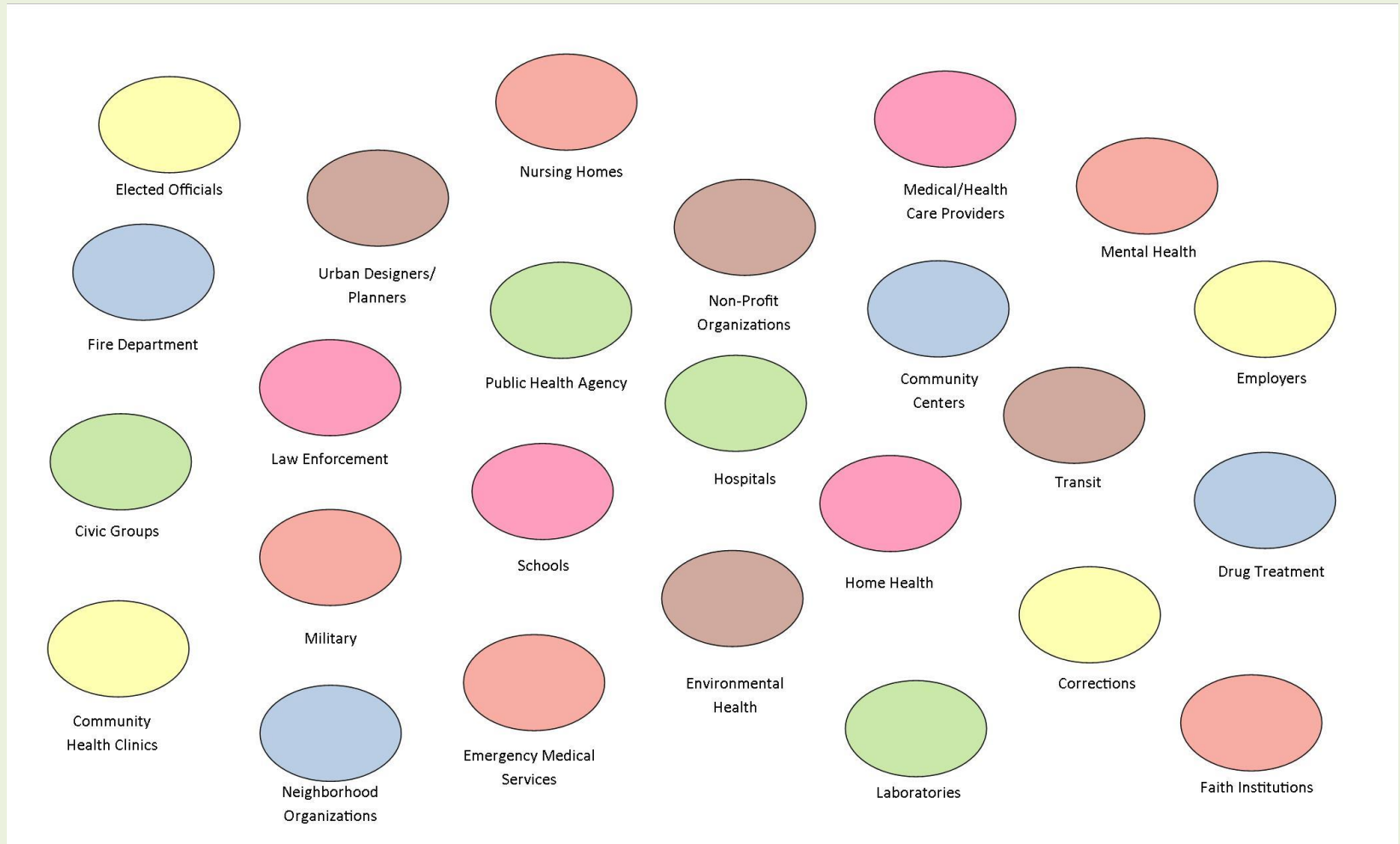
*Healthy People – Healthy Community*



# Public Health System

- All organizations and entities within the community that contribute to the public's health
- NOT just Solano Public Health
- Want representation from diverse segments of the public health system
- First step is to identify components of the system

# Public Health System



# Public Health System Exercise

## Instructions

- Please use a green dot to represent your primary affiliation and place it on the public health system diagram
- Please use a red or white dot to represent any additional affiliations that you feel you can represent
- Please take turns, by table
- When you have placed your dots, please depict your connections on your personal diagram using markers

# Local Public Health System

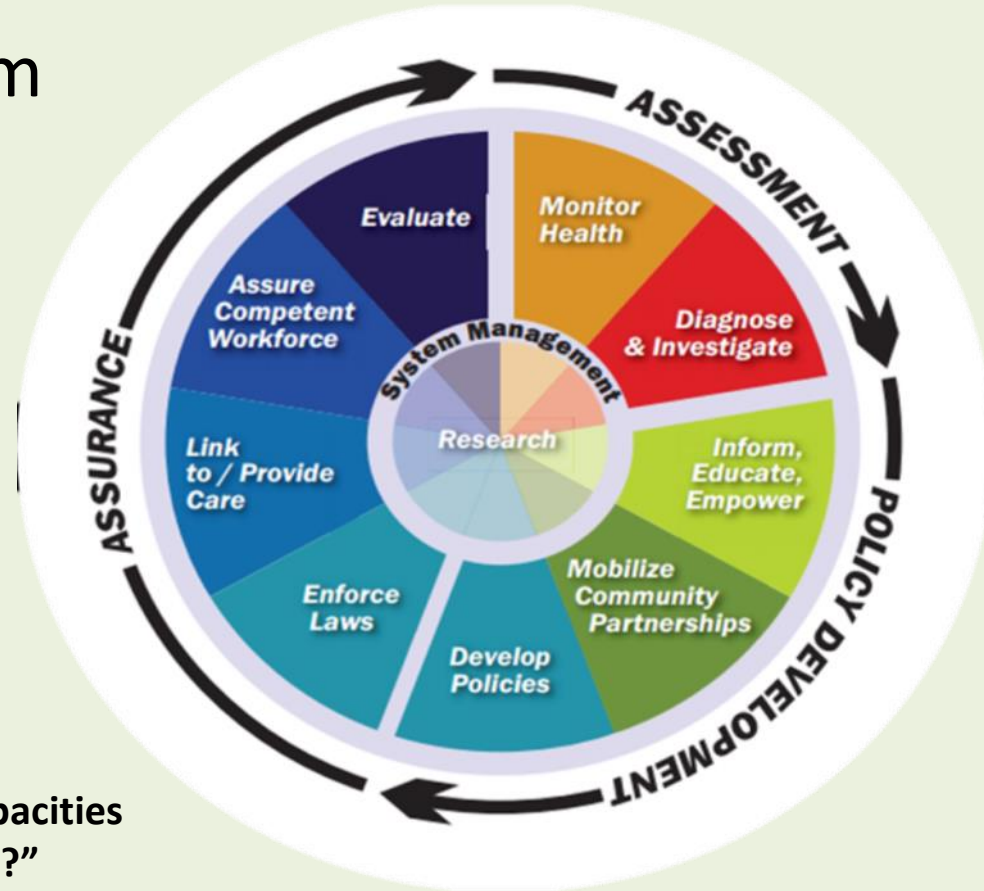
## Next Steps

- Discuss the Essential Public Health Services and identify where each organization is active
- Select the first Essential Public Health Services to focus on
- Discuss and complete the performance measurement instrument

# Local Public Health System Assessment (LPHSA)

## MAPP Phase 3

- Participation from all segments of public health system
- Based on 10 Essential Public Health Services



“What are the components, activities, competencies, and capacities of our local public health system?”

“How are the 10 Essential Services of public health being provided to our community?”

# Thank You



Questions or comments: [HealthySolano@SolanoCounty.Com](mailto:HealthySolano@SolanoCounty.Com)



*Healthy People – Healthy Community*

