

COMMUNITY HEALTH STATUS ASSESSMENT

data we currently have

Meileen Acosta, MPH

Marijoyce Naguit, MPH

MAPP Steering Committee Kick-Off

February 23, 2015

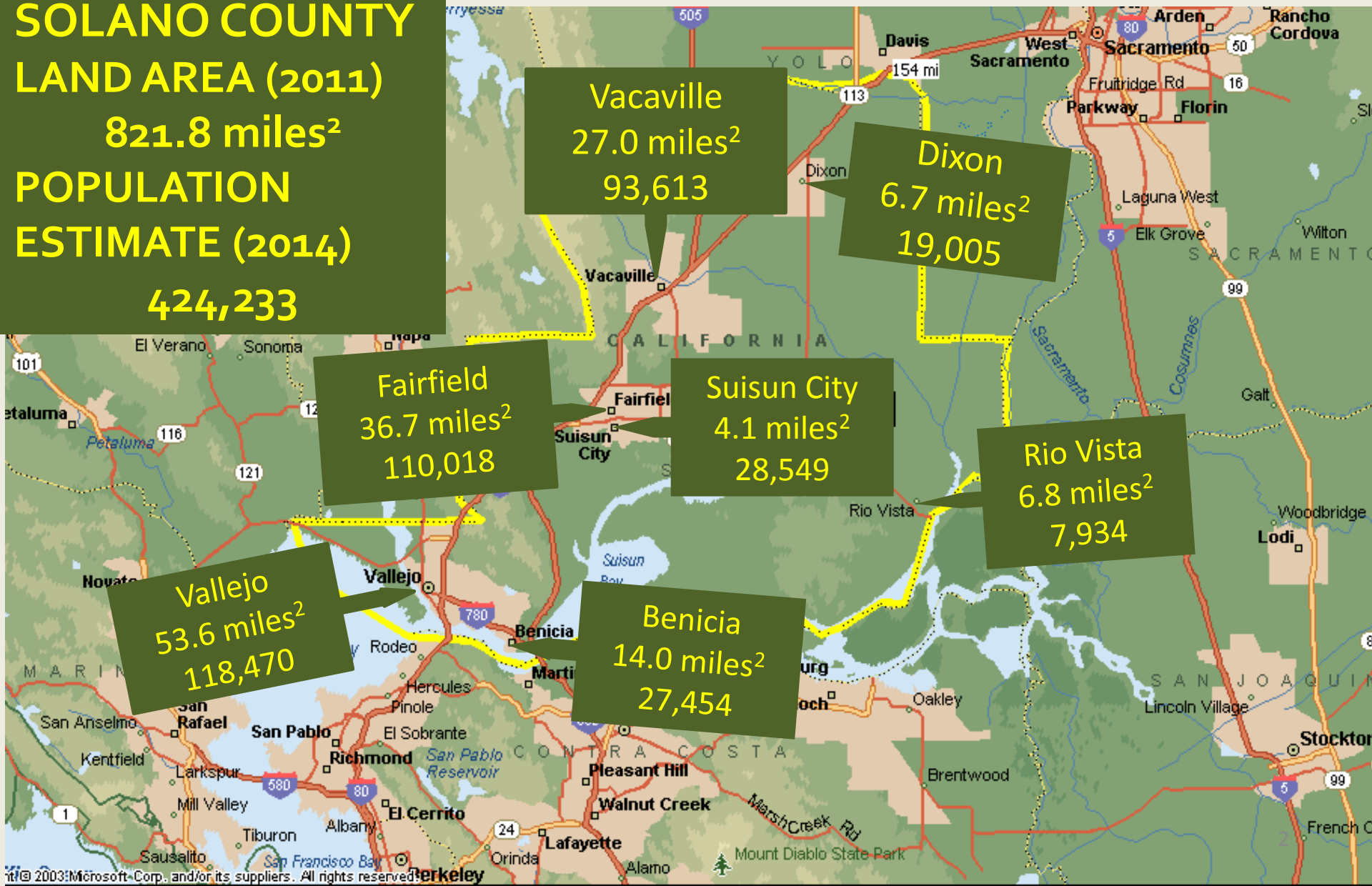


Healthy People – Healthy Community



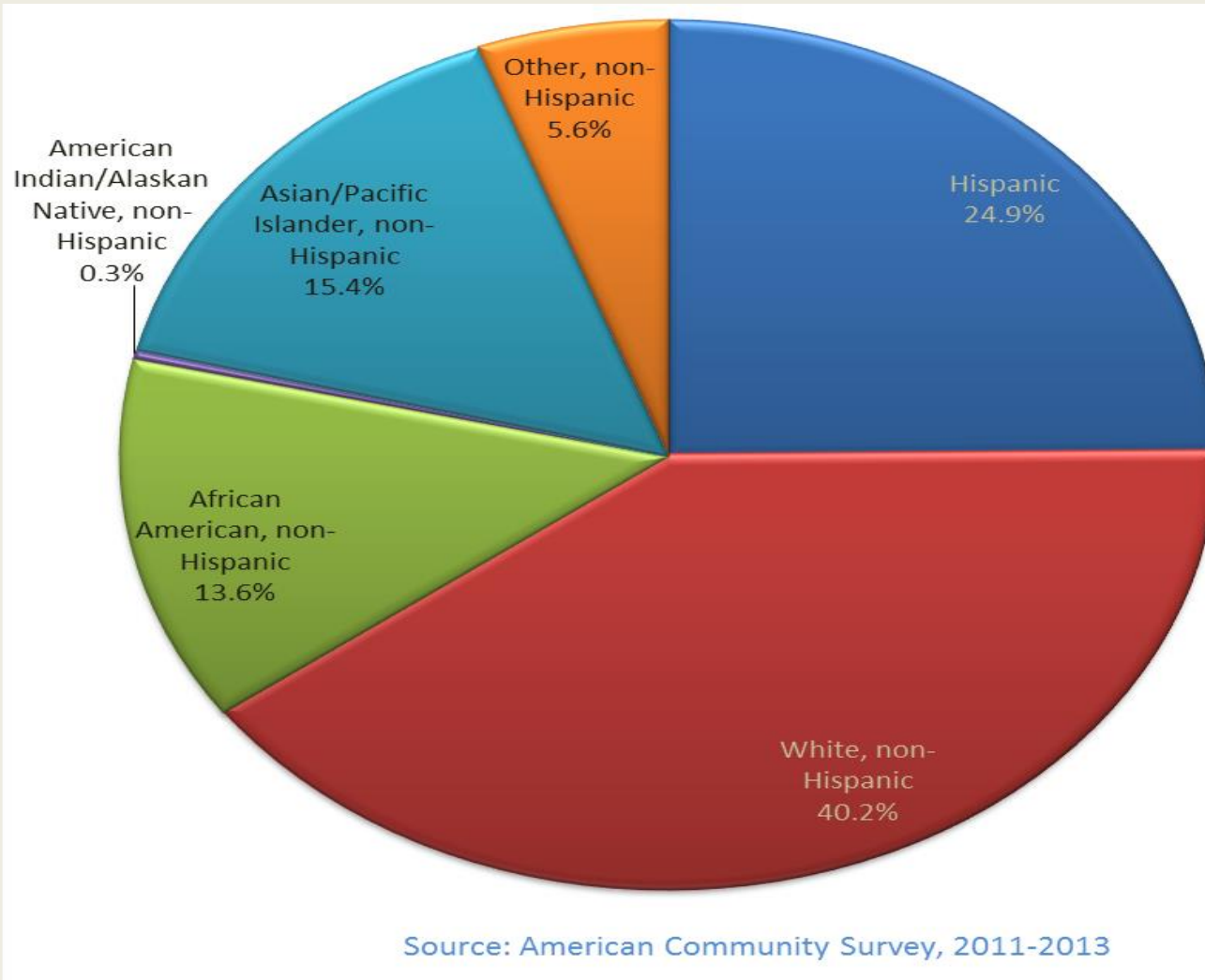
Demographics: Land Area and Population

SOLANO COUNTY
LAND AREA (2011)
821.8 miles²
POPULATION
ESTIMATE (2014)
424,233



Demographics

Race/Ethnicity



Demographics

Age and Gender

- **Median age: 37 years**
 - White, non-Hispanic: 46 years
 - Hispanic: 27 years
- **Children under 18 years old**
 - Almost **1 in 4** (24%)
- **Adults 65 years old or older**
 - Over **1 in 9** (12%)
- **Gender**
 - **Female**: 50%
Average life expectancy: **81 years**
 - **Male**: 50%
Average life expectancy: **77 years**

Source: American Community Survey, 2011-2013

Socioeconomic

Over **4 in 9** (45%) Solano **third grade** children
read at grade level*



*CA: 45% third graders read at grade level

Source: Kidsdata.org



Socioeconomic

8 in 9 (88%) Solano adults 25 years and older had a high school degree or higher



About **3 in 9** (34%) Solano adults 25 years and older had an associates degree or higher



Over **2 in 9** (25%) Solano adults 25 years and older had a Bachelor's degree or higher



Source: American Community Survey, 2011-2013

Socioeconomic

- Median household income: \$67, 177
- Median rent: \$1,264
- Almost **HALF** (48.3%) of Solano residents **spend** 35% or more of their household **income on rent**

Source: American Community Survey, 2009-2013

Socioeconomic

- **All Solano residents**
About **1 in 8** (13%)
- **Children under 18 years old**
Almost **1 in 5** (18.8%)
- **Adults 18 to 64 years old**
Over **1 in 9** (11.8%)
- **Adults 65 years old or older**
Over **1 in 15** (7.5%)

Source: American Community Survey, 2009-2013

Health Resource Availability⁹

- **All Solano residents**
7 in 8 (87%)
- **Children under 18 years old**
Over **14 in 15 (94.2%)**
- **Adults 18 to 64 years old**
Over **4 in 5 (81.6%)**

Source: American Community Survey, 2009-2013

Health Resource Availability

Access to Care -- Children

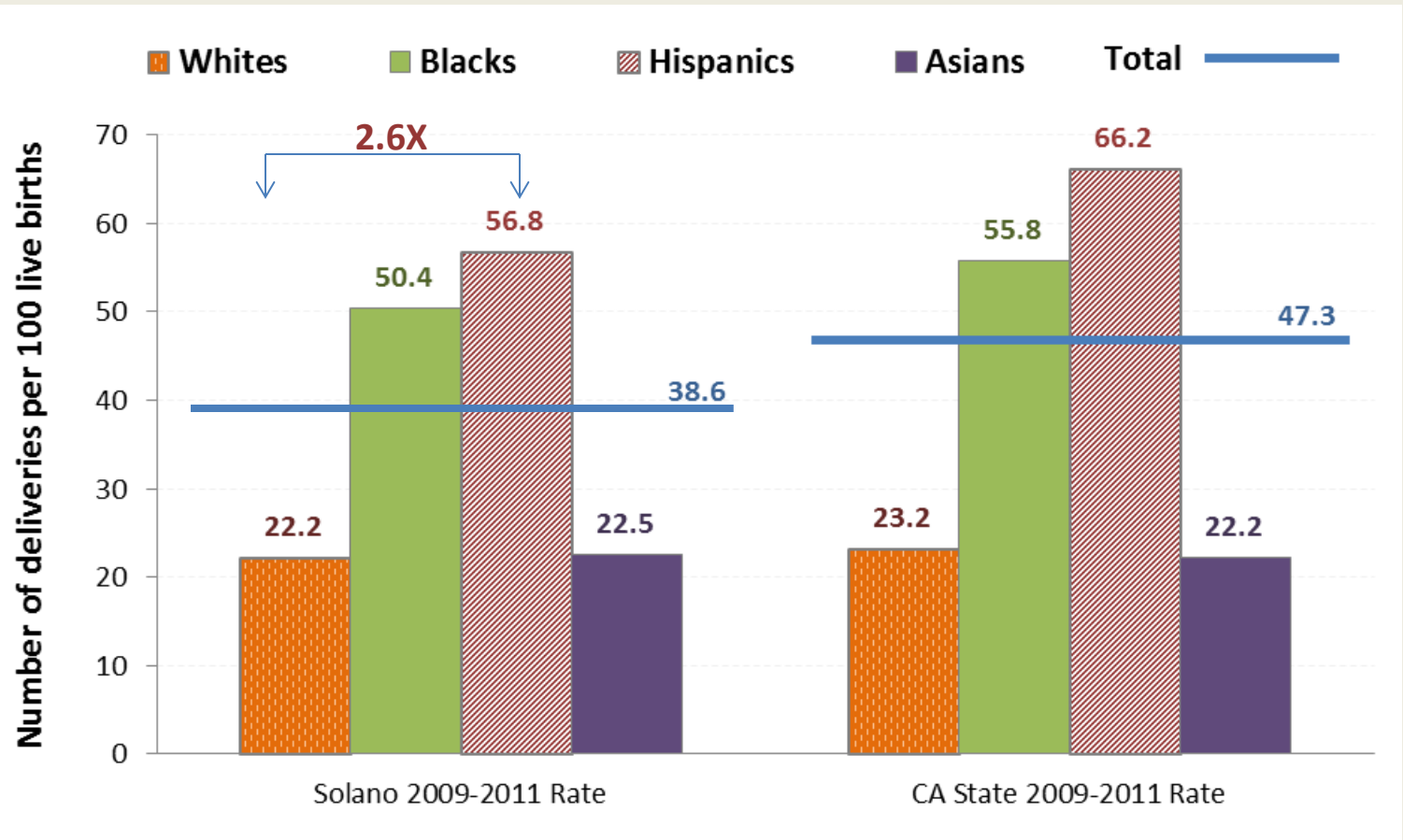
- For every 100 children age 0 to 17 years old, **91.1** had a doctor.*
- For every 100 children age 3 to 11 years old, **87.6** had a dental visit in the past year.*
- For every 100 Medicaid/CHIP enrollee age 1 to 20 years old, **40.8** received any dental service.**

*Source: California Health Interview Survey (CHIS), 2011-2012

**Source: Utilization by County for Dental Managed Care and Fee for Service.

Health Resource Availability

11



Source: California Center for Health Statistics, Vital Statistics, Birth Statistical Master File

Behavioral Risk Factor

	Solano	California
% of adults who smoke (2011-2012)*	21.3%	13.8%
% of youth grades 9-12 who smoke (2012)**	10.4%	10.5%
% of 11 th graders who used alcohol in the past 30 days (2009-2011) +	38%	35%
% of 11 th graders who binge drink (2009-2011) +	21%	22%

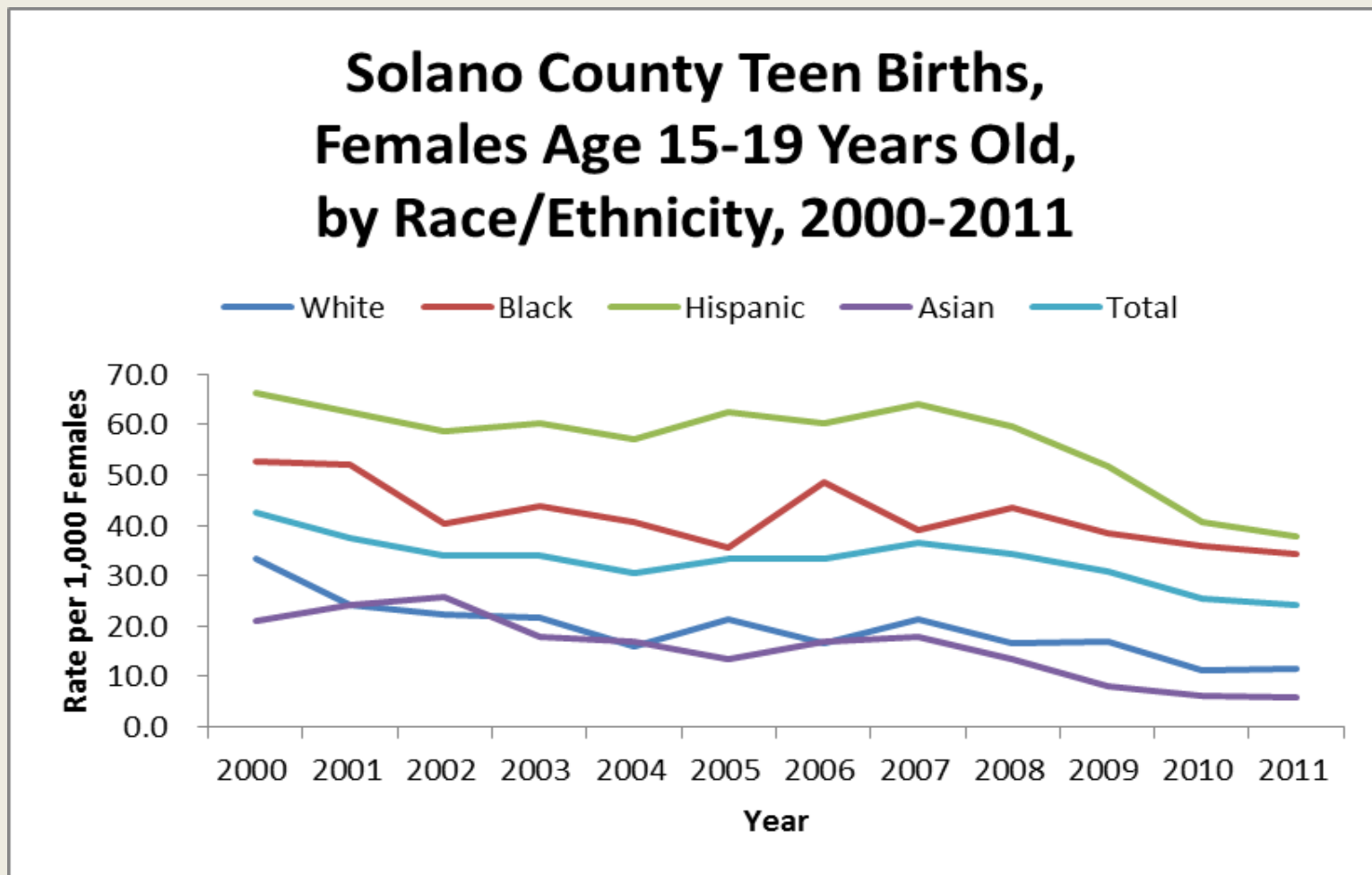
*Source: California Health Interview Survey (CHIS), 2011-12

**Source: California Student Tobacco Survey (CSTS), 2012.

+Source: Analysis by California Department of Public Health, Safe and Active Communities Branch (SACB), December, 2013. Based on West Ed website LEA reports <http://chks.wested.org/reports/search> and from aggregate county reports.

Teen Birth Rate

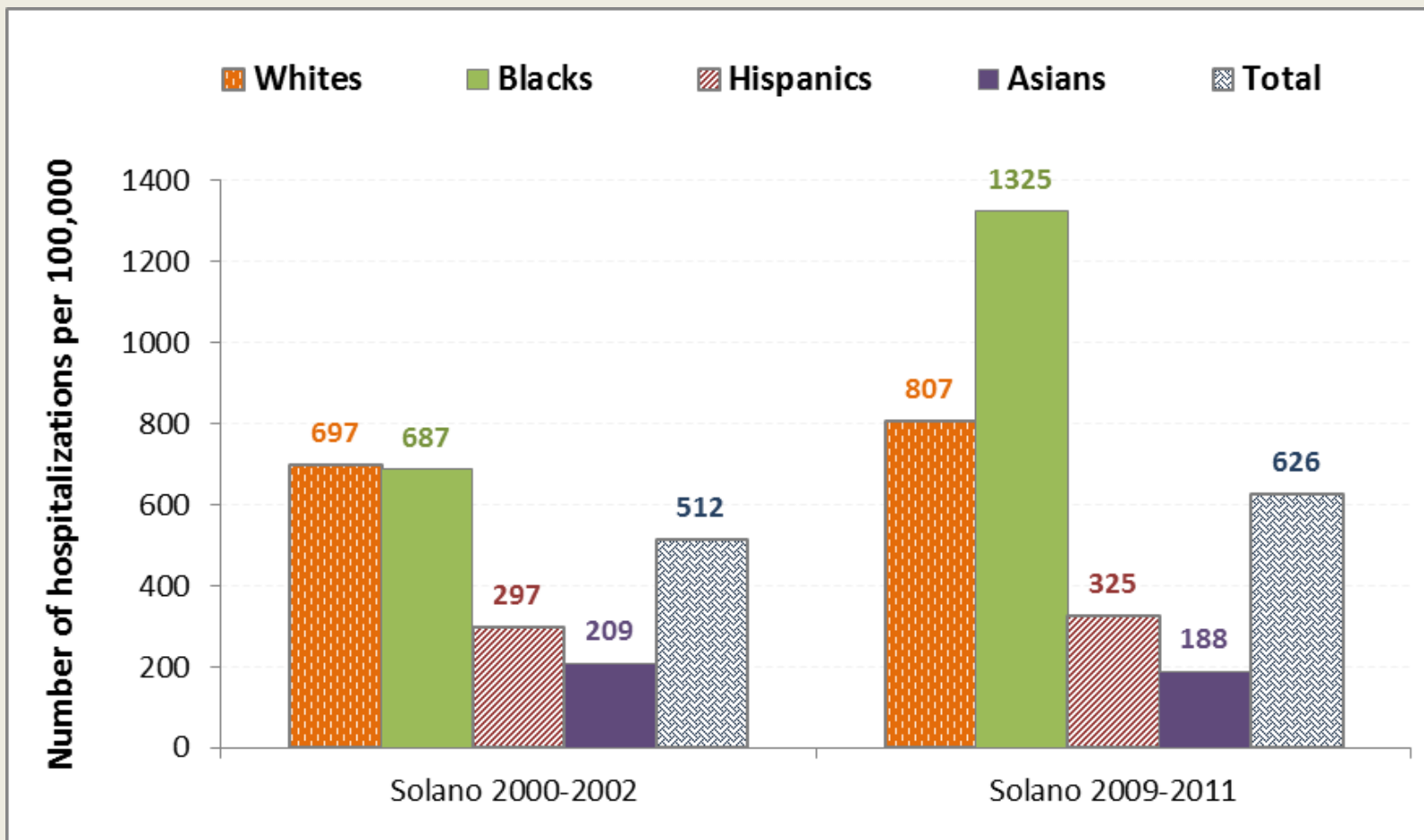
Behavioral Risk Factor



Source: California Center for Health Statistics, Vital Statistics, Birth Statistical Master File

Behavioral Risk Factor

Substance Abuse Hospitalization Rate
Females Age 15 to 24 years old, by
Race/Ethnicity



Source: Office of Statewide Health Planning and Development (OSHPD), analyzed by Family Health Outcomes Project, UCSF

Behavioral Risk Factor

94.5% of Solano County students are **up-to-date** on their immunizations (90.4% in CA)

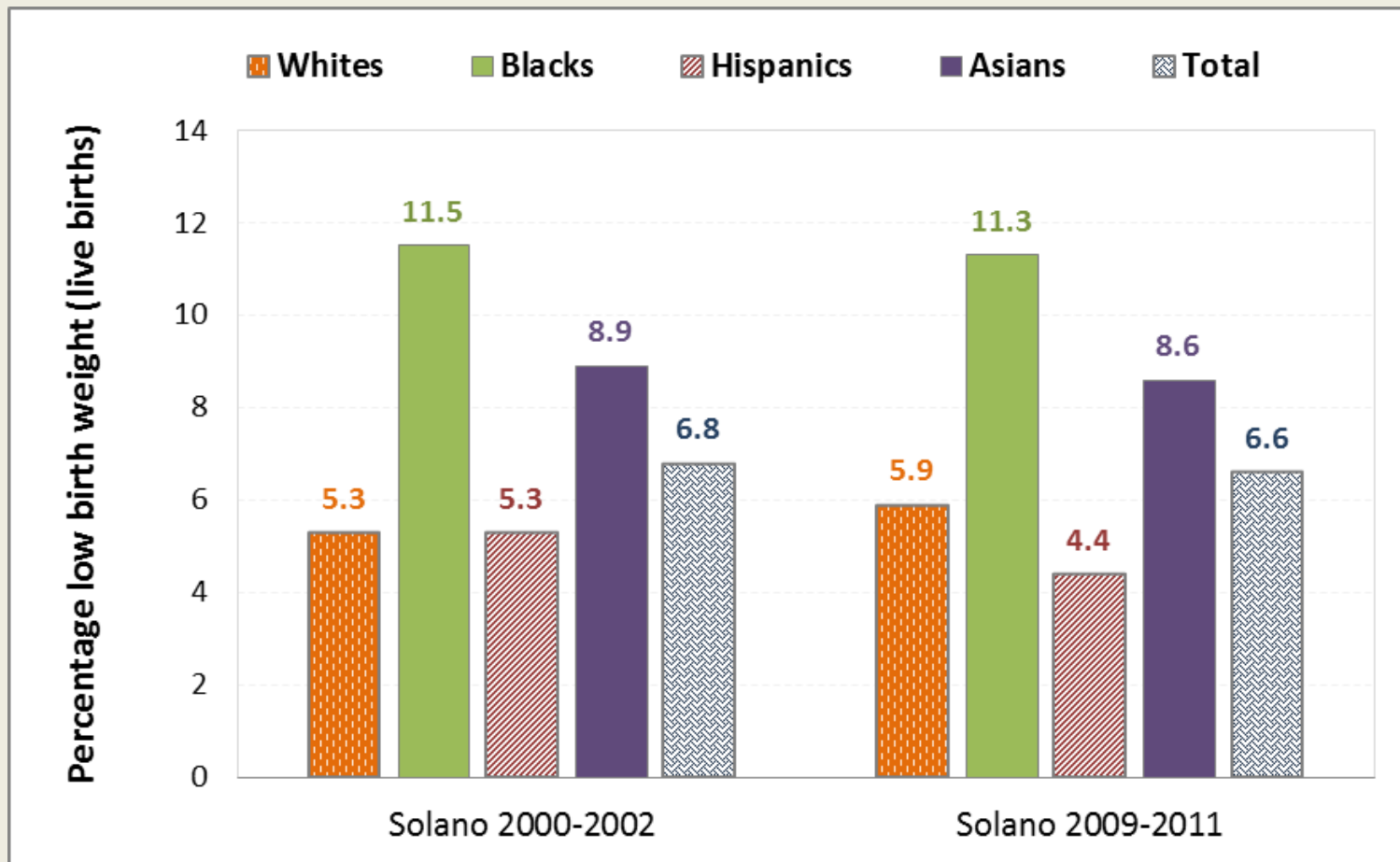
Benicia has the **highest** percent of **under-immunized** students: 8.1%
(3.6% in Solano County; 6.9% in CA)

Vacaville has the **highest** percent of Personal Belief Exemptions (**PBE**): 3.6%
(1.8% in Solano County; 2.5% in CA)

Source: CDPH Immunization Levels in Child Care and Schools, 2014-2015

Percentage Infant Low Birth Weight

Health Outcome

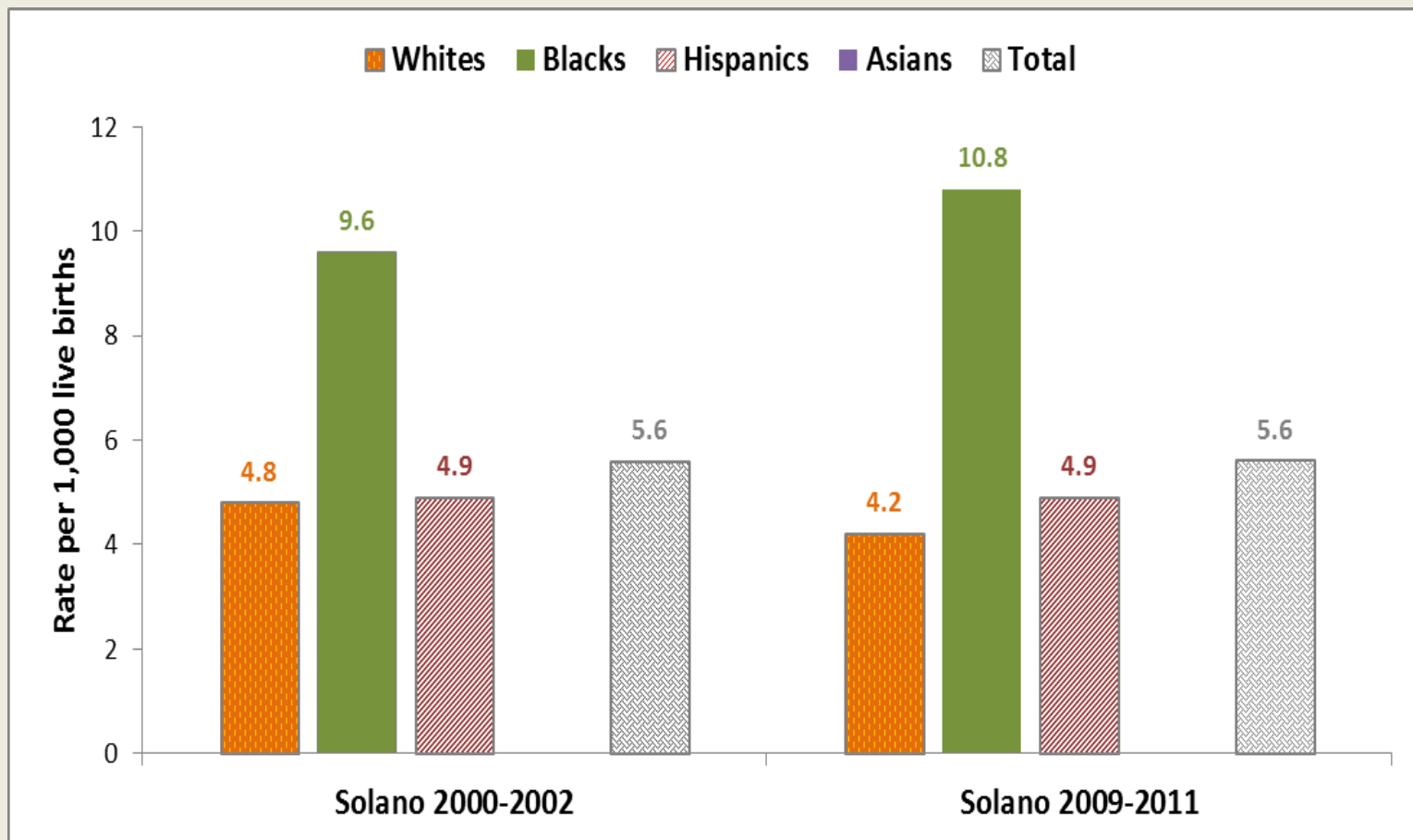


Source: California Center for Health Statistics, Vital Statistics, Birth Statistical Master File

Rate of Infant Mortality by Race/Ethnicity

Health Outcome

17



Source: California Center for Health Statistics, Vital Statistics, Birth Statistical Master File

Health Outcome

Childhood Lead

102 children age 20 years old or younger in Solano County had elevated blood lead level

In Solano County, **Vallejo** has the **highest** percentage of children with elevated blood levels: 43.1%

Source: Solano County, Childhood Lead Program, 2013-2014

Health Outcome

Obesity

	Solano	California
Overweight and obese public school students per 100 population in grades 5, 7, 9, and 11 (2009-2011)*	38.4	38
% of adults who are overweight or obese (2011-12)**	69.2%	59.8%

*Source: Kidsdata.org

**Source: California Health Interview Survey (CHIS), 2011-2012

Health Outcome

Prevalence of asthma among **Solano** residents is **1.6X higher** than among all Californians

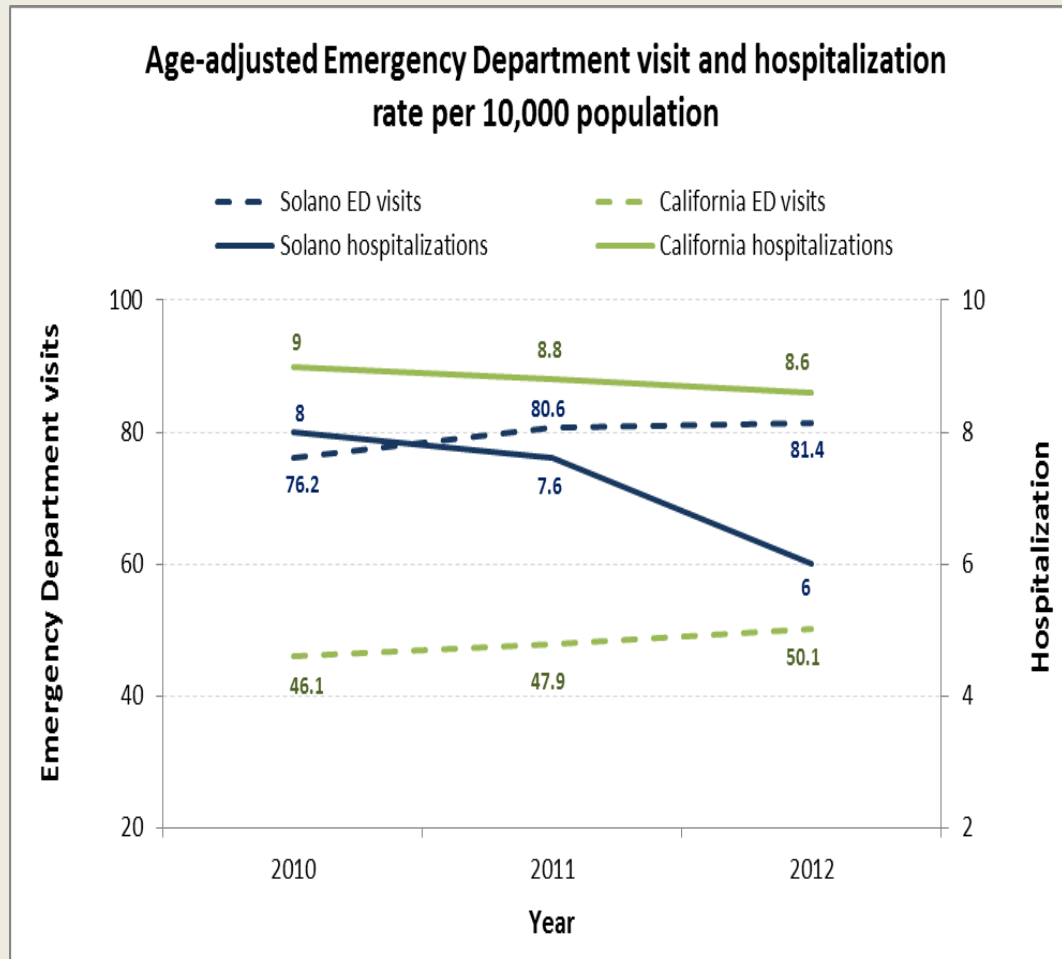
Solano: 22.6%

California: 14.1%

Source: California Health Interview Survey (CHIS), 2011-2012

Asthma ED Visits and Hospitalizations

Health Outcome



ED visit rate in 2012 among Solano residents was **1.6 X** the ED visit rate among all Californians; however, the **hospitalization rate** among Solano residents is **lower** compared to that of all Californians.

Source: California Breathing, using Office of Statewide Health Planning and Development (OSHPD) 2010-2012 ED Databases

Diabetes

Health Outcome

- Prevalence (among adults 20 years old and older, 2011)*:
10.7% (↑ than CA)
- ED visit rate**:
297.6 per 10,000 population (↑ than CA)
- Hospitalization rate**:
181.1 per 10,000 population (↓ than CA)
- Mortality rate***:
24.1 per 100,000 population (↑ than CA)
(age-adjusted)

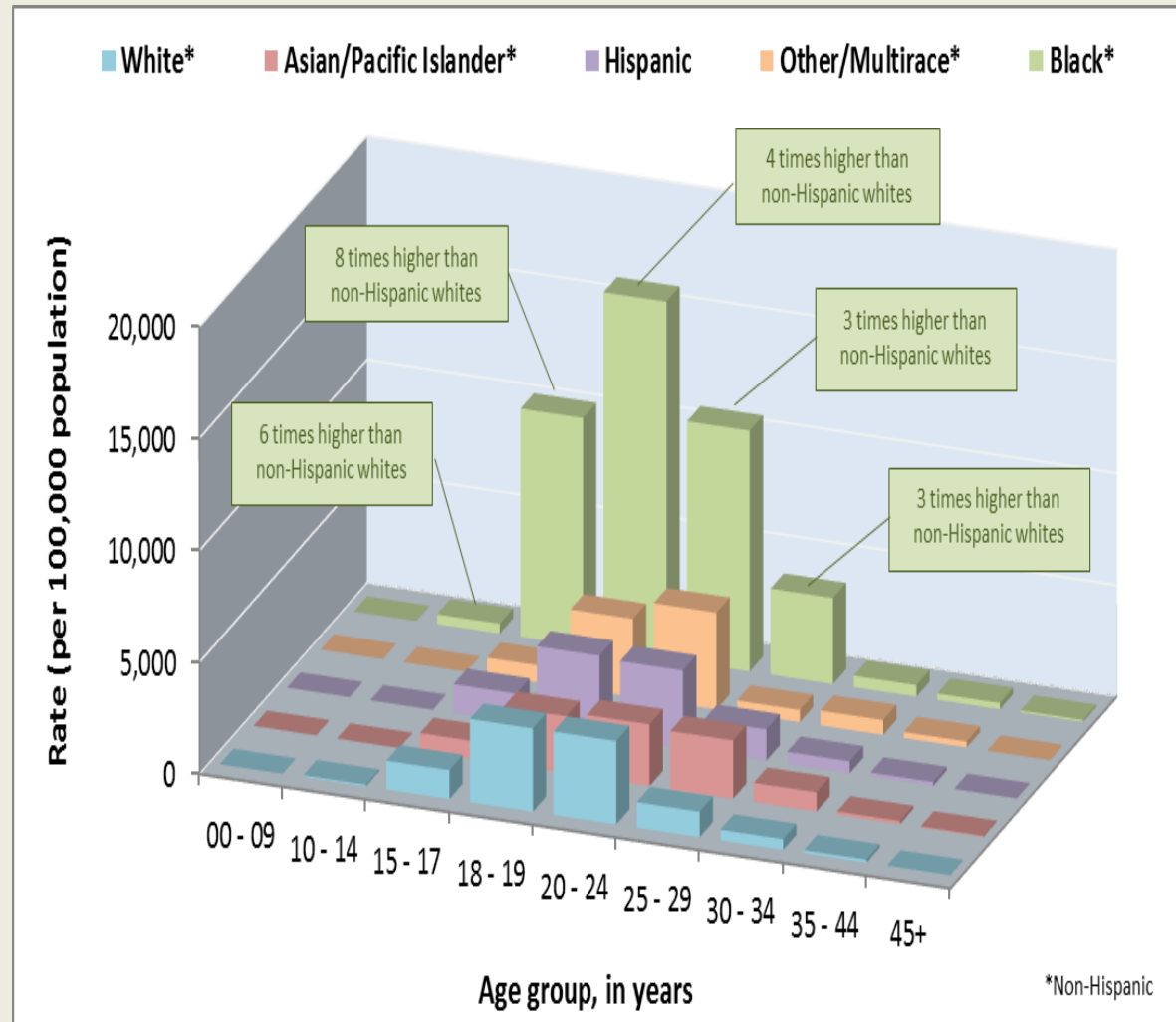
*Source: National Center for Chronic Disease Prevention and Health Promotion, Division of Diabetes Translation:

**Source: Office of Statewide Health Planning and Development (OSHPD), 2011

***Source: California Department of Health, 2010

Health Outcome

Chlamydia Rate Among Females, By Age Group and Race/Ethnicity (2012)



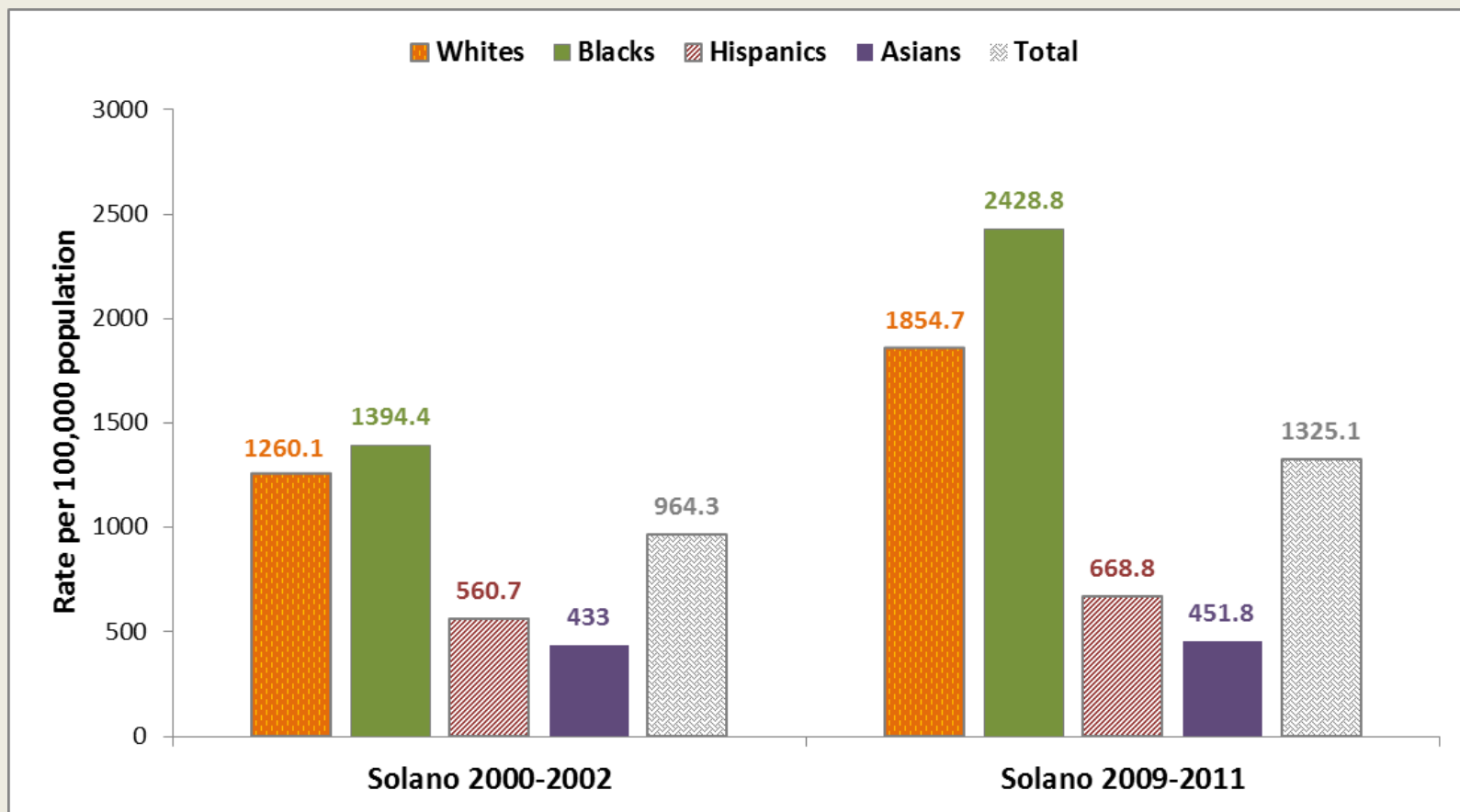
HIGHER
chlamydia rate
among
**African
American
female youths**
than White youths

The rate of chlamydia among African American female youths 15-24 years old are **3 to 8 times higher** compared to non-Hispanic white youths of the same age group.

Source: California Department of Public Health, Sexually Transmitted Diseases Branch

Mental Illness Hospitalization, Age 15 to 24 Years, by Race/Ethnicity

Health Outcome



Source: Office of Statewide Health Planning and Development (OSHPD), analyzed by Family Health Outcomes Project, UCSF



Health Outcome

Mortality Rates

Top three causes of death:

1. **All cancers** (177.6 per 100,000)

Top three cancer deaths

1. Lung cancer (44.4 per 100,000)
 2. Breast cancer (female) (26.4 per 100,000)
 3. Prostate cancer (18.0 per 100,000)
2. **Coronary heart disease** (80.0 per 100,000)
 3. **Alzheimer's disease** (44.9 per 100,000)

Source: California Department of Public Health, 2010-2012

Community Environment

Over 1 in 4 (26.5%) adults ate *3+ fruits and vegetables* the day before (2011-2012)*



1 in 3 (33.3%) tobacco retail stores have *low or nonfat milk* available (2013)**



Over 2 in 5 (42.7%) tobacco retail stores have *fresh fruit or vegetables* available (2013)**

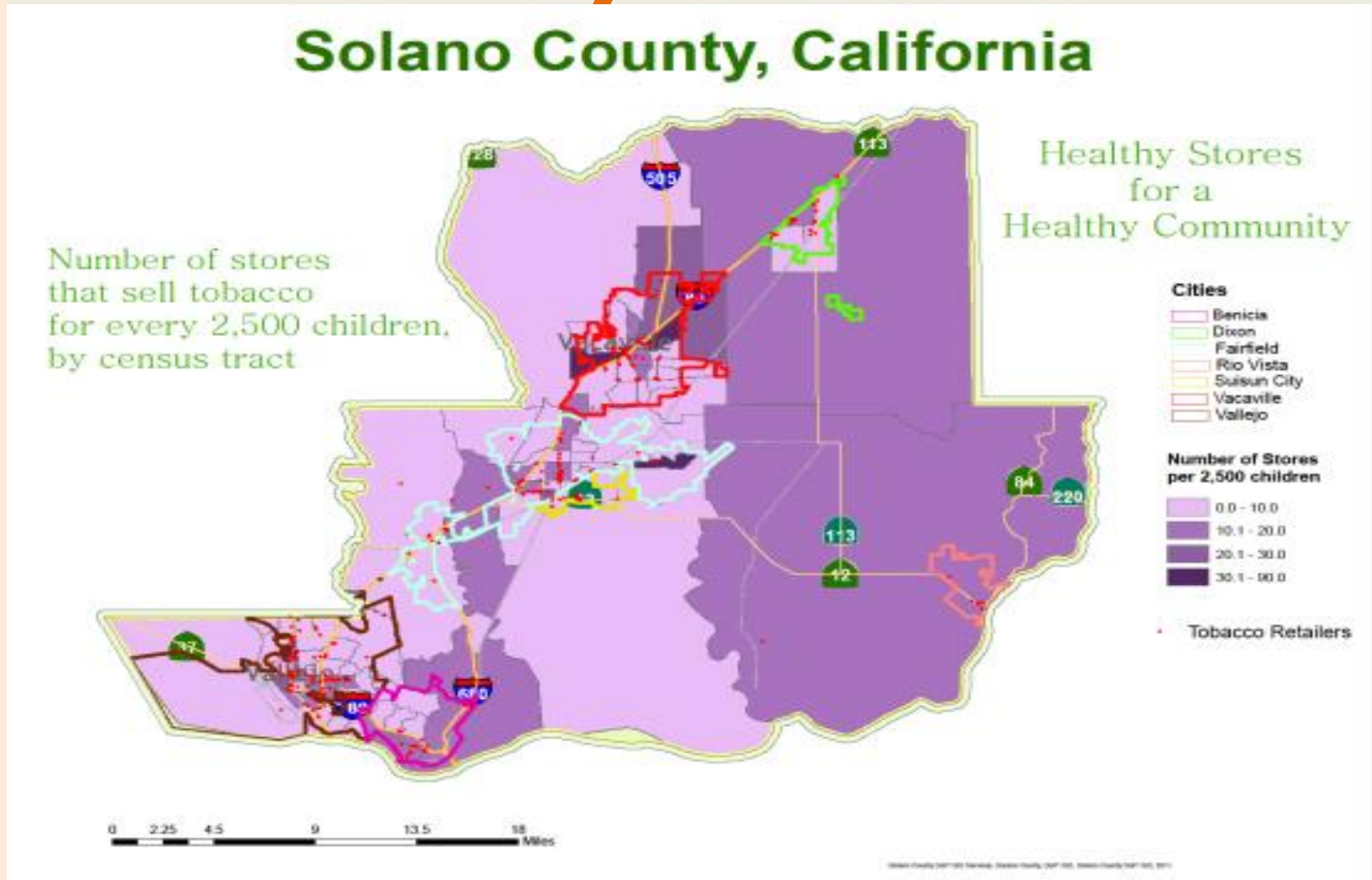


*Source: California Health Interview Survey (CHIS), 2011-12

**Source: Tobacco Prevention and Education Program, Healthy Stores Health Community survey, 2013

Community Environment

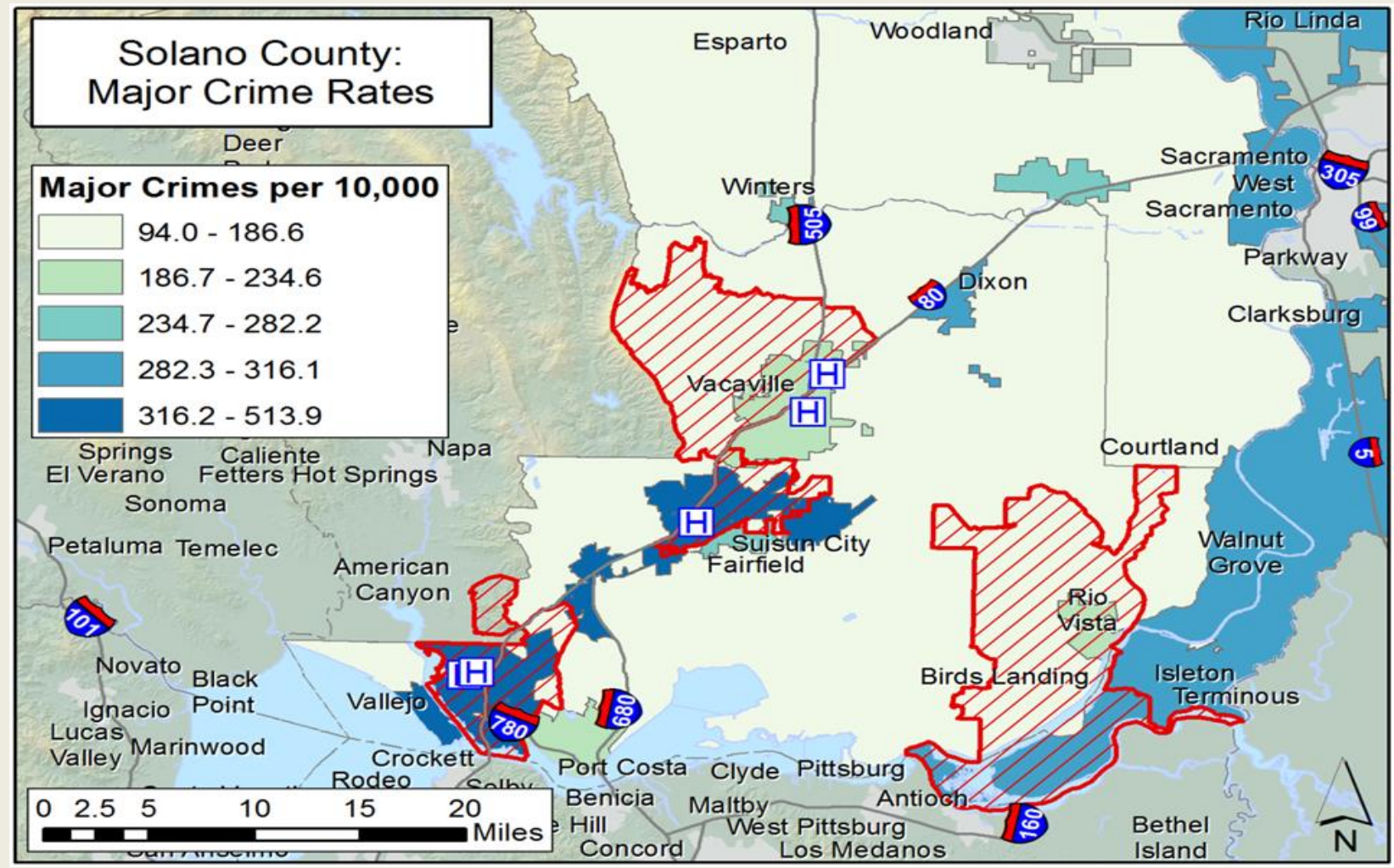
Tobacco Retailers per 2,500 Children



Source: American Community Survey (Population); California Board of Equalization (Tobacco Retailers)

Community Environment

Crime Rate



Source: Major crimes by municipality as reported by California Attorney General's Office, 2010



Healthy People – Healthy Community



COMMUNITY THEMES and STRENGTHS ASSESSMENT

preliminary data

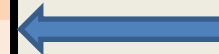
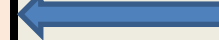


Meileen Acosta, MPH
Marijoyce Naguit, MPH
MAPP Steering Committee Kick-Off
February 23, 2015



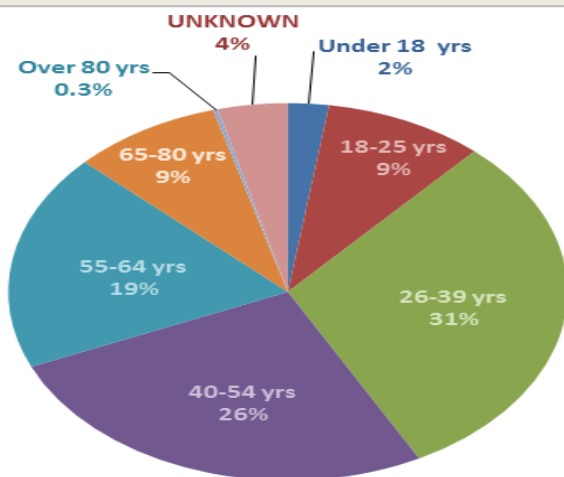
CTSA Survey Respondents ³⁰

	Percentage
Total =774	
Solano resident	
Yes	91.0
No	4.0
Unknown	5.0
City of residence	
Benicia	2.9
Dixon	0.9
Fairfield	39.5
Rio Vista	1.4
Suisun	8.9
Vacaville	18.5
Vallejo	19.5
Unincorporated Area	0.4
Other	1.6
Not a Solano Resident	2.2
UNKNOWN	4.2
Gender	
Female	76.2
Male	19.0
Unknown	4.9



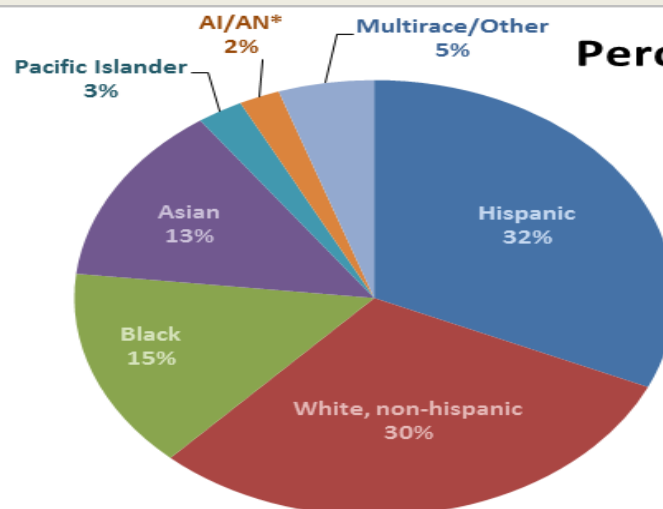
Source: Community Themes and Strengths Assessment, Solano County, 2014

CTSA Survey Respondents



Percentage of Respondents, by Age Group

Almost **1/3rd** of respondents were adults age **26-39 years old** while over **1/4th** were adults **40-54 years old**.



Percentage of Respondents, by Race/Ethnicity

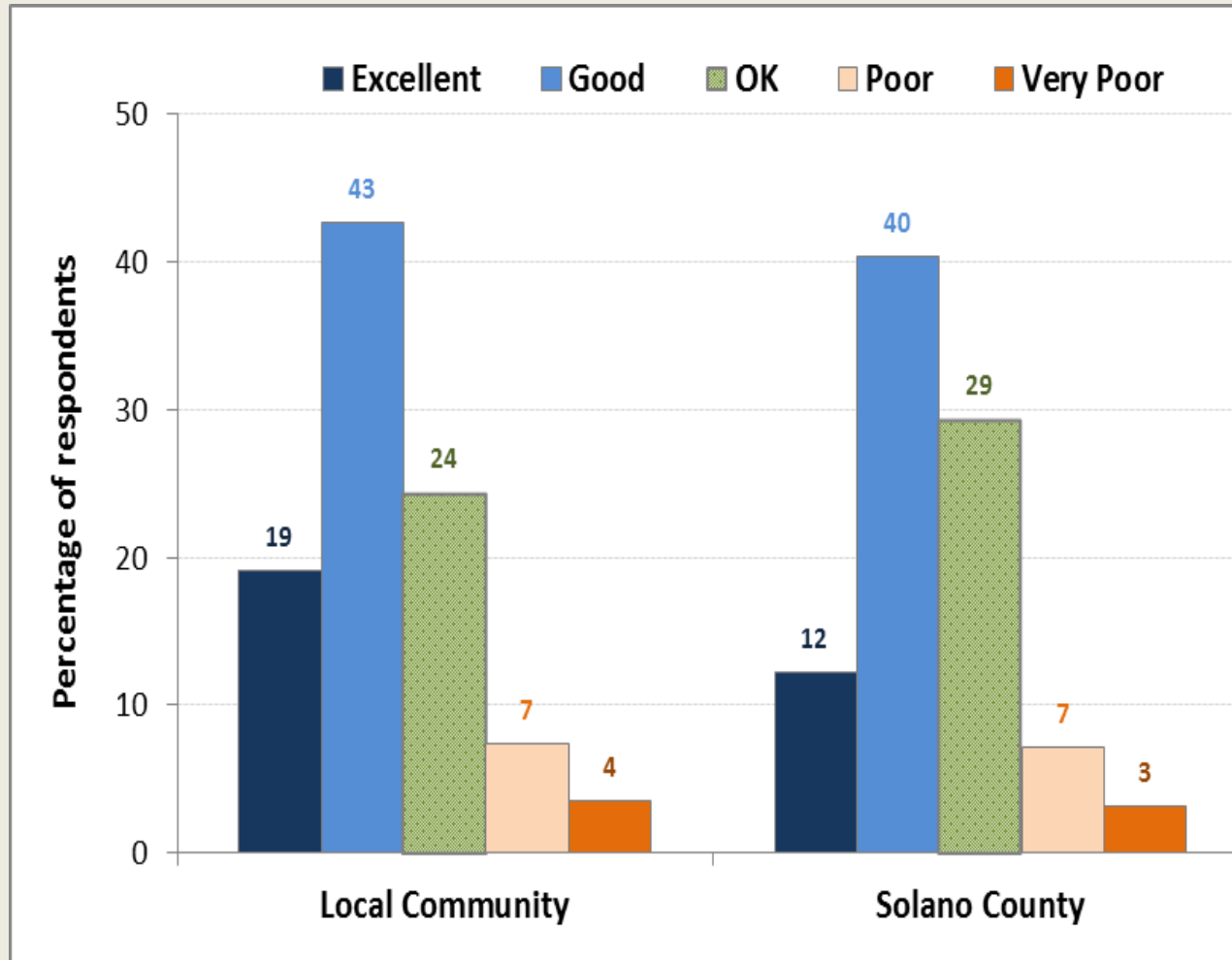
Almost **1/3rd** of respondents were **Hispanics** and almost **1/3rd** were **non-hispanic Whites**.

*AI/AN=American Indian/Alaskan Native

Source: Community Themes and Strengths Assessment, Solano County, 2014

How would you rate your local community and Solano County as a place to live?

A Place to Live

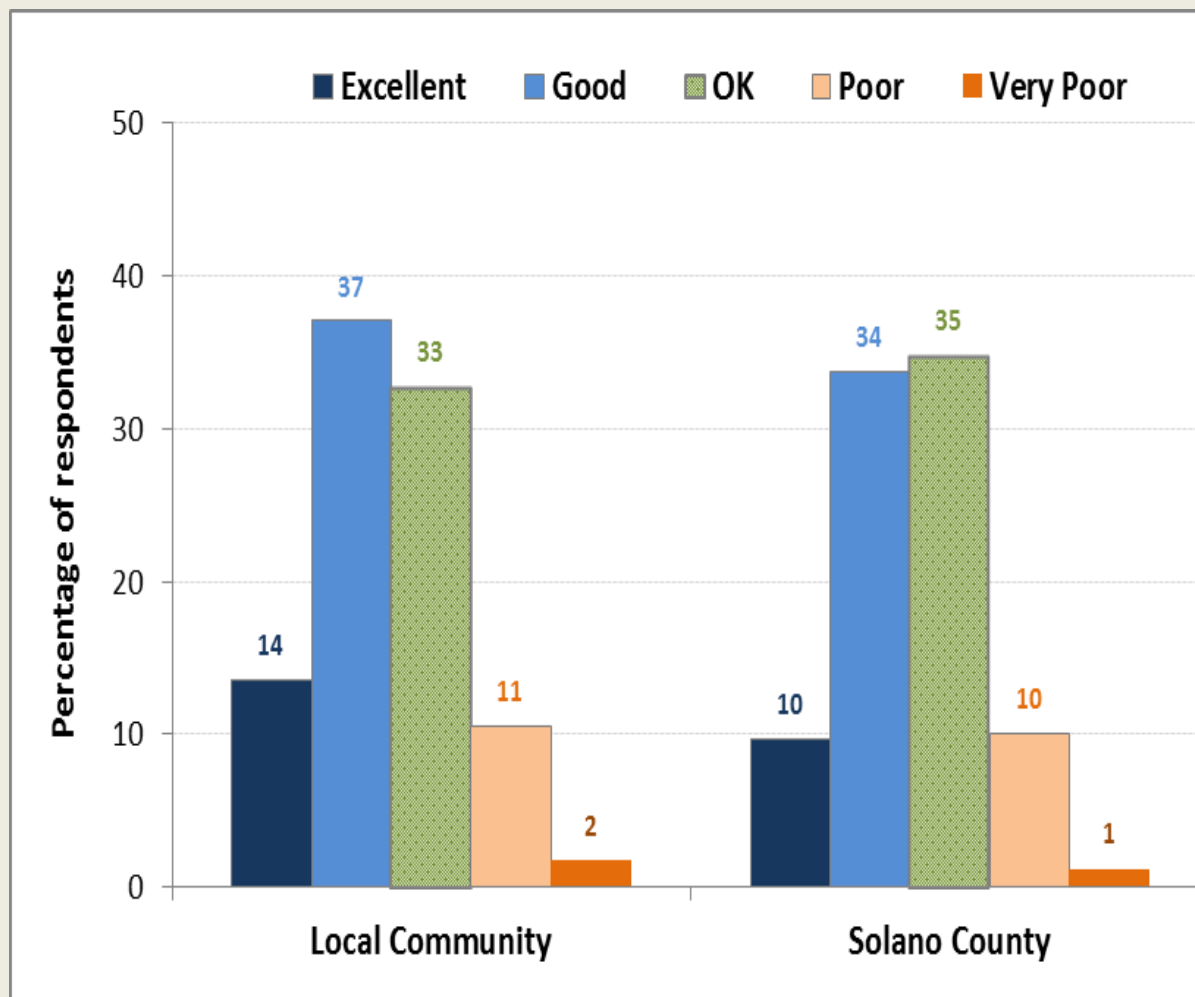


Source: Community Themes and Strengths Assessment, Solano County, 2014

Over **3/5th** of respondents rated their local community and Solano County as either a **“Good”** or **“Excellent”** place to live.

Community Involvement

How would you rate the sense of community involvement and responsibility in your local community and in all of Solano County?

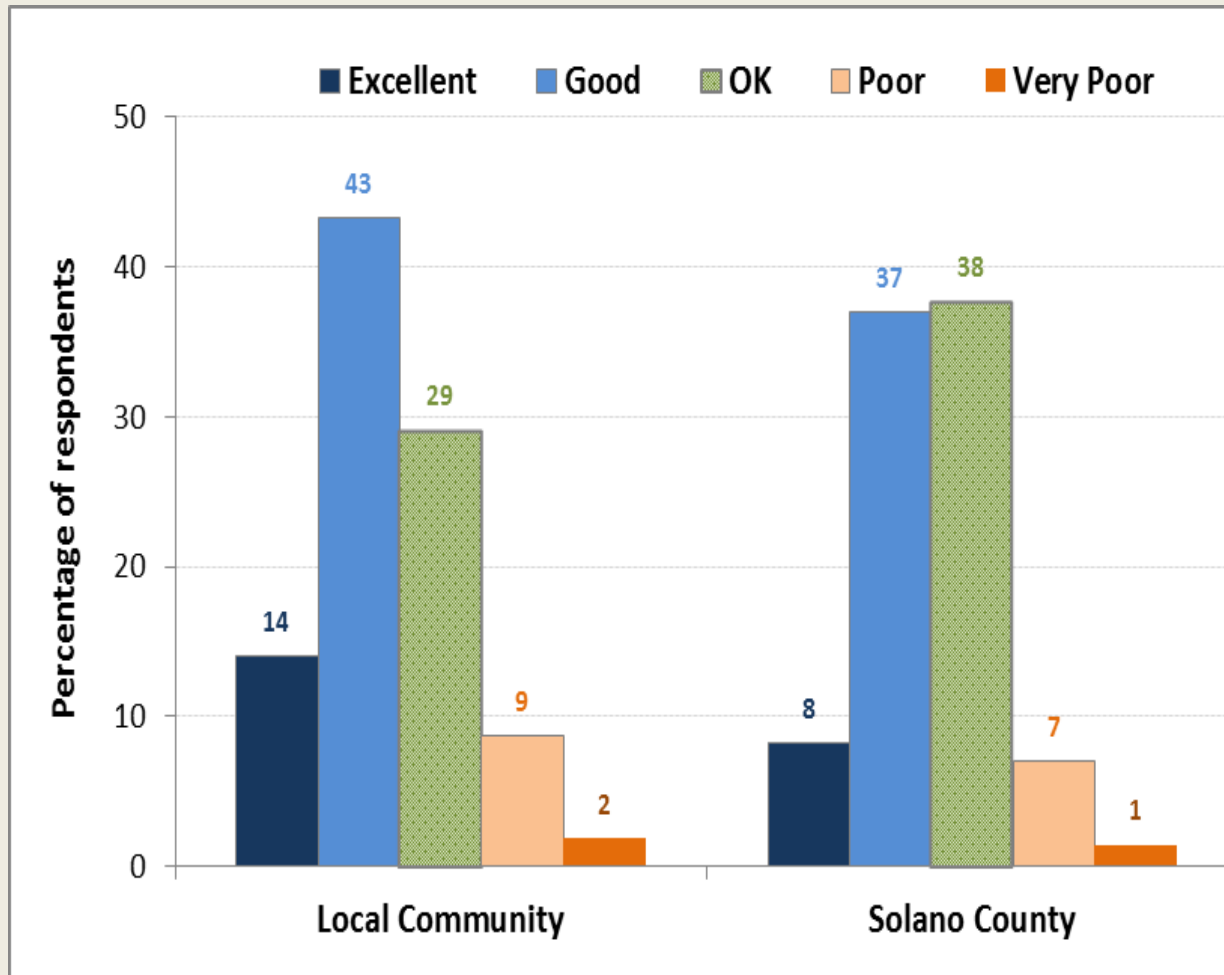


Source: Community Themes and Strengths Assessment, Solano County, 2014

Only **half** of respondents said their local community and Solano County have a “**Good**” or “**Excellent**” sense of community involvement and responsibility.

How would you rate the quality of life in your local community and in all of Solano County?

Quality of Life

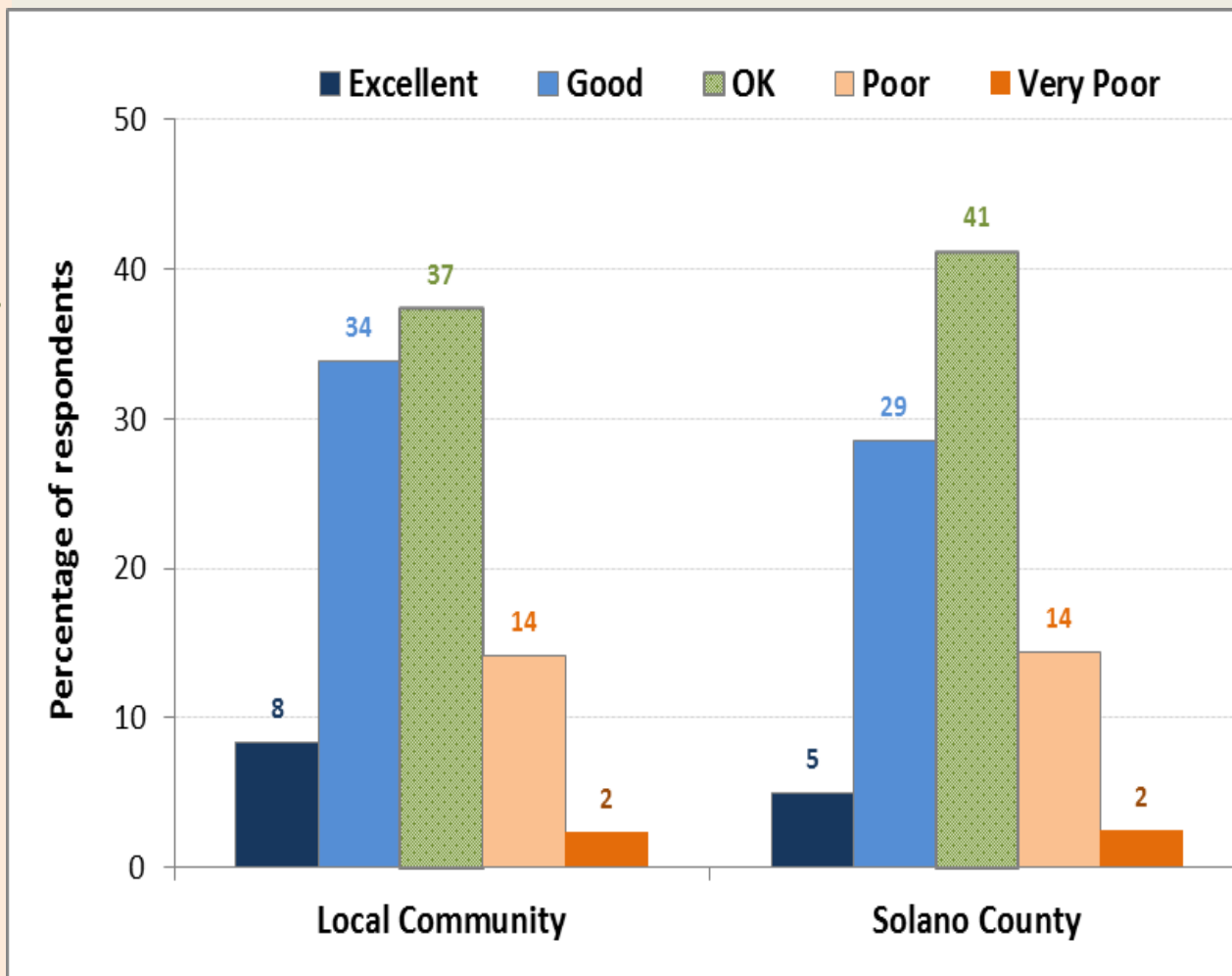


Source: Community Themes and Strengths Assessment, Solano County, 2014

More than half of respondents rated the quality of life in their local community as either “Good” or “Excellent” while less than half rated it similarly for Solano County.

Healthy Community

How would you rate your local community and all of Solano County as a “healthy community”?

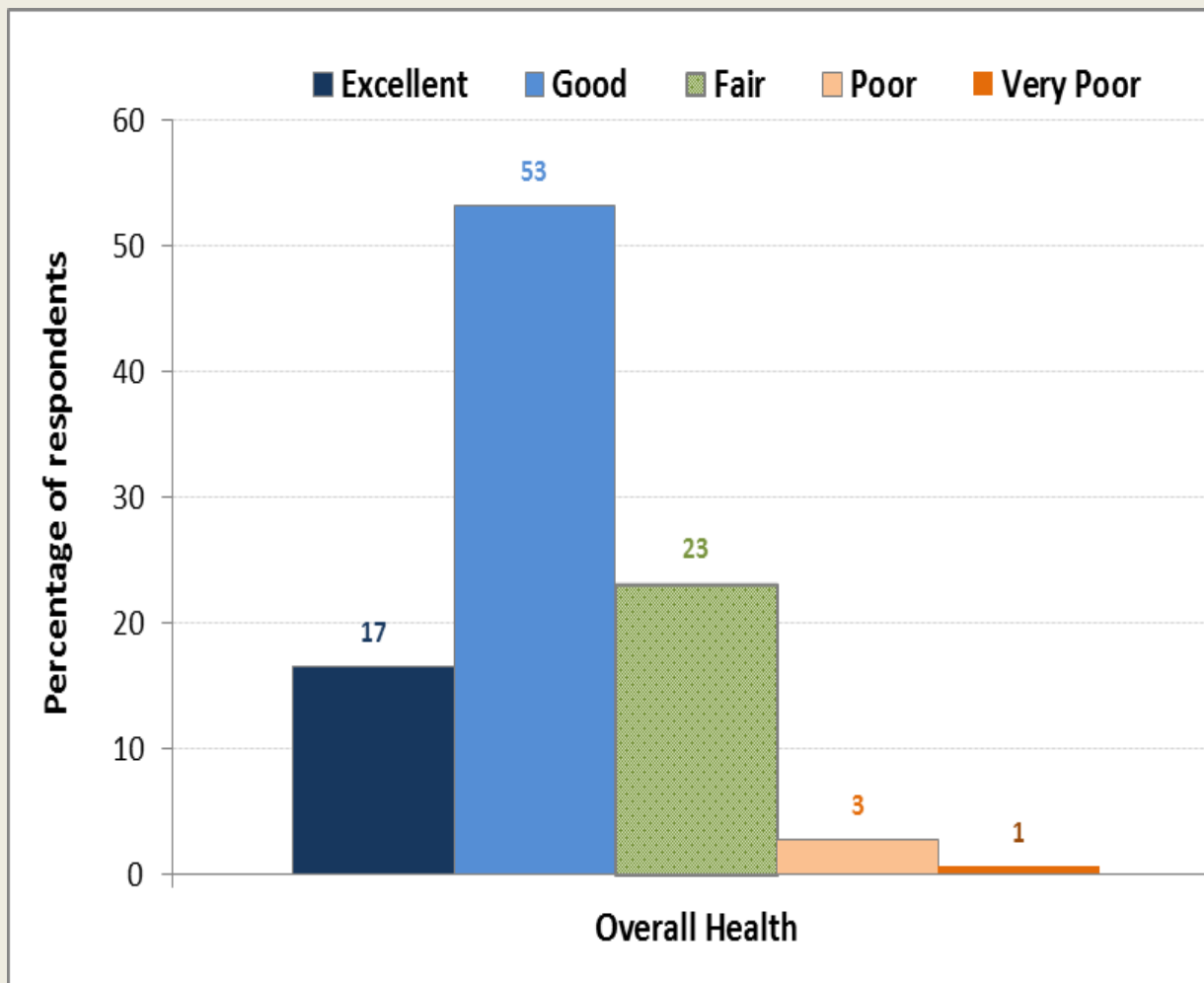


Source: Community Themes and Strengths Assessment, Solano County, 2014

A little over **2/5th** of respondents rated their **local community** as either “**Good**” or “**Excellent**” healthy community; however only **1/3rd** of respondents rated it similarly for **Solano County**.

How would you rate your overall health?

Overall Health



Source: Community Themes and Strengths Assessment, Solano County, 2014

Over **2/3rd** of respondents rated their health as either **“Good”** or **“Excellent”**.

Almost **1/4th** of respondents said that their overall health is **“Fair”**.

Health Issues in Your Local Community

Top Three

3 health issues that most affect local community	Number	Percent
Alcohol/Drug abuse	439	56.7
Obesity	309	39.9
Mental health problems	253	32.7
3 individual behaviors		
Drug abuse	399	51.6
Alcohol abuse	305	39.4
Crime/Violence	208	26.9
3 most important factors of a “healthy community”		
Low crime/safe neighborhoods	324	41.9
Safe place to raise kids	266	34.4
Job opportunities	229	29.6
3 social and economic circumstances		
Unemployment	329	42.5
Poverty	269	34.8
No health insurance	237	30.6
3 environmental issues		
Cigarette smoke	314	40.6
Air pollution	267	34.5
Poor housing conditions	249	32.2

Health-related Themes:

1. Substance abuse
2. Safe neighborhoods/ Crime/ Violence
3. Job opportunities/ Unemployment

Source: Community Themes and Strengths Assessment, Solano County, 2014

Thank You

