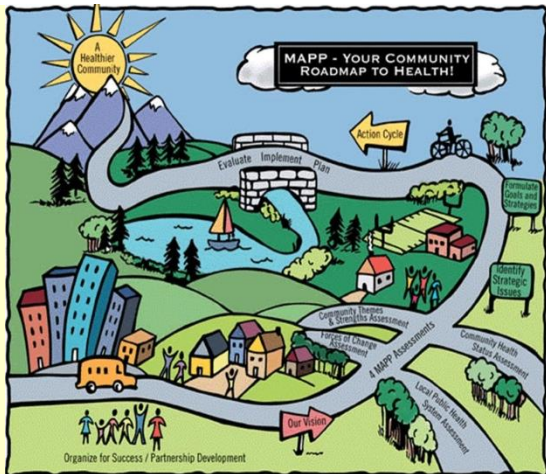


# Join Us!

Solano County Public Health is completing a Community Health Assessment (CHA) and will utilize the MAPP process to accomplish this. We are asking for your participation to facilitate this process.

The MAPP Steering Committee is the 10-20 person group that gives the MAPP process direction. The Steering Committee may serve in a similar function as a board of directors and should be representative of the local public health system. Share your experiences and ideas to help make Solano County a healthier place by joining the MAPP Steering Committee.



# Healthy Solano



Solano County  
Department of Health & Social Services  
Division of Public Health  
275 Beck Avenue  
Fairfield, CA 94533  
Phone: 707-784-8600  
[HealthySolano@SolanoCounty.com](mailto:HealthySolano@SolanoCounty.com)



*Healthy People -  
Healthy Community*





## MAPP Framework

Mobilizing for Action through Planning and Partnerships (MAPP) is a community-wide strategic planning process for improving community health. Coordinated by public health leadership, this process helps communities prioritize public health issues and identify resources for addressing them. The MAPP model depicts the process communities will undertake when working with MAPP. Conducting MAPP should create a sustained community initiative that leads to community health improvement.



The MAPP Model

## 6 Phases of MAPP

### Phase 1: Organize for Success/Partnership Development

- Identifies who should be involved in the process and how the partnership will approach and organize the process

### Phase 2: Visioning

- Collaborative and creative approach that leads to a shared community vision and common values

### Phase 3: Four MAPP Assessments

- **Community Themes and Strengths Assessment (CTSA)** - Identifies issues that interest the community, perceptions about quality of life, and community assets.
- **Local Public Health System Assessment (LPHSA)** - Measures the capacity and performance of the local public health system - all organizations and entities that contribute to the public's health.
- **Community Health Status Assessment (CHSA)** - Assesses data about health status, quality of life, and risk factors in the community.
- **Forces of Change Assessment (FoC)** - Identifies forces that are or will affect the community or local public health system.

## 6 Phases of MAPP

### Phase 4: Identify Strategic Issues

- Uses the information gathered from the four assessments to determine the strategic issues a community must address in order to reach its vision

### Phase 5: Formulate Goals and Strategies

- Involves specifying goals for each of the strategic issues identified in the previous phase. Many communities create a Community Health Improvement Plan (CHIP) at the end of this phase.

### Phase 6: Action Cycle

- Includes planning, implementation, and evaluation of a community's strategic plan.

