



Solano County Registrar of Voters Office

Purpose:

- Guidance on In-Person voting options; and
- Authorize increase in expenditures for conducting Special Vacancy Primary Election on April 4, 2022.

Presented by:

Tim Flanagan – Registrar of Voters (ROV)

John Gardner – Assistant Registrar of Voters

Presented to Board of Supervisors

On January 25, 2022

Department of Information Technology / Registrar of Voters



In-Person Voting Options

- Legislative changes impacting voting
- Impacts on changes
- Possible routes to take
- Sample view of changes
- Recap



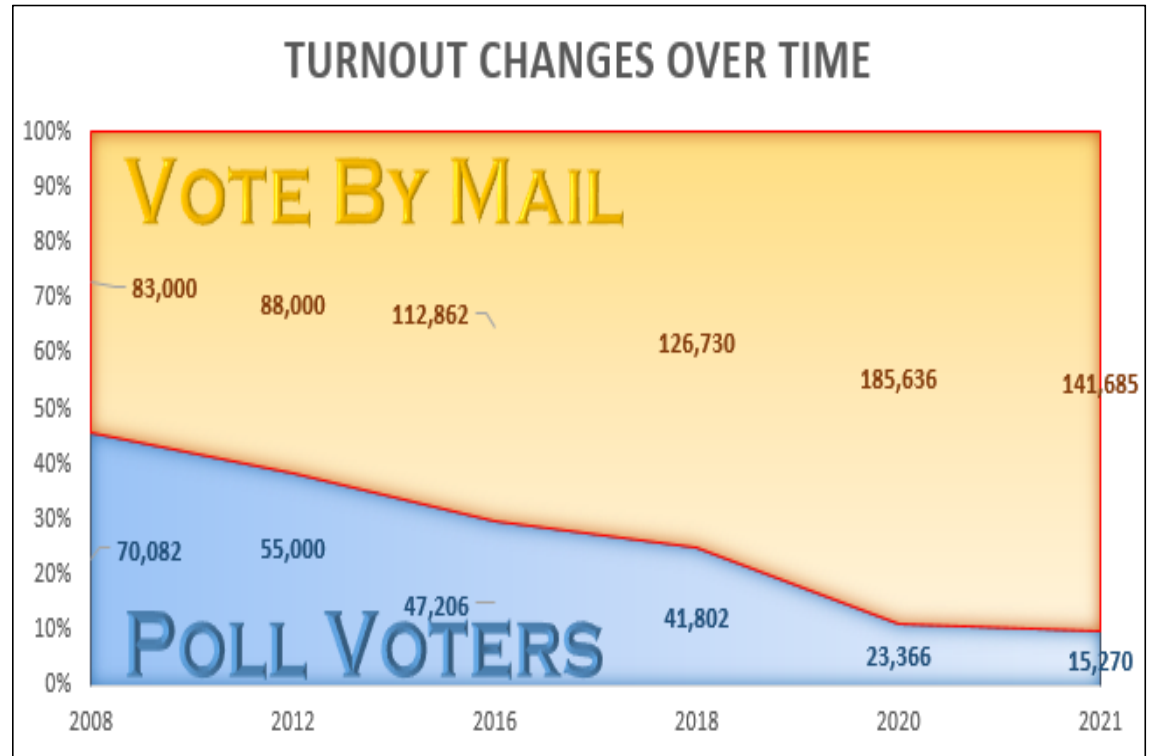
Core Values – Guiding Principles

- All Elections are Fair and Free to all eligible voters.
- All elections are Transparent and have Trustworthy outcomes.
- One vote per registered voter no matter the voting method.
- Maintain high professional standards, accountability, security and integrity of all elections.
- Encourage highest level of eligible voter participation
 - 29 days of early in-person voting for all voters;
 - Vote by Mail ballots for all voters;
 - Increase visibility to vote by mail return locations;
 - Same Day Registration and In-person voting easily available to all voters.



Legislative Changes Impacts on Voting

- 2020 to current – all voters received Vote by Mail (VBM) ballots.
- 2022 – mandatory VBM for all elections (AB 37).
- In-Person voting dropped to 10% of turnout.
- Potential Federal legislation aims to increase in-person voting opportunities.





Impacts on Changes

	PROS	CONS
Keep Same Number of Locations	<ul style="list-style-type: none"> • Familiarity to voters – vote at same locations; • Plenty of options for ballot drop-off; • All locations maintained in existing neighborhoods; • Built-in redundancy for emergency situations; • Fewer chances of lines at polling places; • Covered for future population growth (14% increase in past 5 years). 	<ul style="list-style-type: none"> • Expensive - \$10.00 per registered voter / \$71.00 per in-person voting voter; • Harder to recruit poll places and pollworkers during pandemic; • Some locations have less than 100 voters throughout the day.
Reduce Number of Locations	<ul style="list-style-type: none"> • Reduce County Costs ~\$11,000 per location; • Focus staff resources on VBM processing; • Reduce burden on county facilities for training pollworkers; • Logistically easier for ROV to support fewer locations (pollworker recruitment/training). 	<ul style="list-style-type: none"> • Voter Confusion – increased costs for messaging changes/moved location; • Conflicts with potential Federal legislative direction; • Public perception of reducing opportunities to vote; • Potential for lines and poor voter experiences; • Locations would need to be large and require more equipment deployed to each location; • In-Person voting may increase post-pandemic.



Possible routes to take

- Option A: No Change, maintain Average 97-105 locations
- Option B: Reduce to 90 locations
- Option C: Phase in reductions:
 - 2022 Primary – 90 Locations
 - 2022 General – 80 Locations
 - 2023 – revisit further reductions w/ Board
- Option D: Reduce to 70 locations
- Option E: Reduce to 50 locations

- Minimum number of locations based solely on voter registration is 45.

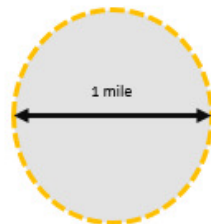


Sample View of Changes – Case Study Vacaville

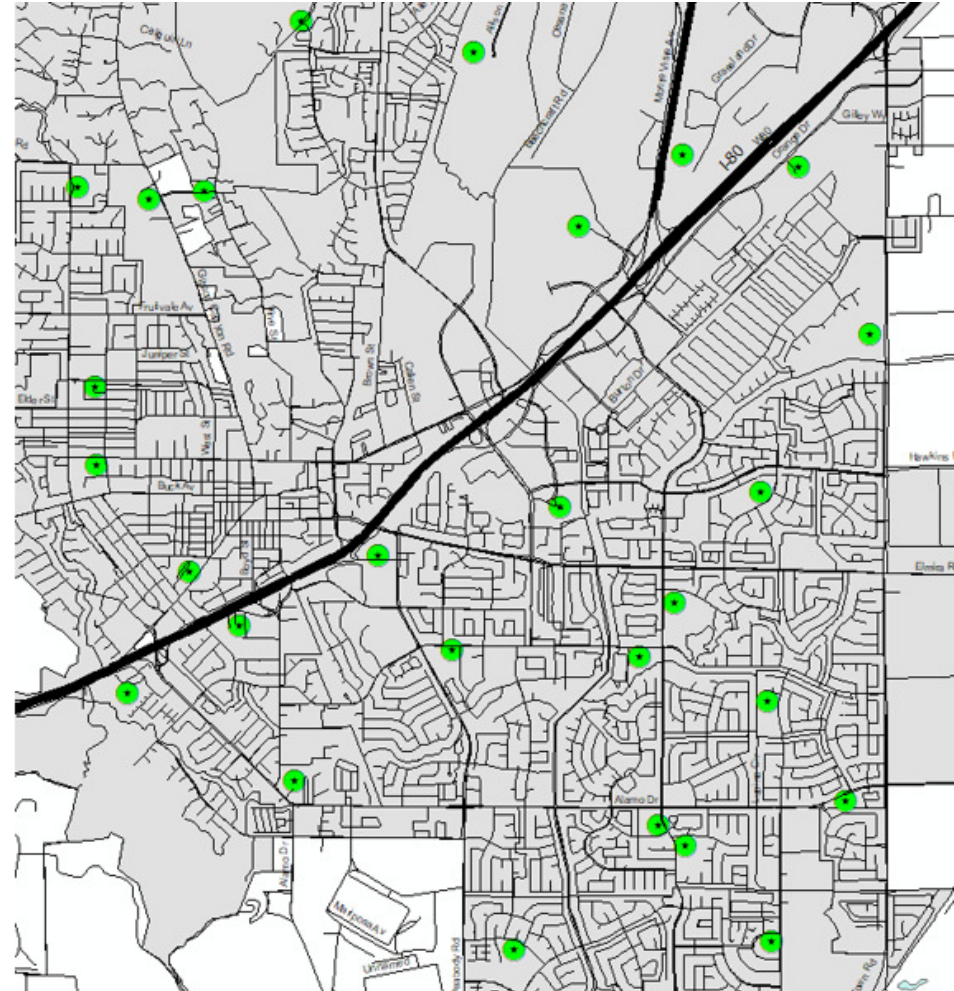
Option A: 97 County locations /
27 Vacaville Locations

Countywide Impact:

- **\$11,000** – avg. ROV cost per poll place.
- **2,695** – Average# of voters assigned to each voting location.
- **157** – Average # of voters voting in-person per location.



January 25, 2022





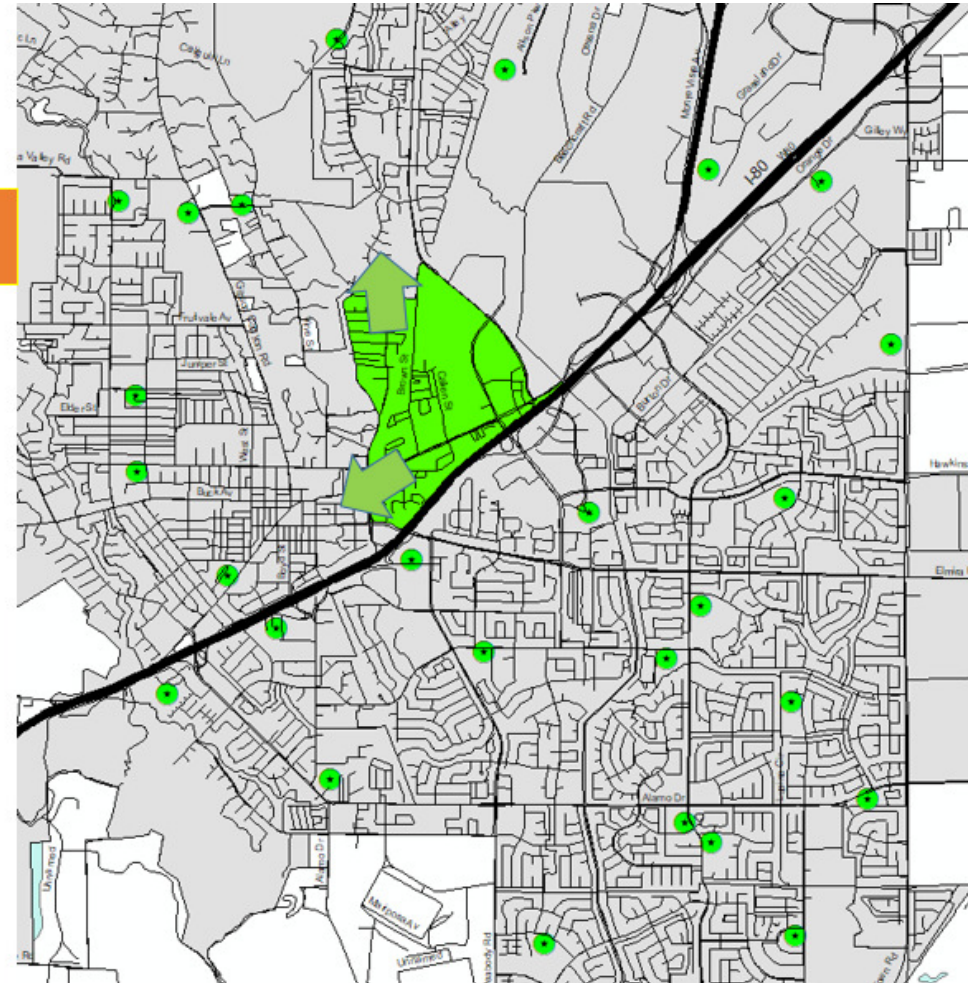
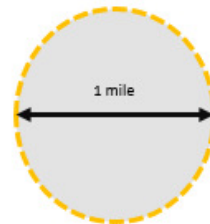
Sample View of Changes – Case Study Vacaville

Option B/C: 90 County locations /
26 Vacaville Locations

1 – Vacaville locations Impacted
1,500 – Vacaville voters Impacted

Countywide Impact:

- **\$78,000** – Est. savings per election.
- **3,111** – Average# of voters assigned to each voting location.
- **222** – Average # of voters voting in-person per location.



January 25, 2022



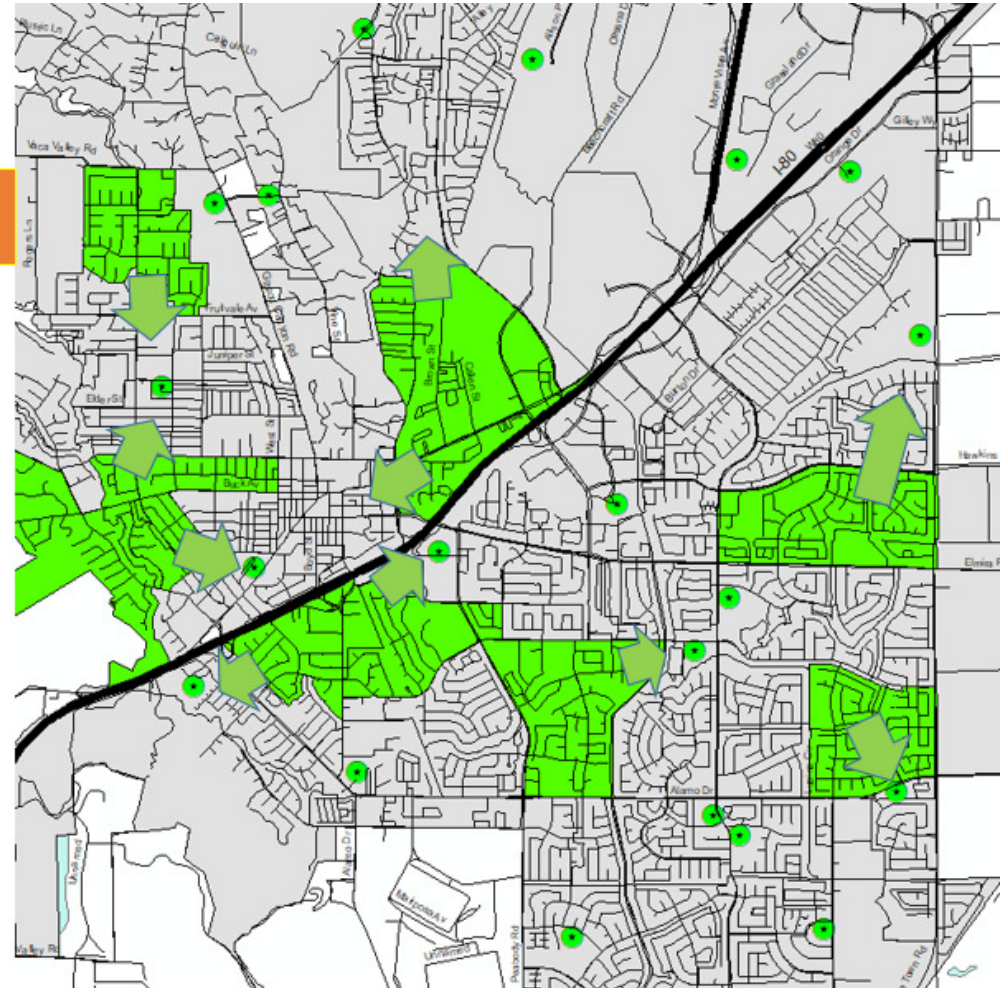
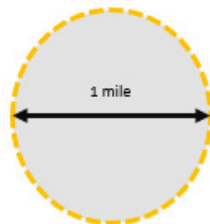
Sample View of Changes – Case Study Vacaville

Option D: 70 County locations /
20 Vacaville Locations

6 – Vacaville locations Impacted
11,500 – Vacaville voters Impacted

Countywide Impact:

- **\$300,000** – Est. savings per election.
- **4,000** – Average# of voters assigned to each voting location.
- **285** – Average # of voters voting in-person per location.



January 25, 2022



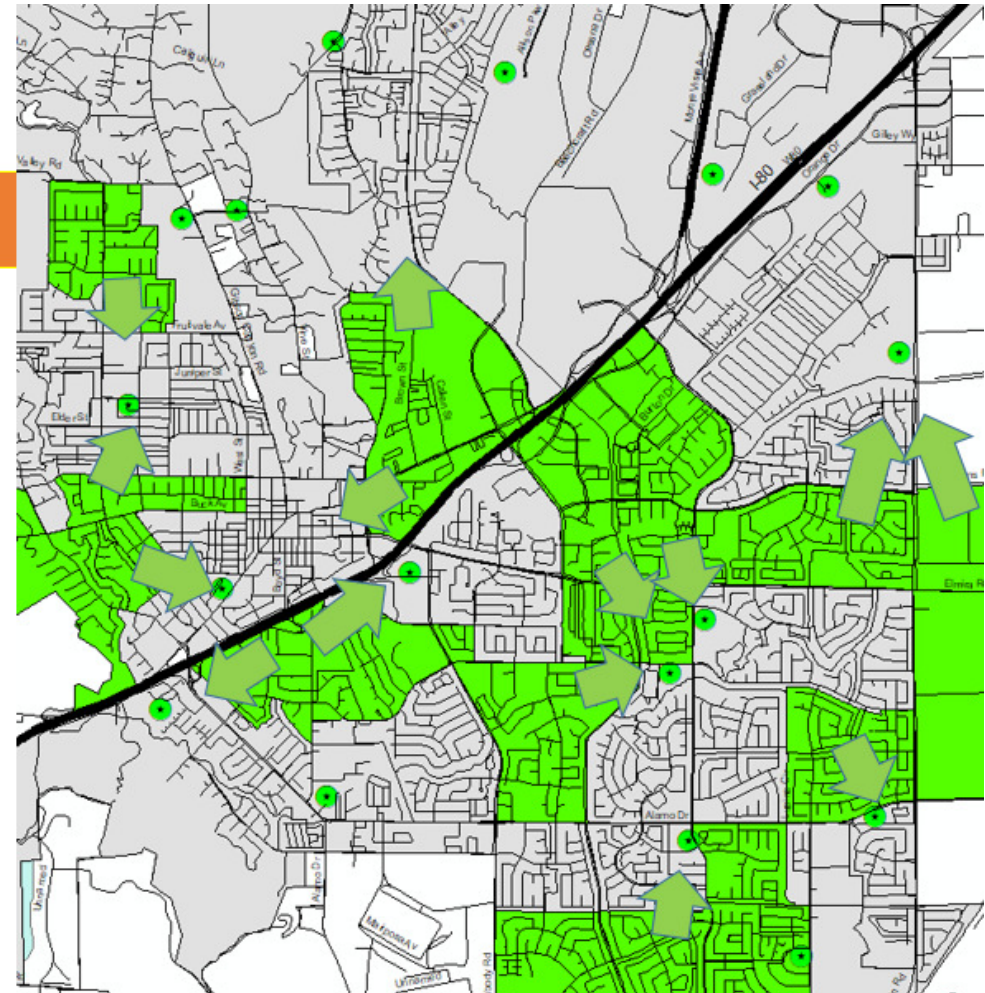
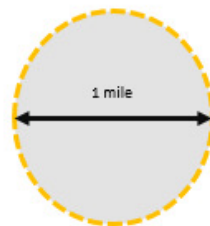
Sample View of Changes – Case Study Vacaville

Option E: 50 County locations /
15 Vacaville Locations

12 – Vacaville locations Impacted
22,000 – Vacaville voters Impacted

Countywide Impact:

- **\$517,000** – Est. savings per election.
- **5,600** – Average# of voters assigned to each voting location.
- **400** – Average # of voters voting in-person per location.



January 25, 2022



Assembly District 11 – Special Vacancy Primary

- April 5, 2022 - Primary Election date
- June 7, 2022 – General Election date if needed
 - (top two winners, if no one receives more than 50% of vote).

- Total Election Cost: \$1,458,050
 - \$692,050 State funds remaining from 2021 Recall Election
 - \$766,000 General Funds needed.

- Costs are not to exceed value and may be adjusted based on direction received today.



Concluding – Major Election Dates

	April 5 - AD 11 Vacancy	June Primary
Candidate Filing Begins	January 25	February 14
Candidate Filing Ends	February 10	March 11
Election Set / No Changes to poll places	February 10	March 12
1 st notice to voters about poll place changes (required)	February 11	March 18
2 nd notice to voters about poll place changes (optional notice).	--	April 1
Ballots begin being mailed to active registered voters	February 19	April 15
Ballot return locations are available (drop boxes)	March 7	May 9
First permitted date to process ballots – scanned ballots secured until	March 7	May 9
Last day to register to vote for the election.	March 21	May 23
Last day to mail ballots to voters.	March 29	May 31
Ballots postmarked by Election Day or dropped off before 8pm 7 days after the election will be processed.		
Polling Places open from 7am – 8pm		
Estimated date for certified results in Solano County.	April 14 (required date)	June 24



Questions?

www.solanocounty.com/elections

ROV Website:

- Register to vote
- Verify registration
- Find your polling Place;
- Election details;
- Sample Ballots;
- Maps;
- Candidate information

Registrar Of Voters

Registered Voters as of 12/27/2021 (updated weekly)

Democrat: 127,236 Republican: 57,503 Other: 76,909 | Total: 261,648 ↓

REGISTER TO VOTE	VERIFY VOTER REGISTRATION	MILITARY AND OVERSEAS CITIZENS	UPDATE YOUR MAILING ADDRESS
DISTRICT LOOKUP	LOOK UP VOTE BY MAIL BALLOT STATUS	SIGN UP FOR TEXT ALERTS	POLL WORKERS

All of our services are available by phone or email (Elections@solanocounty.com); (707) 784-6675

For Virtual Appointments, please fill out the [appointment request](#) form.

June 7, 2022 - Statewide Primary Election

All candidates can receive forms and information by making an [online appointment](#) with our office.

Key Dates Calendar
Candidate Filed Log (coming soon)
[Candidate Guide](#)
[Candidate Filing Forms Tutorial](#)
Candidate Nomination Documents (coming soon)

November 8, 2022 - General Election
coming soon

[2021 Redistricting Information](#)