



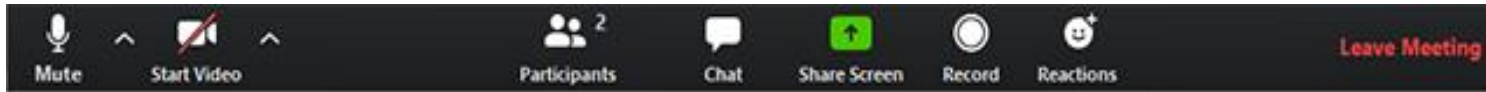
# Solano County Behavioral Health Mental Health Services Act (MHSA) Annual Update FY2019/2020 & New Three-Year Plan

**FY 2020/21**

**Tracy Lacey, LMFT | Sr. Manager & MHSA Coordinator**



# Participant Zoom Controls



1. When we get to Q&A parts of the meeting if you have a question please unmute yourself. ***Please mute yourself if you're not speaking.***
2. Click the arrow to change your audio settings (phone/computer).
3. To turn your webcam on or off, click Start/Stop Video.
4. Click the arrow to access your Video Settings.
5. To view the Participants pane.
6. To chat, first click "Chat" and then type in the chatbox.
7. Reactions (Thumbs up and down feature)
8. Leave Meeting

Again if you are having technical difficulties you can email the staff person listed in the chat or you can use chat to let us know you are having an issue

# Overview



Mental Health Services Act (MHSA) Refresher



MHSA Updates



Brief Overview of the County System of Care



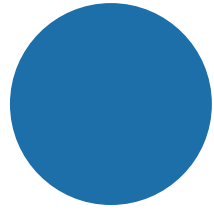
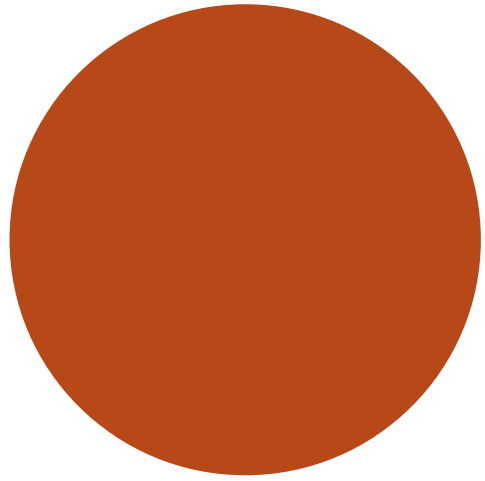
Outcomes for Services Rendered FY 2019/20



Breakout Groups: Community Voice



Bringing it Together: Group Discussion



# MHSA Refresher



# MENTAL HEALTH SERVICES ACT:

In 2004 California voters passed **Proposition 63**, the landmark Mental Health Services Act (MHSA) imposing a 1% tax on annual personal incomes in excess of \$1,000,000 to expand mental health services.

Requires each county to create a MHSA Plan every 3 years in order to provide a state-of-the-art, culturally responsive continuum of care that promotes wellness and recovery.

## MHSA Mission & Values

Community engagement and collaboration

Promotes cultural responsive services

Decreases stigma

Increases access to unserved and underserved groups

Creates individual and family-driven programs

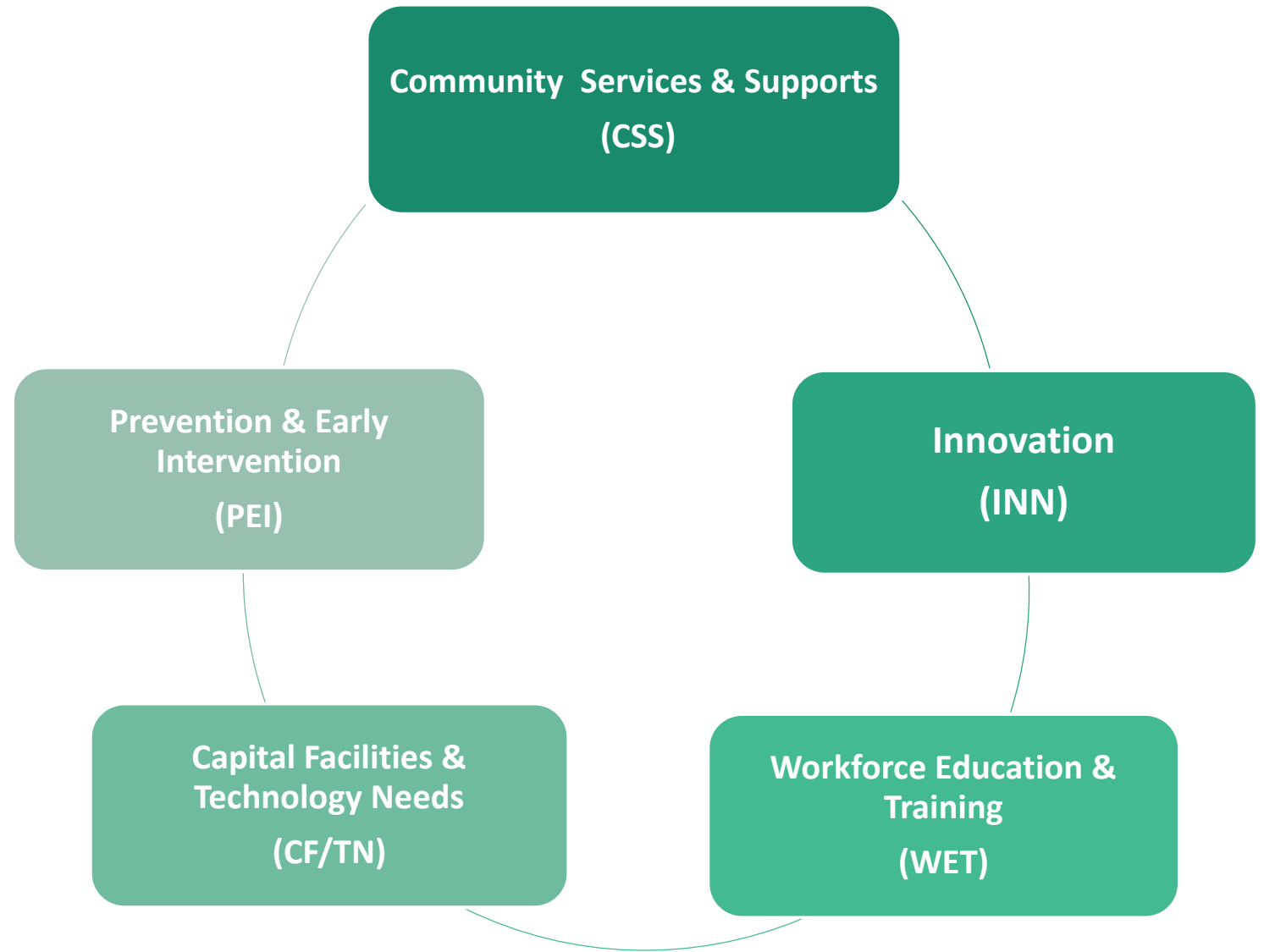
Philosophy of a wellness, recovery and resilience

Promotes an integrated service experience

Outcome-based programs



# MHSA Program Components



## Prevention & Early Intervention (PEI)

- **19%** of the total funds received annually
- Countywide Stigma Reduction & Suicide Prevention
- Support to prevent individuals from developing mental health conditions and/or to serve those with mild-to-moderate mental health conditions
- **51% of the funds must be spent on individuals 25 years and younger**

## Innovation (INN)

- **5%** of the total funds received annually
- Funds **new innovative** service strategies or models with an emphasis on increasing access to unserved/underserved
- Typically 3 year projects, and with special approval up to 5 years
- Counties have to do a separate CPP process and separate Innovation Plan that has to be presented to and approved by the state Mental Health Services Oversight and Accountability Commission (MHSOAC)
- Emphasis on sharing lessons learned with other counties and finding a way to make a program/project sustainable after INN project timeline ends

## Community Services & Supports (CSS)

- Largest funding stream, **76%** of total amount received annually
- Intended to provide support and services for individuals of all ages who have more serious or severe mental health conditions
- **51% of the funds must to be spent on funding Full Service Partnership (FSP) programs**

## Workforce Education & Training (WET)

- Used to help counties train staff in evidence-based models/practices, provide intern stipends to increase diverse workforce, and cultural responsiveness training. \*Only a 10 year funding stream **no new money since 2014.**

## Capital Facilities & Technological Needs (CF/TN)

- Used to help counties develop electronic health records and enhance their facilities used as sites to provide direct services for seriously mentally ill (SMI) consumers. \*Only a 10 year funding stream **no new money since 2014.**

**\*Counties can transfer up to 20% of CSS funds to support ongoing WET & CF/TN initiatives and/or to Prudent Reserve**



# Community Program Planning (CPP): What is Your Role in MHSA?



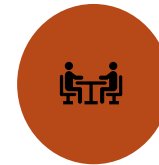
Stakeholders include: consumers, family members, providers, law enforcement, local education agencies, faith communities, etc.



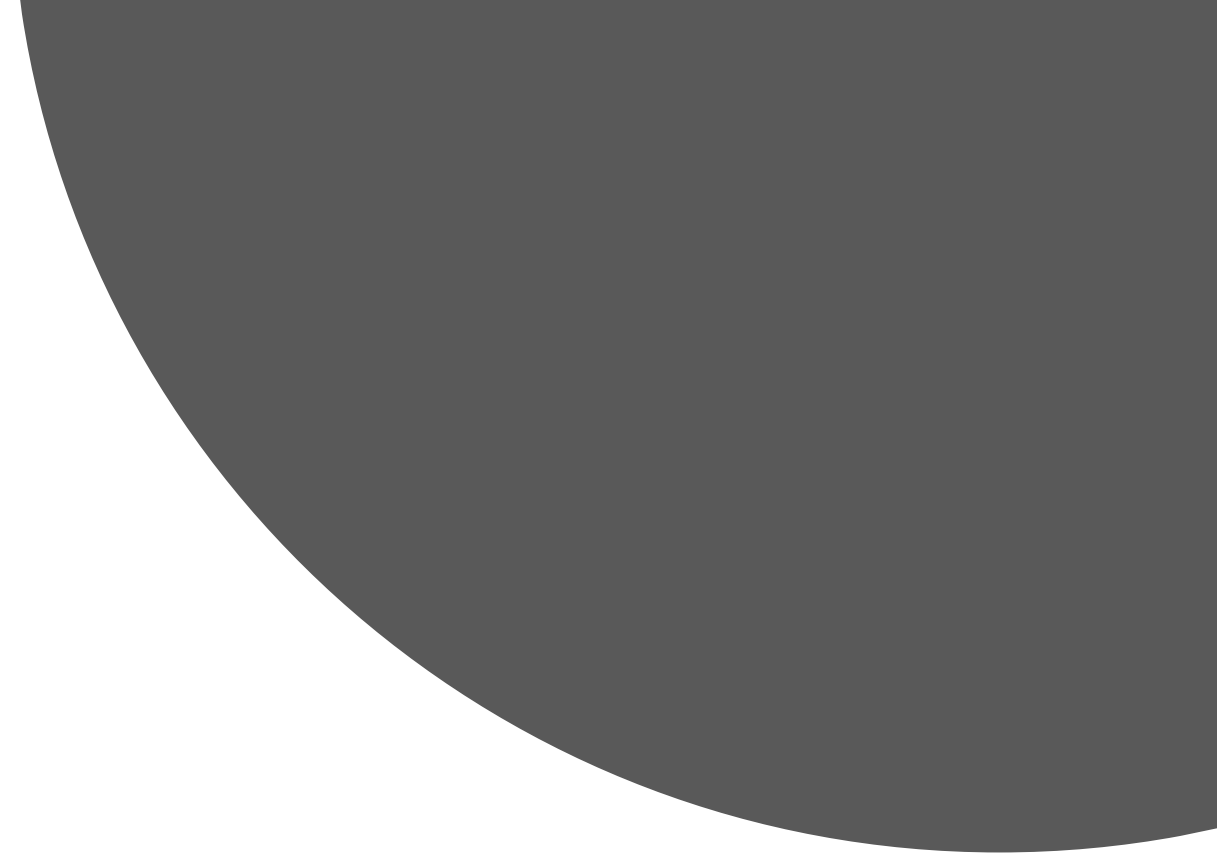
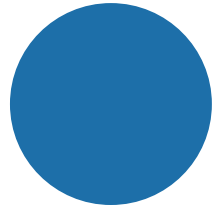
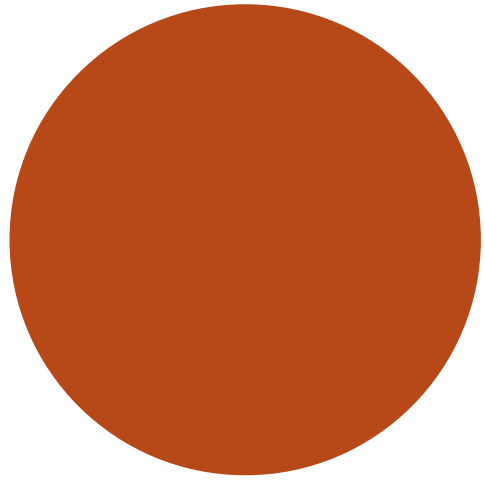
CPP for new 3-Year Plans, review of Annual Updates, and other activities to determine how local MHSA funds will be spent



MHSA Plans and Reports are posted for 30-day public comment and a Public Hearing is held before documents are routed to Board of Supervisors and state



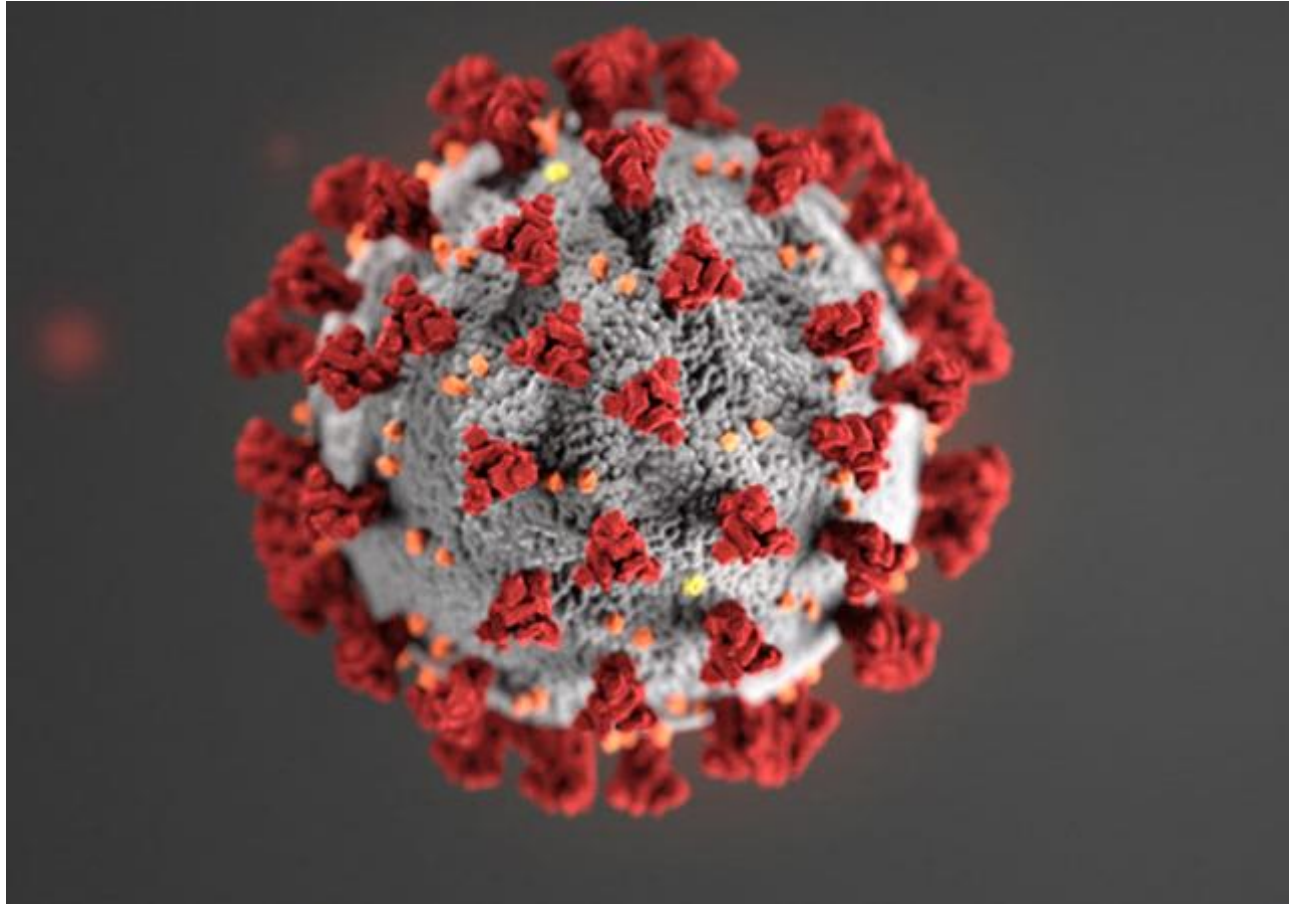
MHSA Steering Committee comprised of community stakeholders. Provide guidance regarding funding or defunding programs/services.



# MHSA Updates

Impact of COVID-19 &  
State and Local MHSA  
Updates

# Impact of COVID-19



Solano County Behavioral Health had a **\$4.5Million** budget shortage

To address this and to preserve core services the following actions were taken:

- Moved core County funded positions and one adult contract to MHSA
- Conservative reduction for non-MHSA funded contracts
- Froze vacant County positions
- Plan step downs from County level services to primary care and reduction in inpatient hospitalizations

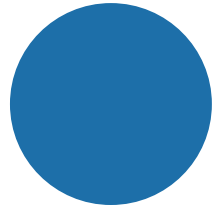
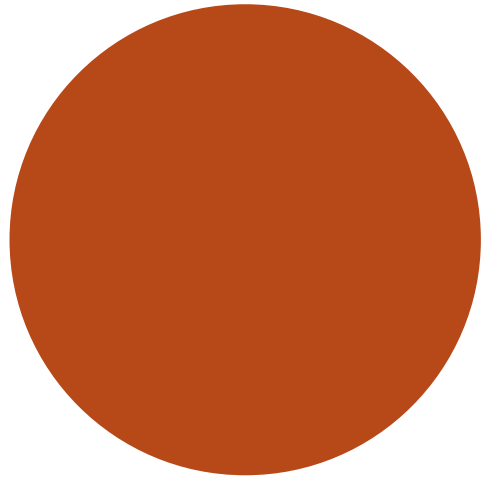
It is anticipated that in FY 2022/23 there will be a decrease in incoming MHSA funds for each county due to COVID-19

# State Level Updates

- **State OSHPD Workforce Education and Training (WET) 5 Year Plan**
  - OSHPD is providing \$210M and required CA counties to collectively provide a 33% match
  - 5 Regions in CA submitted joint WET Plans
  - Solano is part of the Bay Area Region
    - Primary focus is on reinstating the mental health loan assumption program
    - Solano's contribution **\$128,910**
- **Legislative Updates & DHCS Information Notices (IN)**
  - **IN 19-019**
    - DHCS will conduct separate triennial program reviews of local MHSA programming started January 2019 and Solano is up for review February 2021
  - **IN 19-037**
    - Caps the local Prudent Reserve at **33%** of the average Community Services Supports (CSS) revenue received in the preceding 5 years
  - **AB 81 Public Health Funding-MHSA flexibility due to COVID**
    - Extended time to submit new 3-Year Plans & Annual Updates
    - Allowed transfer of Prudent Reserve to PEI & CSS
    - Flexibility in how CSS funding is allocated during FY 2020/21
    - Extended funds that were reverting in June 2020 through June 2021
  - **AB 2265 Peer Specialist Certification** signed by Governor Newsom September 25, 2020!!

# Local MHSA Updates

- **New Programs**
  - Bridge Transitional Housing – Caminar (May 2020)
  - Mobile Crisis – Uplift Family Services (Jan 2021)
- **Program/Agency Closures**
  - Respite Housing Program – BACS (Feb 2020)
  - Wellness Center Programs – Circle of Friends agency closed (January 2020) SCBH contracted with Caminar to assume those Centers
- **Expansions Due to COVID-19**
  - **12 County staff positions:** Planning Analyst, transitioned 4 bilingual staff to MHSA, added 1 staff to ICC On-Duty, transitioned 2 staff to provide crisis aftercare and relapse prevention rather than contract out entire program, 2 Patient Benefits Specialists as an expansion of outreach staff, transitioned 1 staff to Continuum of Care Reform (CCR), and 1 staff for step downs from ICC
  - Caminar Community Case Management (CCM) contract – adult services



# County System of Care





## Who We Serve

- ▶ Children/youth ages 0-17 years old
- ▶ Adults 18 years and older
- ▶ Individuals who reside in Solano County and have Medi-Cal or Medicare insurance
- ▶ Individuals who are uninsured
- ▶ Individuals who are unserved/underserved
- ▶ Individuals who meet criteria for specialty mental health and who have more serious or severe mental health conditions

# Services the County is Responsible to Fund



MESA PEI services and supports; programs that do not bill Medi-cal



Outpatient and high-end community-based services



Inpatient hospitalization stays for Solano beneficiaries including misdemeanor Incompetent to Stand Trial cases



Placements in Mental Health Rehab Centers (MHRC)



A portion of Augmented Board & Care (ABC) placements



A portion of residential placement costs for children/youth involved with Child Welfare/Probation



A hand is shown holding a coin over a stack of various coins. A small green plant with several leaves is growing out of the stack of coins. The background is white.

# Funding Sources

- ▶ Revenue generated from the provision of Medical/Medicare reimbursable specialty mental health services
- ▶ Mental Health Services Act (MHSA) funds over a 3<sup>rd</sup> of the overall BH budget
- ▶ Mental Health Block Grant (MHBG) funding
- ▶ Intergovernmental Transfers (IGT) funds (when available)
- ▶ County General fund
- ▶ Other Grants: Prop 47, Justice Assistance Grant (JAG), Mental Health Student Services Act (MHSSA) Grant, OSHPD/Peer Support Training, etc.

# MENTAL HEALTH SERVICES: County Mental Health Plan (MHP)

Solano County has a Mental Health Plan (MHP) Contract with the State Department of Health Care Services (DHCS) to provide services to Medi-Cal/Medicare eligibles who meet “medical necessity” which means:

- ▶ Individual has an included mental health diagnosis which is serious in nature;
- ▶ Individual demonstrates a significant impairment in spheres of functioning (self, home, work/school, peer);
- ▶ The intervention/treatment provided will be focused on the mental health condition, and treatment is expected to correct or improve the condition and the individual would not be better served by physical healthcare provider/s.
  - ❖ This includes someone with a co-occurring substance use disorder (SUD) in which both MH and SUD has to be treated simultaneously



## Access Line Hours

Regular Business Hours:  
8:30am-5:00pm

After Hours, Weekends & Holidays: 5:00pm-8:30am (Crisis Unit answers calls after hours)



## Access Timeliness

Emergent Calls:  
Immediate Crisis Intervention or Evaluation

Urgent Calls: Offered an intake assessment appointment within 3 calendar days

Routine Calls: Offered an intake assessment appointment within 10 business days



## Centralized Assessment Team (CAT) <18

County clinicians conduct intake assessments for children/youth referred through the Access Line



## Adult Open Access

Fairfield Clinic 8am-3:15pm Mon-Friday

Vallejo Clinic 8am-3:15pm Mon-Friday

Vacaville Clinic 8am-3pm Mondays & Thursdays

**All clinics close for lunch 12-1PM**

*Telehealth is available*



## Forensic Triage

Central access point for forensic court and high level of care referrals:

- AOT/Laura's Law
- Diversion
- Drug/MH Court
- Prop 47
- Probation

# Behavioral Health Access

## 1-800-547-0495

# SUBSTANCE USE SERVICES: Regional Model

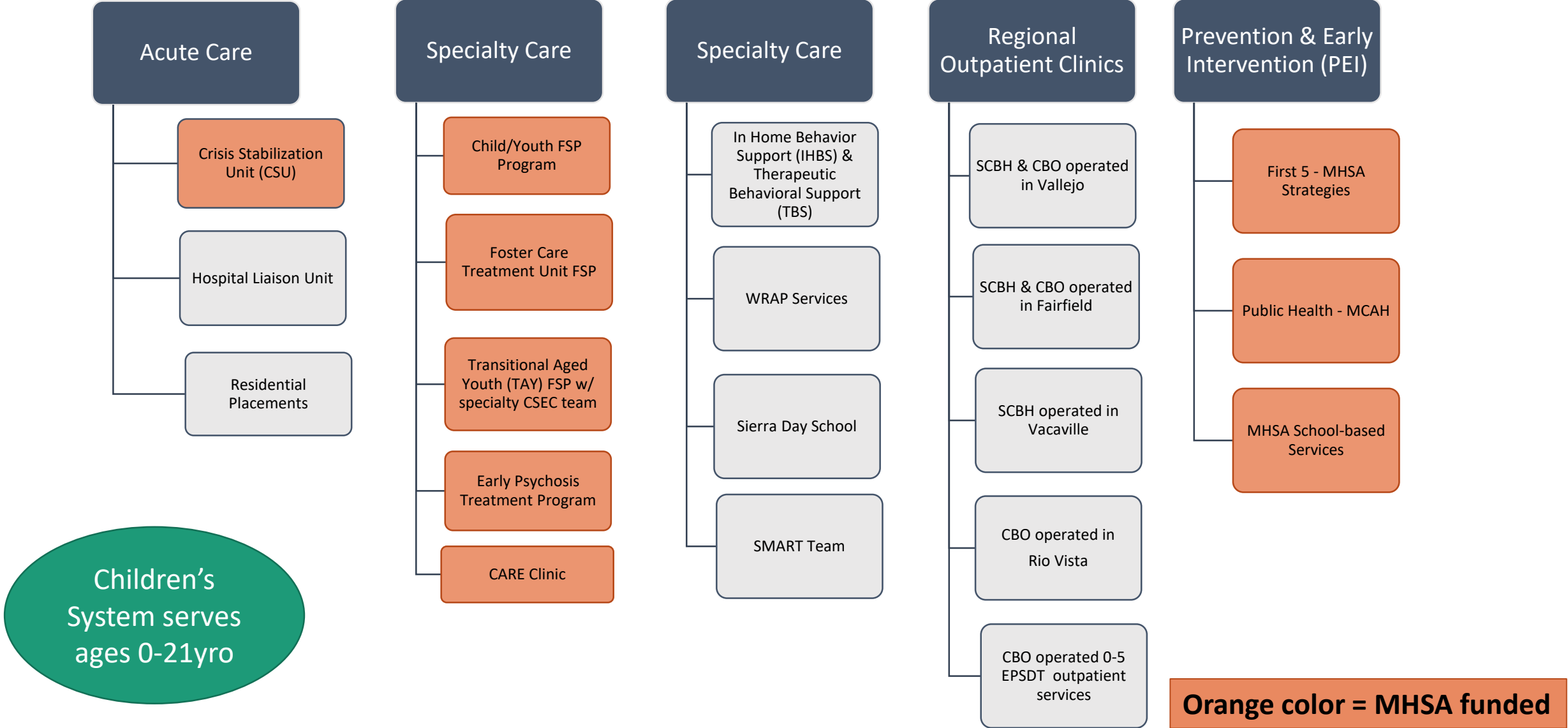
Department of Health Care Services Drug Medi-Cal Organized Delivery System (ODS) Waiver Implementation Plan for Regional Model encompasses Humboldt, Lassen, Mendocino, Modoc, Shasta, Siskiyou, Solano, and Trinity Counties physical healthcare provider/s.

**Solano County will be contracting with Partnership Health Plan of California** to offer the Medi-Cal ODS Waiver through the State Department of Health Care Services (DHCS) to provide services to Drug Medi-Cal/Medicare eligibles who meet “medical necessity” which means:

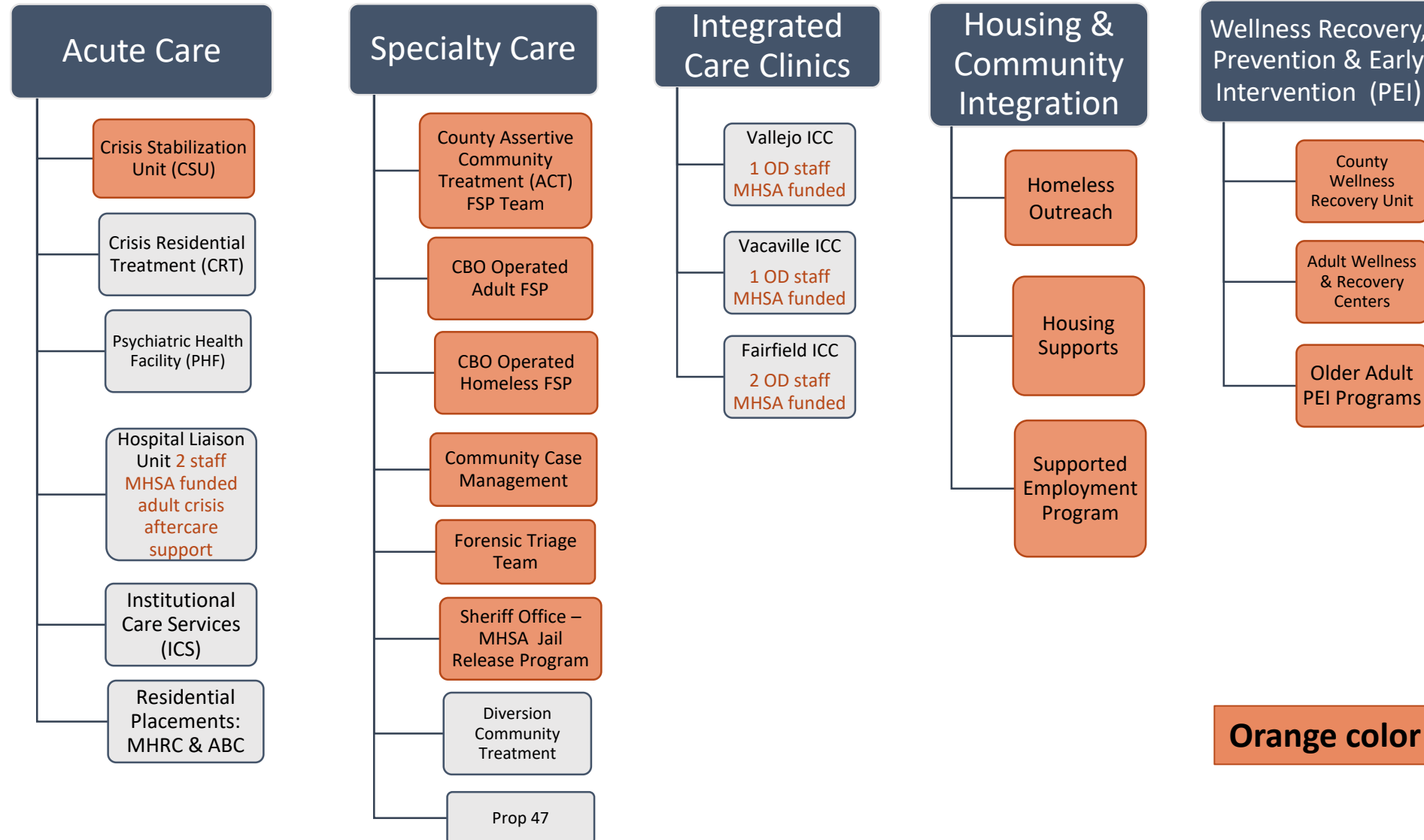
- ▶ Individual has an included substance use diagnosis which is serious in nature;
- ▶ Individual demonstrates a significant impairment in spheres of functioning (self, home, work/school, peer);
- ▶ The intervention/treatment provided will be focused on the substance use condition, and treatment is expected to correct or improve the condition and the individual would not be better served by physical healthcare provider/s

Central Access Line (BEACON)  
**1-855-765-9703**

# Solano BH Teams/Service Programs – Children & Youth



# Solano BH Teams/Service Programs - Adults



Orange color = MHSA funded



## Full Service Partnership (FSP) Programs

- All ages
- “Hospital without walls”
- Intensive treatment and case management
- Multi-disciplinary team
- 3 or more services per week
- 24/7 warmline
- “Whatever it takes” approach
- Housing, educational, and employment support

### County Funded FSP Programs Include:

- 2 County-operated Child/Youth FSPs
  - Specialty Foster Care Program
- 1 CBO-operated Transition Age Youth (TAY) FSP
  - Specialty CSEC Team
- 1 County-operated Adult FSP
  - Specialty Forensic Team
- 2 Adult CBO-operated FSPs
  - Specialty Homeless Program

Adult FSPs are guided by the “Assertive Community Treatment (ACT)” evidence-based practice

Youth FSPs are guided by “Transitions to Independence Process (TIP)” evidence-based practice



### **Help Me Grow (HMG) Resource Line**

HMG Solano connects families of children 0-5yro to requested services, as well as provides developmental screenings, further investigates family needs, provides family navigation for families with complex needs, and follows up with each family to ensure they were connected to services.

**HMG Line**  
**844-501-5437 (KIDS)**



### **NAMI Solano**

Provide advocacy and support for peer consumers and families touched by mental illness. Peer and family classes provided, presentations and stigma reduction activities.

**NAMI Resource Line**  
**707-422-7792**



### **LGBTQ Outreach & Access Program**

CBO-operated provides support and social groups for the and brief counseling for the LGBTQ community.

Provides outreach and trainings for community to reduce stigma.



### **African American Faith Based Initiative-Mental Health Friendly Communities (MHFC)**

Consultants provide training and consultation for faith center leaders to reduce stigma and increase access for the AA community. Provide trainings for providers on best practices working with AA community.



### **Outreach Services & Targeted Systems Development**

- Hispanic Outreach and Latino Access (HOLA)
- KAAGAPAY Asian American
- Accessible Resources for the Community's Homeless (ARCH) homeless outreach
- Expansion of bilingual staff
- ICC On-Duty staff
- Support for children and families involved with Child Welfare system

# Additional MHSA Services & Supports



# BH Funded Housing Supports



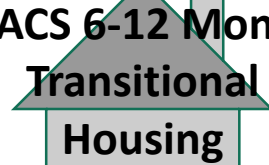
## Caminar Bridge Housing 30-90 Days

**MHSA Funded:** 12 beds, on-site peer support



## Caminar Gateway 30-90 Day Transitional Housing

**MHSA Funded:** One 2-bedroom unit with 4 beds



## BACS 6-12 Month Transitional Housing

**MHSA Funded:** Seven 2-bedroom units for a total of 16 beds. 4 beds for HOME FSP consumers who are homeless or risk of homeless, and 4 beds for Whole Person Care consumers



## Shelter Solano 9-12 Month

**MHSA Funded:** 15 beds

**Prop 47 Funded:** 8 beds



## Room & Boards

**MHSA and Core Funded:** SCBH will pay rent temporarily to prevent homelessness for SMI consumers



## Board & Cares

**MHSA and Core Funded:** SCBH will pay for patches to augment housing costs for SMI consumers



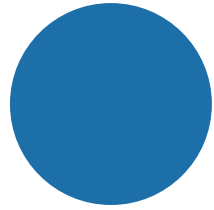
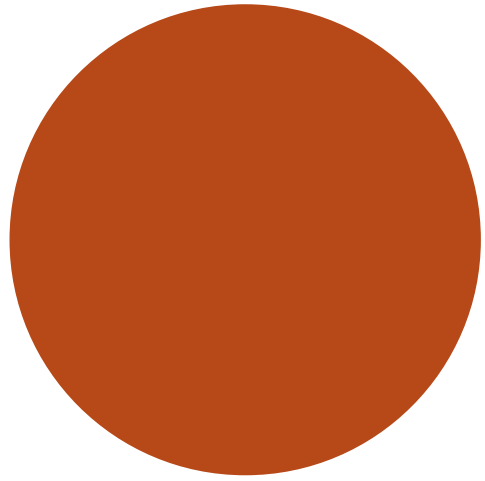
## Caminar Permanent Housing

### CRITERIA FOR PERMANENT HOUSING

- Serious Mental Illness (SMI)
- History of inpatient hospitalization
- Individual is fairly stable and ready to live independently
- -Does not require 24/7 care
- No Sex Offenders
- No Parolees (funding prohibits)

TIME FOR  
A BREAK

10 Minute  
Break



# Outcomes MHSA- funded Programs

Services Rendered  
During FY 2019/20

# MHSA Expenditures FY 2019/20

Total MHSA expenditures for FY 2019/20 was **\$21,899,497**

Funding Component	Expenditures FY 2019/20
CSS	\$15,570,627
PEI	\$4,139,490
INN	\$2,057,210
WET	\$132,170
CF/TN	\$0

# Suicide Prevention Strategies

In Calendar Year (CY) 2019 there were **56 suicide deaths** in Solano County and **30 suicide deaths** this CY (January 2020 thru September 15th)

MHSA funds various suicide prevention trainings:

- **safeTALK and/or Applied Suicide Intervention Skills Training (ASIST) Suicide Prevention Trainings**– 1 safeTALK training was provided and 4 rounds of ASIST 2-Day trainings were provided with a total of 78 participants attending the trainings.
- **National Suicide Prevention Lifeline** – In FY 2019/20 there were **3,330 calls from Solano County residents** received by the national Suicide Prevention Lifeline 1-800-273-TALK/8255. Of the 3,330 calls, **2,427** were general calls, **848** were calls from veterans, and **55** of the calls were from Spanish-speaking callers.

In addition to funding trainings, the MHSA Team holds the countywide **Suicide Prevention Committee** and the **Suicide Prevention Strategic Plan**  
<http://www.solanocounty.com/civicax/filebank/blobdload.aspx?blobid=272>



# PEI Programs At a Glance

PROGRAM/SERVICE	AGES	# SERVED PREVENTION	# SERVED INTERVENTION	PROVIDERS
Early Childhood Strategy	0-5	4,039	309	First 5 Solano & their sub-contractors
Pregnant/Postpartum Maternal Support Strategy	0-5 Mothers	43	43	Solano County Public Health: Maternal Child and Adolescent Health
School-Based MH Services	6-21	1,517	290	A Better Way, Rio Vista CARE, Solano County Office of Education
Early Psychosis Treatment Program	12-30	230	37	Aldea Children & Family Services in partnership with UC Davis Behavioral Health Center of Excellence
Older Adult Programming	60+	492	155	Choice in Aging & Faith in Action
African American Faith-Based Initiative	All	2,150	N/A	Mental Health Friendly Communities (MHFC) Consultants: Gigi Crowder, Pastor Horacio Jones, Minister Monique Tarver
Family & Peer Support	All	343	150	National Alliance on Mental Illness (NAMI) Solano
LGBTQ Outreach/Access Program	All	1,462	27	Solano Pride Center

# Stigma & Discrimination Reduction

## Family & Peer Support Program: NAMI Solano

- Of **80** participants who completed educational classes in entirety, **100%** (80) demonstrated an overall increase of knowledge.

## African American Faith-based Initiative: Mental Health Friendly Communities (MHFC) Consultants

- Engaged **5** new faith centers to start the process of becoming MHFC, however these new centers were not able to complete the MHFC certification process in part due to COVID-19. Consultants continued support for **7** existing MHFC faith centers.
- Provided “Mental Health 101” for **25** faith leads and **100%** demonstrated increased knowledge.

End  The Stigma

A collection of colorful chalk sticks in various colors including red, orange, yellow, green, blue, purple, and white, scattered on a light-colored, textured surface. The chalk sticks are of different lengths and some show signs of use.

# PEI Outcomes & Impact on the Community

---

## Early Childhood

### First 5 Solano & Partners

- Provided Triple P Level 2 parenting seminars for **788** parent/caregivers and **99% (779)** demonstrated improved knowledge.
- Help Me Grow phone line received **1,784** calls and **75% (1,335)** resulted in a referral to at least one program/service.

### Public Health: MCAH

- **43** pregnant or new mothers received 1:1 counseling and/or *Mothers & Babies* groups



# PEI Outcomes & Impact on the Community

## **LGBTQ Outreach & Access: Solano Pride Center**

- Collaborated with **16** Solano schools to engage in the *Welcoming Schools* program to promote LGBTQ inclusion and bullying prevention
- A total of **27** individuals received brief counseling service and of the **14** individuals who had a pre/post measure, **79%** (11) demonstrated improvement in functioning

## **Early Psychosis Treatment Program: Aldea Children & Family Services**

- Of the **14** consumers evaluated with the *Clinical Global Impression (CGI)* tool at the 6-month mark **79%** (11) demonstrated improvement relative to overall symptom severity, and of the **11** consumers evaluated with the *CGI* at the 12-month mark **73%** (8) demonstrated improvement
- **None** of the consumers served were hospitalized for 7 days or more

# PEI Outcomes & Impact on the Community

## School-based Mental Health Services: A Better Way, Solano County Office of Education & Rio Vista CARE

### *Cumulative School-based Services Prevention Activities:*

- Total number of school personnel who participated in trainings: **759**
- Total number of parents who participated in trainings: **167**
- Total number of students who participated in workshops: **501**

### *Cumulative School-based Services Early Intervention Activities:*

- Total number of unduplicated students who received early intervention services: **290 up from 244** the fiscal year prior which is important to note given school closures due to COVID.

### **Additional Support for Schools**

- **35** culturally responsive school-based wellness centers K-12 and adult ed sites
- Solano County received the Mental Health Student Services Act (MHSSA) grant which provides **\$1Million** a year for four years to increase suicide prevention efforts, screen youth at risk for drop out, provide crisis services on campus. The program launched September 2020



**\$1.8M+ or 38% of the PEI funds are budgeted to support student mental health**

# PEI Outcomes & Impact on the Community

## Older Adult Programming

### Peer Counseling for Seniors: Faith in Action

- Peer volunteers provided home visits for **60** homebound seniors (pre-COVID) and provided **4,239** reassurance calls for **83** seniors
- Of the **33** seniors who received 1:1 peer counseling and completed a pre/post *Quality of Life Scale (QoL)*, **86%** (31) demonstrated an overall improvement in depression symptoms

### Prevention & Early Access for Seniors (PEAS): Choice in Aging

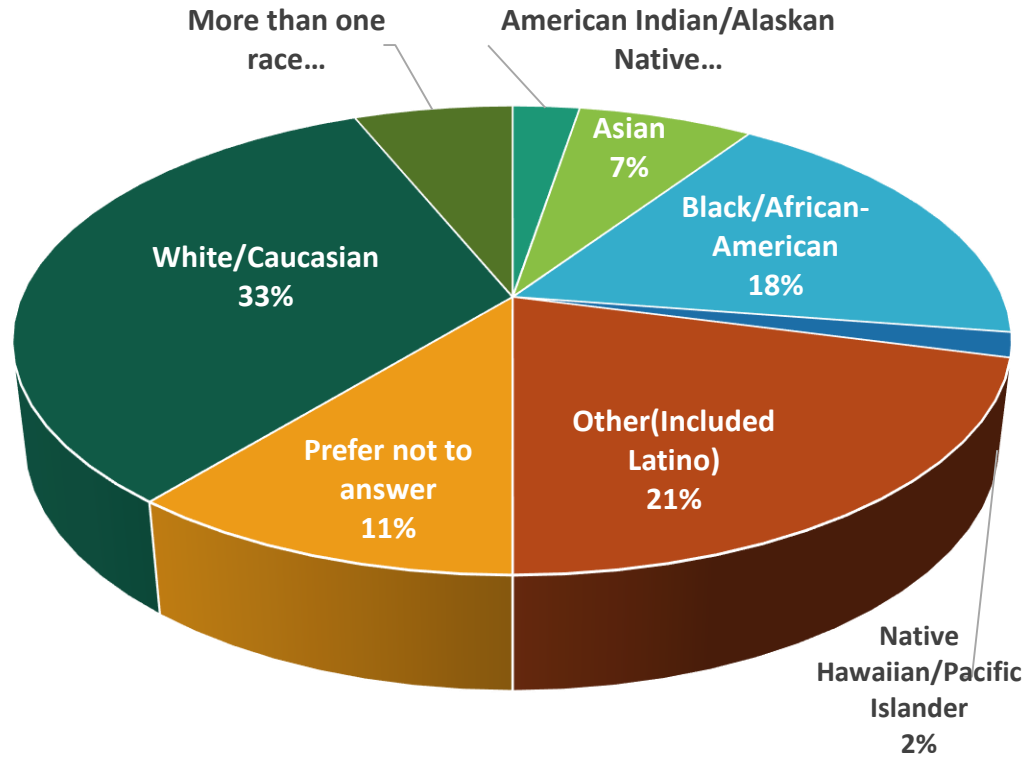
- Screened **165** seniors and served **156** seniors with brief preventative case management (45-60 days)
- **32** seniors received 1:1 counseling

### COVID-19 Response

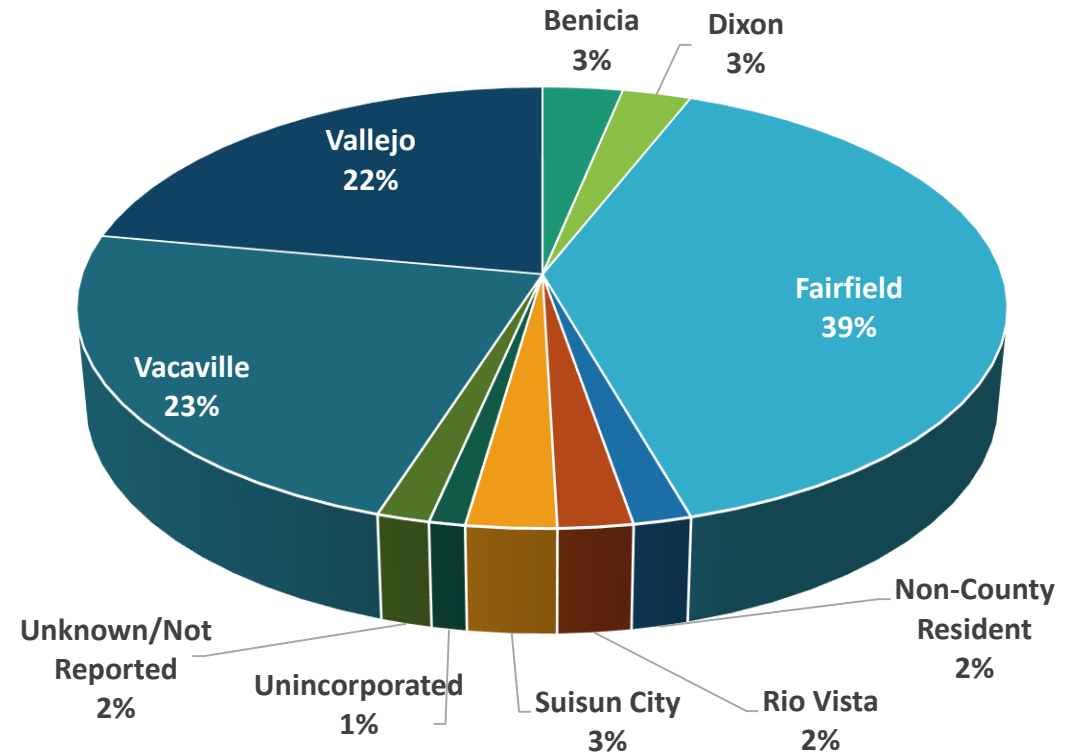
Both programs made concerted efforts to continue to outreach to one of the most vulnerable populations impacted by COVID including quickly standing up telehealth platforms and Faith in Action recruited volunteers to deliver groceries and deliver meals for homebound seniors

# PEI Direct Service Recipients by Race & City of Residence

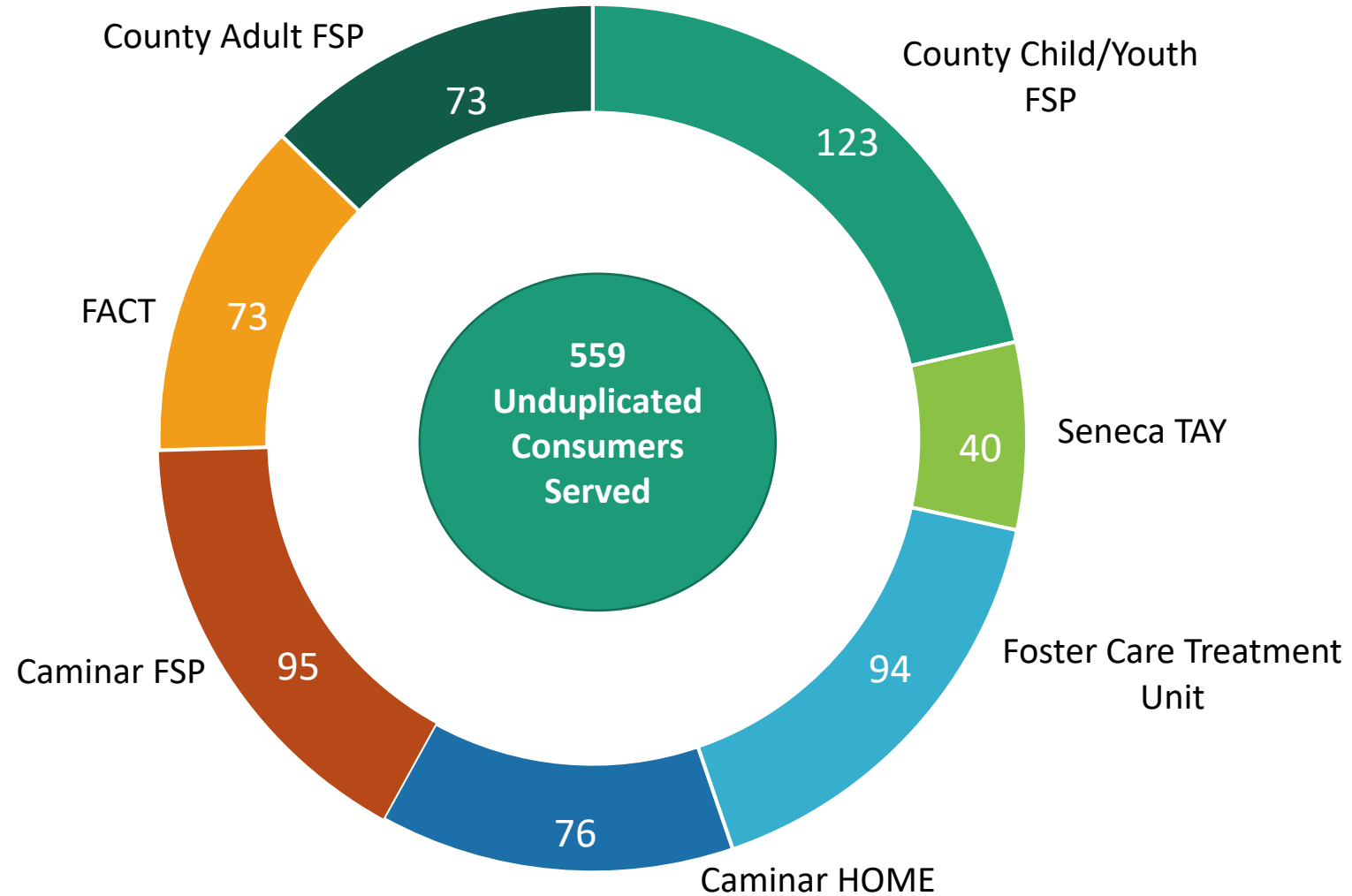
## Race



## City of Residence

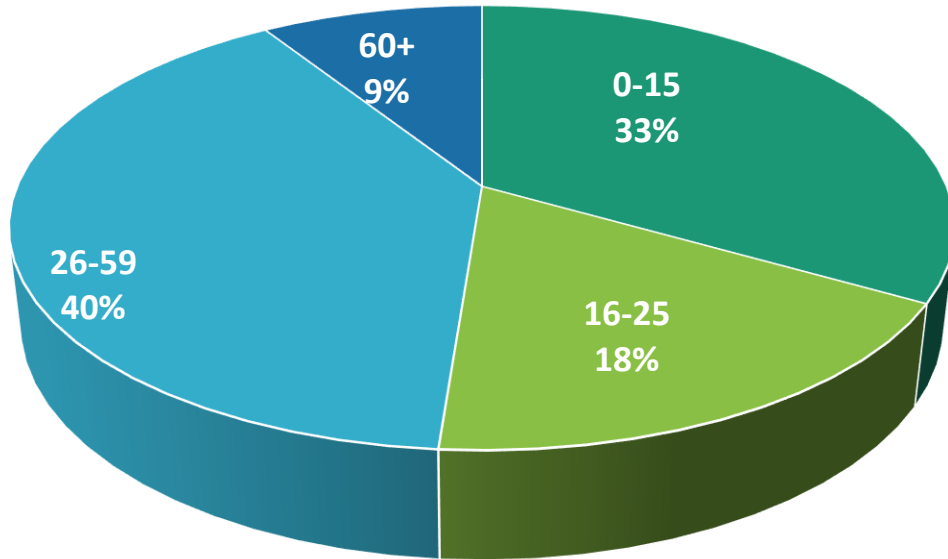


# Full Service Partnership (FSP) Programs at a Glance

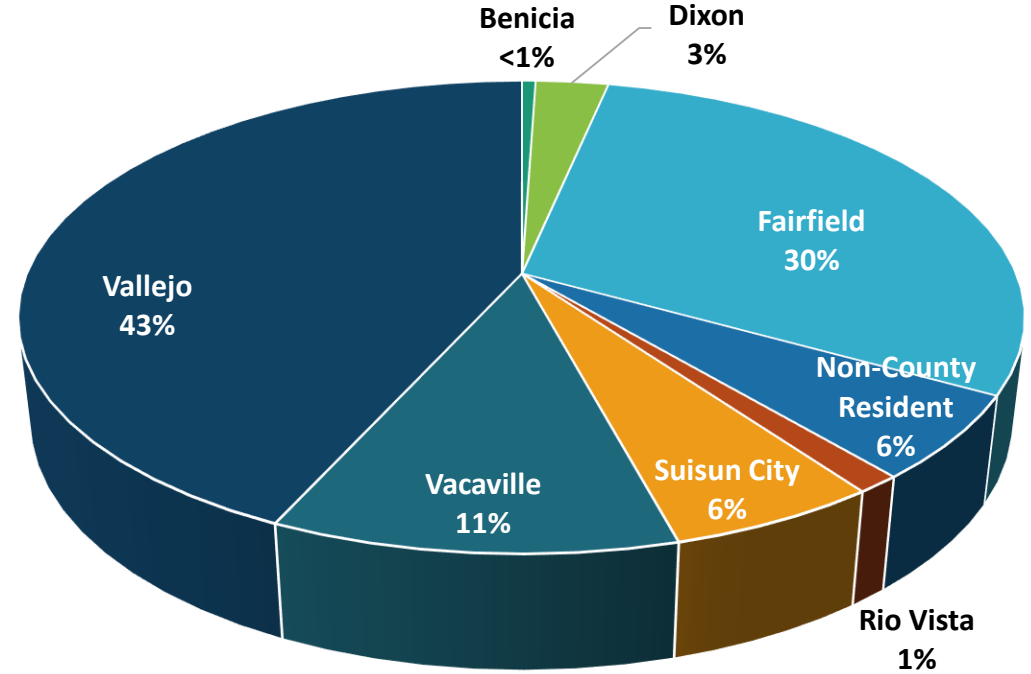


# Full Service Partnership (FSP) Programs by Age & City of Residence

Age



City of Residence



# Outcomes for FSP Programs

FSP System of Care	Annual Period (7/1/2019-6/30/2020)					
	# Unduplicated Consumers Served	# of Consumers Hospitalized 1 Time	# of Consumers Hospitalized 2 or More Times	# of Consumers Incarcerated	# of Consumers Experienced 1 Episode of Homelessness	# of Consumers Experienced Placement Loss (children/youth only)
Adults	306	3% (8)	4% (12)	2% (7)	1% (4)	NA
Child/ Youth	253	3% (7)	0.4% (1)	4% (10)	1% (3)	5% (13)

# CSS Programs At a Glance

Program/Service	# Unduplicated Consumers Served	Providers
Crisis Stabilization Unit (CSU)	934	Crestwood
Mentally Ill Offender Crime Reduction (MIOCR)	112	Solano County Sheriff's Office & subcontractor (Caminar)
Katie K. Services (KAS) Program	48	Seneca
Wellness & Recovery Unit	1,362	Solano County Behavioral Health
Adult Wellness & Recovery Centers	391 Attended at least once	Caminar & Circle of Friends
Employment Program	142	Caminar Jobs Plus
CARE Clinic	14	Child Haven



# CSS Outcomes & Impact on the Community

## **Crisis Stabilization Unit: Crestwood**

- There were **1,373** admissions representing **934** unduplicated consumers
- **501** admissions resulted in the consumer being discharged to the community and of those **90%** (451) were successfully linked

## **Katie A. Services (KAS) Program: Seneca**

- Of the **48** consumers served **95%** (46) remained in a stable placement or transition to a lower level of care and **79%** (38) had an increase in natural support people involved in their treatment

## **CARE Clinic: Child Haven**

- Of the **12** children who completed the program prior to the COVID-19 shut down **83%** (10) demonstrated improvement on the *Child Behavioral Checklist* and **100%** (12) of the children were successfully transitioned back to school or daycare prior to the COVID-19 shut down



# CSS Outcomes & Impact on the Community

## Adult Wellness & Recovery Centers: Caminar & Circle of Friends

- Served a total of **391** peer consumers and of the peers who completed the *Quality of Life Scale* **63%** demonstrated improvement in functioning and life satisfaction.

## County Wellness & Recovery Unit

- Facilitated peer support groups for **430** peers, and family support groups for **449** family members.

## Employment Services: Caminar

- The Jobs Plus program served **142** peer consumers using the *Individual Placement and Support (IPS)* model and of those **105** secured jobs that are considered “competitive employment” positions and of those **55** remained employed for 90 days or more for a job retention rate of **67%**

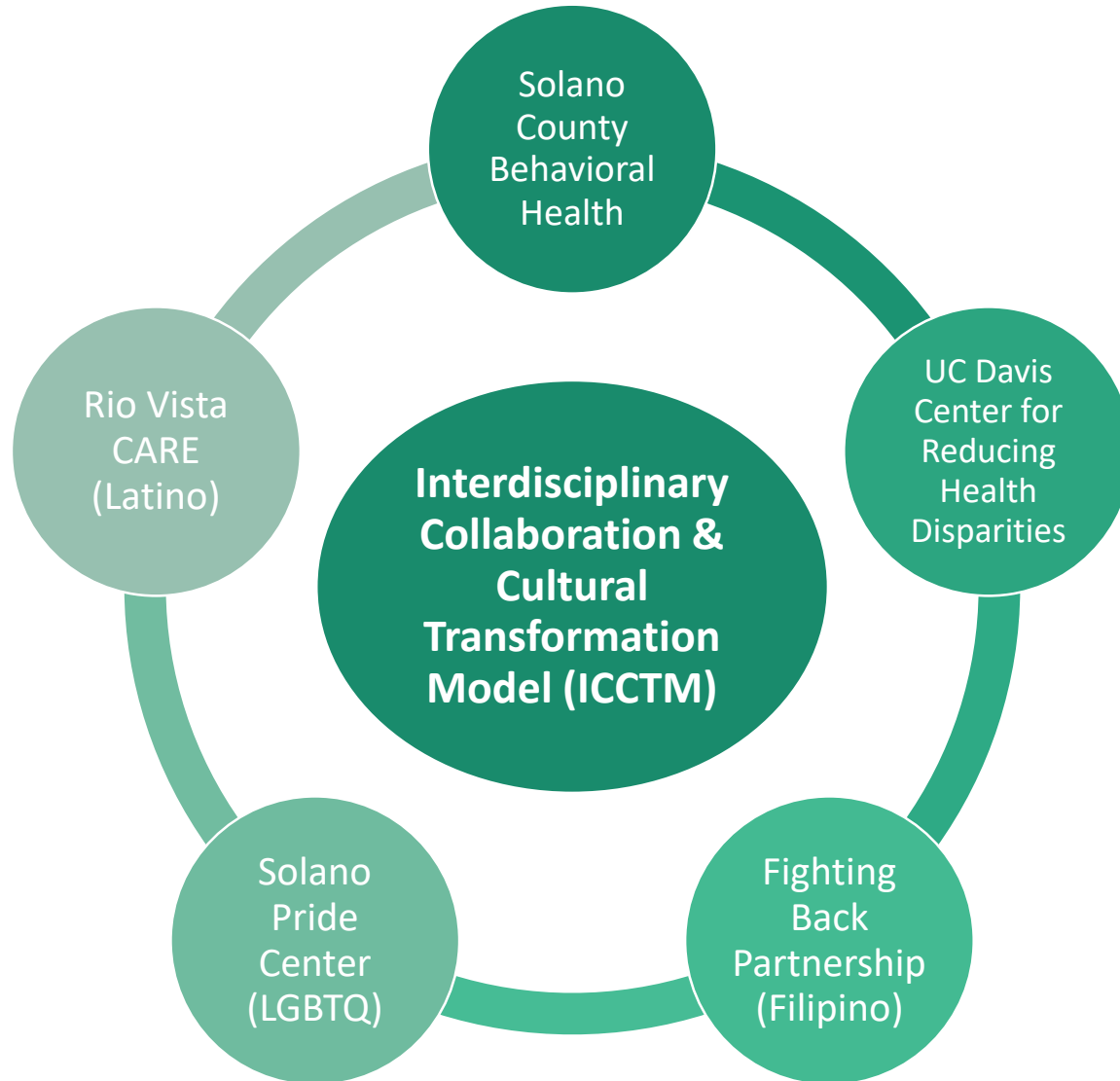


\$2.1M or 9% of the CSS funds are being used to prevent homelessness

# of Consumers Housed	Contractor & Program
40	BACS Transitional Housing
107	BACS Respite Housing
68	Caminar Permanent Housing
18	Caminar Transitional Housing
64	Shelter Solano

# MHSA Funded Housing

# Innovation Projects



3 target unserved/underserved communities identified as:  
Latino, Filipino and LGBTQ

Ten (10) QI Action Plans developed by multi-sector partners and are focused on:

- Workforce development
- Community engagement
- Training

**SOMOS UNO**

Familia.  
Amistad.  
Comunidad.

**Más Fuertes Juntos**  
LesbianGayBiTransQueer

**Ley de servicios de salud mental**  
Salud Mental del Condado de Solano

Para más información  
[Bit.ly/34zTuW2](https://bit.ly/34zTuW2)

**SANA ALAM MO...**

We are happy.  
Family is still our priority.  
We want you to ask about our lives and include us

**Bakla is Love**

**Mental Health Services Act**  
Solano County Behavioral Health

For more information:  
[Bit.ly/34zTuW2](https://bit.ly/34zTuW2)

**SOMOS UNO**

Familia.  
Amistad.  
Comunidad.

**Más Fuertes Juntos**  
LesbianGayBiTransQueer

**Ley de servicios de salud mental**  
Departamento de Salud Mental del Condado de Solano

Para más información  
[solanocounty.com/lgbtq](https://solanocounty.com/lgbtq)

# LGBTQ Ethnic Visibility: QI Action Plan

# Takin' CLAS to the Schools: QI Action Plan

## School-Based Wellness Centers

- Culturally inclusive spaces where ALL students are welcome
- Enlisted youth group to conduct focus groups at each site prior to launching
- Funded 35 wellness centers on school campuses K-12 and adult ed sites, 5 pilot sites open already
- Scaffolding in services already funded by County BH MHSA, Public Health, Child Welfare, etc.

## Wellness Centers Philosophy

- Calm and supportive environment for students needing a place to re-center and re-calibrate
- Trauma-Informed space and staff
- Access point to link students to behavioral health services including crisis support as needed
- Peer delivered services when appropriate



**\$960,478** in MHSA  
Innovation reversion  
funds used for start up

# TRUEcare Roadmap: QI Action Plan





## Cultural Game Changers: QI Action Plan

- **Part I focused on recruitment, hiring and retention practices**
  - Job Postings
  - Change job descriptions
  - Hiring questions focused on cultural responsiveness and competencies
- **Part 2 focused on developing career pipelines**
  - Middle & High schools
  - Community Colleges
  - State colleges

## Solano County Inclusion Statement

*Solano County Behavioral Health is committed to equity, diversity, and inclusion. Our services aim to empower all community members throughout their journey towards wellness and recovery.*

*It is also of equal importance for us to improve access to quality care for underserved and under-represented ethnic and minority populations who have been historically marginalized by health care systems.*

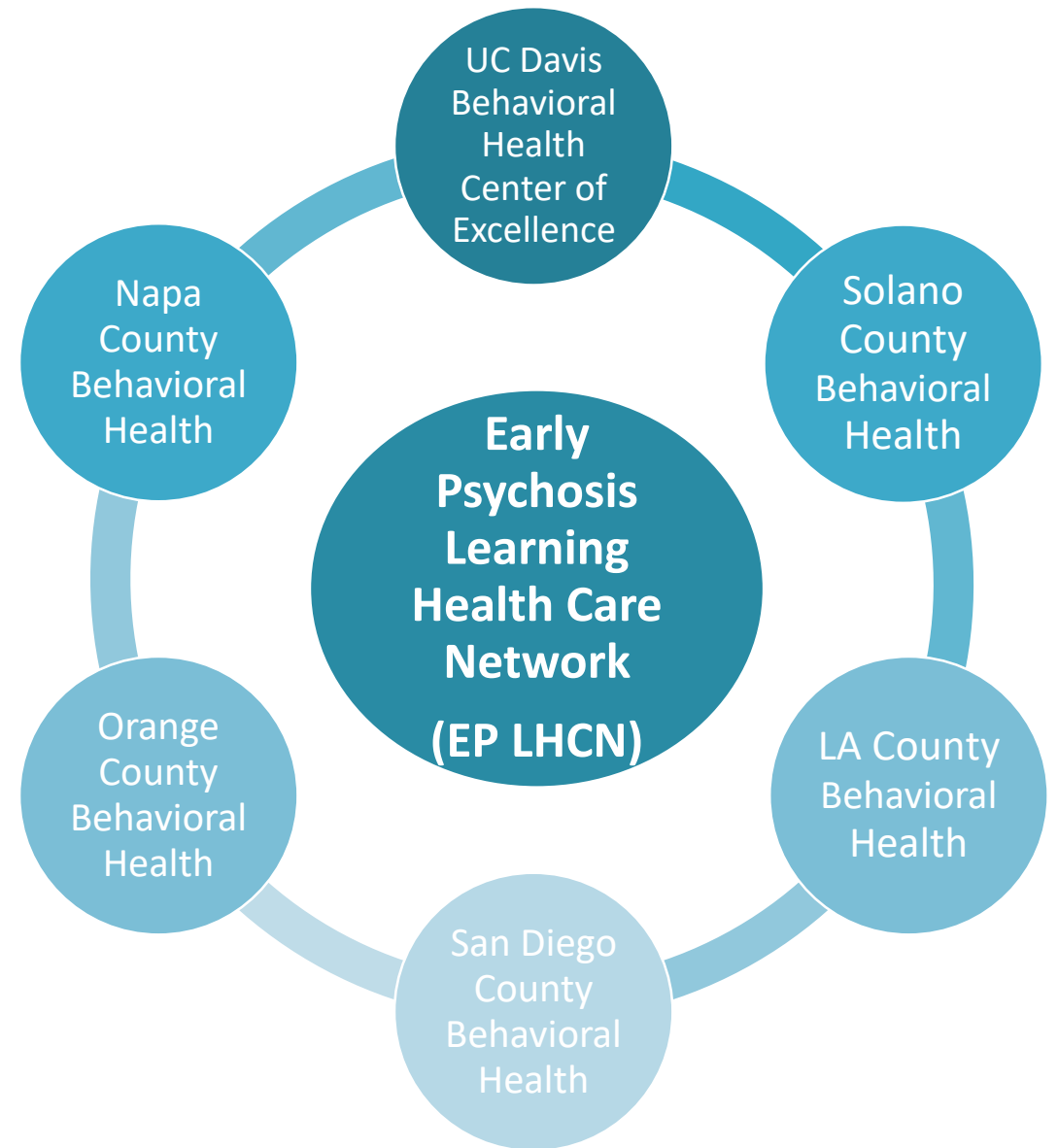
*We value the importance of employing staff who possess valuable life experiences and expertise to ensure our workforce is culturally and linguistically responsive and leverages diversity to foster innovation and positive outcomes for the people we serve.*



# Innovation Projects

## Progress of EP LHCN FY 2019/20

- Identification of outcomes to be tracked
- Recruited and started an Advisory Committee
- Held focus groups with consumers, family members, and providers to develop LCHN application and dashboard



# WET & CF/TN

## WET Initiatives & Trainings

In partnership with CIBHS the following trainings were provided:

- **Assertive Community Treatment (ACT) Booster Training:** evidenced-based model, **198** participants were trained
- **Play Therapy Training:** provided for **45** children's providers
- **Transitions to Independence (TIP) Model Training** evidenced-based model, **40** participants were trained
- **Harm Reduction "Integrating Harm Reduction into Client Services"** **52** participants were trained
- **Crisis Intervention Team (CIT) 8hr Intro Training:** **1** session was held prior to COVID-19 for law enforcement partners with **10** Peace Officers trained

## CF/TN Initiatives

County did not transfer any CSS funds to the CF/TN component for FY2019/20



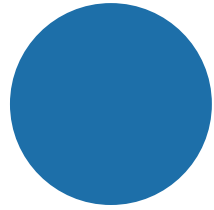
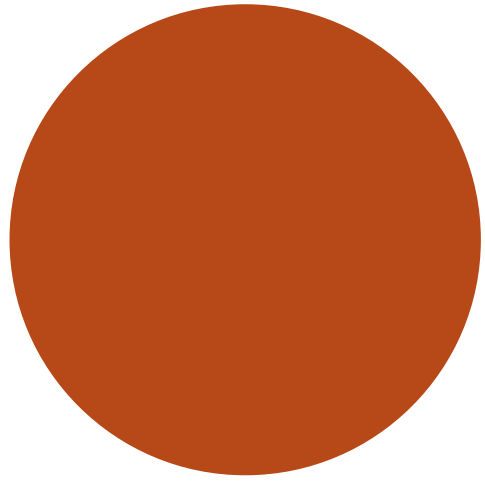
# Budget FY 2020/21

**Total MHSA budget is \$30,301,417**

Funding Component	Working Budget FY 20/21
CSS	\$23,941,003
PEI	\$4,989,461
INN	\$1,074,561
WET	\$296,392
CF/TN	\$0

TIME FOR  
A BREAK

10 Minute  
Break



# Breakout Groups

We want to hear from  
you!

# Small Group Agreements

- **Open-mindedness:** listen to and respect all points of view
- **Acceptance:** suspend judgment as best you can
- **Curiosity:** seek to understand rather than persuade
- **Discovery:** question old assumptions, look for new insights
- **Sincerity:** speak for yourself about what has personal heart and meaning
- **Brevity:** go for honesty and depth but don't go on and on

# Breakout Room Technical Guidance

## Joining a breakout room

1. The host will need to invite you to join the breakout room.
2. Click **Join**.
3. If you choose **Later**, you can join by clicking the **Breakout Rooms** option in your meeting controls.
4. Click **Join Breakout Room**.

You have been assigned to Breakout Room:

**Breakout Room 2**

### If you need assistance during the breakout room:

1. If you click **Ask for Help**, it will notify the meeting host that you need assistance and they will be asked to join your breakout room.
2. Click **Ask for Help** in the meeting controls.
3. Confirm that you would like assistance by clicking **Invite Host**.



Bringing it  
Together –  
Large  
Group  
Discussion



# Next Steps

## MHSA 3-Year Plan & Annual Update

- CPP Stakeholder Meetings
- Closing session 10/8/20 9AM-11AM
- MHSA 3-Year Plan & Annual Update Documents were posted for 30-day public comment **November 2, 2020**
- Public Hearing– Mental Health Advisory Board Meeting Public Hearing will be held **December 1, 2020**
- Solano County Board of Supervisors approval **January 2021**
- Submission to the California Mental Health Services Oversight and Accountability Commission (MHSOAC) and the Department of Health Care Services (DHCS) for approval



# Key Behavioral Health Contacts



[www.SolanoCounty.com/Depts/BH/MHSA](http://www.SolanoCounty.com/Depts/BH/MHSA)



Solano County-Mental Health Services Act Program



@SolanoCountyBH



(707)784-8320

- Tracy Lacey, Sr. Manager & MHSA Coordinator  
[TCLacey@SolanoCounty.com](mailto:TCLacey@SolanoCounty.com)
- Emery Cowan, Administrator Adults & QI  
[ECowan@SolanoCounty.com](mailto:ECowan@SolanoCounty.com)
- Leticia De La Cruz-Salas, Administrator Children's & Hiring  
[LDeLaCruz-Salas@SolanoCounty.com](mailto:LDeLaCruz-Salas@SolanoCounty.com)
- Sandra Sinz, Behavioral Health Director  
[SLSinz@SolanoCounty.com](mailto:SLSinz@SolanoCounty.com)